

Product datasheet for **RC219005**

GAB1 (NM_002039) Human Tagged ORF Clone

Product data:

Product Type:	Expression Plasmids
Product Name:	GAB1 (NM_002039) Human Tagged ORF Clone
Tag:	Myc-DDK
Symbol:	GAB1
Synonyms:	DFNB26
Mammalian Cell Selection:	Neomycin
Vector:	pCMV6-Entry (PS100001)
E. coli Selection:	Kanamycin (25 ug/mL)



[View online »](#)

ORF Nucleotide
Sequence:

>RC219005 representing NM_002039
Red=Cloning site Blue=ORF Green=Tags(s)

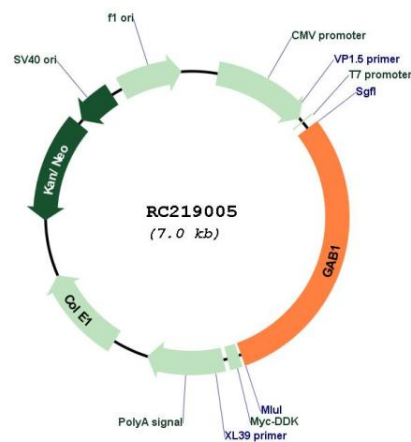
TTTTGTAATACGACTCACTATAGGGCGGCCGGAATTCGTGACTGGATCCGGTACCGAGGAGATCTGCC
GCCGCGATCGCC

ATGAGCGTGGTGAAGTGGTCTGCTCCGGATGGCTCCGCAAGTCCCCCGGAGAAAAAGTTGAAGCGTT
ATGCATGGAAGAGGAGATGGTTCGTGTTACGCAGTGGCCGTTAACTGGAGATCCAGATGTTTTGGAATA
TTACAAAAATGATCATGCCAAGAAGCCTATTCGTATTATTGATTTAAATTTATGTCAACAAGTAGATGCT
GGATTGACATTTAACAAAAAGAGTTTAAAAACAGCTACATTTTTGATATCAAACTATTGACCGGATTT
TCTACTGGTAGCAGACAGCGAGGAGAGATGAATAAGTGGGTTCTGTGATTTGTGACACTCTGTGGTT
TAATCCAACAGAAGAAGATCCTGTGAAGCCACCTGGCAGCTCTTACAAGCACCAGCTGATTTACCTTTA
GCTATAAATACAGCACCACCATCCACCCAGGCAGATTCATCCTCTGCTACTCTACCTCCTCCATACAGC
TAATCAATGTTCCACCACACCTGAAAACCTTGGCATTCCAGGAGATCCTCAAGACTACCTGTTGCTCAT
CAACTGTCAAAGCAAGAAGCCCGAACCCACCAGAACGCATGCTGATTCTGCAAAATCCACCTCTTCTGAA
ACAGACTGCAATGATAAGTCCCTTCTCATAAAAAATCCTGCTTCTCCAGCAAAATGGAATGAATG
GCTTTTTTCAGCAGCAAAATGATATACGACTCTCCACCTTACGTCGCCCATCTGCTTCAGTTGACTCCAG
CCTTTATAACCTGCCAGGAGTTATCCCATGATGTTTTACCAAAGGTGTCTCCATCAAGTACTGAAGCA
GATGGAGAAGTCTATGTTTTAATACCCCATCTGGGACATCGAGTGTAGAGACTCAAATGAGGCATGAT
CTATTAGTTATGACATTCCTCCAACACCTGGTAATACTTATCAGATTCACGAACATTTCCAGAAGGAAC
CTTGGGACAGACATCAAAGCTAGACACTATTCCAGATATTCCTCCACCTCGGCCACCGAAACCACATCCA
GCTCATGACCGATCTCCTGTGAAAACGTGTAGTATCCACGCACCGCCTCAGACACTGACAGTAGTTACT
GTATCCCTACAGCAGGGATGTCGCCTTACGTAATACCATTCCACTGTGGATTTAAACAAATTGCG
AAAAGATGCTAGTTCTCAAGACTGCTATGATATTCACGAGCATTTCCAAGTGATAGATCTAGTTCACTT
GAAGGCTTCCATAAACACTTTAAAGTCAAAAAATGTGTTGACAGTGGGAAGTGTTCAGTGAAGAAGTGG
ATGAAAATTACGTCCCAATGAATCCCAATTCACCACCAGACAACATTCCAGCAGTTTTACAGAACCAAT
TCAGGAAGCAAATATGTGCCAATGACTCCAGGAACATTTGATTTTTCTCATTGGAATGCAAGTTCTCT
CCTCCTGCTCATATGGGCTTCAAGTCCAGCCAAAAACCCCTCCAGAAGGCCAGTTCTGTTGACAGACT
GTGAACCACCCCGTGGATAGGAACCTCAAGCCAGACAGAAAAGTCAAGCCAGCGCCTTAGAAAATAAA
ACCTTTGCCAGAATGGGAAGAATTACAAGCCCCAGTTAGATCTCCATCACTAGGAGTTTTGCTCGAGAC
TCTTCCAGTTTTCCCATGTCCCCCGACCAGATTCAGTGCATAGCACAACCTCAAGCAGTACTCACAGC
ACAGTGAAGAGAATTATGTTCCCATGAACCCAAACCTGTCCAGTGAAGACCCAAATCTCTTTGGCAGTAA
CAGTCTTGATGGAGGAAGCAGCCATGATCAAGCCAAAGGAGACAAACAGGTGGAATACTTAGATCTC
GACTTAGATTCTGGGAAATCCACACCACCAGTAAAGCAAAAGAGCAGTGGCTCAGGCAGCAGTGTAGCAG
ATGAGAGAGTGGATTATGTTGTTGTTGACCAACAGAAGACCTTGGCTCTAAAGAGTACCCGGGAAGCCTG
GACAGATGGGAGACAGTCCACAGAATCAGAAACGCCAGCGAAGAGTGTGAAA

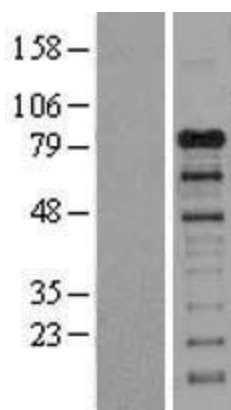
ACGCGTACGCGGCCGCTCGAGCAGAACTCATCTCAGAAGAGGATCTGGCAGCAATGATATCCTGGATT
ACAAGGATGACGACGATAAGGTTTAA

Components:	The ORF clone is ion-exchange column purified and shipped in a 2D barcoded Matrix tube containing 10ug of transfection-ready, dried plasmid DNA (reconstitute with 100 ul of water).
Reconstitution Method:	<ol style="list-style-type: none">1. Centrifuge at 5,000xg for 5min.2. Carefully open the tube and add 100ul of sterile water to dissolve the DNA.3. Close the tube and incubate for 10 minutes at room temperature.4. Briefly vortex the tube and then do a quick spin (less than 5000xg) to concentrate the liquid at the bottom.5. Store the suspended plasmid at -20°C. The DNA is stable for at least one year from date of shipping when stored at -20°C.
RefSeq:	NM_002039.4
RefSeq Size:	3323 bp
RefSeq ORF:	2085 bp
Locus ID:	2549
UniProt ID:	Q13480
Cytogenetics:	4q31.21
Domains:	PH
Protein Families:	Druggable Genome
Protein Pathways:	ErbB signaling pathway, Neurotrophin signaling pathway, Renal cell carcinoma
MW:	76.4 kDa
Gene Summary:	The protein encoded by this gene is a member of the IRS1-like multisubstrate docking protein family. It is an important mediator of branching tubulogenesis and plays a central role in cellular growth response, transformation and apoptosis. Two transcript variants encoding different isoforms have been found for this gene. [provided by RefSeq, Aug 2008]

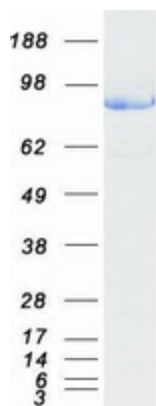
Product images:



Circular map for RC219005



Western blot validation of overexpression lysate (Cat# [LY400746]) using anti-DDK antibody (Cat# [TA50011-100]). Left: Cell lysates from untransfected HEK293T cells; Right: Cell lysates from HEK293T cells transfected with RC219005 using transfection reagent MegaTran 2.0 (Cat# [TT210002]).



Coomassie blue staining of purified GAB1 protein (Cat# [TP319005]). The protein was produced from HEK293T cells transfected with GAB1 cDNA clone (Cat# RC219005) using MegaTran 2.0 (Cat# [TT210002]).