

Product datasheet for **RC218995**

TPM1 (NM_001018020) Human Tagged ORF Clone

Product data:

Product Type:	Expression Plasmids
Product Name:	TPM1 (NM_001018020) Human Tagged ORF Clone
Tag:	Myc-DDK
Symbol:	TPM1
Synonyms:	C15orf13; CMD1Y; CMH3; HEL-S-265; HTM-alpha; LVNC9; TMSA
Mammalian Cell Selection:	Neomycin
Vector:	pCMV6-Entry (PS100001)
E. coli Selection:	Kanamycin (25 ug/mL)
ORF Nucleotide Sequence:	>RC218995 representing NM_001018020 Red=Cloning site Blue=ORF Green=Tags(s)

TTTTGTAATACGACTCACTATAGGGCGGCCGGAATTCGTCGACTGGATCCGGTACCGAGGAGATCTGCC
GCC**CGATCGCC**

ATGGACGCCATCAAGAAGAAGATGCAGATGCTGAAGCTCGACAAGGAGAACGCCTTGGATCGAGCTGAGC
AGGCGGAGGCCGACAAGAAGGCCGCGGAAGACAGGAGCAAGCAGCTCGAGGAGGACATCGCGCCAAGGA
GAAGTTGCTGCGGGTGTGCGGAGGACGAGCGGGACCGGGTCTGGAGGAGCTGCACAAGCGGAGGACAGC
CTCCTGGCCGCCAAGAGGCCGCCAAGGCTGAAGCCGACGTAGCTTCTCTGAACAGACGCATCCAGC
TGTTGAGGAAGAGTTGGATCGTGCCAGGAGCTCTGGCAACAGCTTTCAGAAAGCTGGAGGAAGCTGA
GAAGGCAGCAGATGAGAGTGAGAGAGGCATGAAAGTCATTGAGAGTCGAGCCAAAAAGATGAAGAAAA
ATGGAATTCAGGAGATCCAAGTAAAGAGGCCAAGCACATTGCTGAAGATGCCGACCGCAATATGAAG
AGGTGGCCGTAAGCTGGTCATCATTGAGAGCGACCTGGAACGTGCAGAGGAGCGGGCTGAGCTCTCAGA
AGGCCAAGTCCGACAGCTGGAAGAACAATTAAGAATAATGGATCAGACCTTGAAGCATTAAATGGCTGCA
GAGGATAAGTACTCGCAGAAGGAAGACAGATATGAGGAAGAGATCAAGGTCCTTCCGACAAGCTGAAGG
AGGCTGAGACTCGGGCTGAGTTTGGGAGAGGTCAGTAACTAAATGGAGAAAAGCATTGATGACTTAGA
AGAGAAAGTGGCTCATGCCAAAGAAGAAAACCTTAGTATGCATCAGATGCTGGATCAGACTTTACTGGAG
TTAAACAACATG

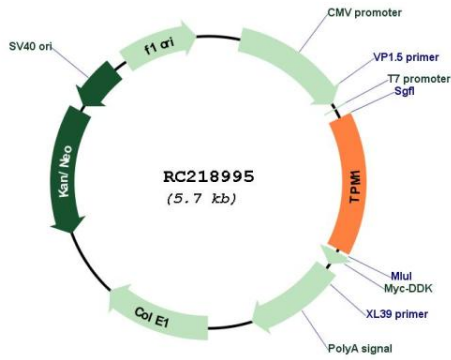
ACGCGTACGCGGCCGCTCGAGCAGAACTCATCTCAGAAGAGGATCTGGCAGCAAATGATATCCTGGATT
ACAAGGATGACGACGATAAGGTTTAA



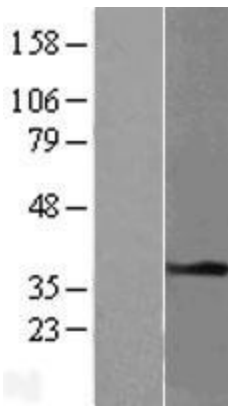
[View online »](#)

Reconstitution Method:	<ol style="list-style-type: none">1. Centrifuge at 5,000xg for 5min.2. Carefully open the tube and add 100ul of sterile water to dissolve the DNA.3. Close the tube and incubate for 10 minutes at room temperature.4. Briefly vortex the tube and then do a quick spin (less than 5000xg) to concentrate the liquid at the bottom.5. Store the suspended plasmid at -20°C. The DNA is stable for at least one year from date of shipping when stored at -20°C.
RefSeq:	NM_001018020.2
RefSeq Size:	1797 bp
RefSeq ORF:	855 bp
Locus ID:	7168
UniProt ID:	P09493
Cytogenetics:	15q22.2
Protein Families:	Druggable Genome
Protein Pathways:	Cardiac muscle contraction, Dilated cardiomyopathy, Hypertrophic cardiomyopathy (HCM)
MW:	32.6 kDa
Gene Summary:	<p>This gene is a member of the tropomyosin family of highly conserved, widely distributed actin-binding proteins involved in the contractile system of striated and smooth muscles and the cytoskeleton of non-muscle cells. Tropomyosin is composed of two alpha-helical chains arranged as a coiled-coil. It is polymerized end to end along the two grooves of actin filaments and provides stability to the filaments. The encoded protein is one type of alpha helical chain that forms the predominant tropomyosin of striated muscle, where it also functions in association with the troponin complex to regulate the calcium-dependent interaction of actin and myosin during muscle contraction. In smooth muscle and non-muscle cells, alternatively spliced transcript variants encoding a range of isoforms have been described. Mutations in this gene are associated with type 3 familial hypertrophic cardiomyopathy. [provided by RefSeq, Jul 2008]</p>

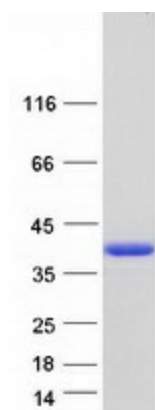
Product images:



Circular map for RC218995



Western blot validation of overexpression lysate (Cat# [LY422690]) using anti-DDK antibody (Cat# [TA50011-100]). Left: Cell lysates from untransfected HEK293T cells; Right: Cell lysates from HEK293T cells transfected with [RC219652] using transfection reagent MegaTran 2.0 (Cat# [TT210002]).



Coomassie blue staining of purified TPM1 protein (Cat# [TP318995]). The protein was produced from HEK293T cells transfected with TPM1 cDNA clone (Cat# RC218995) using MegaTran 2.0 (Cat# [TT210002]).