

Product datasheet for **RC218993**

SPINT1 (NM_181642) Human Tagged ORF Clone

Product data:

Product Type:	Expression Plasmids
Product Name:	SPINT1 (NM_181642) Human Tagged ORF Clone
Tag:	Myc-DDK
Symbol:	SPINT1
Synonyms:	HAI; HAI1; MANSC2
Mammalian Cell Selection:	Neomycin
Vector:	pCMV6-Entry (PS100001)
E. coli Selection:	Kanamycin (25 ug/mL)



[View online »](#)

ORF Nucleotide Sequence:

>RC218993 representing NM_181642
 Red=Cloning site Blue=ORF Green=Tags(s)

TTTTGTAATACGACTCACTATAGGGCGGCCGGGAATTCGTGACTGGATCCGGTACCGAGGAGATCTGCC
 GCC**CGGATCGCC**

ATGGCCCTGCGAGGACGATGGCCCGGCCCGCTCGCCCGGCCGGCATCCCTGCCGTGCGCTTGTGGC
 TTCTGTGCACGCTCGGCCCTCAGGGCACCCAGGCCGGGCCACCGCCCGGCCCTGGGCTGCCCGGG
 AGCCGACTGCCTGAACAGCTTTACCGCCGGGTGCCTGGCTTCGTGCTGGACACCAACGCCTCGGTGAG
 AACGGAGTACCTTCTGGAGTCCCCACCGTGCGCCGGGGTGGGACTGCGTGCAGCCTGCTGCACCA
 CCCAGAAGTGAACCTGGCGCTAGTGGAGTGCAGCCGACCGCGGGGAGGACGCCATCGCCGCTGCTT
 CCTCATCAACTGCCTCTACGAGCAGAATTCGTGTGCAAGTTCGCGCCAGGGAGGGCTTCATCAACTAC
 CTCACGAGGAAGTGTACCGCTCTACCGCAGCTGCGGACCCAGGGCTTTGGAGGTCTGGGATCCCCA
 AGGCTGGGACGAGTACTTGAAGTACAACCCAGGAACCCCTGGTGTGAAGGATGTGAAAAACAC
 AGATTGGCGCCTACTGCGGGGTGACACGGATGTCAGGGTAGAGAGAAAGACCCAAACAGGTGAACTG
 TGGGACTCAAGGAAGGCACCTACTGTTCCAGCTGACAGTACTAGCTCAGACCACCCAGAGGACACGG
 CCAACGTACAGTCACTGTGCTGTCCACCAAGCAGACAGAAGACTACTGCCTCGCATCCAACAAGGTGGG
 TCGCTGCCGGGGCTTTTCCACGCTGGTACTATGACCCACGGAGCAGATCTGCAAGAGTTTCGTTTAT
 GGAGGCTGCTTGGGAACAAGAACAACCTACCTCGGAAGAAGAGTGCATTCTAGCCTGTGCGGGTGTGC
 AAGGTGGGCTTTGAGAGGCAGCTCTGGGGCTCAGGCGACTTTCCCCAGGGCCCTCCATGAAAGGGC
 CCATCCAGTGTGCTCTGGCACCTGTGAGCCACCCAGTTCGCTGCAGCAATGGCTGTGCATCGACAGT
 TTCTGGAGTGTGACGACACCCCAACTGCCCGACGCTCCGACGAGGCTGCCTGTGAAAAATACACGA
 GTGGCTTTGACGAGTCCAGCGCATCCATTTCCCAAGTACAAAGGGCACTGCGTGGACCTGCCAGACAC
 AGGACTCGCAAGGAGAGCATCCCGCGTGGTACTACAACCCCTCAGCGAACACTGCGCCCGCTTTACC
 TATGGTGGTTGTTATGGCAACAAGAACAACCTTTGAGGAAGAGCAGCAGTGCCTCGAGTCTTGTGCGGCA
 TCTCCAAGAAGGATGTGTTGGCCTGAGGCGGGAATCCCCATTCCAGCACAGGCTCTGTGGAGATGGC
 TGTGCGAGTGTCTGCTCATCTGCATTGTTGGTGGTGGTGGTACTTGGGTTACTGCTTCTCAAGAAC
 CAGAGAAAGGACTTCCACGGACACCACCACCACCACCACCACCCTGCCAGCTCCACTGTCTCCACTA
 CCGAGGACACGGACACCTGGTCTATAACCACACCACGGCCCTC

ACGCGTACGCGGCCGCTCGAGCAGAAACTCATCTCAGAAGAGGATCTGGCAGCAAATGATATCTGGATT
 ACAAGGATGACGACGATAAGGTTTAA

Protein Sequence:

>RC218993 representing NM_181642
 Red=Cloning site Green=Tags(s)

MAPARTMARARLAPAGIPAVALWLLCTLGLQGTQAGPPPAPPGLPAGADCLNSFTAGVPGFVLDTNASVS
 NGATFLESPTVRRGWDCVRACCTTQNCNLALVELQPDREGDAIAACFLINCLYEQNFVCKFAPREGFINY
 LTREVYRSYRQLRTQGGGGIPKAWAGIDLKVPQPEPLVLKDVENDWRLLRGDTRVVERKDPNQVEL
 WGLKEGTYLFQLTVTSSDHPEDTANVTVTVLSTKQTEDYCLASNKVGRCRGSFPRWYDPTQICKSFVY
 GGCLGNKNNYLREEECILACRGVQGGPLRGSSGAQATFPQGPSMERRHPVCSGTCQPTQFRCSNGCCIDS
 FLECDTPNCPDASDEAAACEKYTSGFDELQRIHFPSDKGHCVLDLPTGLCKESIPRWYYPFSEHCARFT
 YGGCYGNKNNFEEEQCLESCRGISKKDVFGLRREIPIIPSTGSVEMAVAVFLVICIVVVVAAILGYCFFKN
 QRKDFHGHHPPTPASSTVSTTEDTEHLVYNHTTRPL

TRTRPLEQKLISEEDLAANDILDYKDDDDKV

Chromatograms:

https://cdn.origene.com/chromatograms/mg3828_g01.zip

Restriction Sites:

Sgfl-Mlul

Cloning Scheme:


ACCN: NM_181642

ORF Size: 1587 bp

OTI Disclaimer: The molecular sequence of this clone aligns with the gene accession number as a point of reference only. However, individual transcript sequences of the same gene can differ through naturally occurring variations (e.g. polymorphisms), each with its own valid existence. This clone is substantially in agreement with the reference, but a complete review of all prevailing variants is recommended prior to use. [More info](#)

OTI Annotation: This clone was engineered to express the complete ORF with an expression tag. Expression varies depending on the nature of the gene.

Components: The ORF clone is ion-exchange column purified and shipped in a 2D barcoded Matrix tube containing 10ug of transfection-ready, dried plasmid DNA (reconstitute with 100 ul of water).

- Reconstitution Method:**
1. Centrifuge at 5,000xg for 5min.
 2. Carefully open the tube and add 100ul of sterile water to dissolve the DNA.
 3. Close the tube and incubate for 10 minutes at room temperature.
 4. Briefly vortex the tube and then do a quick spin (less than 5000xg) to concentrate the liquid at the bottom.
 5. Store the suspended plasmid at -20°C. The DNA is stable for at least one year from date of shipping when stored at -20°C.

Note: Plasmids are not sterile. For experiments where strict sterility is required, filtration with 0.22um filter is required.

RefSeq: [NM_181642.3](#)

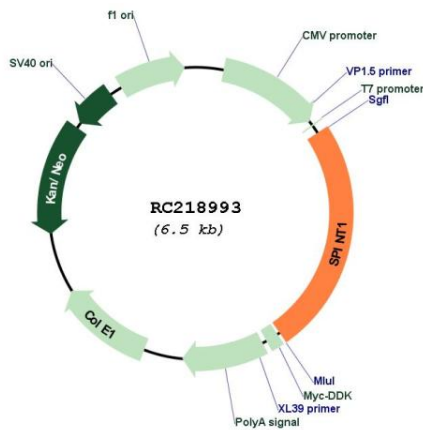
RefSeq Size: 2484 bp

RefSeq ORF: 1590 bp

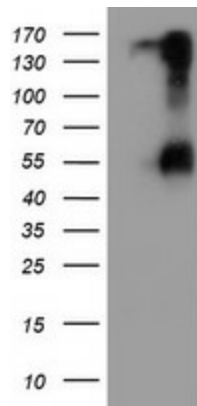
Locus ID: 6692

UniProt ID: [O43278](#)
Cytogenetics: 15q15.1
Protein Families: Druggable Genome, Secreted Protein, Transmembrane
MW: 54.8 kDa
Gene Summary: The protein encoded by this gene is a member of the Kunitz family of serine protease inhibitors. The protein is a potent inhibitor specific for HGF activator and is thought to be involved in the regulation of the proteolytic activation of HGF in injured tissues. Alternative splicing results in multiple variants encoding different isoforms. [provided by RefSeq, Jul 2008]

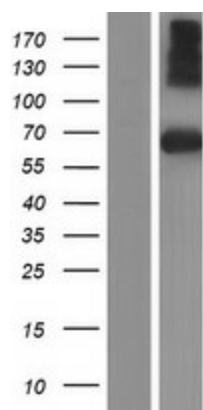
Product images:



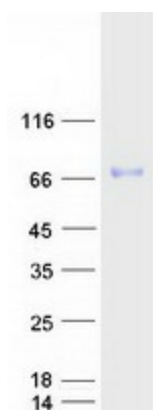
Circular map for RC218993



HEK293T cells were transfected with the pCMV6-ENTRY control (Cat# [PS100001], Left lane) or pCMV6-ENTRY SPINT1 (Cat# RC218993, Right lane) cDNA for 48 hrs and lysed. Equivalent amounts of cell lysates (5 ug per lane) were separated by SDS-PAGE and immunoblotted with anti-SPINT1 (Cat# [TA504591]). Positive lysates [LY405735] (100ug) and [LC405735] (20ug) can be purchased separately from OriGene.



Western blot validation of overexpression lysate (Cat# [LY405735]) using anti-DDK antibody (Cat# [TA50011-100]). Left: Cell lysates from untransfected HEK293T cells; Right: Cell lysates from HEK293T cells transfected with RC218993 using transfection reagent MegaTran 2.0 (Cat# [TT210002]).



Coomassie blue staining of purified SPINT1 protein (Cat# [TP318993]). The protein was produced from HEK293T cells transfected with SPINT1 cDNA clone (Cat# RC218993) using MegaTran 2.0 (Cat# [TT210002]).