

Product datasheet for RC218992

SRC3 (NCOA3) (NM_006534) Human Tagged ORF Clone

Product data:

Product Type:	Expression Plasmids
Product Name:	SRC3 (NCOA3) (NM_006534) Human Tagged ORF Clone
Tag:	Myc-DDK
Symbol:	SRC3
Synonyms:	ACTR; AIB-1; AIB1; bHLHe42; CAGH16; CTG26; KAT13B; pCIP; RAC3; SRC-3; SRC3; TNRC14; TNRC16; TRAM-1
Mammalian Cell Selection:	Neomycin
Vector:	pCMV6-Entry (PS100001)
E. coli Selection:	Kanamycin (25 ug/mL)
ORF Nucleotide Sequence:	>RC218992 representing NM_006534 Red=Cloning site Blue=ORF Green=Tags(s)

TTTTGTAATACGACTCACTATAGGGCGGCCGGAATTCGTCGACTGGATCCGGTACCGAGGAGATCTGCC
GCCGCGATCGCC

ATGAGTGGATTAGGAGAAAACCTGGATCCACTGGCCAGTGATTACGAAAACGCAAATTGCCATGTGATA
CTCCAGGACAAGGTCTTACCTGCAGTGGTAAAAACGGAGACGGGAGCAGGAAAAGTAAATATATTGAAGA
ATTGGCTGAGCTGATATCTGCCAATCTTAGTGATATTGACAATTTCAATGTCAAACCAGATAAATGTGCG
ATTTTAAAGGAAACAGTAAGACAGATACGTCAAATAAAAGAGCAAGGAAAAACTATTTCCAATGATGATG
ATGTTCAAAAAGCCGATGTATCTTACAGGGCAGGGAGTTATTGATAAAGACTCCTTAGGACCGCTTTT
ACTTCAGGCATTGGATGGTTTCTATTTGGTGAATCGAGACGGAAACATTGTATTGTATCAGAAAAT
GTCACACAATACCTGCAATATAAGCAAGAGGACCTGGTTAACACAAGTGTTCACAATATCTTACATGAAG
AAGACAGAAAGGATTTTCTTAAGAATTTACCAAAATCTACAGTTAATGGAGTTTCTCGGACAAATGAGAC
CCAAAGACAAAAAGCCATACATTTAATTGCCGTATGTTGATGAAAACACCACATGATATTTCTGGAAGAC
ATAAACGCCAGTCCTGAAATGCGCCAGAGATATGAAACAATGCAGTGCTTTGCCCTGTCTCAGCCACGAG
CTATGATGGAGGAAGGGGAAGATTTGCAATCTTGATGATCTGTGTGGCAGCCGATTACTACAGGAGA
AAGAACATTTCCATCAAACCTGAGAGCTTTATTACCAGACATGATCTTTCAGGAAAGGTTGTCAATATA
GATACAAATCACTGAGATCCTCCATGAGGCCTGGCTTGAAGATATAATCCGAAGGTGATTTCAGAGAT
TTTTTAGTCTAAATGATGGGCAGTCATGGTCCCAGAAACGTCACATCAAGAAGCTTATCTTAATGGCCA
TGCAGAAACCCAGTATATCGATTCTCGTTGGCTGATGGAACATAGTGACTGCACAGAAAAAGCAAA
CTCTCCGAAATCCTGTAACAAATGATCGACATGGCTTTGTCTCAACCCACTTCTTCAGAGAGAACAGA
ATGGATATAGACCAAACCAATCCTGTTGGACAAGGGATTAGACCACCTATGGCTGGATGCAACAGTTC
GGTAGGCGGCATGAGTATGTCGCCAAACCAAGGCTTACAGATGCCGAGCAGCAGGGCCTATGGCTTGGCA
GACCCTAGCACCAGGGCAGATGAGTGGAGCTAGGTATGGGGTTCCAGTAACATAGCTTCATTGACCC
CTGGGCCAGGCATGCAATCACCATCTTCTACCAGAACAACAATATGGGCTCAACATGAGTAGCCCCC



ACATGGGAGTCTGGTCTTGCCCCAAACCAGCAGAATATCATGATTTCTCCTCGTAATCGTGGGAGTCCA
AAGATAGCCTCACATCAGTTTTCTCCTGTTGCAGGTGTGCACTCTCCCATGGCATCTTCTGGCAACTG
GGAACCACAGCTTTTCCAGCAGCTCTCTCAGTGCCTGCAAGCCATCAGTGAAGGTGTGGGGACTTCCCT
TTTATCTACTCTGTATCACCAGGCCCAAATTGGATAACTCTCCAATATGAATATTACCAACCAAGT
AAAGTAAGCAATCAGGATTCCAAGATCCTCTGGGCTTTATTGCGACCAAAATCCAGTGGAGAGTTCAA
TGTGTCAAGTCAAATAGCAGAGATCACCTCAGTGACAAAGAAAGTAAGGAGAGCAGTGTGAGGGGCAGA
GAATCAAAGGGTCTTTGGAAAGCAAAGTCAAAAAATTACTGCAGTTACTTACCTGTTCTTTCTGAT
GACCGGGTCAATTCCTCCTTGACCAACTCCCCCTAGATTCAAGTTGTAAGAATCTTCTGTTAGTGCA
CCAGCCCCCTGGAGTCTCCTCCTACATCTGGAGGAGTATCCTCTACATCCAATATGCATGGGTCCT
GTTACAAGAGAAGCACCGGATTTTGACAAGTTGCTGCAGAATGGGAATTCACCAGCTGAGGTAGCCAAG
ATTACTGCAGAAGCCACTGGGAAAGACACCAGCAGTATAACTTCTTGTGGGGACGGAAATGTTGTCAAGC
AGGAGCAGCTAAGTCTAAGAAGAAGGAGAATAATGCACCTTCTTAGATACCTGCTGGACAGGGATGATCC
TAGTGATGCACCTCTAAAGAACTACAGCCCCAAGTGAAGGAGTGGATAATAAAATGAGTCAGTGCACC
AGCTCCACCATTCTAGCTCAAGTCAAGAGAAAGACCCTAAAATTAAGACAGAGACAAGTGAAGAGGGAT
CTGGAGACTTGGATAATCTAGATGCTATTCTTGGTGATCTGACTAGTTCTGACTTTTACAATAATCCAT
ATCCTCAAATGGTAGTCATCTGGGGACTAAGCAACAGGTGTTCAAGGAATAATCTCTGGGTTTGAAA
AGTTCACAGTCTGTGCAGTCTATTCTGCTCCATATAACCGAGCAGTGTCTCTGGATAGCCCTGTTTCTG
TTGGCTCAAGTCTCCAGTAAAAATATCAGTGTCTTCCCATGTTACCAAAGCAACCCATGTTGGGTGG
GAATCCAAGAAATGATGGATAGTCAGGAAAATATGGCTCAAGTATGGGTGGGCCAAACCGAAATGTGACT
GTGACTCAGACTCCTTCTCAGGAGACTGGGGCTTACCAAACCTCAAAGGCCGGCAGAATGGAACCTATGA
ATTCAACTCCATGGGAAGACCAGGAGGAGATTATAACTTCTTACCCAGACCTGCACTGGGTGGCTC
TATCCACATTGCCCTCTCGGTCTAATAGCATACCAGGTGCGAGACCAGTATTGCAACAGCAGCAGCAG
ATGTTCAAATGAGGCCGTGGTGAATCCCATGGGAATGGGGCTAATCCCTATGGCCAAGCAGCAGCAT
CTAACCAACTGGGTTCTGGCCCGATGGCATGTTGTCCATGGAACAAGTTTCTCATGGCACTCAAATAG
GCCTCTTCTTAGGAATCCCTGGATGATCTTGTGGGCCACCTTCCAACCTGGAAGGCCAGAGTGACGAA
AGAGCATTATTGGACCAGCTGCACACTTCTCAGCAACACAGATGCCACAGGCTGGAAGAAATGACA
GAGCTTTGGCATTCTGAACCTGTCAATCAGGGACAGGCATTAGAGCCAAACAGGATGCTTTCCAAGG
CCAAGAAGCAGCAGTAATGATGGATCAGAAGGCAGGATTATAGGACAGACATACCAGCACAGGGGCT
CCAATGCAAGGAGGCTTTCATCTCAGGGACAATCACCATCTTTAACTCTATGATGAATCAGATGAACC
AGCAAGGCAATTTCTCTCCAAGGAATGCACCCAGGCAACATCATGAGACCCGGACAACACCCC
CAAGCAACTTAGAATGCAGCTTACAGCAGAGGCTGCAGGGCCAGCAGTTTTGAATCAGAGCCGACAGGCA
CTTGAATGAAAATGGAAAACCCCTACTGCTGGTGGTGCTGCGGTGATGAGGCCTATGATGCAGCCCGCAGC
AGGGTTTTCTTAATGCTCAAATGGTCGCCAACCGCAGCAGAGAGCTGCTAAGTCATCACTTCCGACAACA
GAGGGTGGCTATGATGATGCAGCAGCAGCAGCAGCAACAGCAGCAGCAGCAGCAGCAGCAGCAGCA
CAGCAACAGCAACAGCAACAGCAGCAACAGCAGCAAAACCCAGGCCTTACAGCCACCTCCTAATGTGACTG
CTTCCCCAGCATGGATGGGCTTTTGGCAGGCCACAATGCCACAAGCTCCTCCGCAACAGTTTCCATA
TCAACCAAATTATGGAATGGGACAACAACCAGATCCAGCCTTGGTGGAGTGTCTAGTCTCCCAATGCA
ATGATGTCGTCAAGAATGGTCCCTCCCAGAATCCCATGATGCAACACCCGAGGCTGCATCCATCTATC
AGTCCTCAGAAAATGAAGGGCTGGCCATCAGGAAATTTGGCCAGGAACAGCTCCTTTCCAGCAGCAGTT
TGCCACAGGGGAATCCTGCAGTGTATAGTATGGTGCACATGAATGGCAGCAGTGGTCAATGGGACAG
ATGAACATGAACCCCATGCCATGTCTGGCATGCCTATGGGTCTGATCAGAAATACTGC

ACGCGTACGCGGCCGCTCGAGCAGAACTCATCTCAGAAGAGGATCTGGCAGCAATGATATCCTGGATT
ACAAGGATGACGACGATAAGGTTTAA

Protein Sequence: >RC218992 representing NM_006534
 Red=Cloning site Green=Tags(s)

```

MSGLGENLDPLASDRKRKLPKCDTPGQGLTCSGEKRRREQESKYIEELAEIISANLSDIDNFNVKPKDCA
ILKETVRQIRQIKEQGKTI SNDDDVQKADVSSSTGGVIDKDSLGPLLLQALDGLFVVRNDRGNIVFVSEN
VTQYLQYKQEDLVNTSVYNILHEEDRKDFLKNLPKSTVNGVSWTNETQRQKSHTFNCRMLMKTPHDIEDI
INASPEMRQRYETMQCFALSQPRAMMEEGEDLQSCMICVARRITGERTFPSNPESFITRHDLSGKVVNI
DTNSLRSSMRPGFEDIIRRCIQRFSLNDGQSWSQKRHYQEAYLNQHAETPVYRFLADGTIVTAQTKSK
LFRNPVTNDRHGFVSTHFLQREQNGYRPNPNPVGQGIRPPMAGCNSSVGGMSMSPNQGLQMPSSRAYGLA
DPSTTGQMSGARYGSSNIAASLTPGPGMQSPSSYQNNNYGLNMSSPPHGSPLAPNQNNIMISPRNRGSP
KIASHQFSPVAGVHSPMASSGNTGNHSFSSSSLALQAISEGVGTSLSTLSSPGPKLDNSPMMNITQPS
KVSNQDSKSPGFYCDQNPVSSMCQSNRDLSDKESKESVEGAENQRGPLESKGHKLLQLLTCSSD
DRGHSSLTNSPLDSSCKESSVSVTSPSGVSSSTSGVSSSTSNMHGSLLEQKHRIHLKLLQNGNSPAEVAK
ITAATGKDTSSITSCGDGNVVKQEQLSPKKKENNALLRYLLDRDDPSDALSKELQPQVEGVDNKMSSQCT
SSTIPSSSQEKPKIKTETSEEGSGDLNLDAILGDLTSSDFYNNISSNGSHLGTKQQVFGTNSLGLK
SSQSVQSRPPYNRAVSLDSPVSVGSSPPVKNISAFMPLPKQPMPLGGNPRMDSQENYSSMGGPNRNV
VTQTPSSGDWGLPNSKAGRMEPMNSNSMGRPGDYNTSLPRPALGGS IPTPLRNSNIPGARPVLQQQQQ
MLQMRPGEIPMGGANPYQAAAASNLGSWPDGMLSMEQVSHGTQNRPLLRNSLDDL VGPPSNLEGGQSD
RALLDQLHTLLSNTDATGLEEIDRALGIPELVNQQALEPKQDAFQGGQEAAMMDQKAGLYGQTYPAQGP
PMQGGFHLQGGQSPSFNSMMNQMNQGNFPLQGMHPRANIMRPRNTNPKQLRMQLQRLQGGQFLNQSRQA
LELKMENPTAGGAAMRPMMPQGGFLNAQMVARSRELLSHHFRQQRVAMMMQQQQQQQQQQQQQQQ
QQQQQQQQQQQTQAFSPPPNVTASPSMDGLLAGPTMPQAPPQFPYQPNYGMGQQPDPAFGRVSSPPNA
MMSSRMGSPQNPMMPQHPQAAASIQSSEMKGWPSGNLARNSFSQQQFAHQGNPAVYSVMHMGSSGHMGQ
MNMNPMPSMGMPMPDQKYC
  
```

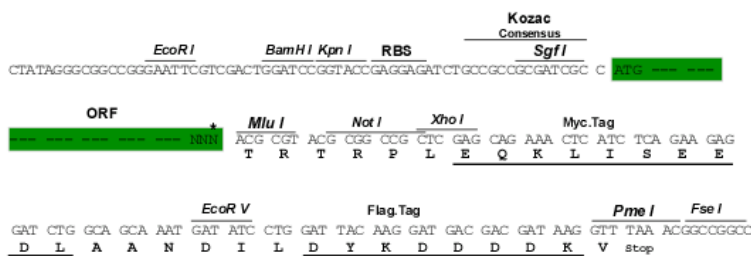
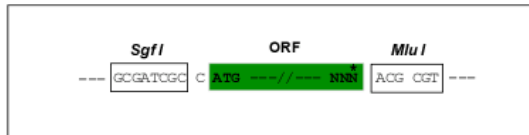
TRTRPLEQKLISEEDLAANDILDYKDDDDKV

Chromatograms: https://cdn.origene.com/chromatograms/mk6204_g06.zip

Restriction Sites: SgfI-MluI

Cloning Scheme:

Cloning sites used for ORF Shuttling:



* The last codon before the Stop codon of the ORF

ACCN: NM_006534

ORF Size: 4260 bp

OTI Disclaimer: Due to the inherent nature of this plasmid, standard methods to replicate additional amounts of DNA in E. coli are highly likely to result in mutations and/or rearrangements. Therefore, OriGene does not guarantee the capability to replicate this plasmid DNA. Additional amounts of DNA can be purchased from OriGene with batch-specific, full-sequence verification at a reduced cost. Please contact our customer care team at custsupport@origene.com or by calling 301.340.3188 option 3 for pricing and delivery.

The molecular sequence of this clone aligns with the gene accession number as a point of reference only. However, individual transcript sequences of the same gene can differ through naturally occurring variations (e.g. polymorphisms), each with its own valid existence. This clone is substantially in agreement with the reference, but a complete review of all prevailing variants is recommended prior to use. [More info](#)

OTI Annotation: This clone was engineered to express the complete ORF with an expression tag. Expression varies depending on the nature of the gene.

Components: The ORF clone is ion-exchange column purified and shipped in a 2D barcoded Matrix tube containing 10ug of transfection-ready, dried plasmid DNA (reconstitute with 100 ul of water).

Reconstitution Method:

1. Centrifuge at 5,000xg for 5min.
2. Carefully open the tube and add 100ul of sterile water to dissolve the DNA.
3. Close the tube and incubate for 10 minutes at room temperature.
4. Briefly vortex the tube and then do a quick spin (less than 5000xg) to concentrate the liquid at the bottom.
5. Store the suspended plasmid at -20°C. The DNA is stable for at least one year from date of shipping when stored at -20°C.

RefSeq: [NM_006534.4](#)

RefSeq Size: 7923 bp

RefSeq ORF: 4263 bp

Locus ID: 8202

UniProt ID: [Q9Y6Q9](#)

Cytogenetics: 20q13.12

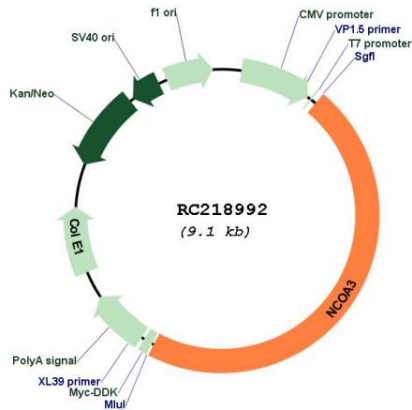
Domains: PAS, HLH

Protein Families: Druggable Genome, Transcription Factors

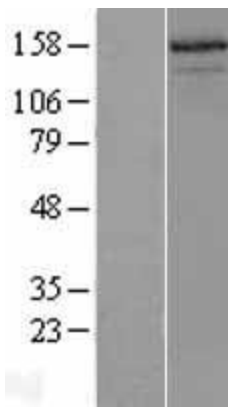
MW: 154.7 kDa

Gene Summary:

The protein encoded by this gene is a nuclear receptor coactivator that interacts with nuclear hormone receptors to enhance their transcriptional activator functions. The encoded protein has histone acetyltransferase activity and recruits p300/CBP-associated factor and CREB binding protein as part of a multisubunit coactivation complex. This protein is initially found in the cytoplasm but is translocated into the nucleus upon phosphorylation. Several transcript variants encoding different isoforms have been found for this gene. In addition, a polymorphic repeat region is found in the C-terminus of the encoded protein. [provided by RefSeq, Mar 2010]

Product images:


Circular map for RC218992



Western blot validation of overexpression lysate (Cat# [LY401958]) using anti-DDK antibody (Cat# [TA50011-100]). Left: Cell lysates from untransfected HEK293T cells; Right: Cell lysates from HEK293T cells transfected with RC218992 using transfection reagent MegaTran 2.0 (Cat# [TT210002]).