

Protein Sequence: >RC218985 representing NM_030660
Red=Cloning site Green=Tags(s)

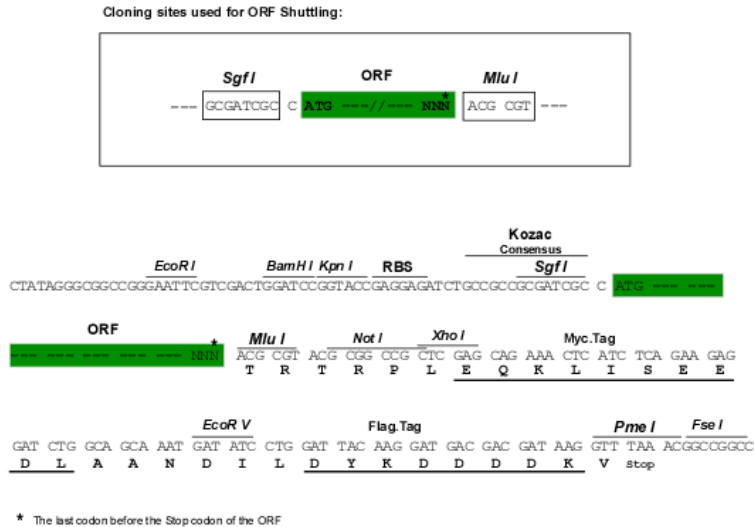
MESIFHEKQPSGNMDDSGFFSIQVISNALKVVWGLELILFNSPEYQRLRIDPINERSFICNYKEHWFVTRK
 LGKQWFNLNSLLTGPELISDTYLALFLAQLQQEGYSIFVVKGDLPCADQLLQMIRVQQMHRPKLIGEE
 LAQLKEQRVHKTDLERVLEANDGSGMLDEDEEDLQRALALSRQEIDMEDEEADLRRAIQLSMQSSRNIS
 QDMTQTSGTNLTSEELRKRREAYFEKQQKQQQQQQQQGDL SGQSSHPCERPATSSGALGSDLGDAMS
 EEDMLQAAVTMSLETVRNDLKTEGKK

TRTRPLEQKLISEEDLAANDILDYKDDDDKVV

Chromatograms: https://cdn.origene.com/chromatograms/mk8051_g11.zip

Restriction Sites: SgfI-MluI

Cloning Scheme:



* The last codon before the Stop codon of the ORF

ACCN: NM_030660

ORF Size: 918 bp

OTI Disclaimer: The molecular sequence of this clone aligns with the gene accession number as a point of reference only. However, individual transcript sequences of the same gene can differ through naturally occurring variations (e.g. polymorphisms), each with its own valid existence. This clone is substantially in agreement with the reference, but a complete review of all prevailing variants is recommended prior to use. [More info](#)

OTI Annotation: This clone was engineered to express the complete ORF with an expression tag. Expression varies depending on the nature of the gene.

Components: The ORF clone is ion-exchange column purified and shipped in a 2D barcoded Matrix tube containing 10ug of transfection-ready, dried plasmid DNA (reconstitute with 100 ul of water).

Reconstitution Method:

1. Centrifuge at 5,000xg for 5min.
2. Carefully open the tube and add 100ul of sterile water to dissolve the DNA.
3. Close the tube and incubate for 10 minutes at room temperature.
4. Briefly vortex the tube and then do a quick spin (less than 5000xg) to concentrate the liquid at the bottom.
5. Store the suspended plasmid at -20°C. The DNA is stable for at least one year from date of shipping when stored at -20°C.

RefSeq: [NM_030660.5](#)

RefSeq Size: 2533 bp

RefSeq ORF: 921 bp

Locus ID: 4287

UniProt ID: [P54252](#)

Cytogenetics: 14q32.12

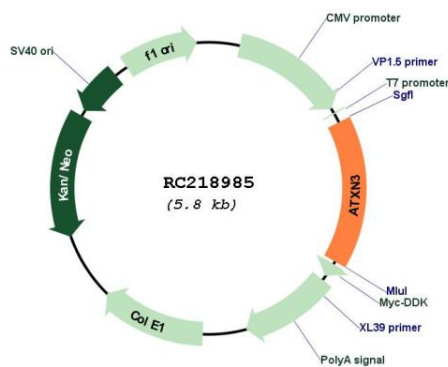
Domains: UIM, Josephin

Protein Families: Druggable Genome, Transcription Factors

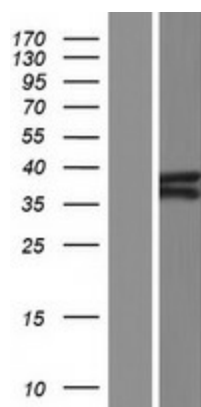
MW: 34.8 kDa

Gene Summary: Machado-Joseph disease, also known as spinocerebellar ataxia-3, is an autosomal dominant neurologic disorder. The protein encoded by this gene contains (CAG)*n* repeats in the coding region, and the expansion of these repeats from the normal 12-44 to 52-86 is one cause of Machado-Joseph disease. There is a negative correlation between the age of onset and CAG repeat numbers. Alternatively spliced transcript variants encoding different isoforms have been described for this gene. [provided by RefSeq, Jul 2016]

Product images:



Circular map for RC218985



Western blot validation of overexpression lysate (Cat# [LY410754]) using anti-DDK antibody (Cat# [TA50011-100]). Left: Cell lysates from untransfected HEK293T cells; Right: Cell lysates from HEK293T cells transfected with RC218985 using transfection reagent MegaTran 2.0 (Cat# [TT210002]).