

## Product datasheet for RC218984

### OTUD3 (NM\_015207) Human Tagged ORF Clone

#### Product data:

Product Type:	Expression Plasmids
Product Name:	OTUD3 (NM_015207) Human Tagged ORF Clone
Tag:	Myc-DDK
Symbol:	OTUD3
Synonyms:	DUBA4
Mammalian Cell Selection:	Neomycin
Vector:	pCMV6-Entry (PS100001)
E. coli Selection:	Kanamycin (25 ug/mL)
ORF Nucleotide Sequence:	>RC218984 representing NM_015207 Red=Cloning site Blue=ORF Green=Tags(s)

TTTTGTAATACGACTCACTATAGGGCGGCCGGAATTCGTCGACTGGATCCGGTACCGAGGAGATCTGCCGCC**CGGATCGCC**

ATGTCCCGAAAGCAGGCGGCGAAGAGCCGGCCGGCAGCGCCAGCCGAAAGCCGAGGCCGAGCGCAAGC  
GGGACGAGCGGGCGGCGCCGGGCCCTGGCCAAGGAGCGCGGAATCGGCCGGAGTCTGGCGGCGGCGG  
CGGCTGCGAGGAGGAGTTCGTCAGCTTCGCCAACCAGCTGCAGGCCCTGGGGCTGAAGCTGCGGGAGGTG  
CCGGGGGACGGCAATTGCTTGTTCAGAGCTCTTGGTGATCAATTGGAGGGACACTCACGAAATCATCTCA  
AGCACAGACAGGAGACAGTGGACTACATGATAAAGCAGCGGAAGATTTGAACCCTTTGTAGAAGATGA  
CATTCTTTTGAAGCATGTGGCCAGTTTGGCAAAGCCTGGTACTTTTGTGGCAATGATGCAATTGTA  
GCCTTTGCAAGAAATCATCAGTTGAATGTAGTGATTTCATCAACTTAATGCCCTTTGTGGCAGATTCGTG  
GTACAGAGAAAAGCAGCGTGAGGGAGTTACACATCGCATATCGGTATGGAGAGCACTACGACAGTGTTCG  
GAGGATCAATGACAACCTCAGAGGCACCTGCACATCTCCAGACGGATTTTCAGATGCTTCATCAAGATGAA  
TCAAATAAAGAGAAAAGATCAAGACAAAGGAATGGACTCTGAAGACGACCTGAGAGATGAAGTAGAGG  
ATGCTGTCCAGAAAGTTTGAATGCAACTGGATGTTTCAGATTTAATTTAATAGTCCAGAACCTGGAAGC  
TGAAAATTATAATATTGAATCTGCAATAATTGCCGTGCTTCGGATGAACCAAGGGAAGAGAAATAATGCA  
GAAGAAATCTTGAGCCAGTGGTTCGAGTGTGAAGCAGTGTGGCCCTTTGTGGAGGAGGTGGCAGTG  
GTGCCAGAAATCTTGAAATCAGGGCTTAAATGAAGGCAGGACCGAAAACAATAAGGCACAGGCCAGCCC  
TAGTGAAGAAAACAAAGCAAATAAAAACCAAGCTCGCAAAGGTCACAAAACAAACAGAGGCGAGAACAGCAG  
TGGATGGAGAAGAAGAAGCGGCAGGAGGAGAGGCCACCGCCACAAAGCCCTGGAGAGCAGAGGTAGCCACA  
GGGACAATAACAGAAGCGAAGCAGAGGCCAAGCACGCAGGTACCTTGGTGAAGACCTTCGCCGCTCTCAA  
CATC

**ACGCGT**ACGCGGCCGCTCGAGCAGAAACTCATCTCAGAAGAGGATCTGGCAGCAAATGATATCCTGGATT  
ACAAGGATGACGACGATAAGGTTTAA



[View online »](#)

**Protein Sequence:** >RC218984 representing NM\_015207  
Red=Cloning site Green=Tags(s)

MSRKQAAKSRPGSGSRKAEAEERKRDERRARRALAKERRNRPESGGGGGCEEEFVSFANQLQALGLKLREV  
 PGDGNCLFRALGDQLEGHSRNHLKHRQETVDYMIKQREDFEPFVEDDIPFEKHVASLAKPGTFAGNDAIV  
 AFARNHQLNVIHQLNAPLWQIRGTEKSSVRELHIAYRYGEHYDSVRRINDNSEAPAHLQTFQMLHQDE  
 SNKREIKTKGMDSEDDLRLDEVEDAVQKVCNATGCSDFNLI VQNLEAENYNIESAIIAVLRMNQGKRNNNA  
 EENLEPSGRVLKQCGPLWEEGGSGARIFGNQGLNEGRTENNKAQASPSEENKANKNQLAKVTNKQRREQQ  
 WMEKKKRQEERHRHKALESRGSHRDNNRSEAEANTQVTLVKTF AALNI

TRTRPLEQKLISEEDLAANDILDYKDDDDKV

**Chromatograms:** [https://cdn.origene.com/chromatograms/mk8022\\_g04.zip](https://cdn.origene.com/chromatograms/mk8022_g04.zip)

**Restriction Sites:** SgfI-MluI

**Cloning Scheme:**



\* The last codon before the Stop codon of the ORF

**ACCN:** NM\_015207

**ORF Size:** 1194 bp

**OTI Disclaimer:** The molecular sequence of this clone aligns with the gene accession number as a point of reference only. However, individual transcript sequences of the same gene can differ through naturally occurring variations (e.g. polymorphisms), each with its own valid existence. This clone is substantially in agreement with the reference, but a complete review of all prevailing variants is recommended prior to use. [More info](#)

**OTI Annotation:** This clone was engineered to express the complete ORF with an expression tag. Expression varies depending on the nature of the gene.

**Components:** The ORF clone is ion-exchange column purified and shipped in a 2D barcoded Matrix tube containing 10ug of transfection-ready, dried plasmid DNA (reconstitute with 100 ul of water).

**Reconstitution Method:**

1. Centrifuge at 5,000xg for 5min.
2. Carefully open the tube and add 100ul of sterile water to dissolve the DNA.
3. Close the tube and incubate for 10 minutes at room temperature.
4. Briefly vortex the tube and then do a quick spin (less than 5000xg) to concentrate the liquid at the bottom.
5. Store the suspended plasmid at -20°C. The DNA is stable for at least one year from date of shipping when stored at -20°C.

**Note:** Plasmids are not sterile. For experiments where strict sterility is required, filtration with 0.22um filter is required.

**RefSeq:** [NM\\_015207.2](#)

**RefSeq Size:** 6523 bp

**RefSeq ORF:** 1197 bp

**Locus ID:** 23252

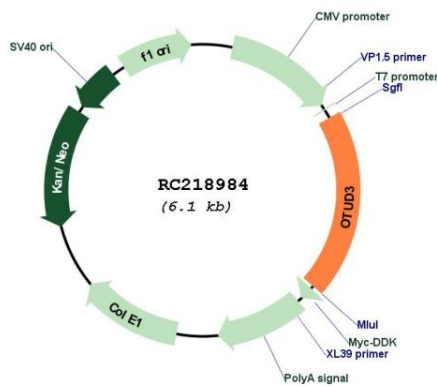
**UniProt ID:** [Q5T2D3](#)

**Cytogenetics:** 1p36.13

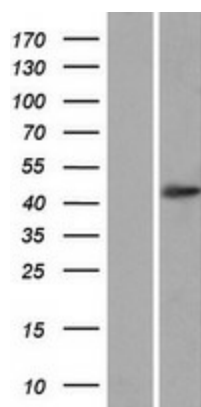
**MW:** 44.9 kDa

**Gene Summary:** Deubiquitinating enzyme that hydrolyzes 'Lys-6'- and 'Lys-11'-linked polyubiquitin. Also hydrolyzes heterotypic (mixed and branched) and homotypic chains.[UniProtKB/Swiss-Prot Function]

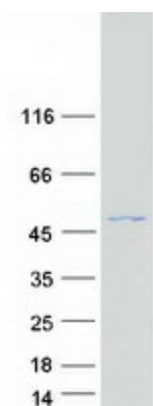
**Product images:**



Circular map for RC218984



Western blot validation of overexpression lysate (Cat# [LY414729]) using anti-DDK antibody (Cat# [TA50011-100]). Left: Cell lysates from untransfected HEK293T cells; Right: Cell lysates from HEK293T cells transfected with RC218984 using transfection reagent MegaTran 2.0 (Cat# [TT210002]).



Coomassie blue staining of purified OTUD3 protein (Cat# [TP318984]). The protein was produced from HEK293T cells transfected with OTUD3 cDNA clone (Cat# RC218984) using MegaTran 2.0 (Cat# [TT210002]).