

Product datasheet for **RC218979**

FBXO7 (NM_001033024) Human Tagged ORF Clone

Product data:

Product Type:	Expression Plasmids
Product Name:	FBXO7 (NM_001033024) Human Tagged ORF Clone
Tag:	Myc-DDK
Symbol:	FBXO7
Synonyms:	FBX; FBX07; FBX7; PARK15; PKPS
Mammalian Cell Selection:	Neomycin
Vector:	pCMV6-Entry (PS100001)
E. coli Selection:	Kanamycin (25 ug/mL)



[View online »](#)

ORF Nucleotide Sequence:

>RC218979 representing NM_001033024
 Red=Cloning site Blue=ORF Green=Tags(s)

TTTTGTAATACGACTCACTATAGGGCGGCCGGAATTCGTCGACTGGATCCGGTACCGAGGAGATCTGCC
 GCC**CGCATCGCC**

ATGGCCCGCCTCCCGGGGCTCTGGTCCCTCCTCGATTAGAGCATTCTTCACTCCAGAATAATGAGC
 AACCTCTTTGGCCACCAGCTCCAATCAGACTAGCATGCAGGATGAACAACCAAGTGATTATTCCAAGG
 ACAGGCAGCCAGTCTGGTGTGGGAATGACGACAGTATGTTAGGGCCTAGTCAAATTTTGAAGCTGAG
 TCAATTCAAGATAATGCGCATATGGCAGAGGGCACAGGTTTCTATCCCTCAGAACCATGCTCTGTAGTG
 AATCGGTGGAAGGGCAAGTGCCACATTCATTAGAGACCTGTATCAATCAGCTGACTGTTCTGATGCCAA
 TGATGCCTTGATAGTGTGATACATCTTCTCATGTTGGAGTCAGGTTACATACCTCAGGGCACCGAAGCC
 AAAGCACTGTCCATGCCGAGAAGTGAAGTTGAGCGGGTGTATAAGCTGCAGTACATGCATCCTCTCT
 GCGAGGGCAGCTCCGCTACTCTACCTGTGTGCCTTTGGGAACTGATTGTTGTAATGCTACACTAAA
 AATCAACAATGAGATTAGAAGTGTAAAAGATTGAGCTGCTACCAGAATCTTTTATTTGCAAAGAGAAA
 CTAGGGGAAAATGTAGCCAACATATACAAAGATCTTCAGAACTCTCTCGCTCTTTAAAGACCAGCTGG
 TGTATCCTCTTCTGGCTTTACCGACAAGCACTGAACCTACCAGATGTATTTGGTTGGTCTGCTCTCCC
 ATTGAACTGAACTACGGATCTTCCGACTTCTGGATGTTGTTCCGCTCTGTCTTTGTCTGCGGTTTGT
 CGTGACCTCTTACTGCTTCAAATGACCCACTCTGTGGAGGTTTTATATCTGCGTGATTTTCGAGACA
 ATACTGTCAGAGTTCAAGACACAGATTGGAAAGAACTGTACAGGAAGAGGCACATACAAAGAAAAGAAC
 CCCGAAAGGGCGGTTTGTGATGCTCCTGCCATCGTCAACTCACACCATCCATTCTATCCCAACCCCTTG
 CACCTAGGCCATTTCTAGCTCCCGCTTCTCCAGGAATTATCGGGGTGAATATGACCAAAGACCAA
 CACTTCCCTATGTTGGAGACCAATCAGTTCACCTCATTCTGCTGGGAGACGCCAGCCAGTTTCC
 TCCACTGAGACCACGCTTTGATCCAGTTGGCCACTTCCAGGACCTAACCCATCTTGCCAGGGCGAGGC
 GGCCCAATGACAGATTTCCCTTAGACCCAGCAGGGGTCGGCCAACTGATGGCCGGCTGTCATTATG

ACGCGTACGCGGCCGCTCGAGCAGAACTCATCTCAGAAGAGGATCTGGCAGCAATGATATCCTGGATT
 ACAAGGATGACGACGATAAGGTTTAA

Protein Sequence:

>RC218979 representing NM_001033024
 Red=Cloning site Green=Tags(s)

MARPPGGSGPLLDSEHSSLQNEQPSLATSSNQTSMQDEQPSDSFQGGAAQSGVWDDSMGLGPSQNFEE
 SIQDNAHMAEGTGFYPSEPMLCSESVEGQVPHSLETLYQSADCSANDALIVLIHLLMESGYIPQGTEA
 KALSMPEKWKLSGVYKLYMHPLCEGSSATLTCVPLGNLIVVNATLKINNEIRSVKRLQLLPESFICKEK
 LGENVANIYKDLQKLSRLFKDQLVYPLLAFTRQALNLPDVFGLVVLPLELKLRIFRLLDVRVLSLSAVC
 RDLFTASNDPLLWRFLYLRFDRDNTVRVQDQDWKELYRKRHIQRKESPKGRFVMLLPSSHTIPFYPNPL
 HPRPFSSRLPPGIIGGEYDQRPTLPYVGDPISSLIIPGPGETPSQFPPLRPRFDPVGPLPGPNPILPGRG
 GPNDRFPFRPSRGRPTDGRLSFM

TRTRPLEQKLISEEDLAANDILDYKDDDDKV

Chromatograms:

https://cdn.origene.com/chromatograms/mk8060_c09.zip

Restriction Sites:

Sgfl-Mlul

Cloning Scheme:


ACCN: NM_001033024

ORF Size: 1329 bp

OTI Disclaimer: The molecular sequence of this clone aligns with the gene accession number as a point of reference only. However, individual transcript sequences of the same gene can differ through naturally occurring variations (e.g. polymorphisms), each with its own valid existence. This clone is substantially in agreement with the reference, but a complete review of all prevailing variants is recommended prior to use. [More info](#)

OTI Annotation: This clone was engineered to express the complete ORF with an expression tag. Expression varies depending on the nature of the gene.

Components: The ORF clone is ion-exchange column purified and shipped in a 2D barcoded Matrix tube containing 10ug of transfection-ready, dried plasmid DNA (reconstitute with 100 ul of water).

Reconstitution Method:

1. Centrifuge at 5,000xg for 5min.
2. Carefully open the tube and add 100ul of sterile water to dissolve the DNA.
3. Close the tube and incubate for 10 minutes at room temperature.
4. Briefly vortex the tube and then do a quick spin (less than 5000xg) to concentrate the liquid at the bottom.
5. Store the suspended plasmid at -20°C. The DNA is stable for at least one year from date of shipping when stored at -20°C.

RefSeq: [NM_001033024.1](#), [NP_001028196.1](#)

RefSeq Size: 1758 bp

RefSeq ORF: 1332 bp

Locus ID: 25793

UniProt ID: [Q9Y3I1](#)

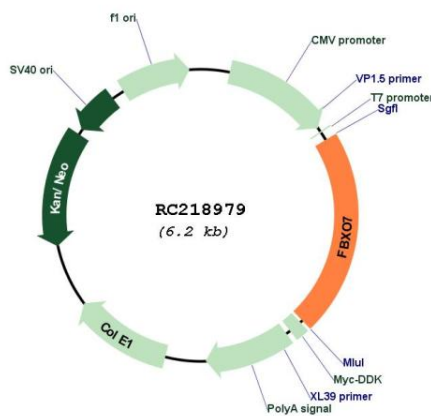
Cytogenetics: 22q12.3

Protein Families: Druggable Genome

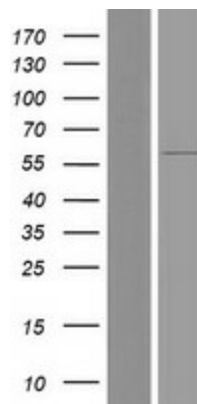
MW: 49.2 kDa

Gene Summary: This gene encodes a member of the F-box protein family which is characterized by an approximately 40 amino acid motif, the F-box. The F-box proteins constitute one of the four subunits of the ubiquitin protein ligase complex called SCFs (SKP1-cullin-F-box), which function in phosphorylation-dependent ubiquitination. The F-box proteins are divided into 3 classes: Fbws containing WD-40 domains, Fbls containing leucine-rich repeats, and Fbxs containing either different protein-protein interaction modules or no recognizable motifs. The protein encoded by this gene belongs to the Fbxs class and it may play a role in regulation of hematopoiesis. Alternatively spliced transcript variants of this gene have been identified with the full-length nature of only some variants being determined. [provided by RefSeq, Jul 2008]

Product images:



Circular map for RC218979



Western blot validation of overexpression lysate (Cat# [LY422341]) using anti-DDK antibody (Cat# [TA50011-100]). Left: Cell lysates from untransfected HEK293T cells; Right: Cell lysates from HEK293T cells transfected with RC218979 using transfection reagent MegaTran 2.0 (Cat# [TT210002]).