

## Product datasheet for **RC218961**

### GABARAP (NM\_007278) Human Tagged ORF Clone

#### Product data:

**Product Type:** Expression Plasmids  
**Product Name:** GABARAP (NM\_007278) Human Tagged ORF Clone  
**Tag:** Myc-DDK  
**Symbol:** GABARAP  
**Synonyms:** ATG8A; GABARAP-a; MM46  
**Mammalian Cell Selection:** Neomycin  
**Vector:** pCMV6-Entry (PS100001)  
**E. coli Selection:** Kanamycin (25 ug/mL)  
**ORF Nucleotide Sequence:** >RC218961 representing NM\_007278  
Red=Cloning site Blue=ORF Green=Tags(s)

TTTTGTAATACGACTCACTATAGGGCGCCGGGAATTCGTCGACTGGATCCGGTACCGAGGAGATCTGCC  
GCC**CGATCGCC**

ATGAAGTTCGTGTACAAAGAAGAGCATCCGTTTCGAGAAGCGCCGCTCTGAGGGCGAGAAGATCCGAAAGA  
AATACCCGGACCGGTGCCGGTGATAGTAGAAAAGGCTCCCAAAGCTCGGATAGGAGACCTGGACAAAA  
GAAATACCTGGTGCCTTCTGATCTCACAGTTGGTCAGTTCTACTTCTTGATCCGGAAGCGAATTCATCTC  
CGAGCTGAGGATGCCTTGTCTTTTCTTTGTCAACAATGTCATTCCACCCACAGTGCCACAATGGGTCAGC  
TGTACCAGGAACACCATGAAGAAGACTTCTTTCTACATTGCCTACAGTGACGAAAGTGCTACGGTCT  
G

**ACGCGT**ACGCGGCCGCTCGAGCAGAACTCATCTCAGAAGAGGATCTGGCAGCAAATGATATCCTGGATT  
ACAAGGATGACGACGATAAGGTTTAA

**Protein Sequence:** >RC218961 representing NM\_007278  
Red=Cloning site Green=Tags(s)  
MKFVYKEEHPFEKRRSEGEKIRKKYPDRVPVIVEKAPKARIGDLDKKKYLVPSDLTVGQFYFLIRKRIHL  
RAEDALFFVNNVIPPTSATMGQLYQEHHEEDFFLYIAYSDESIVYGL

**TR**TRPLEQKLISEEDLAANDILDYKDDDDKV

**Chromatograms:** [https://cdn.origene.com/chromatograms/mk6036\\_d05.zip](https://cdn.origene.com/chromatograms/mk6036_d05.zip)

**Restriction Sites:** SgfI-MluI



[View online »](#)

**Cloning Scheme:**


**ACCN:** NM\_007278

**ORF Size:** 351 bp

**OTI Disclaimer:** The molecular sequence of this clone aligns with the gene accession number as a point of reference only. However, individual transcript sequences of the same gene can differ through naturally occurring variations (e.g. polymorphisms), each with its own valid existence. This clone is substantially in agreement with the reference, but a complete review of all prevailing variants is recommended prior to use. [More info](#)

**OTI Annotation:** This clone was engineered to express the complete ORF with an expression tag. Expression varies depending on the nature of the gene.

**Components:** The ORF clone is ion-exchange column purified and shipped in a 2D barcoded Matrix tube containing 10ug of transfection-ready, dried plasmid DNA (reconstitute with 100 ul of water).

- Reconstitution Method:**
1. Centrifuge at 5,000xg for 5min.
  2. Carefully open the tube and add 100ul of sterile water to dissolve the DNA.
  3. Close the tube and incubate for 10 minutes at room temperature.
  4. Briefly vortex the tube and then do a quick spin (less than 5000xg) to concentrate the liquid at the bottom.
  5. Store the suspended plasmid at -20°C. The DNA is stable for at least one year from date of shipping when stored at -20°C.

**RefSeq:** [NM\\_007278.2](#)

**RefSeq Size:** 924 bp

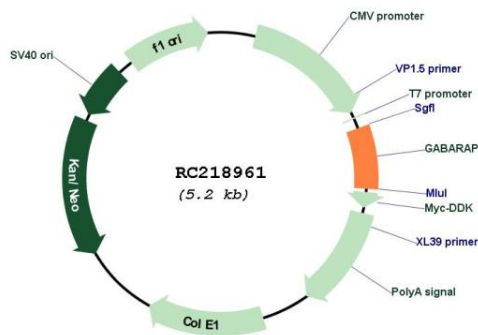
**RefSeq ORF:** 354 bp

**Locus ID:** 11337

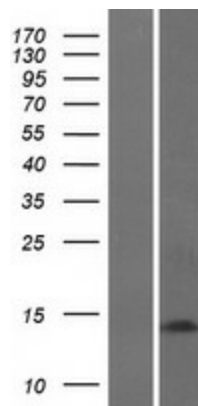
**UniProt ID:** [O95166](#)

<b>Cytogenetics:</b>	17p13.1
<b>Domains:</b>	MAP1_LC3
<b>Protein Families:</b>	Druggable Genome
<b>Protein Pathways:</b>	Regulation of autophagy
<b>MW:</b>	13.7 kDa
<b>Gene Summary:</b>	Gamma-aminobutyric acid A receptors [GABA(A) receptors] are ligand-gated chloride channels that mediate inhibitory neurotransmission. This gene encodes GABA(A) receptor-associated protein, which is highly positively charged in its N-terminus and shares sequence similarity with light chain-3 of microtubule-associated proteins 1A and 1B. This protein clusters neurotransmitter receptors by mediating interaction with the cytoskeleton. [provided by RefSeq, Jul 2008]

### Product images:



Circular map for RC218961



Western blot validation of overexpression lysate (Cat# [LY416054]) using anti-DDK antibody (Cat# [TA50011-100]). Left: Cell lysates from untransfected HEK293T cells; Right: Cell lysates from HEK293T cells transfected with RC218961 using transfection reagent MegaTran 2.0 (Cat# [TT210002]).