

Product datasheet for **RC218950**

TTC26 (NM_024926) Human Tagged ORF Clone

Product data:

Product Type:	Expression Plasmids
Product Name:	TTC26 (NM_024926) Human Tagged ORF Clone
Tag:	Myc-DDK
Symbol:	TTC26
Synonyms:	dyf-13; DYF13; IFT56
Mammalian Cell Selection:	Neomycin
Vector:	pCMV6-Entry (PS100001)
E. coli Selection:	Kanamycin (25 ug/mL)



[View online »](#)

ORF Nucleotide
Sequence:

>RC218950 ORF sequence
Red=Cloning site Blue=ORF Green=Tags(s)

TTTTGTAATACGACTCACTATAGGGCGGCCGGAATTCGTCGACTGGATCCGGTACCGAGGAGATCTGCC
GCCGCGATCGCC

ATGATGCTTTCAAGGGCCAAACCTGCTGTAGGCAGAGGCGTACAGCACACTGACAAAAGAAAGAAGAAAG
GTAGGAAGATTCCAAAAC TAGAGGAGCTACTTTCAAAAAGAGATTTCACTGGAGCTATTACCCTGTTGGA
GTTCAAACGTCATGTTGGGGAAGAAGAAGAGGATACTAATTTGTGGATTGGATATTGTGCCTTTACCTG
GGTACTACAAGAGAGCTCTGGAGGAATACGAAAATGCTACAAAAGAGGAAAATTGTAATTTCTGAAGTCT
GGGTGAACCTAGCTTGCACCTACTTCTTTCTGGGATGTATAACAAGCTGAAGCAGCTGGATTTAAAGC
TTCAAAAAGCCGACTCCAAAACCGCTCTCTTCCACTTGGCTCACAAAGTTAATGATGAGAAAAAATTG
ATGAGCTTTCATCAAAAATCTTCAGGATGTCACAGAAGTCAACTCAGTTTGGCTCAATCCACTATATGC
GATCTCACTACCAAGAAGCTATAGATATATAAGCGAATACTGCTAGATAACAGGGAATACCTTGCCT
TAATGTTTATGTGCCCTCTGCTACTACAAGTTGGATTACTATGATGTGTCTCAAGAAGTTTGGCTGTT
TACCTTCAGCAAATTCCTGATAGTACCATCGCACTCAATCTTAAAGCCTGTAACCATTTTCGCCTTTACA
ATGGCAGAGCAGCTGAGGCAGAACTCAAAGCTTGATGGACAATGCTTCTTCATCCTTTGAATTTGCTAA
AGAACTCATCAGGCACAATCTGGTTGTTTTCCGAGGAGGTGAAGGGGCTTTCAGGTTTTACCTCCCTTA
GTTGATGTCATTCTGAAGCTAGGCTAACTTGGTGATTTACTACCTTCGTCAGATGATGTACAAGAAG
CTTATAACTTAATTAAGGATCTGGAACCTACTCTCCTCAGGAGTATATTCTCAAAGGAGTGGTCAATGC
AGCCCTTGGCCAGGAAATGGGTTCAAGGGATCATATGAAAATTGCCCAGCAGTCTTCCAGTTGGTGGGA
GGATCAGCTAGTGAATGTGATACAATACCAGGGAGGCAGTGCATGGCTTCTGTTTCTTCTGCTTAAGC
AATTTGATGATGTTTTGATTTACCTCAACTCATTTAAGAGTTACTTCTATAATGATGACATCTTTAACTT
TAATTATGCCCAAGCAAAGCTGCAACAGGCAATACCAGTGAGGGCGAAGAGGCGTTCTCTTTGATCCAA
AGTGAGAAGATGAAAAATGATTACATTTACCTCAGCTGGTTAGCTCGGTGCTATATTATGAATAAGAAAC
CAAGACTAGCCTGGAACTTTATCTTAAGATGGAAACCTCCGGCAGTCTTTCAGTCTCTTACAGCTCAT
TGCTAATGACTGCTACAAGATGGCCAGTTTTACTATTCTGCCAAAGCTTTTGTGTCCTTGAGAGGCTG
GATCCTAACCTGAATATTGGGAAGGCAAACGGGGTGCCTGTGTGGGCATTTTCCAGATGATCATAGCTG
GGAGAGAACCCAAAGAGACCCTTCGAGAAGTGTCCATTTACTGAGAAGCACAGGTAACACCCAAGTAGA
ATACATGATCCGGATCATGAAGAAATGGCCAAAGAAAACAGAGTGTCCATC

ACGCGTACGCGGCCGCTCGAGCAGAAACTCATCTCAGAAGAGGATCTGGCAGCAAATGATATCCTGGATT
ACAAGGATGACGACGATAAGGTTTAA

Protein Sequence:

>RC218950 protein sequence
Red=Cloning site Green=Tags(s)

MMLSRAPAVGRGVQHTDKRKKKGRKIPKLEELL SKRDF TGAITLLEFKRHVGEEDTNLWIGYCAFHL
GDYKRALEEYENATKEENCNSEVWVNLACTYFFLGMKQAEAAAGFKASKSRLQNRLLFHLAHKFNDEKLL
MSFHQNLQDVTEDQLSLASIHMRSHYQEAIDYKRIILLDNREYLALNVYVALCYKLDYDVSQEVLA
YLQQIPDSTIALNLKACNHFRLYNGRAAEAEKSLMDNASSSFEFAKELIRHNLVVRGEGALQVLPPL
VDVIPEARLNLVIYYLRQDDVQEAAYNLIKDLEPTTPQEYILKGVVNAALGQEMGSRDHMKIAQQFFQLVG
GSASECDTIPGRQCMASCFLLKQFDDVLIYLSFKSYFYNDIFNFNYAQAATAATGNTSEGEAFLLIQ
SEKMKNDYIYLSWLARCYIMNKKPRLAWELYLKMETSSESFLLQLIANDCYKMGQFYYSAKAFDVLERL
DPNPEYWEGKRGACVGFQMI IAGREPKETLREVLHLLRSTGNTQVEYIMIRIMKKWAKENRYSI

TRTRPLEQKLI SEEDLAANDILDYKDDDDKV

Chromatograms:

https://cdn.origene.com/chromatograms/mk6468_d02.zip

Restriction Sites:

SgfI-MluI

Cloning Scheme:


ACCN: NM_024926

ORF Size: 1662 bp

OTI Disclaimer: The molecular sequence of this clone aligns with the gene accession number as a point of reference only. However, individual transcript sequences of the same gene can differ through naturally occurring variations (e.g. polymorphisms), each with its own valid existence. This clone is substantially in agreement with the reference, but a complete review of all prevailing variants is recommended prior to use. [More info](#)

OTI Annotation: This clone was engineered to express the complete ORF with an expression tag. Expression varies depending on the nature of the gene.

Components: The ORF clone is ion-exchange column purified and shipped in a 2D barcoded Matrix tube containing 10ug of transfection-ready, dried plasmid DNA (reconstitute with 100 ul of water).

- Reconstitution Method:**
1. Centrifuge at 5,000xg for 5min.
 2. Carefully open the tube and add 100ul of sterile water to dissolve the DNA.
 3. Close the tube and incubate for 10 minutes at room temperature.
 4. Briefly vortex the tube and then do a quick spin (less than 5000xg) to concentrate the liquid at the bottom.
 5. Store the suspended plasmid at -20°C. The DNA is stable for at least one year from date of shipping when stored at -20°C.

RefSeq: [NM_024926.4](#)

RefSeq Size: 4350 bp

RefSeq ORF: 1665 bp

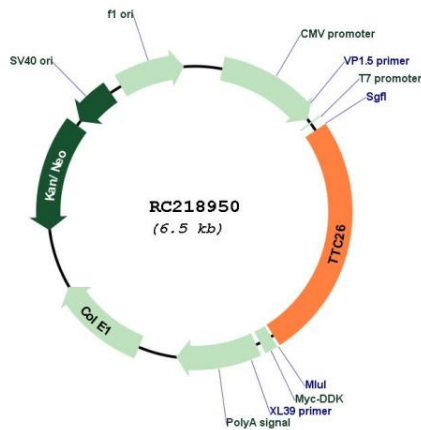
Locus ID: 79989

UniProt ID: [A0AVF1](#)

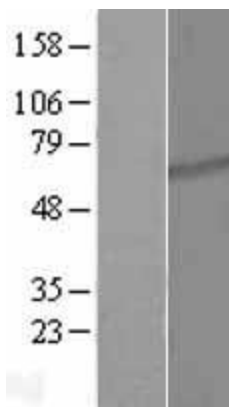
Cytogenetics: 7q34
Domains: TPR
MW: 64.2 kDa

Gene Summary: Component of the intraflagellar transport (IFT) complex B required for transport of proteins in the motile cilium. Required for transport of specific ciliary cargo proteins related to motility, while it is neither required for IFT complex B assembly or motion nor for cilium assembly. Required for efficient coupling between the accumulation of GLI2 and GLI3 at the ciliary tips and their dissociation from the negative regulator SUFU. Plays a key role in maintaining the integrity of the IFT complex B and the proper ciliary localization of the IFT complex B components. Not required for IFT complex A ciliary localization or function. Essential for maintaining proper microtubule organization within the ciliary axoneme.[UniProtKB/Swiss-Prot Function]

Product images:



Circular map for RC218950



Western blot validation of overexpression lysate (Cat# [LY410965]) using anti-DDK antibody (Cat# [TA50011-100]). Left: Cell lysates from untransfected HEK293T cells; Right: Cell lysates from HEK293T cells transfected with RC218950 using transfection reagent MegaTran 2.0 (Cat# [TT210002]).