

## Product datasheet for **RC218946**

### ARHGEF7 (NM\_003899) Human Tagged ORF Clone

#### Product data:

Product Type:	Expression Plasmids
Product Name:	ARHGEF7 (NM_003899) Human Tagged ORF Clone
Tag:	Myc-DDK
Symbol:	ARHGEF7
Synonyms:	BETA-PIX; COOL-1; COOL1; Nbla10314; P50; P50BP; P85; P85COOL1; P85SPR; PAK3; PIXB
Mammalian Cell Selection:	Neomycin
Vector:	pCMV6-Entry (PS100001)
E. coli Selection:	Kanamycin (25 ug/mL)



[View online »](#)

ORF Nucleotide  
Sequence:

>RC218946 representing NM\_003899  
Red=Cloning site Blue=ORF Green=Tags(s)

TTTTGTAATACGACTCACTATAGGGCGGCCGGGAATTCGTCGACTGGATCCGGTACCGAGGAGATCTGCC  
GCCGCGATCGCC

ATGACCGATAATAGCAACAATCAACTGGTAGTAAGAGCAAAGTTAACTCCAGCAGACCAATGAGGACG  
AGCTTTCCTTCTCAAAGGAGACGTCATCCATGTACCCGTGTGGAAGAGGGAGGCTGGTGGGAGGGCAC  
ACTCAACGGCCGACCGGCTGGTTCCTCCAGCAACTACGTGCGGAGGTCAGGCCAGCGAGAAGCCTGTG  
TCTCCAAATCAGGAACACTGAAGAGCCCTCCAAAGGATTTGATACGACTGCCATAAACAAGCTATT  
ACAATGTGGTGCTACAGAATATTTAGAAAACAGAAAATGAATATTCTAAAGAACTTCAGACTGTGCTTTC  
AACGTACCTACGGCCATTGCAGACCAGTGAGAAGTTAAGTTCAGCAAACATTTTCATATTTAATGGGAAAT  
CTAGAAGAAATATGTTCTTCCAGCAAATGCTCGTACAGTCTTTAGAAGAATGCACCAAGTTGCCGGAAG  
CTCAGCAGAGAGTCGGAGGCTGCTTTTTAAACCTGATGCCACAGATGAAAACCTGTACCTCACGTATTG  
TGCCAATCACCTTCTGCAGTGAATGCTCTCACGGAACACAGTGAGGAGTTGGGGGAGTTCATGGAGACC  
AAAGGTGCCAGCAGCCCTGGGATTCTCGTGTGACACGGGCCTGAGCAAACCTTCATGCGCCTGGATA  
AATACCCTACGCTGCTCAAGAGCTCGAGAGACACATGGAGGATTATCATACAGATAGACAAGATATTCA  
AAAATCCATGGCTGCCTTCAAAAACCTTTCAGCCCAATGTCAAGAAGTCCGGAAGAGGAAAGAGCTTGAG  
CTGAGATCCTGACGGAAGCCATCCGGAAGTGGGAGGGCGATGACATTAAGTCTGGGCAACGTCACCTT  
ACATGTCCAGGTCTGATTTCAGTGTGCCGGAAGTGAGGAAAAGAATGAAAGATATCTTCTACTCTTCCC  
AAATGTTTTGCTAATGTTGTCTGCCAGTCTAGGATGAGTGGCTTTATCTATCAGGGAAAGCTTCCAACG  
ACAGGAATGACAATCACAAGCTTGAGGACAGTGAAAATCATAGAAATGCATTTGAAATATCAGGGAGCA  
TGATTGAGCGGATATTAGTGTCTGCAACAACCAGCAGGATCTGCAGGAATGGGTGGAGCACCTACAGAA  
GCAAACGAAAGTACGCTGTGGGAAACCCACCATAAAGCCTCATTTCAGTGCCATCTCATACCCTCCCC  
TCCCACCCGGTCACTCCGTCCAGCAAGCACGACAGCAAGCCCGCGCCGCTGACGCCCCCTACCACA  
CGCTGCCCCACCCTCCACCACGGCACCCCGCACACCACATCAACTGGGGACCCTGGAGCCTCCGAA  
AACACCCAAGCCCTGGAGCCTGAGCTGCCTGCGGCCCGCGCTCCCTCCGGCCCTCAGTGTCTCTGC  
TACAAGGAGGATCTTAGTAAGAGCCCTAAGACCATGAAAAGCTGCTGCCAAGCGCAAACCTGAACGGA  
AGCCTTCAGATGAGGAGTTCGCGTCCCGGAAAAGCACAGCTGCTTTGGAAGAAGATGCTCAGATTCTGAA  
AGTCATTGAAGCTTACTGCACCAGCGCCAAAACAAGGCAAACACTCAATTCAGTTCACGCAAAGAATCT  
GCTCCACAAGTTTTGCTTCCAGAAGAAGAGAAAATTATAGTGGAAGAACTAAAAGTAATGGTCAGACAG  
TGATAGAAGAAAAGAGTCTTGTGGATACCGTATATGCATTAAGGATGAAGTTCAAGAATTAAGACAGGA  
CAACAAAAGATGAAGAAATCTCTAGAGGAAGAACAGAGAGCCCGCAAAGACCTGGAGAAGCTGGTGAGG  
AAAGTCTGAAGAACATGAATGATCCTGCCTGGGATGAGACCAATCTA

ACGCGTACGCGGCCGCTCGAGCAGAACTCATCTCAGAAGAGGATCTGGCAGCAAATGATATCCTGGATT  
ACAAGGATGACGACGATAAGGTTAA



**Reconstitution Method:**

1. Centrifuge at 5,000xg for 5min.
2. Carefully open the tube and add 100ul of sterile water to dissolve the DNA.
3. Close the tube and incubate for 10 minutes at room temperature.
4. Briefly vortex the tube and then do a quick spin (less than 5000xg) to concentrate the liquid at the bottom.
5. Store the suspended plasmid at -20°C. The DNA is stable for at least one year from date of shipping when stored at -20°C.

**RefSeq:** [NM\\_003899.5](#)

**RefSeq Size:** 5032 bp

**RefSeq ORF:** 1941 bp

**Locus ID:** 8874

**UniProt ID:** [Q14155](#)

**Cytogenetics:** 13q34

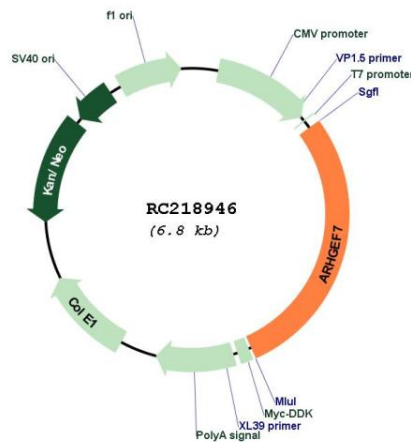
**Domains:** RhoGEF, SH3, PH

**Protein Pathways:** Regulation of actin cytoskeleton

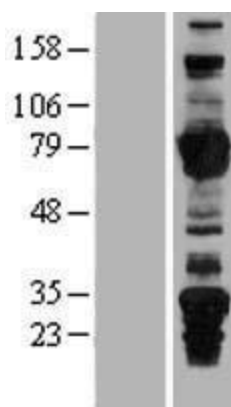
**MW:** 73 kDa

**Gene Summary:** This gene encodes a protein that belongs to a family of cytoplasmic proteins that activate the Ras-like family of Rho proteins by exchanging bound GDP for GTP. It forms a complex with the small GTP binding protein Rac1 and recruits Rac1 to membrane ruffles and to focal adhesions. Multiple alternatively spliced transcript variants encoding different isoforms have been observed for this gene. [provided by RefSeq, Mar 2016]

### Product images:



Circular map for RC218946



Western blot validation of overexpression lysate (Cat# [LY426426]) using anti-DDK antibody (Cat# [TA50011-100]). Left: Cell lysates from untransfected HEK293T cells; Right: Cell lysates from HEK293T cells transfected with [RC226057] using transfection reagent MegaTran 2.0 (Cat# [TT210002]).