

Product datasheet for RC218943

AUTS2 (NM_015570) Human Tagged ORF Clone

Product data:

Product Type:	Expression Plasmids
Product Name:	AUTS2 (NM_015570) Human Tagged ORF Clone
Tag:	Myc-DDK
Symbol:	AUTS2
Synonyms:	FBRSL2; MRD26
Mammalian Cell Selection:	Neomycin
Vector:	pCMV6-Entry (PS100001)
E. coli Selection:	Kanamycin (25 ug/mL)
ORF Nucleotide Sequence:	>RC218943 representing NM_015570 Red=Cloning site Blue=ORF Green=Tags(s)

TTTTGTAATACGACTCACTATAGGGCGGCCGGGAATTCGTCGACTGGATCCGGTACCGAGGAGATCTGCC
GCCCGATCGCC

ATGGATGGCCCGACGCGGGGCCATGGACTCCGCAAAAAGCGGGGTGCGGTGCGAGCGAGACCGGGAGA
GGCGCTCCCGGGCGGGCTGGGGCCGGCGGGCCGGCGGGGGCTGGCCGACCCGGGCGCTCTC
ACTCGCTCGTCGTCGGGCTCCGACAAGGAAGACAATGGGAAGCCCCGTCCTCCGCCCGTCCCGGCC
AGACCCCGCGGAGGAAGCGGAGAGAGTCCACCTCGGCAGAAGAGGACATCATTGATGGATTTGCCATGA
CCAGCTTTGTCACTTTTGAAGCGCTGGAGAAAGATGTAGCACTTAAGCCTCAGGAACGTGTGGAGAAACG
CCAGACGCCCCTGACCAAGAAGAAACGAGAAGCACTTACCAATGGCTTGTCTTTTCAATCAAGAAGAGC
AGACTCAGCCACCCACCACTACAGCTCAGATCGAGAAAATGACCGCAATCTCTGCCAGCACCTTGGGA
AGAGAAAGAAAATGCCGAAGGCACTCAGACAGCTCAAGCCAGGACAGAACAGCTGCAGGGACAGTGACAG
TGAAAGTGCCAGTGGAGAATCCAAGGGCTTCCACCGGAGCAGCTCTCGGGAAAGGCTCAGTGATAGTTCA
GCTCCTCCAGCTTGGGAACAGGCTACTTCTGTGACAGTGACAGTGACCAGGAAGAGAAGGCATCAGATG
CCAGCTTGAAAACTCTTCAACTGTTATTGTAACAAGATCCGGGTTAGGTGTTGGCAGCCTACC
AGAATAGACAGCCAGGATGCAGGGCCGATTGTCCCAAGATATCGGGTCTAGAGAGAAGCCAGGAGAAG
AGCCAGGACTGTTGCAAAGAGCCAATCTTTGAGCCTGTGGTCTTAAAGACCCCTGCCCTCAGGTGCGAC
AGCCAATACCCAGCCGACAGCGAGCCCAACTCCGAGCTCCTTCTCCGACCCTGACTTGGTGCAGCG
CACAGAGGCCCACTCAACCCCACTCTGAGTACACAGCCACCAAGGGCCCTCTGAGGCCAGCTC
CAGCCTGCCCCGAGCCTCAGGTGCAGAGGCCACCCAGGCCACAGTCCCCACCCAGCTGCTCCATCAGA
ACCTCCCACCTGTGCAGGCCACCCCTCTGCTCAGAGCCTCTCCAGCCATTGTCAGCCTACAACAGCAG
TAGCTTAAGCCTCAACAGTTTAAGCAGCAGCAGAAGCAGCACTCCAGCGAAGACTCAGCCCGCCCCACT
CACATCTCCACCACCCCTCTGCTCCCGTTCCTCTCCCTGCCCAACCACAGCCCTGCACAGCT
TCACACCACCTCCAGCCCCCGCACACTCACATCACCCAATATGTTTGCCCTCCACTGCTCTGCC
TCCTCCACCACCTGACATCAGGAAGTCTGCAGGTGGCCGACACCCGGCCGGGAGCACTTACTCAGAG



[View online »](#)

CAAGACATCTTGCACAGGAACTGAACACTCGTTTTTTGGCCTCTCAGAGTGCTGACCGCGGGGCTTCCC
 TGGGCCCTCCGCCCTACCTGCGGACCGAGTTCCATCAGCACCAGCACCAGCACCAGCACCCACCAGCA
 CACGCACCAGCACACCTTACGCGGTTCCCCACGCCATCCCACCACCGCCATCATGCCGACGCCAGCA
 CCTCCCATGTTTTGACAAATACCTTACAAAAGTTGACCCATTCTACCGGCACAGTCTTCCATTCTATC
 CTCCTGCAGTGTGGGCATCCCCCTATGATCCCACCCACTGGCCCTTTTGGTTCACTACAAGGAGCATT
 TCAGCCGAAGACATCCAACCTATCGATGTCGCTGCTCGGCCTGGGACAGTCCCACACACTTTACTCCAA
 AAGGACCCGAGGTTGACAGATCCTTTTACAGACTATGTTAAGGAAACCAGGGAAGTGGTGTGCTATGCATG
 TTCACATCGCCTGGCAGATTTACCACCACCAACAGAAAGTCAAGAAACAGATGCAGTCAGACCCACATAA
 GCTGGACTTTGGACTGAAACCTGAGTTCCTGAGCCGCCCTCCAGGCCCCAGTCTTTTTGGAGCCATCCAC
 CACCCCATGACCTGGCACGGCCTTCAACTTTGTTCTCTGCGCTGGTGTGCACACCCAACTGGGACCC
 CTTTTGGCCACCTCCTCATCACAGCAACTTCTCAACCTGCTGCCACCTAGACCTTTTAAATCGGCC
 GTCTACATTACAGGCCTAGCAGCAGTTGGTGGCAATGCCTTCGGGGGACTTGGAAATCCTTCCGTTACA
 CCCAACTCAATGTTGGCCACAAGGATGGCCCCAGTGTGCAGAACTTTAGCAACCCTCACGAACCCTGGA
 ACCGGCTGCACCAACGCCTCCGTGTTCCGACCCCTCCGCCCTGGCTGAAGCCAGGGGAGCTGGAGCG
 CAGCGCTCCGCTGCAGCTCATGACAGAGATAGAGATGTAGATAAACGAGACTCATCTGTTAGTAAAGAT
 GACAAAGAAAGGAAAGCGTTCGAGAAGAGACACTCCAGCCACCCTTACCAGCACCTGTCTCCCGTGA
 ATGCCCTGGGACATACCCGCAGCTCCACTGAACAGATCCGGGCTCATCTGAACACTGAGGCTCGGGAGAA
 GGACAAACCCAAAGAGAGGGAGAGAGACCCTCGGAATCCCGCAAGGACCTGGCCGCCGACGAGCACAAG
 GCGAAAGAGGGCCACCTGCCCGAGAAGGACGGGCACGGCCACGAGGGGCGCGCCGGCGGGAAGAGGCCA
 AGCAGCTGGCCCGGGTCCCGTCTCCCTACGTGCGGACCCCGTGGTGGAGAGTCCAGGCCAACAGCAC
 CTCGAGCCGGGAGGCCGAGCCGCGCAAGGGTGAAGCCGCTACGAGAACCCCAAGAAGAGCTCCGAGGTC
 AAGGTGAAGGAGGAGCGGAAGGAAGACCATGACCTGCCTCCAGAGGCCCGCAGACCCACCGGCCCTCGG
 AGCCCGCCCTCCCAACTCCTCGTCCAGGTGCACCCGGGGCCCTGGCCTCGATGCCATGACCGTGGG
 GGTGACGGGCATTACCCCATGAACAGCATCAGCAGCCTGGACAGGACTCGCATGATGACCCCTTCATG
 GGCATCAGCCCCCTCCCGGGCGGAGAGCGCTTCCCGTACCCTTCTTCCACTGGGACCCATCCGGGACC
 CTTGAGGGATCCTTACCAGAACTTGACATTCACCGGAGAGACCCGCTGGGCAGGGACTTCTGCTAAG
 GAACGACCCGCTCCACCGGCTCTCGACTCCCCGGCTGTACGAAGCCGACCGCTCCTTACGGGACCGGGAG
 CCTCAGACTACAGCCACCACCACCACCACCACCACCACCCTGTCTGTGGACCCTCGGCGGGAGCACG
 AGCGGGGAGGCCACCTGGACGAGCGGGAGCGCTTGACATGCTCAGAGAAGACTACGAGCACACGGCGCT
 CCACTCCGTGACCCCGCTCCCTCGACGACACTCCCCACCCAGCCTCATACCCCGGACTCCCC
 AGCATGCACTATCCCGCATCAGCCCCACCGGGCAACCAGAACGGACTCCTCAACAAGACCCCTCCGA
 CAGCAGCGCTGAGCGCACCTCCCCGCTCATCTCCACGCTGGGGGGCCCGCCGGTCTCTCCAGAAGGAC
 GACTCCTCTGTCCGACAGATAAGGGAGAGGCCCTTCCACACGCTGAAGGATATCGAGGCCCA

ACGCGTACGCGGCCGCTCGAGCAGAACTCATCTCAGAAGAGGATCTGGCAGCAATGATATCCTGGATT
 ACAAGGATGACGACGATAAGGTTTAA

Protein Sequence: >RC218943 representing NM_015570
Red=Cloning site Green=Tags(s)

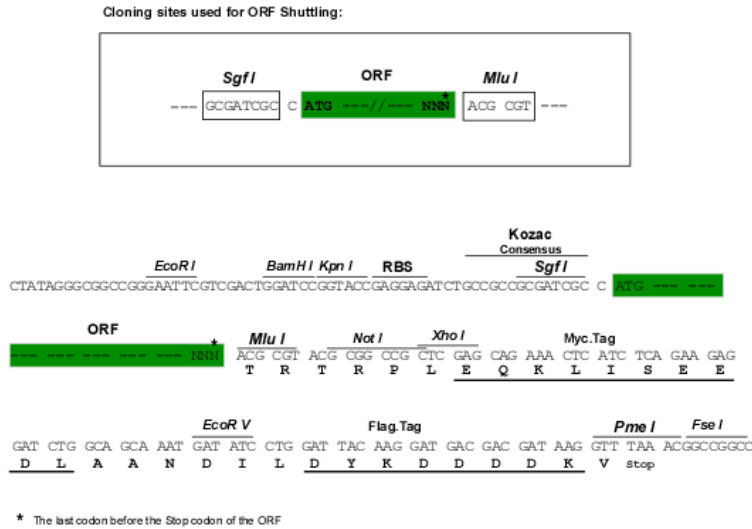
```
MDGPTRGHGLRKKRRSRQRDRERRSRGGLGAGAAGGGGAGRTRALSLASSSGSDKEDNGKPPSSAPSRP
RPPRRKRRESTSAEEDIIDGFAMTSFVTFEALEKDVALKPQERVEKRQTPLTKKKREALTNGLSFHSKKS
RLSHPHHYSSDRENRNLCOHLGKRKKMPKALRQLKPGQNSCRDSDSESASGESKGFHRSRRLSDSS
APSSLGTGYFCSDSDQEEKASDASSEKLFNTVI VNKDPELGVGTLPEHDSQDAGPIVPKISGLERSQEK
SQDCCKEPIFEPVVLKDCPCQVAQPIPQPQTEPQLRAPSPDPLVQRTEAPPQPPPLSTQPPQGPEAQL
QPAPQPQVQRPPRPQSPTQLLHQNLPPVQAHPSAQSLSQPLSAYNSSLSLNSLSSSRSSTPAKTQPAPP
HISHPSASPFLSLPNHSPLHSFTPTLQPPAHSHHPNMFAPPTALPPPPLTSGSLQVAGHPAGSTYSE
QDILRQELNTRFLASQSADRASLGPPPYLRTEFHQHQHQHQHTHQHTHTFTPFPHAIPTAIMPTPA
PPMFDKYPTKVDPFYRHSLFHSYPPAVSGIPPMIPPTGPFGLQGAQPKTSNPIDVAARPGTVPHLLQ
KDPRLTDPFRPMLRKPWKCAMHVHIAWQIYHHQKVKKQMQSDPHKLDGLKPEFLSRPPGSLFGAIH
HPHDLARPSTLFSAGAAHPTGTPFGPPPHSNFLNPAAHLEPFNRPSTFTGLAAVGGNAFGGLGNPSVT
PNSMFGHKDGPVQNFNPNHEPWNRLHRTPPSFPTPPPWLKPGELERSASAAAHDRDRDVKRSDSSYKSD
DKERESVEKRHSHPSPAPVLPVNALGHTRSSTEQIRAHLNTEAREKDKPKERERDHSERKDLAADEHK
AKEGHLPEKDGHGHEGRAAGEEAKQLARVPSYVTRPVVESARPNTSSREAEPKGEPAYENPKSSEV
KYKEERKEDHDLPEAPQTHRASEPPPPNSSSSVHPGPLASMPMTVGVTGIHPMNSISSLDTRMMTPFM
GISPLPGGERFPYPSFHWDPIRDPLRDPYRELDIHRDPLGRDFLLRNDPLHRLSTPRLYEADRSFRDRE
PHDYSHHHHHHHHPLSVDPRREHERGGHLDERERLHMLREDYEHTRLHSVHPASLDGHLPHPSLITPGLP
SMHYPRISPTAGNQGLLNKTPPTAALSAPPPLISTLGGRPVSPRRTTPLSAEIRERPPSHTLKDIEAR
```

TRTRPLEQKLISEEDLAANDILDYKDDDDKV

Chromatograms: https://cdn.origene.com/chromatograms/mk8022_c11.zip

Restriction Sites: SgfI-MluI

Cloning Scheme:

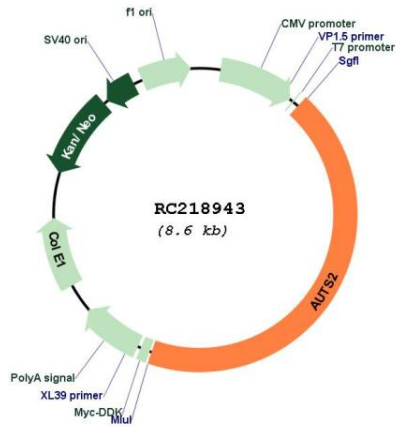


ACCN: NM_015570

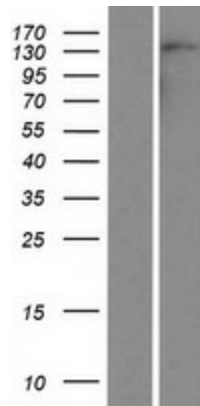
ORF Size: 3777 bp

OTI Disclaimer:	The molecular sequence of this clone aligns with the gene accession number as a point of reference only. However, individual transcript sequences of the same gene can differ through naturally occurring variations (e.g. polymorphisms), each with its own valid existence. This clone is substantially in agreement with the reference, but a complete review of all prevailing variants is recommended prior to use. More info
OTI Annotation:	This clone was engineered to express the complete ORF with an expression tag. Expression varies depending on the nature of the gene.
Components:	The ORF clone is ion-exchange column purified and shipped in a 2D barcoded Matrix tube containing 10ug of transfection-ready, dried plasmid DNA (reconstitute with 100 ul of water).
Reconstitution Method:	<ol style="list-style-type: none">1. Centrifuge at 5,000xg for 5min.2. Carefully open the tube and add 100ul of sterile water to dissolve the DNA.3. Close the tube and incubate for 10 minutes at room temperature.4. Briefly vortex the tube and then do a quick spin (less than 5000xg) to concentrate the liquid at the bottom.5. Store the suspended plasmid at -20°C. The DNA is stable for at least one year from date of shipping when stored at -20°C.
Note:	Plasmids are not sterile. For experiments where strict sterility is required, filtration with 0.22um filter is required.
RefSeq:	NM_015570.4
RefSeq Size:	5972 bp
RefSeq ORF:	3780 bp
Locus ID:	26053
UniProt ID:	Q8WXX7
Cytogenetics:	7q11.22
MW:	138.8 kDa
Gene Summary:	This gene has been implicated in neurodevelopment and as a candidate gene for numerous neurological disorders, including autism spectrum disorders, intellectual disability, and developmental delay. Mutations in this gene have also been associated with non-neurological disorders, such as acute lymphoblastic leukemia, aging of the skin, early-onset androgenetic alopecia, and certain cancers. Alternative splicing results in multiple transcript variants encoding different isoforms. [provided by RefSeq, May 2014]

Product images:



Circular map for RC218943



Western blot validation of overexpression lysate (Cat# [LY414435]) using anti-DDK antibody (Cat# [TA50011-100]). Left: Cell lysates from untransfected HEK293T cells; Right: Cell lysates from HEK293T cells transfected with RC218943 using transfection reagent MegaTran 2.0 (Cat# [TT210002]).