

Product datasheet for RC218925

MAGI3 (NM_152900) Human Tagged ORF Clone

Product data:

Product Type:	Expression Plasmids
Product Name:	MAGI3 (NM_152900) Human Tagged ORF Clone
Tag:	Myc-DDK
Symbol:	MAGI3
Synonyms:	dj730K3.2; MAGI-3
Mammalian Cell Selection:	Neomycin
Vector:	pCMV6-Entry (PS100001)
E. coli Selection:	Kanamycin (25 ug/mL)
ORF Nucleotide Sequence:	>RC218925 ORF sequence Red=Cloning site Blue=ORF Green=Tags(s)

TTTTGTAATACGACTCACTATAGGGCGGCCGGAATTCGTCGACTGGATCCGGTACCGAGGAGATCTGCC
GCC**CGATCGCC**

ATGTCGAAGACGCTGAAGAAGAAGAAGCACTGGCTCAGCAAGGTGCAGGAGTGCGCCGTCTCTGGGCCG
GGCCCCGGGCGACTTCGGCGCGGAGATCCGCGGTGGCGCGGAGCGTGGCGAGTTCCTACCTGGGGCG
GCTCCGCGAGGAGCCCGGGGGGCACCTGCTGCGTCGCTCTGGGCAAGGCGCCAGCCAGGCGATGTG
CTGCTGGAGGTAACGGGACGCCTGTGACGGGCTCACCAACGGGACACCCTGGCTGTCATCCGCCACT
TCCGCGAGCCCATCCGTCTCAAGACTGTGAAACCAGGCAAAGTCATTAATAAAGATTTGCGGCATTACCT
AAGTCTTCAGTTTCAAAAAGGATCAATTGACCACAACTGCAGCAAGTGATCAGAGATAATCTCTACTTG
AGAACCATTCCATGCACTACAAGGGCCCCAGGGATGGAGAAGTACCAGGAGTGGATTATAATTTCAATT
CCGTTGAACAGTTCAAAGCACTGGAAGAGAGTGGAGCATTGTTAGAAAAGTGGGACATATGATGAAAACCT
CTATGGAACCTCCAAGCCTCCAGCAGAACCAGCCCTTTTCAGCCAGATCCAGTTGATCAAGTCCTCTTT
GATAATGAGTTTATGATGCAGAACTCAAAGAAAACGAACGACATCTGTGAGCAAGATGGAAGAATGGATA
GCTCTCTCTGAAGAGGAAGAAGATGAGGACAAGGAAGCTATTAATGGCAGTGGAAACGCGAAAAACAG
AGAGAGGCATTCTGAGTCATCTGACTGGATGAAGACTGTTCCAAGTTACAACCAACAAAATAGCTCCATG
GACTTTAGAAATTATATGATGAGAGATGAGACTCTGGAACCACTGCCAAAAAAGTGGAAATGGCCTACA
CTGACACAGGGATGATCTACTTCAATTGACCACAATACCAAGACAACCACCTGGTTGGATCCTCGTCTTTG
TAAGAAAGCCAAAGCCCTGAAGACTGTGAAGATGGAGAGCTTCTTATGGCTGGGAGAAAAATAGAGGAC
CCTCAGTATGGGACATACTATGTTGATCACCTTAACCAGAAAACCCAGTTTAAAAATCCAGTGGAGGAAG
CCAAAAGGAAAAAGCAGTTAGGACAGGTTGAAATTGGGTCTTCAAACCAGATATGGAATAATCACACTT
CACAAGAGATCCATCCCAGCTTAAAGGTGTCCTTGTTCGAGCATCACTGAAAAAAGCACAATGGGATTT
GGTTTTACTATTATTGGTGGAGATAGACCTGATGAGTTCTACAAGTAAAAATGTGCTGAAAGATGGTC
CCGCGACTCAGGATGGGAAAATGCACCAGGCGATGTTATTGTAGACATCAATGGCAACTGTGCTCCTCGG
TCACACTCATGCAGATGTTGCCAGATGTTCAATTGGTACCTGTCAATCAGTATGTAACCTCACTTTA



[View online »](#)

TGTCGTGGTTATCCACTTCTGATGACAGTGAAGATCCTGTTGTGGACATTGTTGCTGCTACCCCTGTCA
TCAATGGACAGTCATTAACCAAGGGAGAGACTTGCATGAATCCTCAGGATTTAAGCCAGGAGCAATGGT
TCTGGAGCAGAATGGAAAATCGGGACACACTTTGACTGGTGATGGTCTCAATGGACCATCAGATGCAAGT
GAGCAGAGAGTATCCATGGCATCGTCAGGCAGCTCCCAGCCTGAACTAGTGACTATCCCTTTGATTAAGG
GCCCTAAAGGGTTTGGGTTTGAATTGCTGACAGCCCTACTGGACAGAAGGTGAAAATGACTGGATAG
TCAGTGGTGTCAAGGCCCTCAGAAAGGAGATATAATTAAGGAAAATATACCATCAAAATGTGCAGAATTTA
ACACATCTCCAAGTGGTAGAGGTGCTAAAGCAGTTTCCAGTAGGTGCTGATGTACCATTGCTTATCTTAA
GAGGAGGTCCCTCCTTACCAACCAAAAAGTCCAAAATGAAAACAGATAAAAAGGAAAATGCAGGAAGTTT
GGAGGCCATAAATGAGCCTATTCTCAGCCTATGCCTTTTCCACCGAGCATTATCAGGTCAGGATCCCCA
AAATTGGATCCTTCTGAGGTCTACCTGAAATCTAAGACTTTATATGAAGATAAAACCACCAAAACACCAAAG
ATTTGGATGTTTTCTTCGAAAACAAGAGTCAGGGTTTGGCTTCAAGGTGCTAGGAGGAGATGGACCTGA
CCAGTCTATATATATTGGGGCTATTATCCCTGGGAGCAGCTGAGAAAGATGGTCGGCTCCGCGCAGCT
GATGAACATATGTGCATTGATGGAATCCTGTTAAAGGGAAATCACACAAAACAAGCTTGGACCTCATGA
CAACTGCTGCTCGAAATGGCCATGTGTTACTAACTGTCAGACGGAAGATCTTCTATGGAGAAAAACAACC
CGAGGACGACAGCTCTCAGGCCCTCATTCAACACAGAATGGATCTCCCGCCTGAACCGGGCAGAGGTC
CCAGCCAGGCCTGCACCCAGGAGCCCTATGATGTTGTCTTGAAACGAAAAGAAAATGAAGGATTTGGCT
TTGTCATCCTCACCTCAAAAACAACCACTCCAGGAGTTATTCTCATAAAATTTGGCCGAGTCATAGA
AGGAAGTCCGGCTGACCCTGTGAAAAGTGAAGTTGGAGATCATATCTCTGCAGTGAATGGGCAGTCC
ATTGTTGAACTGTCTCATGATAACATTGTTGAGCTGATCAAAGATGCTGGTGTACCCGTCACACTAACGG
TCATTGCTGAAGAAGAGCATCATGGTCCACCATCAGGAACAAACTCAGCCAGGCAAGCCAGCCCTGCA
GCACAGGCCCATGGGACAGTCACAGGCCAACACATACCTGGGGACAGAAGTGCCTAGAAGGTGAAATT
GGAAAAGATGTCTCCACTTCTTACAGACATTCTGGTCAGACCACAAGCACCTTGCACAGCCTGACACCG
CAGTAATTTTCAGTTGTAGGCAGTCGGCACAATCAGAACCCTGGTTGTTATCCAGTAGAGCTGGAGAGAGG
CCCCCGGGCTTTGGATTGAGCCTCCGAGGGGGGAAGGAGTACAACATGGGGCTGTTTCATCCTTCGTCTT
GCTGAAGATGGTCTGCCATCAAAGATGGCAGAATTCATGTTGGTGACCAGATTGTTGAAATCAATGGGG
AACCTACACAAGGAATCACATACTCGAGCAATTGAGCTCATTGAGGCTGGTGGAAATAAAGTTCTTCT
TCTTTTGAGGCCAGGAAGTGGCTTGATACCTGACCATGGTTTGGCTCCTCCGGTCTGTGCTCCTACGTG
AAACCCGAGCAACAT

ACGGCTACGCGGCCGCTCGAGCAGAAACTCATCTCAGAAGAGGATCTGGCAGCAATGATATCCTGGATT
ACAAGGATGACGACGATAAGGTTTAA

Protein Sequence: >RC218925 protein sequence
Red=Cloning site Green=Tags(s)

```
MSKTLKKKKHWL SKVQEC AVSWAGPPGDFGAEIRGGAERGEFPYLGR LREEPGGGTCCVVS GKAPSPGDV
LLEVNGTPV SGLTNRDTLAVIRHFREPIRLKTVKPGKVIN KDLRHYLSLQFQKGSIDHKLQQVIRDNLYL
RTIPCTTRAPRDGEVPGVDYNFISVEQFKALEESGALLESGTYDGNFYGTPKPPAEPSPFPDPVDQVLF
DNEFDAESQRKR TTSVSKMERMDS SLP EEEEEDEK EAIINGSGNAENRERHSESSDWMKTVP SYNQTNSSM
DFRNYMMRDETLEPLPKNWEMAYDTGMIYFIDHNTKTTTWLDPRLCKKAKAPEDCEDGELPYGWEKIED
PQYGYTYVDHLNQKTQFENPVVEEAKRKKQLGQVEIGSSKPDMEKSHFTRDPSQLKGV LVRASLKKSTMGF
GFTIIGDRPDEF LQVKNV LKDGPA AQDGKIAPGDVIVDINGNCVLGHTHADVVQMFQLVPVNQYVNLTL
CRGYLPDDSEDPVVDIVAATPVI NGQSLTKGETCMNPQDFKPGAMVLEQNGKSGHTLTGDGLNGPSDAS
EQRVSMASSGSSQPELVTIPLIKGPKGF GFAIADSPTGQKVKMILDSQWCQGLQKGDIIKEIYHQNVQNL
THLQVVEVLKQFPVGADVPLLILRGGPPSPTKTAKMKTDKKNAGSLEAINEPIQPMPFPSPSIIRSGSP
KLDPSEVYLKSKTLYEDKPPNTKDLDFL RKQESGFGFRVLGGDGPDSIYIGAIPLGAAEKDGR LRAA
DELMCIDGIPVKGKSHKQVLDLMTTAARNGHVLLTVRRKIFYGEKQPEDDSSQAFISTQNGSPRLNRAEV
PARPAPQEPYDVVLQRKENEGFVILTSKNKPPPGV IPHKIGRVI EGSPADRCGLKVG DHI SAVNGQS
IVELSHDNIVQLIKDAGVTVTLTVIAEEHHGPPSGTNSARQSPALQHRPMGQSQANHIPGDRSALEGEI
GKD VSTSYRHSWSDHKHLAQPDTAVISVVGSRHNQNLGCYPVELERGPRGF GFSLRGGKEYNMGLFILRL
AEDGPAIKDGR IHVGDQIVEINGEPTQGITHTRAIELIQAGGNKVL LLLRP GTGLIPDHGLAPSLGCSYV
KPEQH
```

TRTRPLEQKLISEEDLAANDILDYKDDDDKV

Chromatograms: https://cdn.origene.com/chromatograms/mk6677_b06.zip

Restriction Sites: SgfI-MluI

Cloning Scheme:

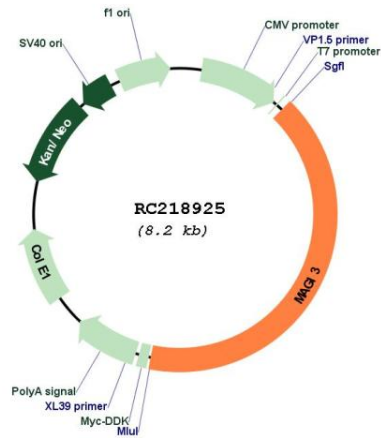


ACCN: NM_152900

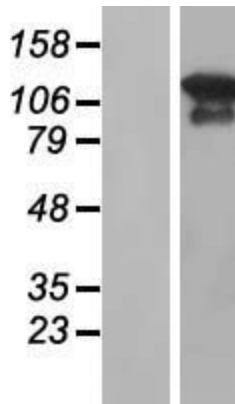
ORF Size: 3375 bp

OTI Disclaimer:	The molecular sequence of this clone aligns with the gene accession number as a point of reference only. However, individual transcript sequences of the same gene can differ through naturally occurring variations (e.g. polymorphisms), each with its own valid existence. This clone is substantially in agreement with the reference, but a complete review of all prevailing variants is recommended prior to use. More info
OTI Annotation:	This clone was engineered to express the complete ORF with an expression tag. Expression varies depending on the nature of the gene.
Components:	The ORF clone is ion-exchange column purified and shipped in a 2D barcoded Matrix tube containing 10ug of transfection-ready, dried plasmid DNA (reconstitute with 100 ul of water).
Reconstitution Method:	<ol style="list-style-type: none">1. Centrifuge at 5,000xg for 5min.2. Carefully open the tube and add 100ul of sterile water to dissolve the DNA.3. Close the tube and incubate for 10 minutes at room temperature.4. Briefly vortex the tube and then do a quick spin (less than 5000xg) to concentrate the liquid at the bottom.5. Store the suspended plasmid at -20°C. The DNA is stable for at least one year from date of shipping when stored at -20°C.
RefSeq:	NM_152900.3
RefSeq Size:	7221 bp
RefSeq ORF:	3378 bp
Locus ID:	260425
UniProt ID:	Q5TCQ9
Cytogenetics:	1p13.2
Protein Families:	Druggable Genome
Protein Pathways:	Tight junction
MW:	123.3 kDa
Gene Summary:	Acts as a scaffolding protein at cell-cell junctions, thereby regulating various cellular and signaling processes. Cooperates with PTEN to modulate the kinase activity of AKT1. Its interaction with PTPRB and tyrosine phosphorylated proteins suggests that it may link receptor tyrosine phosphatase with its substrates at the plasma membrane. In polarized epithelial cells, involved in efficient trafficking of TGFA to the cell surface. Regulates the ability of LPAR2 to activate ERK and RhoA pathways. Regulates the JNK signaling cascade via its interaction with FZD4 and VANGL2.[UniProtKB/Swiss-Prot Function]

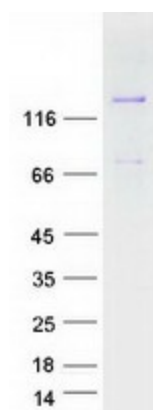
Product images:



Circular map for RC218925



Western blot validation of overexpression lysate (Cat# [LY407262]) using anti-DDK antibody (Cat# [TA50011-100]). Left: Cell lysates from untransfected HEK293T cells; Right: Cell lysates from HEK293T cells transfected with RC218925 using transfection reagent MegaTran 2.0 (Cat# [TT210002]).



Coomassie blue staining of purified MAGI3 protein (Cat# [TP318925]). The protein was produced from HEK293T cells transfected with MAGI3 cDNA clone (Cat# RC218925) using MegaTran 2.0 (Cat# [TT210002]).