

Product datasheet for RC218920L1

Glucokinase (GCK) (NM_033508) Human Tagged Lenti ORF Clone

Product data:

Product Type:	Expression Plasmids
Product Name:	Glucokinase (GCK) (NM_033508) Human Tagged Lenti ORF Clone
Tag:	Myc-DDK
Symbol:	Glucokinase
Synonyms:	FGQTL3; GK; GLK; HHF3; HK4; HKIV; HXKP; LGLK; MODY2; PNDM1
Mammalian Cell Selection:	None
Vector:	pLenti-C-Myc-DDK (PS100064)
E. coli Selection:	Chloramphenicol (34 ug/mL)
ORF Nucleotide Sequence:	The ORF insert of this clone is exactly the same as(RC218920).
Restriction Sites:	SgfI-MluI
Cloning Scheme:	

Cloning sites used for ORF Shuttling:



* The last codon before the Stop codon of the ORF.

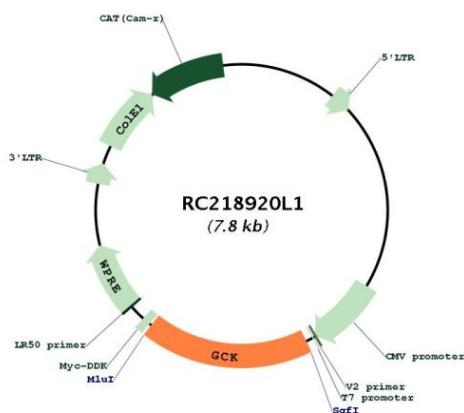
ACCN:	NM_033508
ORF Size:	1392 bp



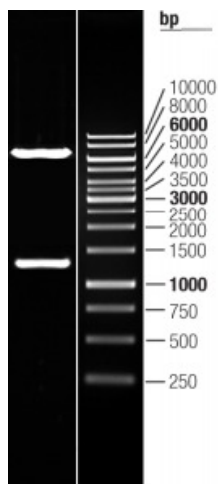
[View online >](#)

OTI Disclaimer:	The molecular sequence of this clone aligns with the gene accession number as a point of reference only. However, individual transcript sequences of the same gene can differ through naturally occurring variations (e.g. polymorphisms), each with its own valid existence. This clone is substantially in agreement with the reference, but a complete review of all prevailing variants is recommended prior to use. More info
OTI Annotation:	This clone was engineered to express the complete ORF with an expression tag. Expression varies depending on the nature of the gene.
Components:	The ORF clone is ion-exchange column purified and shipped in a 2D barcoded Matrix tube containing 10ug of transfection-ready, dried plasmid DNA (reconstitute with 100 ul of water).
Reconstitution Method:	<ol style="list-style-type: none">1. Centrifuge at 5,000xg for 5min.2. Carefully open the tube and add 100ul of sterile water to dissolve the DNA.3. Close the tube and incubate for 10 minutes at room temperature.4. Briefly vortex the tube and then do a quick spin (less than 5000xg) to concentrate the liquid at the bottom.5. Store the suspended plasmid at -20°C. The DNA is stable for at least one year from date of shipping when stored at -20°C.
RefSeq:	NM_033508.1
RefSeq Size:	2566 bp
RefSeq ORF:	1395 bp
Locus ID:	2645
UniProt ID:	P35557
Cytogenetics:	7p13
Protein Families:	Druggable Genome
Protein Pathways:	Amino sugar and nucleotide sugar metabolism, Galactose metabolism, Glycolysis / Gluconeogenesis, Insulin signaling pathway, Maturity onset diabetes of the young, Metabolic pathways, Starch and sucrose metabolism, Type II diabetes mellitus
MW:	51.9 kDa
Gene Summary:	This gene encodes a member of the hexokinase family of proteins. Hexokinases phosphorylate glucose to produce glucose-6-phosphate, the first step in most glucose metabolism pathways. In contrast to other forms of hexokinase, this enzyme is not inhibited by its product glucose-6-phosphate but remains active while glucose is abundant. The use of multiple promoters and alternative splicing of this gene result in distinct protein isoforms that exhibit tissue-specific expression in the pancreas and liver. In the pancreas, this enzyme plays a role in glucose-stimulated insulin secretion, while in the liver, this enzyme is important in glucose uptake and conversion to glycogen. Mutations in this gene that alter enzyme activity have been associated with multiple types of diabetes and hyperinsulinemic hypoglycemia. [provided by RefSeq, Aug 2017]

Product images:



Circular map for RC218920L1



Double digestion of RC218920L1 using SgfI and MluI