

## Product datasheet for RC218918

### LRP6 (NM\_002336) Human Tagged ORF Clone

#### Product data:

Product Type:	Expression Plasmids
Product Name:	LRP6 (NM_002336) Human Tagged ORF Clone
Tag:	Myc-DDK
Symbol:	LRP6
Synonyms:	ADCAD2; STHAG7
Mammalian Cell Selection:	Neomycin
Vector:	pCMV6-Entry (PS100001)
E. coli Selection:	Kanamycin (25 ug/mL)
ORF Nucleotide Sequence:	>RC218918 representing NM_002336 Red=Cloning site Blue=ORF Green=Tags(s)

TTTTGTAATACGACTCACTATAGGGCGGCCGGAATTCGTCGACTGGATCCGGTACCGAGGAGATCTGCC  
GCC**CGATCGCC**

ATGGGGCCGCTCCTGAGGAGCCTCCTGGCCTGCAGTTCTGTGTGCTCCTGAGAGCGGCCCTTTGTTGC  
TTTATGCAAACAGACGGGACTTGCATTGGTTGATGCTACAAATGGCAAAGAGAATGCTACGATTGTAGT  
TGGAGGCTTGGAGGATGCAGCTGCGGTGGACTTTGTGTTAGTCATGGCTTGATACTGGAGTGATGTC  
AGCGAAGAAGCCATTAACGAACAGAATTAACAAAACAGAGTGTGCAGAATGTTGTTGTTTCTGGAT  
TATTGTCCCCGATGGGCTGGCATGTGATTGGCTTGGAGAAAAATGACTGGACAGATTCTGAAACTAA  
TCGGATTGAAGTTTCTAATTTAGATGGATCTTTACGAAAAGTTTTATTTGGCAAGAGTTGGATCAACCC  
AGAGCTATTGCCTTAGATCCTTCAAGTGGTTCATGACTGGACAGACTGGGAGAAAGTGCCAAAGATAG  
AACGTGCTGGAATGGATGGTTCAAGTCGCTTCAATATAATAAACAGTGAATTTACTGGCCAAATGGACT  
GACTTTGGATTATGAAGAACAAAAGCTTTATTGGGCAGATGCAAAACTTAATTTTCATCCACAAATCAAAT  
CTGGATGGAACAAATCGGCAGGCAGTGGTTAAAGGTTCCCTTCCACATCCTTTGCTTGACGTTATTTG  
AGGACATATTGACTGGACTGACTGGAGCACACACTCCATTTGGCTTGAACAAGTATACTGGTGAGGG  
TCTGCGTGAATCCATTCTGACATCTTCTCCCATGGATACATGCCTTCAGCCAACAGAGGCAGCCA  
AATGCCACAAATCCATGTGGAATTGACAATGGGGTTGTTCCCATTTGTGTTTGTGCTCCAGTCAAGC  
CTTTTTATCAGTGTGCTTGCCCACTGGGGTCAAACCTCCTGGAGAATGGAAAAACCTGCAAAGATGGTGC  
CACAGAATTATTGCTTTAGCTCGAAGGACAGACTTGAGACGCATTTCTTTGGATACACCAAGATTTTACA  
GACATTGTTCTGCAGTTAGAAGACATCCGTCATGCCATTGCCATAGATTACGATCCTGTGGAAGGCTACA  
TCTACTGGACTGATGATGAAGTGAGGGCCATACGCCGTTCAATTTAGATGGATCTGGCAGTCAGTTTGT  
GGTCACTGCTCAAATTGCCATCCTGATGGTATTGCTGTGGACTGGGTTGCACGAAATCTTTATTGGACA  
GACTGGCACTGATCGAATAGAAGTGACAAGGCTCAATGGGACCATGAGGAAGATCTTGATTTTCAGAGG  
ACTTAGAGGAACCCGGGCTATTGTGTTAGATCCCATGGTTGGGTACATGATTGGACTGACTGGGAGAG  
AATTCCGAAAATTGAGCGAGCAGCTCTGGATGGTCTGACCGTGTAGTATTGGTTAACACTTCTCTTGGT



[View online »](#)

TGGCCAAATGGTTTAGCCTTGGATTATGATGAAGGCAAAATATACTGGGGAGATGCCAAAACAGACAAGA  
TTGAGGTTATGAATACTGATGGCACTGGGAGACGAGTACTAGTGGAAAGACAAAATTCCTCACATATTTGG  
ATTTACTTTGTTGGGTGACTATGTTTACTGGACTGACTGGCAGAGGCGTAGCATTGAAAGAGTTCATAAA  
CGAAGTGCAGAGAGGGAAGTGATCATAGATCAGCTGCCTGACCTCATGGCCTAAAGGCTACAAATGTTCC  
ATCGAGTGATTGGTTCCAACCCCTGTGCTGAGGAAAACGGGGGATGTAGCCATCTCTGCCTCTATAGACC  
TCAGGGCCTTCGCTGTGCTTGCCTATTGGCTTTGAACATCATAGTGCATGAAGACCTGCATTGTCCCA  
GAGGCTTTCCCTTTGTTTTACGGAGAGCAGATATCAGACGAATTTCTCTGAAAACAAACAATAATAATG  
TGGCTATTCACACTACTGGTGTCAAAGAAGCTTCTGCTTTGGATTTTGTGTGACAGACAACCGAATTTA  
TTGGACTGATATCACTCAAGACCATCAGCAGAGCCTTTATGAATGGCAGTGCCTGGAACATGTGGTA  
GAATTCGGCTTAGATTATCCAGAAGGCATGGCAGTAGACTGGCTTGGGAAGAACTGTACTGGGCAGACA  
CAGGAACGAATCGAATTGAGGTGTCAAAGTTGGATGGGCAGCACCAGCAAGTTTTGGTGTGGAAAGACCT  
AGATAGTCCCAGAGCTCTCGCTTGGACCCTGCCGAAGGATTTATGTATTGGACTGAATGGGGTGGAAAA  
CCTAAGATAGACAGAGCTGCAATGGATGGAAGTGAACGTACTACCTTAGTTCCAATGTGGGGCGGGCAA  
ACGGCCTAACTATTGATTATGCTAAAAGGAGGCTTTATTGGACAGACCTGGACACCAACTAATAGAATC  
TTCAAATATGCTTGGGCTCAACCGTGAAGTTATAGCAGATGACTTGCCTCATCTTTTGGCTTAACTCAG  
TACCAAGATTATATCTACTGGACGGACTGGAGCCGACGACGATTGAGCGTGCCAAACAAAACAGTGGCC  
AAAACCGCACCATCATTAGGGCCATTTGGATTATGTGATGGACATCCTCGTCTTCACTCATCTCGACA  
GTCAGGGTGAATGAATGTGCTTCCAGCAATGGCACTGCTCCCACCTCTGCTTGGCTGTGCCAGTTGGG  
GGTTTTGTTTGGATGCCCTGCCACTACTCTTAAATGCTGACAACAGGACTTGTAGTGTCTCCTACGA  
CTTTCCTGCTCTTCAGTCAAAGAGTGCATCAACCGCATGGTATTGATGAACAACAGAGCCCCGACAT  
CATCTTCCCATCCACAGCCTTCGGAATGTCCGGGCCATTGACTATGACCCACTGGACAAGCAACTCTAT  
TGGATTGACTCAGACAAAACATGATCCGAAAGCACAAGAAGATGGCAGCCAGGGCTTTACTGTGGTTG  
TGAGCTCAGTCCGAGTCAAGACTGAAACCTGAAACCTATGACCTCAGCATTGATTTACAGCGGCTA  
CATCTACTGGACTTGTGAGGCTACCAATGTCATTAATGTGACAAGATTAGATGGGAGATCAGTTGGAGTG  
GTGCTGAAAGGCGAGCAGGACAGACCTCGAGCCATTGTGGTAAACCCAGAGAAAGGGTATATGATTTTAA  
CCAATCTTCAGGAAAGTCTCCTAAAATGAACGGGCTGCTTTGGATGGGACAGAACGGGAGTCTCCTT  
TTTCAGTGGCTTAAAGTAAACCAATTGCTTTAGCCCTTGTAGCAGGCTGGGCAAGCTCTTTTGGGCTGAT  
TCAGATCTCCGGCGAATTGAAAGCAGTGTCTCTCAGGTGCTAACCAGGATAGTATTAGAAGACTCCAATA  
TCTTGCAGCCTGTGGGACTTACTGTGTTGAAAACCTGGCTCTATTGGATTGATAAACAGCAGCAAATGAT  
TGAAAAAATTGACATGACAGGTGAGAGGGTGAACCAAGTCCAAGCTCGAATTGCCAGCTTAGTGAC  
ATTCATGCAGTAAAGGAGCTGAACCTTCAAGAATACAGACAGCACCTTGTGCTCAGGATAATGGTGGCT  
GTTACATATTTGCTTGTAAAGGGGGATGGTACTACAAGGTGTTCTTGGCCCATGCACCTGGTTCTACT  
TCAAGATGAGCTATCATGTGGAGAACCTCCAACATGTTCTCCTCAGCAGTTTACTTGTTCACGGGGGAA  
ATTGACTGTATCCCTGTGGCTTGGCGGTGCGATGGGTTTACTGAATGTGAAGACCACAGTGTGAAGTCA  
ATTGTCCTGTATGCTCAGAGTCCAGTTCAGTGTGCCAGTGGGCAGTGTATTGATGGTGGCCCTCCGATG  
CAATGGAGATGCAAACTGCCAGGACAAAATCAGATGAGAAGAACTGTGAAGTGTCTTTGTTTAAATGATCAG  
TTCCGCTGTGCCAATGGTCAAGTGCATTGGAAAGCACAAGAAGTGTATCAATGTGGATTGCAGTGACA  
AGTCAGATGAAGTGGATTGTTATCCGACTGAAGAACCAGCACACAGGCCACCAATACAGTTGGTTCTGT  
TATTGGCGTAATTGTACCATTTTTGTGCTGGAAGTGTACTTTATCTGCCAGAGGATGTTGTGTTCCA  
CGTATGAAGGGAGATGGGAAAATGACTAATGACTATGTAGTTTATGACAGGCTTCTGTGCCTCTTG  
GTTATGTGCCACACCAAGTTCTTTGTGCTGAGGATCTCTCCAGGAATGTCTCGAGGTAATCAATGATCAG  
CTCCCTCAGTATCATGGGGGAAGCAGTGGACCCCTATGACCGAGCCCATGTTACAGGAGCATCATCA  
AGTAGTCTTCAAGCACCAAGGCACTTACTTCCCTGCAATTTTGAACCTCCACCATCCCAGCCACAG  
AGCGATCACATTACACTATGGAATTTGGATATTCTTCAAACAGTCTTCCACTCATAGGTCATACAGCTA  
CAGGCCATATAGTACCAGCCTTGCACCCCCACCACCCCTGCAGCACAGATGTTTGTGACAGTGC  
TATGCTCCTAGTCGGAGAATGACCTCAGTGGCAACAGCCAAGGGCTATACCAGTACTTGAAGTATGATT  
CAGAACCTGTGCCCCACCTCCACACCCCGAAGCCAATACTTGTGACGAGGAGAACTATGAAAGCTG  
CCCACCTTCTCCATACACAGAGAGGAGCTATTCTCATCCTCTACCCACCGCCACCCTCTCCCTGTACA  
GACTCCTCC

ACGCGTACGCGGCCGCTCGAGCAGAACTCATCTCAGAAGAGGATCTGGCAGCAAATGATATCCTGGATT  
ACAAGGATGACGACGATAAGGTTTAA

Protein Sequence: >RC218918 representing NM\_002336  
 Red=Cloning site Green=Tags(s)

MGAVLRSLACSFVLLRAAPLLLYANRRDLRLVDATNGKENATIVVGGLEDAAAVDFVFSHGLIYWSDV  
 SEEAIKRTEFNKTESVQNVVVSGLLSPDGLACDWLGEKLYWTDSETNRIEVSNLDGSLRKVLFWQELDQP  
 RAIALDPSSSGFMYWTDWGEVPKIERAGMDGSSRFIIINSEIYWPNGLLDYEEQKLYWADAKLNF IHKSN  
 LDGTNRQAVVKGSLPHPFALTLFEDILYWTDWSTHSILACNKYTGEGLREIHSDFSPMDIHAFSQQRP  
 NATNPCGIDNGGCSHLCLMSPVKPFYQCACPTGVKLENGKTKDGAPELLLLARRDLRRLISLDPDFT  
 DIVLQLEDIRHAIADYDPVEGYIYWTDDEVRAIRRSFIDGSGSQFVVTQAIAHPDGIADVVARNLWY  
 DTGTDRIEVRTLNMTMRKILISEDLEEPRAIVLDPVMGYMYWTDWGEIPKIERAALDGS DRVVLVNTSLG  
 WPNGLALDYDEGKIYWGDAKTDKIEVMNTDGTGRRVLVEDKIPHIFGFTLLGDYVYWTDWQRRSIEVHK  
 RSAEREVIDQLPDLMLKATNVHRVIGSNPCAEEENGCSHLCLYRQGLRCACPIGFELISDMKTCIVP  
 EAFLLFSRRADIRRIISLETNNNNVAIPLTGVKEASALDFDVTDNRIYWTDISLKTISRAFMNGSALEHV  
 EFGLDYPEGMAVDWLGNLYWADTGTNRIEVS KL DGQHRQV L VWKDL DSPRALALDPAEGFMYWTEWGGK  
 PKIDRAAMDGSERTTLV PNVGRANGLTIDYAKRRLYWTDLDTNLIESSNMLGLNREVIADDLPHPFGLTQ  
 YQDIYIYWTDWSRRSIEERANKTSGQNRTIIQGHLDYVMDILVFHSSRQSGWNECASSNGHC SHLCLAVPVG  
 GFVCGCPAHYSLNADNRTC SAPTTFLFSQKSAINRMVIDEQQSPDIILPIHSLRNVRAIDYDPLDKQLY  
 WIDSRQNMIRKAQEDGSGQFTVVVSSVPSQNLEIQPYDLSIDIYSRYIYWTCEATNVINVRTLDGRSVGV  
 VLKGEQDRPRAIVVNPEKGYMYFTNLQERSPKIERAALDGTEREVLFSSGLSKPIALALDSRLGKLFWAD  
 SDLRRIESSDLSGANRIVLEDSNILQPVG LTVFENWL YWIDKQQQMIEKIDMTGREGRTKQVARIQLSD  
 IHAVKELNLQEYRQHPCAQDNGGCSHLCLVKDGTTRCSCPMHLVLLQDELSCGEPPTCSPQOFTCTGTE  
 IDCIPVAWRCDGFTECEDHSDENCPVCSESQFQCASGQCIDGALRCNGDANCQDKSDEKNCEVLCIDQ  
 FRCANGQCIGKHKKCDHNVDCSDKSDDELDCYPTTEEPAPQATNTVGSVIGVIVTIFVSGTVYVICQRMLCP  
 RMKGDGETMTNDYVYVHGPASVPLGYVPHPSLSSGSLPGMSRGKSMISLSSIMGGSSGPPYDRAHV TGASS  
 SSSSSTKGTYPAILNPPPSPATERSHYTMEFGYSSNSPSTHRSYRYPYSYRHFAPPTTPCSTDVDCSD  
 YAPSRMTSVATAKGYTSDLNYDSEVPPPPPTPRSQYLSAEENYESCPPSPYTERSYSHLLYPPPPSPCT  
 DSS

TRTRPLEQKLISEEDLAANDILDYKDDDDKV

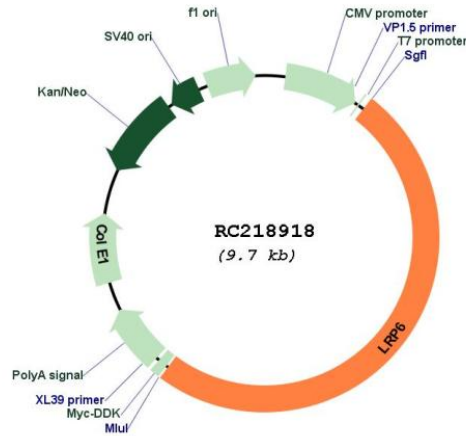
Chromatograms: [https://cdn.origene.com/chromatograms/mk6259\\_h12.zip](https://cdn.origene.com/chromatograms/mk6259_h12.zip)

Restriction Sites: Sgfl-MluI

Cloning Scheme:



## Plasmid Map:



ACCN: NM\_002336

ORF Size: 4839 bp

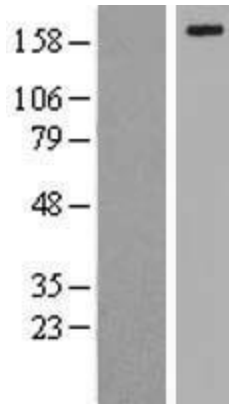
**OTI Disclaimer:** Due to the inherent nature of this plasmid, standard methods to replicate additional amounts of DNA in *E. coli* are highly likely to result in mutations and/or rearrangements. Therefore, OriGene does not guarantee the capability to replicate this plasmid DNA. Additional amounts of DNA can be purchased from OriGene with batch-specific, full-sequence verification at a reduced cost. Please contact our customer care team at [custsupport@origene.com](mailto:custsupport@origene.com) or by calling 301.340.3188 option 3 for pricing and delivery.

The molecular sequence of this clone aligns with the gene accession number as a point of reference only. However, individual transcript sequences of the same gene can differ through naturally occurring variations (e.g. polymorphisms), each with its own valid existence. This clone is substantially in agreement with the reference, but a complete review of all prevailing variants is recommended prior to use. [More info](#)

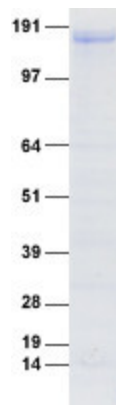
**OTI Annotation:** This clone was engineered to express the complete ORF with an expression tag. Expression varies depending on the nature of the gene.

**Components:** The ORF clone is ion-exchange column purified and shipped in a 2D barcoded Matrix tube containing 10ug of transfection-ready, dried plasmid DNA (reconstitute with 100 ul of water).

<b>Reconstitution Method:</b>	<ol style="list-style-type: none"><li>1. Centrifuge at 5,000xg for 5min.</li><li>2. Carefully open the tube and add 100ul of sterile water to dissolve the DNA.</li><li>3. Close the tube and incubate for 10 minutes at room temperature.</li><li>4. Briefly vortex the tube and then do a quick spin (less than 5000xg) to concentrate the liquid at the bottom.</li><li>5. Store the suspended plasmid at -20°C. The DNA is stable for at least one year from date of shipping when stored at -20°C.</li></ol>
<b>RefSeq:</b>	<a href="#">NM_002336.1</a> , <a href="#">NP_002327.1</a>
<b>RefSeq Size:</b>	5301 bp
<b>RefSeq ORF:</b>	4842 bp
<b>Locus ID:</b>	4040
<b>UniProt ID:</b>	<a href="#">O75581</a>
<b>Cytogenetics:</b>	12p13.2
<b>Domains:</b>	ldl_recept_b, ldl_recept_a, EGF, EGF
<b>Protein Families:</b>	Druggable Genome, Transmembrane
<b>Protein Pathways:</b>	Wnt signaling pathway
<b>MW:</b>	180.44 kDa
<b>Gene Summary:</b>	<p>This gene encodes a member of the low density lipoprotein (LDL) receptor gene family. LDL receptors are transmembrane cell surface proteins involved in receptor-mediated endocytosis of lipoprotein and protein ligands. The protein encoded by this gene functions as a receptor or, with Frizzled, a co-receptor for Wnt and thereby transmits the canonical Wnt/beta-catenin signaling cascade. Through its interaction with the Wnt/beta-catenin signaling cascade this gene plays a role in the regulation of cell differentiation, proliferation, and migration and the development of many cancer types. This protein undergoes gamma-secretase dependent RIP- (regulated intramembrane proteolysis) processing but the precise locations of the cleavage sites have not been determined.[provided by RefSeq, Dec 2009]</p>

**Product images:**

Western blot validation of overexpression lysate (Cat# [LY419396]) using anti-DDK antibody (Cat# [TA50011-100]). Left: Cell lysates from untransfected HEK293T cells; Right: Cell lysates from HEK293T cells transfected with RC218918 using transfection reagent MegaTran 2.0 (Cat# [TT210002]).



Coomassie blue staining of purified LRP6 protein (Cat# [TP318918]). The protein was produced from HEK293T cells transfected with LRP6 cDNA clone (Cat# RC218918) using MegaTran 2.0 (Cat# [TT210002]).