

Product datasheet for RC218912

FAM3C (NM_001040020) Human Tagged ORF Clone

Product data:

Product Type:	Expression Plasmids
Product Name:	FAM3C (NM_001040020) Human Tagged ORF Clone
Tag:	Myc-DDK
Symbol:	FAM3C
Synonyms:	GS3786; ILEI
Mammalian Cell Selection:	Neomycin
Vector:	pCMV6-Entry (PS100001)
E. coli Selection:	Kanamycin (25 ug/mL)
ORF Nucleotide Sequence:	>RC218912 ORF sequence Red=Cloning site Blue=ORF Green=Tags(s)

TTTTGTAATACGACTCACTATAGGGCGCCGGAATTCGTCGACTGGATCCGGTACCGAGGAGATCTGCC
GCC**CGATCGCC**

ATGAGGGTAGCAGGTGCTGCAAAGTTGGTGGTAGCTGTGGCAGTGTTCCTACTGACATTTTATGTTATTT
CTCAAGTATTTGAAATAAAAATGGATGCAAGTTTAGGAAATCTATTTGCAAGATCAGCATTGGACACAGC
TGCACGTTCTACAAAGCCTCCCAGATATAAGTGTGGGATCTCAAAGCTTGCCCTGAGAAGCATTGCT
TTTAAATGGCAAGTGGAGCAGCCAACGTGGTGGGACCCAAAATCTGCCTGGAAGATAATGTTTTAATGA
GTGGTGTAAAGAATAATGTTGGAAGAGGGATCAATGTTGCCTTGGCAAATGGAAAAACAGGAGAAGTATT
AGACACTAAATATTTGACATGTGGGGAGGAGATGTGGCACCATTATTGAGTTTCTGAAGGCCATACAA
GATGGAACAATAGTTTTAATGGGAACATACGATGATGGAGCAACCAAACTCAATGATGAGGCACGGCGGC
TCATTGCTGATTTGGGGAGCACATCTATTACTAATCTTGGTTTTAGAGACAACTGGGTCTTCTGTGGTGG
GAAGGGCATTAAAGACAAAAGCCCTTTTGAACAGCACATAAAGAACAATAAGGATACAAACAAATATGAA
GGATGGCCTGAAGTTGTAGAAATGGAAGGATGCATCCCCAGAAGCAAGAC

ACGCGTACGCGGCGCTCGAGCAGAAACTCATCTCAGAAGAGGATCTGGCAGCAAATGATATCCTGGATT
ACAAGGATGACGACGATAAGGTTTAA



[View online »](#)

Protein Sequence: >RC218912 protein sequence
Red=Cloning site Green=Tags(s)

MRVAGAAKLVVAVAVFLLTFYVISQVFEIKMDASLGNLFARSALDTAARSTKPPRYKCGISKACPEKHFA
 FKMASGAANVVGPKICLEDNVLMSGVKNNVGRGINVALANGKTGEVLDTKYFDMWGGDVAPFIEFLKAIQ
 DGTIVLMGTYDDGATKLNDEARRLIADLGSTITNLGFRDNWVFCGGKGIKTKSPFEQHIKNNKDTNKYE
 GWPEVVEMEGCIPOKQD

TRTRPLEQKLISEEDLAANDILDYKDDDDKV

Chromatograms: https://cdn.origene.com/chromatograms/mk6679_f05.zip

Restriction Sites: SgfI-MluI

Cloning Scheme:

Cloning sites used for ORF Shuttling:



* The last codon before the Stop codon of the ORF

ACCN: NM_001040020

ORF Size: 681 bp

OTI Disclaimer: The molecular sequence of this clone aligns with the gene accession number as a point of reference only. However, individual transcript sequences of the same gene can differ through naturally occurring variations (e.g. polymorphisms), each with its own valid existence. This clone is substantially in agreement with the reference, but a complete review of all prevailing variants is recommended prior to use. [More info](#)

OTI Annotation: This clone was engineered to express the complete ORF with an expression tag. Expression varies depending on the nature of the gene.

Components: The ORF clone is ion-exchange column purified and shipped in a 2D barcoded Matrix tube containing 10ug of transfection-ready, dried plasmid DNA (reconstitute with 100 ul of water).

Reconstitution Method:

1. Centrifuge at 5,000xg for 5min.
2. Carefully open the tube and add 100ul of sterile water to dissolve the DNA.
3. Close the tube and incubate for 10 minutes at room temperature.
4. Briefly vortex the tube and then do a quick spin (less than 5000xg) to concentrate the liquid at the bottom.
5. Store the suspended plasmid at -20°C. The DNA is stable for at least one year from date of shipping when stored at -20°C.

Note: Plasmids are not sterile. For experiments where strict sterility is required, filtration with 0.22um filter is required.

RefSeq: [NM_001040020.1](#), [NP_001035109.1](#)

RefSeq Size: 2512 bp

RefSeq ORF: 684 bp

Locus ID: 10447

UniProt ID: [Q92520](#)

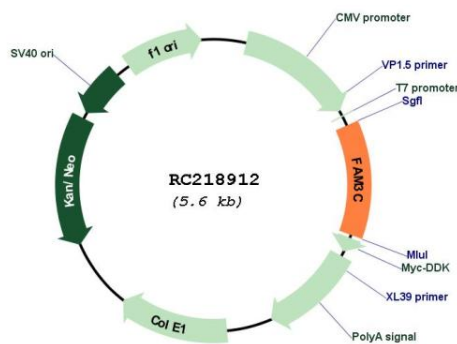
Cytogenetics: 7q31.31

Protein Families: Secreted Protein, Transmembrane

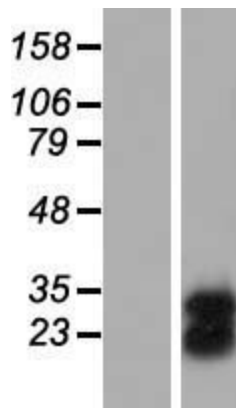
MW: 24.7 kDa

Gene Summary: This gene is a member of the family with sequence similarity 3 (FAM3) family and encodes a secreted protein with a GG domain. A change in expression of this protein has been noted in pancreatic cancer-derived cells. [provided by RefSeq, Mar 2010]

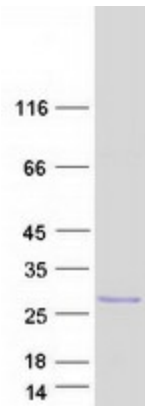
Product images:



Circular map for RC218912



Western blot validation of overexpression lysate (Cat# [LY421876]) using anti-DDK antibody (Cat# [TA50011-100]). Left: Cell lysates from untransfected HEK293T cells; Right: Cell lysates from HEK293T cells transfected with RC218912 using transfection reagent MegaTran 2.0 (Cat# [TT210002]).



Coomassie blue staining of purified FAM3C protein (Cat# [TP318912]). The protein was produced from HEK293T cells transfected with FAM3C cDNA clone (Cat# RC218912) using MegaTran 2.0 (Cat# [TT210002]).