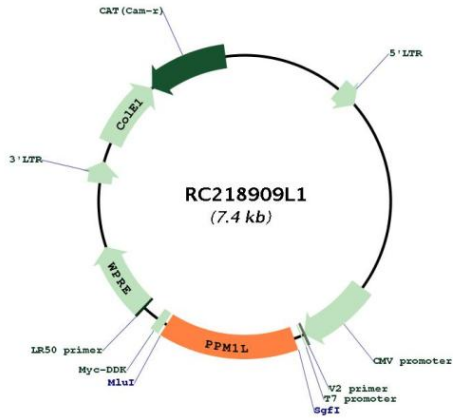


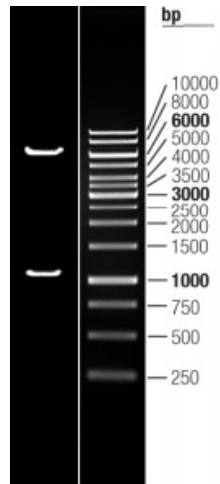


<b>OTI Disclaimer:</b>	The molecular sequence of this clone aligns with the gene accession number as a point of reference only. However, individual transcript sequences of the same gene can differ through naturally occurring variations (e.g. polymorphisms), each with its own valid existence. This clone is substantially in agreement with the reference, but a complete review of all prevailing variants is recommended prior to use. <a href="#">More info</a>
<b>OTI Annotation:</b>	This clone was engineered to express the complete ORF with an expression tag. Expression varies depending on the nature of the gene.
<b>Components:</b>	The ORF clone is ion-exchange column purified and shipped in a 2D barcoded Matrix tube containing 10ug of transfection-ready, dried plasmid DNA (reconstitute with 100 ul of water).
<b>Reconstitution Method:</b>	<ol style="list-style-type: none"><li>1. Centrifuge at 5,000xg for 5min.</li><li>2. Carefully open the tube and add 100ul of sterile water to dissolve the DNA.</li><li>3. Close the tube and incubate for 10 minutes at room temperature.</li><li>4. Briefly vortex the tube and then do a quick spin (less than 5000xg) to concentrate the liquid at the bottom.</li><li>5. Store the suspended plasmid at -20°C. The DNA is stable for at least one year from date of shipping when stored at -20°C.</li></ol>
<b>RefSeq:</b>	<a href="#">NM_139245.2</a>
<b>RefSeq Size:</b>	3056 bp
<b>RefSeq ORF:</b>	1083 bp
<b>Locus ID:</b>	151742
<b>UniProt ID:</b>	<a href="#">Q5SGD2</a>
<b>Cytogenetics:</b>	3q25.33-q26.1
<b>Domains:</b>	PP2C
<b>Protein Families:</b>	Druggable Genome, Phosphatase
<b>MW:</b>	40.9 kDa
<b>Gene Summary:</b>	The protein encoded by this gene is a magnesium or manganese-requiring phosphatase that is involved in several signaling pathways. The encoded protein downregulates apoptosis signal-regulating kinase 1, a protein that initiates a signaling cascade that leads to apoptosis when cells are subjected to cytotoxic stresses. This protein also is an endoplasmic reticulum transmembrane protein that helps regulate ceramide transport from the endoplasmic reticulum to the Golgi apparatus. Finally, this gene may be involved in adiposity since it is upregulated in adipose tissues. Several transcript variants encoding different isoforms have been found for this gene. [provided by RefSeq, Dec 2015]

Product images:



Circular map for RC218909L1



Double digestion of RC218909L1 using SgfI and MluI