

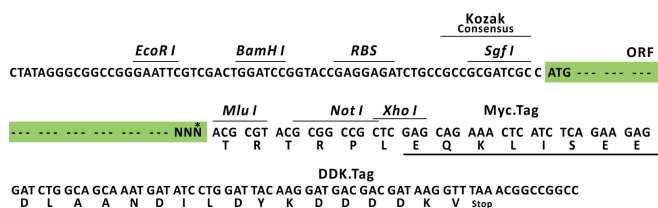
Product datasheet for RC218907L1

HERC6 (NM_017912) Human Tagged Lenti ORF Clone

Product data:

Product Type:	Expression Plasmids
Product Name:	HERC6 (NM_017912) Human Tagged Lenti ORF Clone
Tag:	Myc-DDK
Symbol:	HERC6
Mammalian Cell Selection:	None
Vector:	pLenti-C-Myc-DDK (PS100064)
E. coli Selection:	Chloramphenicol (34 ug/mL)
ORF Nucleotide Sequence:	The ORF insert of this clone is exactly the same as(RC218907).
Restriction Sites:	SgfI-MluI
Cloning Scheme:	

Cloning sites used for ORF Shuttling:



* The last codon before the Stop codon of the ORF.

ACCN: NM_017912

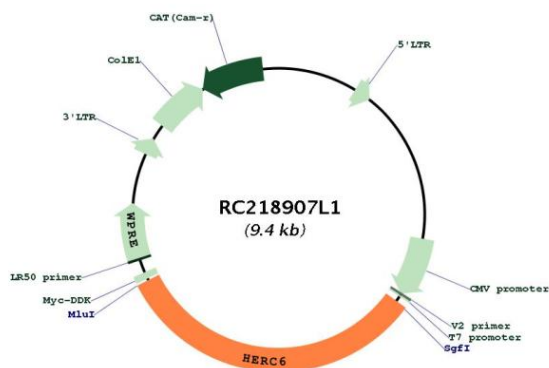
ORF Size: 3066 bp



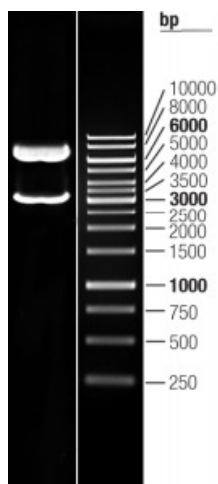
[View online »](#)

OTI Disclaimer:	The molecular sequence of this clone aligns with the gene accession number as a point of reference only. However, individual transcript sequences of the same gene can differ through naturally occurring variations (e.g. polymorphisms), each with its own valid existence. This clone is substantially in agreement with the reference, but a complete review of all prevailing variants is recommended prior to use. More info
OTI Annotation:	This clone was engineered to express the complete ORF with an expression tag. Expression varies depending on the nature of the gene.
Components:	The ORF clone is ion-exchange column purified and shipped in a 2D barcoded Matrix tube containing 10ug of transfection-ready, dried plasmid DNA (reconstitute with 100 ul of water).
Reconstitution Method:	<ol style="list-style-type: none"> 1. Centrifuge at 5,000xg for 5min. 2. Carefully open the tube and add 100ul of sterile water to dissolve the DNA. 3. Close the tube and incubate for 10 minutes at room temperature. 4. Briefly vortex the tube and then do a quick spin (less than 5000xg) to concentrate the liquid at the bottom. 5. Store the suspended plasmid at -20°C. The DNA is stable for at least one year from date of shipping when stored at -20°C.
RefSeq:	NM_017912.3
RefSeq Size:	3903 bp
RefSeq ORF:	3069 bp
Locus ID:	55008
UniProt ID:	Q8IVU3
Cytogenetics:	4q22.1
Domains:	HECT
Protein Families:	Druggable Genome
MW:	114.9 kDa
Gene Summary:	HERC6 belongs to the HERC family of ubiquitin ligases, all of which contain a HECT domain and at least 1 RCC1 (MIM 179710)-like domain (RLD). The 350-amino acid HECT domain is predicted to catalyze the formation of a thioester with ubiquitin before transferring it to a substrate, and the RLD is predicted to act as a guanine nucleotide exchange factor for small G proteins (Hochrainer et al., 2005 [PubMed 15676274]).[supplied by OMIM, Mar 2008]

Product images:



Circular map for RC218907L1



Double digestion of RC218907L1 using SgfI and MluI