

Product datasheet for RC218907

HERC6 (NM_017912) Human Tagged ORF Clone

Product data:

Product Type:	Expression Plasmids
Product Name:	HERC6 (NM_017912) Human Tagged ORF Clone
Tag:	Myc-DDK
Symbol:	HERC6
Mammalian Cell Selection:	Neomycin
Vector:	pCMV6-Entry (PS100001)
E. coli Selection:	Kanamycin (25 ug/mL)
ORF Nucleotide Sequence:	>RC218907 representing NM_017912 Red=Cloning site Blue=ORF Green=Tags(s)

TTTTGTAATACGACTCACTATAGGGCGGCCGGGAATTCGTCGACTGGATCCGGTACCGAGGAGATCTGCC
GCCCGATCGCC

ATGTACTTCTGTTGGGGCGCCGACTCCAGGGAGCTGCAGCGCCGGAGGACGGCGGGCAGCCCCGGGGCTG
AGCTACTGCAGGCGGCCAGCGGGGAGCGCCACTCTCTGCTGCTGCTGACCAACCAGGGTCTCTCGTG
CGGAGACAACAGCAGGGGTGACGTGGGCCGAGGGGCGCGCAGCGCGGGGAGCTGCCAGAACCAATTCAG
GCATTGGAAACCCTAATTGTTGATCTCGTGAGCTGCGGGAAGGAGCACTCCCTGGCTGTGTGCCACAAG
GAAGGGTCTTCGCATGGGGAGCTGGTTCTGAAGGGCAGCTGGGGATTGGAGAATTCAGGAAATAAGTTT
CACACCTAAGAAAATAATGACTCTGAATGATATAAAAAATAATACAAGTTTCTGTGGACTACCACTCC
CTGGCATTATCAAAGATAGCCAAGTGTTTTCTGGGAAAGAACAAGCCATGGGCAGCTGGGCTTGGGGA
AGGAGTCCCCTCCCAAGCCAGCCCGCAGAGGGTGAGTCCCTGGAGGGGATCCCACTGGCTCAGGTGGC
TGCCGGAGGGGCTCACAGCTTGGCCCTGTCTCTGTGGGACTTCGTTTGGCTGGGGAAGTAACAGTGCC
GGGCAGCTGGCCCTCAGTGGCGTAATGTCCCAGTGCAAAGCAACAAGCCTCTCTCAGTCGGTGCCTGA
AGAATCTAGGTGTGGTTTATATCAGCTGTGGTGATGCACACACTGCGGTGCTTACCCAGGACGGAAAGT
GTTACATTTGGAGACAATCGCTCTGGACAGCTGGGATACAGCCCACTCCTGAGAAGAGAGGTCCACAA
CTTGTTGAAAGAATTGATGGCCTAGTTTTCGAGATAGATTGTGGAAGTTATCACACCCTGGCATATGTGC
ACACCACTGGTCAGGTGGTATCTTTTGGTCATGGACCAAGTGACACAAGCAAGCCAACTCATCCGGAGGC
CCTGACAGAGAATTTGACATTAGCTGCCTGATTTCTGCTGAAGACTTCGTGGATGTTCAAGTCAAACAC
ATTTTTGCTGGAACATATGCCAATTTGTGACAACTCATCAGGATACTAGTTCCACACGTGCTCCCGGGA
AAACCCTGCCAGAAAATAAGCCGAATTAGCCAGTCCATGGCAGAAAAATGGATAGCAGTGAAGAAGAAG
TACTGAACATGAAATGGCTAAAAGTGAATTAGAATGATATTTTCATCTCCTGCTGTGACTGCAAGT
TTTTTAAAGAAAAGAGGAAGTGGAGAAACGACTTCATTGATGTGGACTTAGAAATGGCAAGAGATACCT
TCAAGAAGTTAACAAAAAGGAATGGATTTCTTCATGATAACTACGTGTCTCGAGGATGATCTGCTCAG
AGCTCTTCATGCCATTTCCACACCAAGAAGCTTTATCAGTTTTCTCCTGCTCCAGAAATGCTCTGTG
ATGCATGATTCTAAGAAGTGAAGAACCCTGGTGGTTCCATTTGCAAGGCTGTGTGTGAAATGAGTAAAC
AATCTTTGCAAGTCTAAAGAAGTGTGGGCATTTTTGCAAGAATCTTCTCTGAATCCGCTGATCCAGAT



[View online »](#)

GCTTAAAGCAGCCATCATCTCTCAGCTGCTTCATCAGACTAAAACCGAACAGGATCACTGTAATGTTAAA
 GCTCTTTTAGGAATGATGAAAGAACTGCATAAGGTAACAAAGCTAACTGTCGACTACCAGAAAATACTT
 TCAACATAAATGAACTCTCCAATTATTAACCTTTTATATAGATAGAGGAAGACAGCTCTTTCCGGATAA
 CCACCTGATACCTGCAGAAACCCCAAGTCTGTTATTTTCAGTGATTTTCCATTTATCTTAATTCGCTA
 TCCAAAATTAATTATTGCAAGCTGATTCACATATAAAGATGCAGATGTCAGAAAAGAAAGCATAACATGC
 TTATGCATGAAACAATTCTGCAAAAAAGGATGAATTTCCCTCCATCACCCAGATTTACTTAGAGACTGAG
 ACGAAGTCGCCTGGTTAAAGATGCTCTGGTCAATTAAGTCAAGCTGAAGCTACTGACTCTGCAAAGTA
 TTAGTGGTTGAATTTAATGAAATTTGCTGAGTCTGGAGGGTTAGTTCAGAGTTCTTCCACTGTA
 TGTTTGAAGAGATGACCAAGCCAGAATATGGAATGTTTCATGTATCCTGAAATGGTTCTGCATGTGGTT
 TCCTGCCAAGCCTAAACCTGAGAAGAAAAGATATTTCTCTTTGGAATGCTGTGTGGACTCTCCTTATTC
 AATTTAAATGTTGCTAACCTTCTTTCCACTGGCTCTGTATAAAAAACTTCTGGACCAAAAGCCATCAT
 TGGAAGATTTAAAAGAACTCAGTCTCGGTTGGGAAGAGTTTGAAGAAGTTCTAGATGATGCTGCTGA
 TGACATTTGGAGATGCGCTCTGCATACGCTTTTCTATACACTGGGACCAAAATGATGTTGACTTAATTCCA
 AATGGGATCTCCATACCTGTGGACCAACCAACAAGAGAGACTATGTTTCTAAGTATATTGATTACATTT
 TCAACGTCTCTGTAAAAGCAGTTTATGAGGAATTTAGAGAGGATTTTATAGAGTCTGTGAGAAGGAGAT
 ACTTAGACATTTCTACCTGAAGAACTAATGACAGCAATCATTGGAAATACTGATTATGACTGGAACAG
 TTTGAACAGAATTCAAAGTATGAGCAAGGATACAAAAATCACATCCTACTATACAGTTGTTTTGGAAGG
 CTTTCCACAAACTAACCTTGGATGAAAAGAAAAATTCCTCTTTTCTTACAGGACGTGATAGGCTGCA
 TGCAAGAGGCATACAGAAAATGGAATAGTATTTCCGCTGTCTGAACTTTCAGTGAAAGAGATCACCCA
 ACATCAATAAATTGTGATAATTTCTCTCCCTCCCTAAGTATTCTACAATGGAAGAATGGAGGAAGCAC
 TTCAAGTAGCCATCAACAACAACAGAGGATTTGTCTACCCATGCTCACACAGTCA

ACGCGTACGCGGCCGCTCGAGCAGAACTCATCTCAGAAGAGGATCTGGCAGCAAATGATATCCTGGATT
 ACAAGGATGACGACGATAAGGTTTAA

Protein Sequence:

>RC218907 representing NM_017912
 Red=Cloning site Green=Tags(s)

MYFCWGDADRELQRRRTAGSPGAELLQAASGERHSLLLL TNHRVLSGDNRSRQLGRRGAQRGELPEPIQ
 ALETILVDLVSCGKEHSLAVCHKGRVFAWGAGSEGQLGIGEFKEISFPPKIMTLNDIKIIVQSCGHYHS
 LALSKDSQVFSWGNKSHGQLGLGKEFPSPQRVRSLEGIPLAQVAAGGAHSFALSLCGTSFGWGSNSA
 GQLALSGRNVPVQSNKPLSVGALKNLGVVYISCGDAHTAVLTQDGKVFTFGDNRSRQLGYSPTPEKRGQ
 LVERIDGLVSIIDCGSYHTLAYVHTTGQVVVSGHGPSDTSKPTHPEALTENFDISCLISAEDFVDVQVKH
 IFAGTYANFVTHQDTSSTRAPGKTLPEISRISQSMAEKWIIVKRRSTEHEMAKSEIRMIFFSPPACLAS
 FLKKRGTGETTSIDVDLEMARDTFKFLTKKEWISSMITTLEDDLLRALPCHSPHQEALSVFLLLPECPV
 MHDKNWKNLVVPFAKAVCEMSKQSLQVLKCCWAFLESSLNPLIQMLKAAIISQLLHQTKTEQDHCNVK
 ALLGMMKELHKVKNKANCRLPENTFNINELSNLLNFYIDRGRQLFRDNHLIPAETPSPVIFSDFPFIFNSL
 SKIKLLQADSHIKMQMSEKKAYMLMHETILQKKDEFPPSPRILRVRRSRLVKDALRQLSQAEATDFCKV
 LVVEFINEICPESGGVSSEFFHCMFEEMTKPEYGMFMYPEMGSWMWPAKPKPEKKRYFLFGMLCGLSLF
 NLNVANLPPFLALYKLLDQKPSLEDLDELSPRLGKSLQEVLDAAADDIGDALCIRFSIHWQNDVDLIP
 NGISIPVDQTNKRDYVSKYIDYIFNVSVKAVYEEFQRFYRVCEKEILRHFYPEELMTAIIINTDYDQWKQ
 FEQNSKYEQGYQKSHPTIQLFWKAFHKLTLDEKKKFLFFLTGRDRLHARGIQKMEIVFRCPETFSERDHP
 TSITCHNILSLPKYSTMERMEELQVAINNRRGFVSPMLTQS

TRTRPLEQKLISEEDLAANDILDYKDDDDKV

Chromatograms:

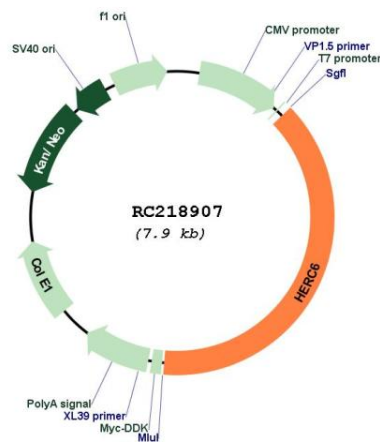
https://cdn.origene.com/chromatograms/mg3056_h07.zip

Restriction Sites:

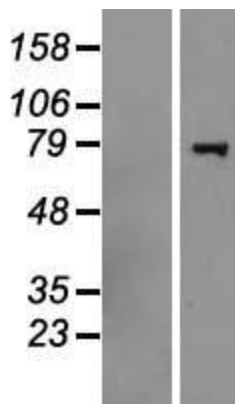
Sgfl-MluI

Locus ID:	55008
UniProt ID:	Q8IVU3
Cytogenetics:	4q22.1
Domains:	HECT
Protein Families:	Druggable Genome
MW:	114.9 kDa
Gene Summary:	HERC6 belongs to the HERC family of ubiquitin ligases, all of which contain a HECT domain and at least 1 RCC1 (MIM 179710)-like domain (RLD). The 350-amino acid HECT domain is predicted to catalyze the formation of a thioester with ubiquitin before transferring it to a substrate, and the RLD is predicted to act as a guanine nucleotide exchange factor for small G proteins (Hochrainer et al., 2005 [PubMed 15676274]).[supplied by OMIM, Mar 2008]

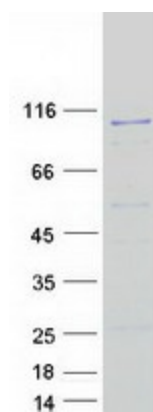
Product images:



Circular map for RC218907



Western blot validation of overexpression lysate (Cat# [LY413458]) using anti-DDK antibody (Cat# [TA50011-100]). Left: Cell lysates from untransfected HEK293T cells; Right: Cell lysates from HEK293T cells transfected with RC218907 using transfection reagent MegaTran 2.0 (Cat# [TT210002]).



Coomassie blue staining of purified HERC6 protein (Cat# [TP318907]). The protein was produced from HEK293T cells transfected with HERC6 cDNA clone (Cat# RC218907) using MegaTran 2.0 (Cat# [TT210002]).