

## Product datasheet for RC218904

### ANKRD10 (NM\_017664) Human Tagged ORF Clone

#### Product data:

Product Type:	Expression Plasmids
Product Name:	ANKRD10 (NM_017664) Human Tagged ORF Clone
Tag:	Myc-DDK
Symbol:	ANKRD10
Mammalian Cell Selection:	Neomycin
Vector:	pCMV6-Entry (PS100001)
E. coli Selection:	Kanamycin (25 ug/mL)
ORF Nucleotide Sequence:	>RC218904 representing NM_017664 Red=Cloning site Blue=ORF Green=Tags(s)

TTTTGTAATACGACTCACTATAGGGCGGCCGGGAATTCGTCGACTGGATCCGGTACCGAGGAGATCTGCCGCCCGATCGCC

ATGTCGGCGGGGAGCGGGCGGGCGGTAGAGGGGGCTTCTCCAGCGAGGAGCTGCTCTCGCTCCGTT  
TCCCGCTGCACCGCGCCTGCCCGACGGGGACCTGGCCACGCTCTGCTCGCTGCTGCAGCAGACACCCCA  
CGCCACCTGGCCTCTGAGGACTCCTTCTATGGCTGGACGCCCGTGCCTGGCCCGGCATTTTCGGCAAG  
TTGGAGTGTCTAGTGCAGTTGGTGAGAGCGGGAGCCACACTCAACGTCTCCACCACACGGTACGCGCAGA  
CGCCAGCCACATTGCAGCCTTTGGGGACATCCTCAGTGCCTGGTCTGGCTGATTCAAGCAGGAGCCAA  
CATTAAACAAACCGGATTGTGAGGGTGAACTCCCATTCACAAGGCAGCTCGCTCTGGGAGCCTAGAATGC  
ATCAGTGCCCTTGTGGCAATGGGGCTCACGTCGACCTGAGAAATGCCAGTGGCCTGACAGCAGCAGACA  
TTGCACAAACCCAGGTTTCCAAGAGTGTGCCAGTTTCTCTTGAACCTCCAGAATTGTCATCTGAACCA  
TTTCTATAACAATGGCATCTTAAATGGGGTGCATCAGAATGATTTTCTAATCATATTAGTGTGGGAACA  
AATCGAAAGAGATGCTTGAAGACTCAGAAGACTTTGGAGTAAAGAAAGCTAGAAGTGAAGCTCAAAGCT  
TGGATTCTGCCGTGCCACTCACGAATGGCGACACAGAAGACGATGCTGACAAAATGCACGTTGATAGGGA  
GTTTGCTGTTGTAAACAGATATGAAAAACAGTAGCTCCGTATCGAATACATTGACAAATGGATGTGCATC  
AATGGACATTTGGACTTCCCCTCCAGACCCCGCTCAGTGGGATGAAAGCAGGAATGGCCAGTGCCTTGA  
CAGGAACTAACGGAATTAGCAGTGGATTAGCCCCAGGACAGCCGTTTCCGAGTAGCCAGGTTTCTCTCTG  
CATTAGTGGGACTGAGGAGCCAGAGAAGACCCTGAGAGCTAACCTGAGTTGTGCGGTTCTCTGCACCTG  
AACGGGAGTCCAAGTAGCTGCATAGCCAGTAGGCCTTCTGGGTGGAAGACATTGGGGATAACCTGTACT  
ATGGACTACCACGGGTTTGGGGACACTGCTGAAAGCATCCCAGAACTGAACAGTGTGGTGCAGCATTC  
CAAGTCCGTGAAGGTGCAGGAGCGGTACGACAGTGCCGTGCTGGGCACCATGCACCTGCACCACGGCTCC

ACGCGTACGCGGGCGCTCGAGCAGAACTCATCTCAGAAGAGGATCTGGCAGCAAATGATATCTGGATT  
ACAAGGATGACGACGATAAGGTTTAA



[View online »](#)

**Protein Sequence:** >RC218904 representing NM\_017664  
Red=Cloning site Green=Tags(s)

MSAAGAGAGVEAGFSSEELLSLRFPLHRACRDGLATLCSLLQQTPHAHLASEDSFYGWTPVHWAHFGK  
 LECLVQLVRAGATLNVSTTRYAQTPAHIAAFGGHPQCLVWLIQAGANINKPDCEGETPIHKAARSGSLEC  
 ISALVANGAHVDLRNASGLTAADIAQTQGFQECAQFLLNLQNCHLNHFYNNGILNGGHQNVFPNHSVGT  
 NRKRCLDESEDFGVKKARTEAQSLSAVPLTNGDTEDDADKMHVDREFAVVTDKMNSSSVSNTLTNGCVI  
 NGHLDFFSTTPLSGMESRNGQCLTGTNGISSGLAPGQPPSSQGS LCISGTEEPEKTLRANPEL CGSLHL  
 NGSPSSCIASRPSWVEDIGDNL YYGHYHGFGDTAESIPELNSVVEHSKSVKVQERYDSAVLGTMHLHHGS

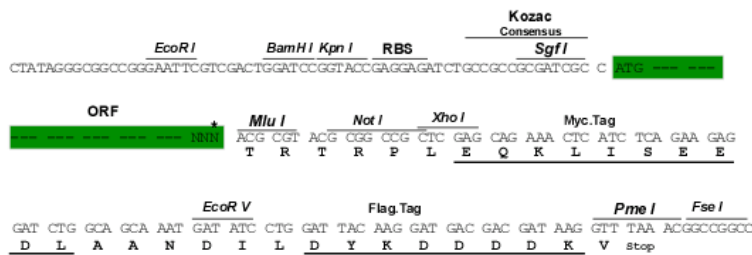
TRTRPLEQKLISEEDLAANDILDYKDDDDKV

**Chromatograms:** [https://cdn.origene.com/chromatograms/mk6485\\_f07.zip](https://cdn.origene.com/chromatograms/mk6485_f07.zip)

**Restriction Sites:** Sgfl-MluI

**Cloning Scheme:**

Cloning sites used for ORF Shuttling:



\* The last codon before the Stop codon of the ORF

**ACCN:** NM\_017664

**ORF Size:** 1260 bp

**OTI Disclaimer:** The molecular sequence of this clone aligns with the gene accession number as a point of reference only. However, individual transcript sequences of the same gene can differ through naturally occurring variations (e.g. polymorphisms), each with its own valid existence. This clone is substantially in agreement with the reference, but a complete review of all prevailing variants is recommended prior to use. [More info](#)

**OTI Annotation:** This clone was engineered to express the complete ORF with an expression tag. Expression varies depending on the nature of the gene.

**Components:** The ORF clone is ion-exchange column purified and shipped in a 2D barcoded Matrix tube containing 10ug of transfection-ready, dried plasmid DNA (reconstitute with 100 ul of water).

**Reconstitution Method:**

1. Centrifuge at 5,000xg for 5min.
2. Carefully open the tube and add 100ul of sterile water to dissolve the DNA.
3. Close the tube and incubate for 10 minutes at room temperature.
4. Briefly vortex the tube and then do a quick spin (less than 5000xg) to concentrate the liquid at the bottom.
5. Store the suspended plasmid at -20°C. The DNA is stable for at least one year from date of shipping when stored at -20°C.

**RefSeq:** [NM\\_017664.4](#)

**RefSeq Size:** 2495 bp

**RefSeq ORF:** 1263 bp

**Locus ID:** 55608

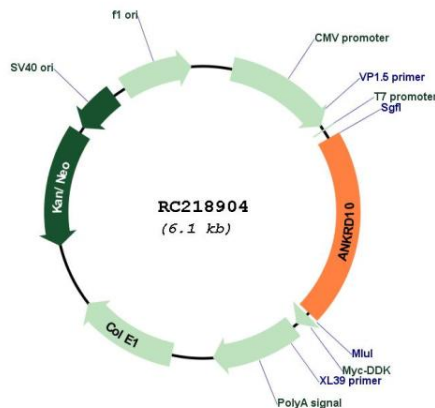
**UniProt ID:** [Q9NXR5](#)

**Cytogenetics:** 13q34

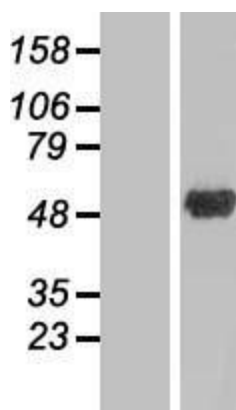
**Domains:** ANK

**MW:** 44.6 kDa

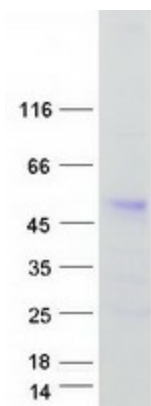
**Product images:**



Circular map for RC218904



Western blot validation of overexpression lysate (Cat# [LY413661]) using anti-DDK antibody (Cat# [TA50011-100]). Left: Cell lysates from untransfected HEK293T cells; Right: Cell lysates from HEK293T cells transfected with RC218904 using transfection reagent MegaTran 2.0 (Cat# [TT210002]).



Coomassie blue staining of purified ANKRD10 protein (Cat# [TP318904]). The protein was produced from HEK293T cells transfected with ANKRD10 cDNA clone (Cat# RC218904) using MegaTran 2.0 (Cat# [TT210002]).