

Product datasheet for **RC218903**

EGFL7 (NM_201446) Human Tagged ORF Clone

Product data:

Product Type:	Expression Plasmids
Product Name:	EGFL7 (NM_201446) Human Tagged ORF Clone
Tag:	Myc-DDK
Symbol:	EGFL7
Synonyms:	NEU1; VE-STATIN; ZNEU1
Mammalian Cell Selection:	Neomycin
Vector:	pCMV6-Entry (PS100001)
E. coli Selection:	Kanamycin (25 ug/mL)
ORF Nucleotide Sequence:	>RC218903 ORF sequence Red=Cloning site Blue=ORF Green=Tags(s)

TTTTGTAATACGACTCACTATAGGGCGGCCGGAATTCGTCGACTGGATCCGGTACCGAGGAGATCTGCC
GCC**CGATCGCC**

ATGAGGGGCTCTCAGGAGGTGCTGCTGATGTGGCTTCTGGTGTGGCAGTGGGCGGCACAGAGCACGCCT
ACCGGCCCGCCGTAGGGTGTGTGCTGTCCGGCTCACGGGACCCTGTCTCCGAGTCGTTCTGTCAGCG
TGTGTACCAGCCCTTCTCACCACCTGCGACGGGCACCGGCCTGCAGCACCTACCGAACCATCTATAGG
ACCGCCTACCGCCGACCCCTGGGCTGGCCCTGCCAGGCCTCGTACGCGTGTGCCCGGCTGGAAGA
GGACCAGCGGGCTTCTGGGGCTGTGGAGCAGCAATATGCCAGCCGCCATGCCGGAACGGAGGGAGCTG
TGTCCAGCCTGGCCGCTGCCGCTGCCCTGCAGGATGGCGGGTGACACTTGCCAGTCAGATGTGGATGAA
TGCAGTGTAGGAGGGGGCTGTCCCCAGCGCTGCATCAACACCGCCGCGAGTTACTGGTGCCAGTGTT
GGGAGGGGCACAGCCTGTCTGCAGACGGTACACTCTGTGTGCCCAAGGGAGGGCCCCCAGGGTGGCCCC
CAACCCGACAGGAGTGGACAGTGAATGAAGGAAGAAGTGCAGAGGCTGCAGTCCAGGGTGGACCTGCTG
GAGGAGAAGTGCAGTGGTGTGGCCCCACTGCACAGCCTGGCCTCGCAGGCACTGGAGCATGGGCTCC
CGGACCCCGCAGCCTCCTGGTGCATCCTCCAGCAGCTCGGCCGCATCGACTCCCTGAGCGAGCAGAT
TTCTTCTGGAGGAGCAGCTGGGTCTGCTCCTGCAAGAAAGACTCG

AG**CGGACCG**ACGCGTACGCGCCGCTCGAGCAGAAACTCATCTCAGAAGAGGATCTGGCAGCAAATGATATCC
TGGATTACAAGGATGACGACGATAAGGTTTAA



[View online »](#)

Protein Sequence: >RC218903 protein sequence
Red=Cloning site Green=Tags(s)

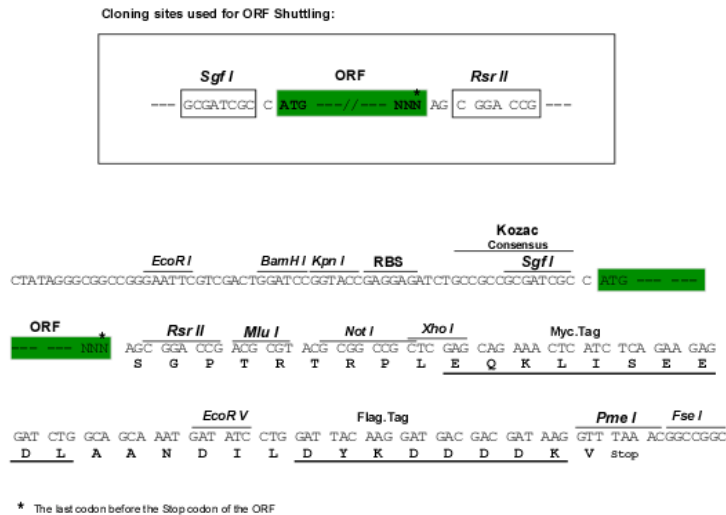
MRGSQEVLLMULLVLA VGGTEHAYRPGRRVCAVRAHGDPVSESFVQRVYQPFLTTCDGHRACSTYRTIYR
 TAYRRSPGLAPARPRYACCPGWKRTSGLPGACGAAICQPPCRNGGSCVQPGRCRCPAGWRGDTQSDVDE
 CSARRGGCPQRCINTAGSYWCQCWEGHSLADGTL CVPKGGPPRVAPNPTGVDSAMKEEVQRLQSRVDLL
 EEKQLVLAPLHSLASQALEHGLPDPGSLLVHSFQQLGRIDSLSEQISFLEEQLGSCSCKKDS

SGPTRTRPLEQKLI SEEDLAANDILDYKDDDDKV

Chromatograms: https://cdn.origene.com/chromatograms/mk6189_e04.zip

Restriction Sites: SgfI-RsrII

Cloning Scheme:



ACCN: NM_201446

ORF Size: 819 bp

OTI Disclaimer: The molecular sequence of this clone aligns with the gene accession number as a point of reference only. However, individual transcript sequences of the same gene can differ through naturally occurring variations (e.g. polymorphisms), each with its own valid existence. This clone is substantially in agreement with the reference, but a complete review of all prevailing variants is recommended prior to use. [More info](#)

OTI Annotation: This clone was engineered to express the complete ORF with an expression tag. Expression varies depending on the nature of the gene.

Components: The ORF clone is ion-exchange column purified and shipped in a 2D barcoded Matrix tube containing 10ug of transfection-ready, dried plasmid DNA (reconstitute with 100 ul of water).

Reconstitution Method:

1. Centrifuge at 5,000xg for 5min.
2. Carefully open the tube and add 100ul of sterile water to dissolve the DNA.
3. Close the tube and incubate for 10 minutes at room temperature.
4. Briefly vortex the tube and then do a quick spin (less than 5000xg) to concentrate the liquid at the bottom.
5. Store the suspended plasmid at -20°C. The DNA is stable for at least one year from date of shipping when stored at -20°C.

RefSeq: [NM_201446.3](#)

RefSeq Size: 1318 bp

RefSeq ORF: 822 bp

Locus ID: 51162

UniProt ID: [Q9UHF1](#)

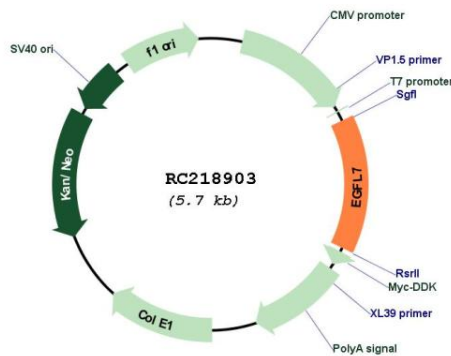
Cytogenetics: 9q34.3

Protein Families: Secreted Protein

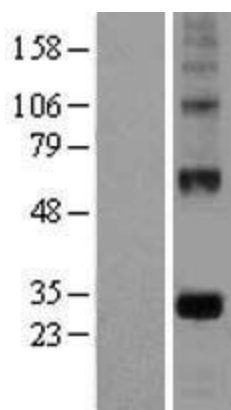
MW: 29.6 kDa

Gene Summary: This gene encodes a secreted endothelial cell protein that contains two epidermal growth factor-like domains. The encoded protein may play a role in regulating vasculogenesis. This protein may be involved in the growth and proliferation of tumor cells. Alternate splicing results in multiple transcript variants. [provided by RefSeq, Feb 2012]

Product images:



Circular map for RC218903



Western blot validation of overexpression lysate (Cat# [LY404428]) using anti-DDK antibody (Cat# [TA50011-100]). Left: Cell lysates from untransfected HEK293T cells; Right: Cell lysates from HEK293T cells transfected with RC218903 using transfection reagent MegaTran 2.0 (Cat# [TT210002]).