

Product datasheet for **RC218893**

SART2 (DSE) (NM_001080976) Human Tagged ORF Clone

Product data:

Product Type:	Expression Plasmids
Product Name:	SART2 (DSE) (NM_001080976) Human Tagged ORF Clone
Tag:	Myc-DDK
Symbol:	SART2
Synonyms:	DS-epi1; DSEP; DSEPI; EDSMC2; SART-2; SART2
Mammalian Cell Selection:	Neomycin
Vector:	pCMV6-Entry (PS100001)
E. coli Selection:	Kanamycin (25 ug/mL)



[View online »](#)

**ORF Nucleotide
Sequence:**

>RC218893 ORF sequence
 Red=Cloning site Blue=ORF Green=Tags(s)

TTTTGTAATACGACTCACTATAGGGCGGCCGGGAATTCGTCGACTGGATCCGGTACCGAGGAGATCTGCC
 GCC**CGGATCGCC**

ATGAGGACTCACACACGGGGGGCTCCAGTGTGTTTTTCATATATTTGCTTTGCTTTGTGTGCAGCCTACA
 TCACCGACGAGAACCAGAAAGTTATGATTCCCTTCACCAATGCCAATACGACAGCCATCCCATGCTGTA
 CTTCTCCAGGGCAGAAAGTGGCGGAGCTGCAGCTCAGGGCTGCCAGCTCGCACGAGCACATTGCAGCCCGC
 CTCACGGAGGCTGTGCACACGATGCTGTCCAGCCCTTGAATACCTCCCTCCCTGGGATCCCAAGGACT
 ACAGTGCCCGCTGGAATGAAATTTTTGAAACAACCTGGGTGCCTTGGCAATGTTCTGTGTGCTGTATCC
 TGAGAACATTGAAGCCCAGACATGGCCAAAGACTACATGGAGAGGATGGCAGCGCAGCCTAGTTGGTTG
 GTGAAAGATGCTCCTGGGATGAGGTCCCGCTTGCTCACTCCCTGGTGGTTTTGCCACTGCTTATGACT
 TCTTGTAACAACCTGAGCAAGACACAACAGGAGAAGTTTCTTGAAGTGATTGCCAATGCCTCAGGGTA
 TATGTATGAAACTTCATACAGGAGAGGATGGGGATTTCAATACCTGCACAATCATCAGCCCACCAACTGT
 ATGGCTTTGCTCACGGGAAGCCTAGTCCTGATGAATCAAGGATATCTTCAAGAAGCCTACTTATGGACCA
 AACAAAGTTCTGACCATCATGGAGAAATCTCTGGTCTTGCTCAGGGAGGTGACGGATGGCTCCCTCTATGA
 AGGAGTTGCGTATGGCAGCTACACCACTAGATCACTCTTCCAATACATGTTTCTCGTCCAGAGGCACTTC
 AACATCAACCACTTTGGCCATCCGTGGCTTAAACAACACTTTGCATTTATGTATAGAACCATCCTGCCAG
 GGTTTCAAAGGACTGTGGCTATTGCGGACTCAAATTACAACCTGGTTTTATGGTCCAGAAAGCCAATTAGT
 GTTCTTGATAAATTTGTCATGCGTAATGGCAGTGGTAAGTGGCTAGCTGACCAATCAGAAGGAACCGT
 GTGGTGGAAAGTCCAGGAACACCATCAAAGGGCAGCGCTGGTGCCTCTGCACACAGAAATTTCTCTGGT
 ATGATGGCAGCTTGAAATCGGTTCTCTCCAGACTTTGGCACCCCTACACTGCATTTATTTGAAGACTG
 GGGTGTGCTGACTTATGGAAGTGCCTACTCTGCAGAAATCAATAGATCTTTCCTTTCCTTCAAGTCTGGA
 AAAGTGGGGGACGTGCAATATATGACATTGTCCACAGAAACAAATACAAAGATTGGATCAAAGGATGGA
 GAAATTTAATGCAGGGCATGAACATCCTGATCAAACTCATTTACTTTTCTCCCAATGGTGTGCCTTT
 CATTACTGAGGCTCTGTACGGGCCAAAGTACACCTTCTTCAACAATGTTTTGATGTTTTCCCCAGCTGTG
 TCAAAGAGCTGCTTTCTCCCTGGTGGTTCAGGTCACAGAAGACTGCTCATCAAATGGTCTAAATACA
 AGCATGACCTGGCAGCTAGTTGTCAGGGGAGGGTGGTGCAGCAGAGGAGAAAAATGGGGTGGTTTTTAT
 CCGAGGAGAAGGTGTGGGAGCTATAACCCCACTCAACCTGAAGAATGTTAGAGGAATCTCATCCTC
 CTACATCCACAGCTGCTTCTCCTTGTAGACCAAAATACACCTGGGAGAGGAGTCCCTTGGAGACAGCAG
 CGAGCTTCTTCCATAATGTGGATGTTCTTTTGGAGAGACTGTGGTAGATGGTGTCCATGGGGCTTTCAT
 CAGGCAGAGAGATGGTCTCTATAAAATGTACTGGATGGACGATACTGGCTACAGCGAGAAAGCAACCTTT
 GCCTCAGTGACATATCCTCGGGGCTATCCCTACAACGGGACAACTATGTGAATGTCACCATGCACCTCC
 GAAGTCCCATCACCAGGGCAGCTTACCTTTCATAGGGCCATCTATAGATGTTAGAGCTTCACTGTCCA
 CGGAGACTCTCAGCAACTGGATGTGTTTCATAGCCACCAGCAAACATGCCTACGCCACATACCTGTGGACA
 GGTGAGGCCACAGGACAGTCTGCCTTTGCACAGGTCATTGCTGATCGTCACAAAATCTGTTTGACCGGA
 ATTCAGCCATCAAGAGCAGCATTGTCCCTGAGGTGAAGGACTATGCTGCTATTGTGGAACAGAACTTGCA
 GCATTTTAAACCAGTGTTCAGCTGCTGGAGAAGCAGATACTGTCCCAGTCCGGAACACAGCTAGCTTT
 AGGAAGACTGCTGAACGCCTGCTGAGATTTTCAGATAAGAGACAGACTGAGGAGGCCATTGACAGGATTT
 TTGCCATATCACAGCAACAGCAGCAGCAAGCAAGTCAAAGAAAAACCGAAGGGCAGGCAAACGCTATAA
 ATTTGTGGATGCTGTCCCTGATATTTTTGCACAGATTGAAGTCAATGAGAAAAAGATTAGACAGAAAGCT
 CAGATTTTGGCACAGAAAGAACTACCCATAGATGAAGTGAAGAAATGAAAGACCTTTTAGATTTTGCAG
 ATGTAACATACGAGAAACATAAAAAATGGGGCTTGATTAAGGCCGGTTGGACAGGCACGGATGGTGC
 AACTACACACAGCAGGGCCCATCACTGTCTGCTTCTATACCAGTTGTTCTGATTCTGAACATTGCT
 ATTTTCTTTGTCATGTTGCAATGCAACTGACTTATTTCCAGAGGGCCAGAGCCTACATGGCCAAAGAT
 GTCTTTATGCAGTCTTCTCATAGATAGCTGTATTTTATTATGGTGTACTCTTCTGTTCCCAATCACA
 GTGT

ACGCGTACGCGGCCGCTCGAGCAGAACTCATCTCAGAAGAGGATCTGGCAGCAAATGATATCCTGGATT
 ACAAGGATGACGACGATAAGGTTTAA

Protein Sequence: >RC218893 protein sequence
 Red=Cloning site Green=Tags(s)

MRTHTRGAPSVFFIYLLCFVSAYITDENPEVMIPFTNANYDHPMLYFSRAEVAELQLRAASSHEHIAAR
 L TEAVHTMLSSPLEYLPWPDPKDY SARWNEIFGNL GALAMFCVLYPENIEARDMAKDYMERMAA QPSWL
 VKDAPWDEVPLAHS L VGFATAYDFLYNYL SKTQEQKFLEVI ANASGYMYETS YRRGWGFQYLH NHQPTNC
 MALLTGS L VLMNQGYLQEAYLWTKQVLT IMEKS L VLLREVTDGSLYEGVAYG SYTTRSLFQYMF L VQRHF
 NINHFGHPWLKQHF AFMYRTILPGFQRTVAI ADSNYNWFYGPESQLVFLDKFV MRNNGSGNWLADQIR RNR
 VVEGPGTPSKGQRWCTLHTEFLWYDGS LKSVPPDFGTPTLHYFEDWGVV TYGSALPAE INRSFLSFKSG
 KLGGRAIYDIVHRNKYKDWIKGWRNFNAGHEHPDQNSFTFAPNGV PFI TEALYGPKYTF FNNVLMFSPA V
 SKSCFSPWVGQVTEDCSSKWSKYK HDLAASCQGRVVAEEKNGVVFIRGEGVGAYNPQLNLKNVQRNLIL
 LHPQLLLLVDQIHLGEESPLETAASFHNVDVPFEETVVDGVHGAFIRQRDGLYKMYWMDDTGYSEKATF
 ASVTYPRGYPYNGTNYVNVMTMLRSPITRAAYLFIGPSIDVQSFVHGDSSQLDVF IATSKHAYATYLTW
 GEATGQSAFAQVIADRHKILFDRNSAIKSSIVPEVKDYAAIVEQNLQHFKPVFQLLEKQILSRVRNTASF
 RKTAERLLRFSDKRQTEEAIDRIFAISQQQQQSKSKKNRRAGKRYKFVDAVPDIFAQIEVNEKKIRQKA
 QILAQKELPIDEDEEMKDLLDFADVTYEKHKNGLIKGRFGQARMVTTTHSRAPSL SASYTRLFLILNIA
 IFFVMLAMQLTYFQRAQSLHGQRCLYAVLLIDSCILLWLYSSCSQSQC

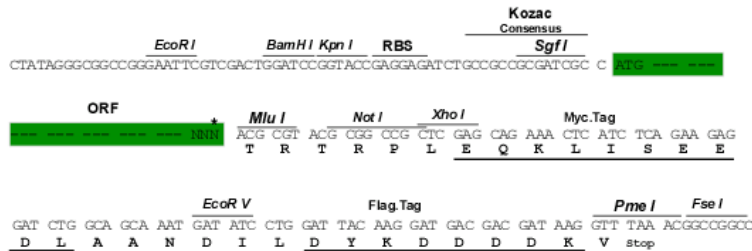
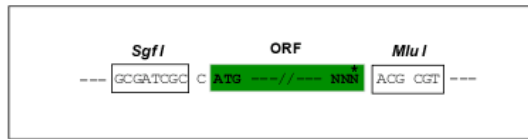
TRTRPLEQKLISEEDLAANDILDYKDDDDKV

Chromatograms: https://cdn.origene.com/chromatograms/mk6320_c03.zip

Restriction Sites: SgfI-MluI

Cloning Scheme:

Cloning sites used for ORF Shuttling:



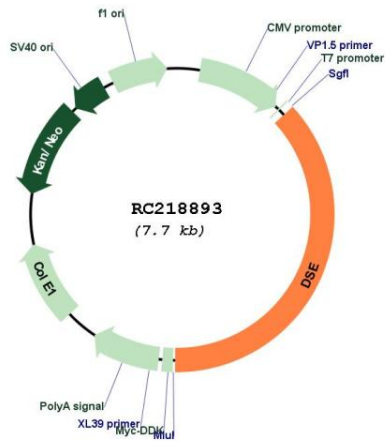
* The last codon before the Stop codon of the ORF

ACCN: NM_001080976

ORF Size: 2874 bp

OTI Disclaimer:	The molecular sequence of this clone aligns with the gene accession number as a point of reference only. However, individual transcript sequences of the same gene can differ through naturally occurring variations (e.g. polymorphisms), each with its own valid existence. This clone is substantially in agreement with the reference, but a complete review of all prevailing variants is recommended prior to use. More info
OTI Annotation:	This clone was engineered to express the complete ORF with an expression tag. Expression varies depending on the nature of the gene.
Components:	The ORF clone is ion-exchange column purified and shipped in a 2D barcoded Matrix tube containing 10ug of transfection-ready, dried plasmid DNA (reconstitute with 100 ul of water).
Reconstitution Method:	<ol style="list-style-type: none"> 1. Centrifuge at 5,000xg for 5min. 2. Carefully open the tube and add 100ul of sterile water to dissolve the DNA. 3. Close the tube and incubate for 10 minutes at room temperature. 4. Briefly vortex the tube and then do a quick spin (less than 5000xg) to concentrate the liquid at the bottom. 5. Store the suspended plasmid at -20°C. The DNA is stable for at least one year from date of shipping when stored at -20°C.
RefSeq:	NM_001080976.2 , NP_001074445.1
RefSeq Size:	4043 bp
RefSeq ORF:	2877 bp
Locus ID:	29940
UniProt ID:	Q9UL01
Cytogenetics:	6q22.1
Protein Families:	Transmembrane
Protein Pathways:	Chondroitin sulfate biosynthesis
MW:	109.8 kDa
Gene Summary:	The protein encoded by this gene is a tumor-rejection antigen. It is localized to the endoplasmic reticulum and functions to convert D-glucuronic acid to L-iduronic acid during the biosynthesis of dermatan sulfate. This antigen possesses tumor epitopes capable of inducing HLA-A24-restricted and tumor-specific cytotoxic T lymphocytes in cancer patients and may be useful for specific immunotherapy. Mutations in this gene cause inmusculocontractural Ehlers-Danlos syndrome. Alternative splicing results in multiple transcript variants. A related pseudogene has been identified on chromosome 9, and a paralogous gene exists on chromosome 18. [provided by RefSeq, Apr 2016]

Product images:



Circular map for RC218893