

Product datasheet for **RC218884**

Transportin 1 (TNPO1) (NM_002270) Human Tagged ORF Clone

Product data:

Product Type:	Expression Plasmids
Product Name:	Transportin 1 (TNPO1) (NM_002270) Human Tagged ORF Clone
Tag:	Myc-DDK
Symbol:	Transportin 1
Synonyms:	IPO2; KPNB2; MIP; MIP1; TRN
Mammalian Cell Selection:	Neomycin
Vector:	pCMV6-Entry (PS100001)
E. coli Selection:	Kanamycin (25 ug/mL)



[View online »](#)

ORF Nucleotide Sequence:

>RC218884 representing NM_002270
 Red=Cloning site Blue=ORF Green=Tags(s)

TTTTGTAATACGACTCACTATAGGGCGGCCGGAATTCGTCGACTGGATCCGGTACCGAGGAGATCTGCC
 GCC**GCGATCGCC**

ATGGTGTGGGACCGCAAACCAAGATGGAGTATGAGTGGAAACCTGACGAGCAAGGGCTTCAGAAATCC
 TGCAGCTGTTGAAGGAGTCCCAGTCCCCAGACACCACCATCCAGAGAACCGTGCAACAAAACTGGAACA
 ACTTAATCAGTATCCAGACTTTAACAACTACTTGATTTTTGTTCTTACAAAATTAATACTGAAGATGAA
 CCCACAAGATCATTGAGTGGTCTTATCTTGAAGAATAATGTGAAAGCACACTTTCAGAACTCCCAAATG
 GTGTAACAGACTTTATTAAGAGTGAATGTTAAATAATATTGGTGACTCCTCTCCTCTGATTAGAGCCAC
 TGTTGGTATTTTATCACAATAAGCCTCAAGGAGAATTGCAGAATTGGCCTGACCTTTACAAAA
 CTCTGTAGCCTGTTGGATTCTGAAGATTATAACCTGTGAGGGAGCATTGGTGCCCTTCAGAAGATT
 GTGAAGATTCTGCTGAGATTTAGACAGTGATGTTTTAGATCGTCTCTCAACATCATGATCCCAAATT
 TTTACAGTCTTCAAGCATAGTAGTCCAAAAATAAGGTCTCACGCTGTTGCATGTGTCAATCAGTTTATC
 ATCAGTAGGACTCAAGCTCTAATGTTGCACATTGATTCTTTTATTGAGAATCTCTTTCATTAGCTGGTG
 ATGAAGAACCAGAGGTACGGAATAATGTGTGCCGAGCACTTGTGATGTTGCTCGAAGTTCGAATGGATCG
 CCTGCTTCTCACATGCATAATATAGTTGAGTACATGCTACAGAGGACTCAAGATCAAGATGAAAATGTG
 GCTTTAGAAGCCTGTGAATTTGGCTAACTTTAGCTGAACAGCCAATATGCAAAGATGACTCGTAAGGC
 ATCTTCTAAGTTGATTCCTGTGTTAGTGAATGGCATGAAGTACTCAGACATAGATATTATCCTACTTAA
 GGGTGTGTTGAAGAAGACGAAACGATTCTGTAGTGAACAGGATACGCGCCACGTTTTACCCGATCG
 AGGACGGTGGCTCAGCAGCATGATGAAGATGGAATTGAAGAGGAAGATGATGATGATGAAATGATG
 ATGATGATAACAATTTCTGACTGGAATCTAAGAAAATGTTCTGCTGCCCTGGATGTTCTTCAAAATGT
 GTATCGTGATGAAGTCTGCCACATATTTGGCCCTTTTGAAGAATTACTTTTTCATCATGAATGGGTT
 GTTAAAGAATCAGGCATTTTGGTTTTAGAGCAATTGCTGAAGGTTGCATGCAGGCATGATTCCATACT
 TGCTGAGCTTATCCTCACCTTATTCAGTGCCTCTGTGATAAAAAGGCTCTTGTGCGTTCATAACATG
 CTGGACTCTTAGCCGCTATGCACACTGGTGGTGCAGCCAGCCGACAGCAGTACCTGAAGCCATTAATG
 ACAGAATTGCTAAAGCGCATCCTGGACAGCAACAAGAGAGTACAAGAAGTGCCTGCAGTGCCTTTGCTA
 CCCTAGAAGAGGAGGCTGTACAGAACTGTTCCCTTACCTTGCTATATACTTGATACCTGGTCTTTGCT
 ATTTAGTAAATACCAGCATAAGAACCTGCTCATTCTTTACGATGCCATAGGAACATTAGCAGATTCAGTA
 GGACATCATTTAAACAACCCAGAATATATTCAGATGCTAATGCCTCCACTGATCCAGAAATGGAACATGT
 TAAAGGATGAAGATAAAGATCTCTTCCCTTACTTGTAGTGCCTATCTTCAGTTGCCACAGCACTGCAGTC
 TGGATTCCTCCGTAAGTGTGAACCTGTGTATCAGCGTTGTGTAACCTAGTACAGAAGACTCTTGACAAA
 GCCATGCTAAACAATGCTCAACCAGATCAATATGAAGCTCCAGATAAAGATTTTATGATAGTGGCTCTTG
 ATTTACTGAGTGGCTGGCTGAAGGACTTGGAGGCAACATTGAACAGCTGGTAGCCCGAAGTAACATCCT
 GACACTAATGTATCAGTGCATGCAGGATAAAATGCCAGAAGTTCGACAGAGTCTTTTGCCTGTTAGGT
 GACCTCACAAAAGCTTGTCTTTCAGCATGTTAAGCCTTGTATAGCTGATTTTCATGCCAATATTGGGAACCA
 ACCTAAATCCAGAATTCATTTTCAGTCTGCAACAATGCCACATGGGCAATTGGAGAAATCTCCATTCAAAT
 GGGTATAGAGATGCAGCCTTATATTCCTATGGTGTGCACCAGCTTGTAGAAATCATTAAACAGACCCAAC
 ACACCAAAGACGTTGTTAGAGAATACAGCAATAACAATTGGTCGCTTGGTTACGTTTGTCTCAAGAGG
 TGGCCCCATGCTACAGCAGTTTATAAGACCCTGGTGCACCTCTCTGAGAAAACATAAGAGACAATGAGGA
 AAAGGATTCAGCATTCCGTGGAATTTGTACCATGATCAGTGTGAATCCCAGTGGCGTAATCCAAGATTTT
 ATATTTTTTTGTGATGCCGTTGCATCATGGATTAACCCAAAAGATGATCTCAGAGACATGTTCTGTAAAGA
 TCCTTCATGGATTTAAAAATCAAGTTGGCGATGAAAATGGAGGCGTTTCTCTGACCAGTTTCTCTTCC
 CTTAAAGAGCGTCTTGACGCTTTTTATGGTGTT

ACGCGTACGCGGCCGCTCGAGCAGAACTCATCTCAGAAGAGGATCTGGCAGCAAATGATATCCTGGATT
 ACAAGGATGACGACGATAAGGTTTAA

Protein Sequence: >RC218884 representing NM_002270
 Red=Cloning site Green=Tags(s)

```

MVWDRQTKMEYEWKPDEQGLQQILQLLKESQSPDTTIQRVTQQKLEQLNQYPDFNNYLIFVLTKLSEDE
PTRSL SGL I L K N N V K A H F Q N F P N G V T D F I K S E C L N N I G D S S P L I R A T V G I L I T T I A S K G E L Q N W P D L L P K
L C S L L D S E D Y N T C E G A F G A L Q K I C E D S A E I L D S D V L D R P L N I M I P K F L Q F F K H S S P K I R S H A V A C V N Q F I
I S R T Q A L M L H I D S F I E N L F A L A G D E E P E V R K N V C R A L V M L L E V R M D R L L P H M H N I V E Y M L Q R T Q D Q D E N V
A L E A C E F W L T L A E Q P I C K D V L V R H L P K L I P V L V N G M K Y S D I D I I L L K G D V E E D E T I P D S E Q D I R P R F H R S
R T V A Q Q H D E D G I E E E D D D D E I D D D D T I S D W N L R K C S A A A L D V L A N V Y R D E L L P H I L P L L K E L L F H H E W V
V K E S G I L V L G A I A E G C M Q G M I P Y L P E L I P H L I Q C L S D K K A L V R S I T C W T L S R Y A H W V S Q P P D T Y L K P L M
T E L L K R I L D S N K R V Q E A A C S A F A T L E E E A C T E L V P Y L A Y I L D T L V F A F S K Y Q H K N L L I L Y D A I G T L A D S V
G H H L N K P E Y I Q M L M P P L I Q K W N M L K D E D K D L F P L L E C L S S V A T A L Q S G F L P Y C E P V Y Q R C V N L V Q K T L A Q
A M L N N A Q P D Q Y E A P D K D F M I V A L D L L S G L A E G L G G N I E Q L V A R S N I L T L M Y Q C M Q D K M P E V R Q S S F A L L G
D L T K A C F Q H V K P C I A D F M P I L G T N L N P E F I S V C N N A T W A I G E I S I Q M G I E M Q P Y I P M V L H Q L V E I I N R P N
T P K T L L E N T A I T I G R L G V V C P Q E V A P M L Q Q F I R P W C T S L R N I R D N E E K D S A F R G I C T M I S V N P S G V I Q D F
I F F C D A V A S W I N P K D D L R D M F C K I L H G F K N Q V G D E N W R R F S D Q F L P L K E R L A A F Y G V
  
```

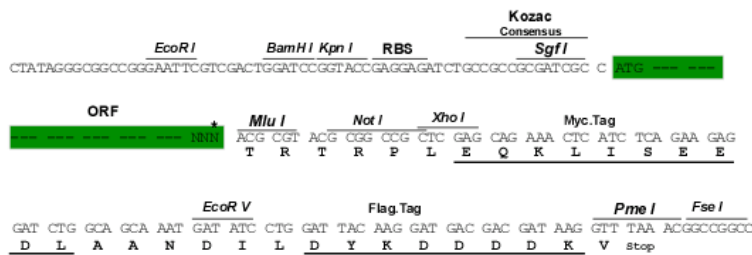
TRTRPLEQKLISEEDLAANDILDYKDDDDKV

Chromatograms: https://cdn.origene.com/chromatograms/mk8079_f05.zip

Restriction Sites: SgfI-MluI

Cloning Scheme:

Cloning sites used for ORF Shuttling:



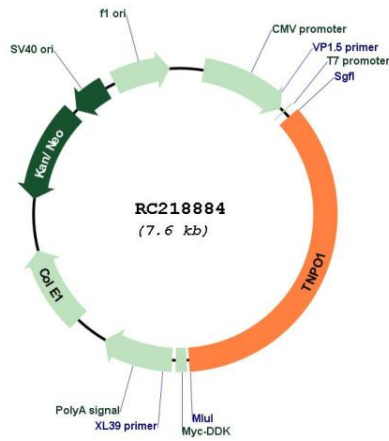
* The last codon before the Stop codon of the ORF

ACCN: NM_002270

ORF Size:	2694 bp
OTI Disclaimer:	<p>Due to the inherent nature of this plasmid, standard methods to replicate additional amounts of DNA in E. coli are highly likely to result in mutations and/or rearrangements. Therefore, OriGene does not guarantee the capability to replicate this plasmid DNA. Additional amounts of DNA can be purchased from OriGene with batch-specific, full-sequence verification at a reduced cost. Please contact our customer care team at custsupport@origene.com or by calling 301.340.3188 option 3 for pricing and delivery.</p> <p>The molecular sequence of this clone aligns with the gene accession number as a point of reference only. However, individual transcript sequences of the same gene can differ through naturally occurring variations (e.g. polymorphisms), each with its own valid existence. This clone is substantially in agreement with the reference, but a complete review of all prevailing variants is recommended prior to use. More info</p>
OTI Annotation:	This clone was engineered to express the complete ORF with an expression tag. Expression varies depending on the nature of the gene.
Components:	The ORF clone is ion-exchange column purified and shipped in a 2D barcoded Matrix tube containing 10ug of transfection-ready, dried plasmid DNA (reconstitute with 100 ul of water).
Reconstitution Method:	<ol style="list-style-type: none"> 1. Centrifuge at 5,000xg for 5min. 2. Carefully open the tube and add 100ul of sterile water to dissolve the DNA. 3. Close the tube and incubate for 10 minutes at room temperature. 4. Briefly vortex the tube and then do a quick spin (less than 5000xg) to concentrate the liquid at the bottom. 5. Store the suspended plasmid at -20°C. The DNA is stable for at least one year from date of shipping when stored at -20°C.
RefSeq:	NM_002270.4
RefSeq Size:	8559 bp
RefSeq ORF:	2697 bp
Locus ID:	3842
UniProt ID:	Q92973
Cytogenetics:	5q13.2
Domains:	Armadillo_seg, IBN_NT
Protein Families:	Druggable Genome
MW:	102.2 kDa

Gene Summary:

This gene encodes the beta subunit of the karyopherin receptor complex which interacts with nuclear localization signals to target nuclear proteins to the nucleus. The karyopherin receptor complex is a heterodimer of an alpha subunit which recognizes the nuclear localization signal and a beta subunit which docks the complex at nucleoporins. Alternate splicing of this gene results in several transcript variants encoding different proteins. [provided by RefSeq, Jun 2018]

Product images:


Circular map for RC218884