

## Product datasheet for RC218881

### LYPD5 (NM\_182573) Human Tagged ORF Clone

#### Product data:

**Product Type:** Expression Plasmids  
**Product Name:** LYPD5 (NM\_182573) Human Tagged ORF Clone  
**Tag:** Myc-DDK  
**Symbol:** LYPD5  
**Synonyms:** PRO4356  
**Mammalian Cell Selection:** Neomycin  
**Vector:** pCMV6-Entry (PS100001)  
**E. coli Selection:** Kanamycin (25 ug/mL)  
**ORF Nucleotide Sequence:** >RC218881 representing NM\_182573  
 Red=Cloning site Blue=ORF Green=Tags(s)

TTTTGTAATACGACTCACTATAGGGCGGCCGGAATTCGTCGACTGGATCCGGTACCGAGGAGATCTGCC  
 GCC**CGATCGCC**

ATGAAGCTGCCAGCATCTCCTGTCTCATGAGTGCTTTGAGGCTATCCTGTCTCTGGACACCGGGTATC  
 GCGCGCCGGTGACCCTGGTGCAGAAAGGGCTGCTGGACCGGGCCTCCTGCGGGCCAGACGCAATCGAACGC  
 GGACGCGCTGCCGCCAGACTACTCGGTGGTGCAGGCTGCACAACTGACAAATGCAACGCCACCTCATG  
 ACTCATGACGCCCTCCCAACCTGAGCCAAGCACCCGACCGCCGACGCTCAGCGCGCCGAGTGCTACG  
 CCTGTATCGGGTCCACCAGGATGACTGCGCTATCGGCAGTCCCGACGAGTCCAGTGTACCAGGACCA  
 GACCGCCTGCTTCCAGGGCAATGGCAGAATGACAGTTGGCAATTTCTCAGTCCCTGTGTACATCAGAACC  
 TGCCACCGGCCCTCCTGCACCACCGAGGGCACCACCAGCCCTGGACAGCCATCGACCTCCAGGGCTCCT  
 GCTGTGAGGGGTACCTCTGCAACAGGAAATCCATGACCCAGCCCTTACCAGTGTTCAGCCACCACCCC  
 TCCCCGAGCACTACAGGTCTGGCCCTGCTCCTCCAGTCTCCTGCTGGTGGGGCTCTCAGCA

**ACGCGT**ACGCGGCCGCTCGAGCAGAACTCATCTCAGAAGAGGATCTGGCAGCAATGATATCCTGGATT  
 ACAAGGATGACGACGATAAGGTTTAA

**Protein Sequence:** >RC218881 representing NM\_182573  
 Red=Cloning site Green=Tags(s)

MKLPISICPHECFEAILSLDTGYRAPVTLVRKGCWTGPPAGQTQSNADALPPDYSVVRGCTTDKCNALHM  
 THDALPNLSQAPDPPTLSGAECYACIGVHQDDCAIGRSRRVQCHQDQACFQNGRMTVGNFVSPVYIRT  
 CHRPSCTTEGTTSPWTAIDLQGSCEGYLCNRKSMTQPFTSASATTPRALQVLALLLPVLLLVGLSA

**TRTRPLEQKLI**SEEDLAANDILDYKDDDDKV



[View online »](#)

Chromatograms: [https://cdn.origene.com/chromatograms/mk6119\\_c12.zip](https://cdn.origene.com/chromatograms/mk6119_c12.zip)

Restriction Sites: SgfI-MluI

Cloning Scheme:



ACCN: NM\_182573

ORF Size: 624 bp

OTI Disclaimer: The molecular sequence of this clone aligns with the gene accession number as a point of reference only. However, individual transcript sequences of the same gene can differ through naturally occurring variations (e.g. polymorphisms), each with its own valid existence. This clone is substantially in agreement with the reference, but a complete review of all prevailing variants is recommended prior to use. [More info](#)

OTI Annotation: This clone was engineered to express the complete ORF with an expression tag. Expression varies depending on the nature of the gene.

Components: The ORF clone is ion-exchange column purified and shipped in a 2D barcoded Matrix tube containing 10ug of transfection-ready, dried plasmid DNA (reconstitute with 100 ul of water).

Reconstitution Method: 1. Centrifuge at 5,000xg for 5min.  
2. Carefully open the tube and add 100ul of sterile water to dissolve the DNA.  
3. Close the tube and incubate for 10 minutes at room temperature.  
4. Briefly vortex the tube and then do a quick spin (less than 5000xg) to concentrate the liquid at the bottom.  
5. Store the suspended plasmid at -20°C. The DNA is stable for at least one year from date of shipping when stored at -20°C.

RefSeq: [NM\\_182573.2](#)

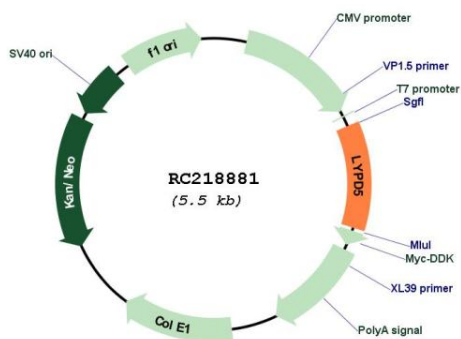
RefSeq Size: 2118 bp

RefSeq ORF: 627 bp

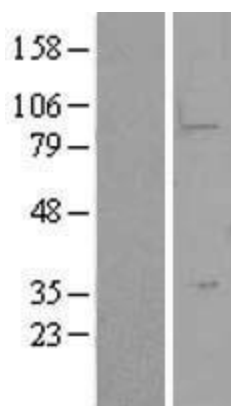
Locus ID: 284348

UniProt ID: [Q6UWN5](#)  
 Cytogenetics: 19q13.31  
 Protein Families: Druggable Genome  
 MW: 22.1 kDa

**Product images:**



Circular map for RC218881



Western blot validation of overexpression lysate (Cat# [LY403638]) using anti-DDK antibody (Cat# [TA50011-100]). Left: Cell lysates from untransfected HEK293T cells; Right: Cell lysates from HEK293T cells transfected with RC218881 using transfection reagent MegaTran 2.0 (Cat# [TT210002]).