

Product datasheet for **RC218869**

ASTE1 (NM_014065) Human Tagged ORF Clone

Product data:

Product Type:	Expression Plasmids
Product Name:	ASTE1 (NM_014065) Human Tagged ORF Clone
Tag:	Myc-DDK
Symbol:	ASTE1
Synonyms:	HT001
Mammalian Cell Selection:	Neomycin
Vector:	pCMV6-Entry (PS100001)
E. coli Selection:	Kanamycin (25 ug/mL)



[View online »](#)

**ORF Nucleotide
Sequence:**

>RC218869 ORF sequence
 Red=Cloning site Blue=ORF Green=Tags(s)

TTTTGTAATACGACTCACTATAGGGCGGCCGGAATTCGTCGACTGGATCCGGTACCGAGGAGATCTGCC
 GCC**CGGATCGCC**

ATGGGTATCCGAGGACTAATGAGTTTTGTGGAAGATCATAGTAATGAGTTCCTCACTGATTTGAAGTTGC
 GGGACACAAAAATTGTCATTGATGGTTATGCTCTTTCCACCGTCTTTGCTTCAGTTCAAAATTGGATCT
 CCGGTATGGAGGGGACTATGATTCTTTTCAGATGTTGTACAAAAATTCTTTGAATCACTGTTTGCTTGT
 AATATATGCCCATATGTTGATTAGATGGAGGATGTGACATTTCCAGATAAAAAGCTTACAACCTTTAAAGG
 ATAGAGCTAGAGAGAAGATCCAGATGGCCATTCCCTTTCTGTTGGTGGGAGTGGGTACGTATGTCCTT
 ACTCATCCGGGAAGTATTCATACAGTTTTGATCAAGCTGCGGGTGTGTTTTGTCCAGTGCCTTTTCAGAA
 GCAGATCGGGACATTATGACACTTGCTAACCATTTGGAATTGCCCTGTGTTATCATCAGATAGTGACTTTT
 GCATTTTTGACCTGAAAAGTGGTTTTGCCATTGAATAGCTTTTCAGTGGAGAAAATGAACACTATTAA
 GGGCACACAAAATATCCCTGCCAAATGCTTTTCCCTTGATGCATTCTGCCATCACTTCAGCAATATG
 AATAAAGCTCTACTACCTCTCTTTGCGGTGCTATGTGGAATGACCATGTTAATCTACCCATCATGGAGA
 CATTCTTAAGTAAAGCGCGTCTTCTCTTGAGGCTACCAGTCTAAAGGGAGGAGACACCACCGAATCCT
 GGGACTTCTGAATTGGTTGTCTCATTTTCCAACCCCTACCGAAGCACTAGATAATGTTCTGAAATACCTC
 CAAAAAAGGATCGAGAAAATGTTAAGGAACCTCTCTGCTGTTCCATGGAAGAATACCAACAGTCCCAGG
 TGAAGCTACAGGACTTCTCCAGTGTGGTACTTATGTCTGTCCAGATGCCTTGAATCTTGGTTTACCAGA
 ATGGGTATTAGTGGCTTAGCTAAAGGCCAGCTATCTCTTTTCATCAGTGATGCTTTGGTCTAAGACGG
 ACCATTCTCCACACAGGTGAAAACATGCAGCAACCAATGCCACAGAATATCTCAGCCCATCAGGC
 AAATCATCTATGGGCTTCTTTAAATGCCTCACCACATCTGGACAAGACATCCTGGAATGCATTGCCTCC
 TCAGCCTCTAGCTTTTCAGTGAAGTGGAAAGGATTAATAAAAAATATCAGAACCTCAATCATTGATGCAGTA
 GAACTGGCCAAGGATCATTCTGACTTAAGCAGATTGACTGAGCTCTCCTTGAGGAGGCGGCAGATGCTTC
 TGTTAGAAACCCTGAAGGTGAAACAGACCATTCTGGAGCCAATCCCTACTTCACTGAAGTTGCCATTGC
 TGTCAAGTGTACTGGTTGCAGCACACCGAGACCAAGCAAAGCTACATCATCTACAATCCTTACTGCTC
 ACAATGCTAGTGGGGCCCTTGATTGCCATAATCAACAGCCCTGGTAAGGAAGAGCTGCAGGAAGATGGTG
 CTAAGATGTTGTATGCAGAGTCCAAAGAGTGAAGGCGCAGACACGGCTGGGCACAAGACTGGACTTAGA
 CACAGCTCACATCTTCTGTCAGTGGCAGTCTGTCTCCAGATGGGGATGTATCTCAACCAGCTGCTGTCC
 ACTCCTCTCCAGAGCCAGACCTAACTCGACTGTACAGTGAAGCCTGGTGCACGGACTATGCCAGCAAC
 TGCTAGCATCGACCTCTGTAGAAAGTCTCCTGAGCATATGTCCTGAGGCTAAGCAACTTTATGAATATCT
 ATTC AATGCCACAAGGTCATATGCCCCCGTGAATATTCCTACCAAAAAGGTAGATCAAATTCAAAAAAA
 AAAAGGCAGAAGAAACAGAAATACCAGCTGTTCTAAGAACAGAGGGAGAACCCTGCACACACCAAGTGT
 GGTATGAGGGAACAACCGGTTTGGGTTGTTAATGGTTGAAAACCTAGAGGAACATAGTGAGGCCTCCAA
 CATTGAA

ACGCGTACGCGGGCCGCTCGAGCAGAAACTCATCTCAGAAGAGGATCTGGCAGCAATGATATCCTGGATT
 ACAAGGATGACGACGATAAGGTTTAA

Protein Sequence: >RC218869 protein sequence
Red=Cloning site Green=Tags(s)

```

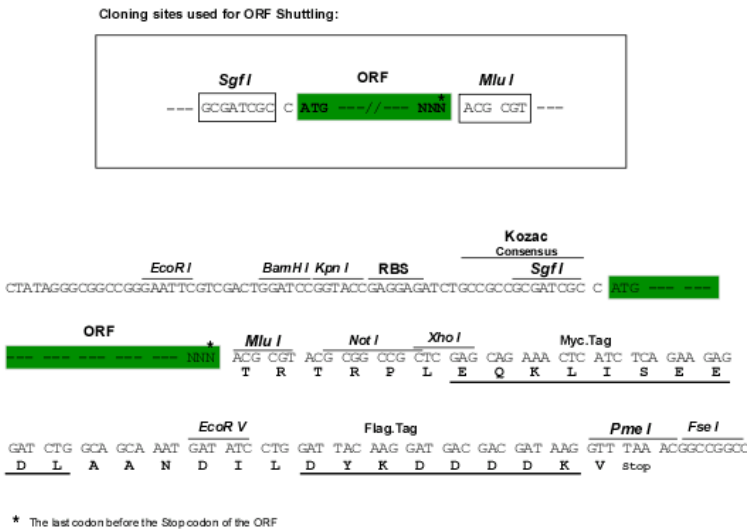
MGIRGLMSFVEDHSNEFFDCLKLRDTKIIVIDGYALFHRLCFSSNLDLRYGGDYDSFADVQKFFESL FAC
NICPYVVL DGGCDISDKL TTKDRAREKI QMAHSL SVGGSGYVCP LLIREVFIQVLIKLRVCFVQCFSE
ADRDIMTL ANHWNC PVLSSDSDFC IFDLKTGF CPLNSFQWRNMNT IKGTQNYIPAKCFLDAFCHHF SNM
NKALLPLFAVLCGNDHVNLPIMETF LSKARLPLGATSSKGRRHHRILGLLNWLSHFANPTEALDNVLKYL
PKKDRENVKELLCCSMEEYQSSQVKLQDF FQCGTYVCPDALNLGLPEWLVVALAKGQLSPFISDALV LRR
TILPTQVENMQQPNARI SQPIRQIIYGLLLNASPHLDKTSWNALPPQPLAFSEVERINKNIRTSIIDAV
ELAKDHS DL SRL TELSLRRRQMLLLET LKVKQTILEPIPTSLKLP IAVSCYWLQHTETKAKLHHLQSL LL
TMLVGPL IAI INSPGKEELQEDGAKMLYAEFQRVKAQTRLGTRLDLDTAHIFCQWQSC LQMGMYNQLLS
TPLPEPDLTRL YSGLVHGLCQQLLASTSVE SLLSICPEAKQLYEYLFNATRSYAPAEIFLPKGRSNSK
KRQKKQNTSCSKNRGRTTAHTKCWYEGNNRFGLLMVENLEEHSEASNIE
    
```

TRTRPLEQKLISEEDLAANDILDYKDDDDKV

Chromatograms: https://cdn.origene.com/chromatograms/mk6560_f09.zip

Restriction Sites: SgfI-MluI

Cloning Scheme:



ACCN: NM_014065

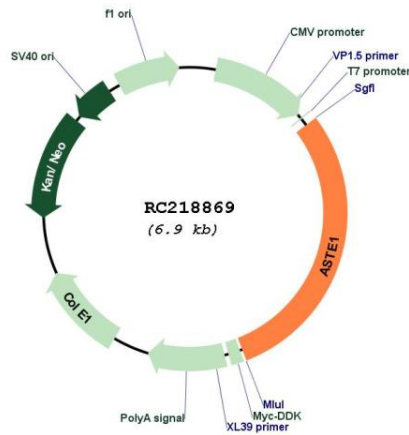
ORF Size: 2037 bp

OTI Disclaimer: The molecular sequence of this clone aligns with the gene accession number as a point of reference only. However, individual transcript sequences of the same gene can differ through naturally occurring variations (e.g. polymorphisms), each with its own valid existence. This clone is substantially in agreement with the reference, but a complete review of all prevailing variants is recommended prior to use. [More info](#)

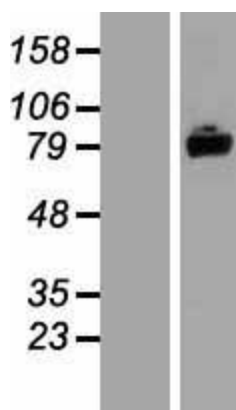
OTI Annotation: This clone was engineered to express the complete ORF with an expression tag. Expression varies depending on the nature of the gene.

- Components:** The ORF clone is ion-exchange column purified and shipped in a 2D barcoded Matrix tube containing 10ug of transfection-ready, dried plasmid DNA (reconstitute with 100 ul of water).
- Reconstitution Method:**
1. Centrifuge at 5,000xg for 5min.
 2. Carefully open the tube and add 100ul of sterile water to dissolve the DNA.
 3. Close the tube and incubate for 10 minutes at room temperature.
 4. Briefly vortex the tube and then do a quick spin (less than 5000xg) to concentrate the liquid at the bottom.
 5. Store the suspended plasmid at -20°C. The DNA is stable for at least one year from date of shipping when stored at -20°C.
- RefSeq:** [NM_014065.4](#)
- RefSeq Size:** 2736 bp
- RefSeq ORF:** 2040 bp
- Locus ID:** 28990
- UniProt ID:** [Q2TB18](#)
- Cytogenetics:** 3q22.1
- MW:** 77.1 kDa
- Gene Summary:** Possible role in EGF receptor signaling.[UniProtKB/Swiss-Prot Function]

Product images:



Circular map for RC218869



Western blot validation of overexpression lysate (Cat# [LY415490]) using anti-DDK antibody (Cat# [TA50011-100]). Left: Cell lysates from untransfected HEK293T cells; Right: Cell lysates from HEK293T cells transfected with RC218869 using transfection reagent MegaTran 2.0 (Cat# [TT210002]).



Coomassie blue staining of purified ASTE1 protein (Cat# [TP318869]). The protein was produced from HEK293T cells transfected with ASTE1 cDNA clone (Cat# RC218869) using MegaTran 2.0 (Cat# [TT210002]).