

Product datasheet for RC218866

SASH1 (NM_015278) Human Tagged ORF Clone

Product data:

Product Type:	Expression Plasmids
Product Name:	SASH1 (NM_015278) Human Tagged ORF Clone
Tag:	Myc-DDK
Symbol:	SASH1
Synonyms:	CAPOK; dj323M4.1; DUH1; SH3D6A
Mammalian Cell Selection:	Neomycin
Vector:	pCMV6-Entry (PS100001)
E. coli Selection:	Kanamycin (25 ug/mL)
ORF Nucleotide Sequence:	>RC218866 representing NM_015278 Red=Cloning site Blue=ORF Green=Tags(s)

TTTTGTAATACGACTCACTATAGGGCGGCCGGAATTCGTCGACTGGATCCGGTACCGAGGAGATCTGCCGCCGCGATCGCC

ATGGAGGACGCGGGAGCAGCTGGCCGGGGCCGGAGCCTGAGCCCGAGCCCGAGCCGGAGCCCGAGCCCG
CGCCGGAGCCGGAACCGGAGCCCAAGCCGGGTGCTGGCACATCCGAGGCGTTCTCCGACTCTGGACCGA
CGTGATGGGTATCCTGGACGGTTCCTGGGAAACATCGATGACCTGGCGCAGCAGTATGCAGATTATTAC
AACACCTGTTTCTCCGACGTGTGCGAGAGGATGGAGGAGCTGCGGAAACGCGGGTTCCAGGACCTGG
AAGTGGAGAAACCGATGCTAGCCACAGTCACTTCAGCTGCGGTCCAGATCGAAGAGTGGCTTGGCTT
CTGTAGCGCCGTGCAACCCAGAAAGTGGAAAGAAAGAACCTTTCATAAATCAAACCTCAGAAGACAGC
TCTGTAGGAAAAGGAGACTGGAAGAAGAAAATAAGTATTTCTGGCAGAACTCCGAAAGAACCAGAAAAG
GAATAATGAGACAGACTTCAAAAGGAGAAGACGTTGGTTATGTTGCCAGTGAAATAACGATGAGCGATGA
GGAGCGGATTCAGCTAATGATGATGGTCAAAGAAAAGATGATCACAATTGAGGAAGCACTTGCTAGGCTC
AAGGAATACGAGGCCAGCACCGGCAGTCGGCTGCCCTGGACCTGCTGACTGGCCAGATGGTCTTACC
CAACGTTTGTGGCTCATCAAATGCAATTCAGAGAACAATCGGATGATGAGACTGAGGAGTGGTGA
GTTTAAGAGGTTACACAAGCTGGTAACTCCACTCGCAGAGTCAAGAAAGAACTAATTAGGTGGAAGAA
ATGAAAAAACCCAGCACTGAAGGTGGGGAGGAGCACGTGTTTGAAGTTCGCCGTCCTGGATGAACGCT
CCGCCCTACTCTGGCGTGCACAAGAAGCCCTTTTCTTTGATGGCTCTCCTGAGAAACCTCCCGAAGA
TGACTCAGACTCTCTACCACGTCTCCATCCTCCAGCAGCCTGGACACCTGGGGGCTGGCCGGAAGTTG
GTCAAACCTTCAGCAAAGGAGAGAGCCGGGCTGATTAAGCCCCCAAGAAAGTGGGACATTCTTCT
CCTACCCAGAAGAAGAAAAGGCCAGAAAAGTGTCCCGCTCCCTACCGAGGGGAGATGAAGAAGGTCT
CGGGTCCCTAAGCCACGGGAGAACCTGCAGTTTGGAGGATTTGACTTGACGAATCGCTCTCTGCACGTT
GGCAGTAATAATTCTGACCAATGGGTAAGAAGGAGACTTTGTGTAACAAGAAGTCAATCAATCACCTA
CTGCCTCTCGCATCTCTTTGGGAAAAGGTGAAATCAGTGAAAGAGACGATGAGAAAGAGAATGTCTAA
AAAATACAGCAGCTCTGTCTCTGAGCAGGACTCGGCCTTGATGGAATGCCTGGCTCCCTCCGCTTCA



[View online >](#)

CAGCCCGACCCCGAACACTTGGACAAGCCCAAGCTCAAGGCCGGGGTCTGTAGAAAGTCTTCGAGTT
 CTCTCAGTGGGCAGAGCTCCATGAGCGGTCAAACAGTGAGCACCCTGATTCTCAACCAGCAACCCGGGA
 AAGCGTCAAGTCGGAAGATGGGGATGACGAAGAGCCGCTTACCGAGGCCGTTCTGCGGGCGTGCCAGG
 GTGCACACCGACTTCACCCCACTCCATGACACAGACTCACTCAAGCTCAAGAAAGGAGATATCATCG
 ATATAATCAGCAAGCCACCCATGGGGACCTGGATGGGCCTGTGAACAACAAAGTCGGCACGTTCAAGTT
 CATCTACGTGGACGTGCTCAGTGAAGACGAGGAGAAACCCAAACGCCCCACCAGGAGCGTCGGAAAGGA
 CGACCACCCAGCCCAAGTCTGTGGAGGATCTCCTGGATCGATTAACTAAAAGAGCACATGCCCACTT
 TCCTGTTCAATGGATATGAAGATTTGGACACCTTTAAGCTGCTGGAGGAGGAAGACTTGGATGAGTTAAA
 TATCAGGGACCCGGAACACAGAGCTGTTCTCTTGACAGCAGTGGAGCTGTTACAAGAGTATGACAGTAA
 AGCGACCAGTCAGGATCCAGGAGAAGCTGCTCGTTGACAGCCAGGCCCTGAGTGGATGCTCACCCCGAG
 ACTCAGGATGCTACGAAAGCAGTGAGAACCTGGAAAACGGCAAGACTCGGAAAGCTAGCCTCCTATCTGC
 CAAGTCATCCACCGAGCCAGCTTGAAGTCTTTAGCAGAAACCAGTTGGGCAATTACCCAACTTGCTT
 TTAATGAAATCAGGGGATGACTGAAGCAGGGACAGGAGGAGGGCAGGCTGGGTGGTGGCCTTGCCCGAG
 ACACGTCCAAGAGCTGTGACCCACCTGGTGTGACTGGTTGAATAAAAACCGAAGAAGCCTCCCAGTTTC
 CATCTGCCGGAGCTGTGAGACCCTGGAGGGCCCCAGACTGTGGACACTTGGCCCGATCCCATTCCCTG
 GATGACCTTCAAGTGGAGCCTGGTGTGAGCAAGACGTGCTACCGAGGTGACAGAACCGCCCTCAGA
 TTGTACCTGAAGTGCCACAGAAGACGACCCCTCTCCACGAAGGCCAGCCCTGGAGCAAGACTCTGC
 TGTGACAATGCATTGCTACTGACCCAAAGCAAGAGATTTTCTGAACCTCAGAAATTGACAACTAAGAAA
 CTGGAGGGCTCAATCGCAGCCTCTGGTTCGGCCCTGTACCCCTCAGTGTTCGCCAGAAACTATGATG
 CTCAGCCTCCTGGAGCTAAACACGGTTTAGCAAGGACCCCTCTGGAGGGCCACAGAAAAGGACACGAGTT
 TGAAGGAACACACCATCCCCTGGCACCAGAAAGAGGGGTAGATGCTGAGCAGAGAATGCAGCCAAAATT
 CCATCACAGCCTCCACCTGTTCTGCAAAAAGAGCAGAGAACGCCTTGCTAACGGACTCCACCTGTTC
 CCATGGGCCCCAGTGGGGCCCTCCCAGTCCCGATGCCCATGCCTGCCAGTAAAAGGGGCAGCCCCGC
 CAGCCCCACCAGCCTAGCGACTGTCCCCAGCACTGGCTCCCAGGCCTCTCTCAGGGCAGGCGCCTGGC
 AGCCCAACAAGCAAGGCCGCCCTGGCTCTCAGAGCTCCCCGAGAACAAGCCTCCAGGAGCACG
 GTGTGAAGCTGGGCCCGCTTTGACCAGGAAGTCTCCTGTGCCCGGGAGTGGATCTAGAAACGCTCAC
 TGAAAACAAGCTGCACGCTGAAGGCATCGATCTCACGGAGGAGCCGATTCTGATAAGCATGGCCGCTGT
 GGGATTCCTGAAGCCCTGGTGCAGAGATACGCAGAGGACTTGGATCAGCCCGAGCGGGACGTCGCCGCA
 ACATGGACCAGATCCGGGTGAAGCAGCTTCGGAAGCAGCACCGCATGGCGATTCCAAGTGGTGGACTCAC
 GGAATCTGCCGAAAGCCGCTCTCCTGGGTGCATTTCTGTCTGTGTGAGATTGGCTCATTCCATCGGT
 CTGCCCATGTACCCGGCACCTCTCCACCGGGCTTCAGCACACTGAGCCAAGTGCCTTCTCTGTCTC
 ACACTTGCTTACAGGAGCCGGCATCACAGAGGAGAGACATAAGAAAGCTCCTATCTGCAGCCAGACT
 CTCAAAGTCCGCCAGGCCCTGAGGCCATG

ACGCGTACGCGGCCGCTCGAGCAGAACTCATCTCAGAAGAGGATCTGGCAGCAATGATATCCTGGATT
 ACAAGGATGACGACGATAAGGTTAA

Protein Sequence: >RC218866 representing NM_015278
 Red=Cloning site Green=Tags(s)

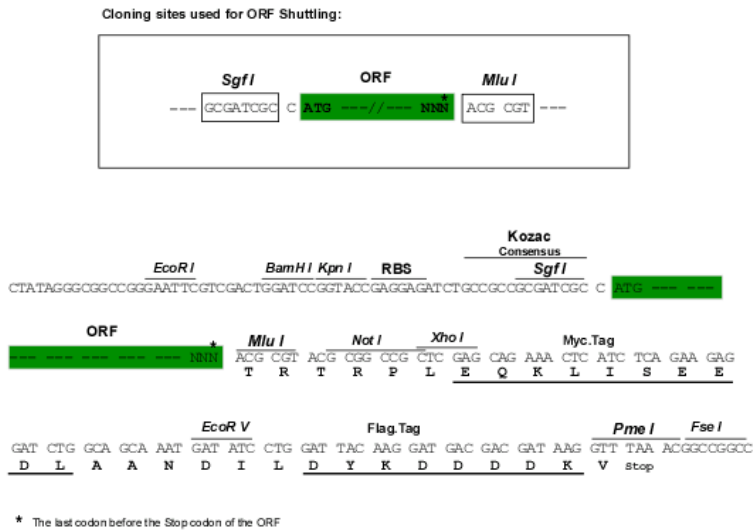
MEDAGAAGPGPEPEPEPEPEPEPAPEPEPEPKPGAGTSEAFSRLWTDVMGILDGSLGNIDDLAQYADYY
 NTCFSDVCERMEELRKRVSQDLEVEKPDASPTSLQLRSQIEESLGFCSAVSTPEVERKNPLHKSNSEDS
 SVGKGDWKKKNKYFWQNFQRKNQKIMRQT SKGEDVGYVASEITMSDEERIQLMVMVKEKMITIEEALARL
 KEYEAQHRQSAALDPADWPDGSYPTFDGSSNCNSREQSDDETEESVKFKRLHKL VNSTRVRKKLIRVEE
 MKKPSTEGGEEHVFENSPVLDERSALYSGVHKPLFFDGSPEKPPEDSDSLTSPSSSSLDTWGAGRKL
 VKTF SKGESRGLIKPPKMGTFFSYP EEKAQKVSRL TE GEMKKGLGSLSHGR TCSFGGFDL TNRSLHV
 GSNNSDPMGKEGDFVYKEVIKSPTASRISL GKKVKS VKETMRKRMSKYSVSSVSEQDSGLDGMGSPPPS
 QPDPEHLDPKPKL KAGGSVE LRSLSGQSSMSGQTVSTTDSSTSNRESVK SEDGDDEPPYRGPFCGRAR
 VHTDFTSPYD TDSLK LKKGDI IDIISKPPMG TWMGLLNKVGTFKFIYVDVLSEDEEKPRPTRRRRKG
 RPPQPKSVEDLLDRINLKEHMPTFLFNGYEDLDTFKLLEEEDLDELNIRDPEHRAVLLTAVELLQEYDSN
 SDQSGSQEKLLVDSQALSGCSPRDSGCYESSLENLNGKTRKASLLSAKSSSTEP SLKFSRNQLGNYP TLP
 LMKSGDALKQGGEEGRLGGGLAPDTSKSCDPPGVTGLNKNRRSLPVSICRSCETLEGPQTVDTWPRSHSL
 DDLQVEPGA EQDVPT ETEPPPQIVPEVPQKTTASSTKAQPLEQDSAVDNALLLTQSKRFSEPKLTTKK
 LEGSIAASGRGLSPPQCLPRNYDAQPPGAKHGLARTPLEGHRKGHEFEGTHHPLGTKEGVDAEQRMQPKI
 PSQPPVPAPKSRERLANGLHPVPMGSPGALPSPDAPCLPVKRGSPASPTSPSDCPPALAPRPLSGQAPG
 SPPSTRPPWLSL PENTSLQE HGVKLGAL TRKVS CARGVDLETLENK LHAEGIDLTEEPYSDKHGRC
 GIPEALVQRYAEDLDQPERDVAANMDQIRVKQLRKQHRMAIPSGGLTEICRKPVSPGCISSVSDWLSISIG
 LPMYAGTLSTAGFSTLSQVPSLSHTCLQEAGITEERHIRKLLSAARLFLKPPGPEAM

TRTRPLEQKLISEEDLAANDILDYKDDDDK

Chromatograms: https://cdn.origene.com/chromatograms/mg3036_e02.zip

Restriction Sites: SgfI-MluI

Cloning Scheme:

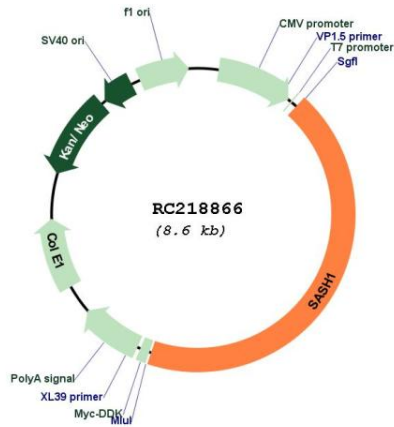


ACCN: NM_015278

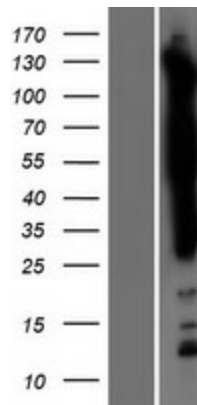
ORF Size: 3741 bp

OTI Disclaimer:	The molecular sequence of this clone aligns with the gene accession number as a point of reference only. However, individual transcript sequences of the same gene can differ through naturally occurring variations (e.g. polymorphisms), each with its own valid existence. This clone is substantially in agreement with the reference, but a complete review of all prevailing variants is recommended prior to use. More info
OTI Annotation:	This clone was engineered to express the complete ORF with an expression tag. Expression varies depending on the nature of the gene.
Components:	The ORF clone is ion-exchange column purified and shipped in a 2D barcoded Matrix tube containing 10ug of transfection-ready, dried plasmid DNA (reconstitute with 100 ul of water).
Reconstitution Method:	<ol style="list-style-type: none"> 1. Centrifuge at 5,000xg for 5min. 2. Carefully open the tube and add 100ul of sterile water to dissolve the DNA. 3. Close the tube and incubate for 10 minutes at room temperature. 4. Briefly vortex the tube and then do a quick spin (less than 5000xg) to concentrate the liquid at the bottom. 5. Store the suspended plasmid at -20°C. The DNA is stable for at least one year from date of shipping when stored at -20°C.
Note:	Plasmids are not sterile. For experiments where strict sterility is required, filtration with 0.22um filter is required.
RefSeq:	NM_015278.5
RefSeq Size:	7709 bp
RefSeq ORF:	3744 bp
Locus ID:	23328
UniProt ID:	O94885
Cytogenetics:	6q24.3-q25.1
Domains:	SH3, SAM
MW:	136.5 kDa
Gene Summary:	This gene encodes a scaffold protein involved in the TLR4 signaling pathway that may stimulate cytokine production and endothelial cell migration in response to invading pathogens. The encoded protein has also been described as a potential tumor suppressor that may negatively regulate proliferation, apoptosis, and invasion of cancer cells, and reduced expression of this gene has been observed in multiple human cancers. Mutations in this gene may be associated with abnormal skin pigmentation in human patients. [provided by RefSeq, Oct 2016]

Product images:



Circular map for RC218866



Western blot validation of overexpression lysate (Cat# [LY414668]) using anti-DDK antibody (Cat# [TA50011-100]). Left: Cell lysates from untransfected HEK293T cells; Right: Cell lysates from HEK293T cells transfected with RC218866 using transfection reagent MegaTran 2.0 (Cat# [TT210002]).