

GGGCAGGAGCGGCGTGTGCTGGTCAATGCCTCCCTCGGGTGGCCCAACGGCCTGGCCCTGGACCTGCAGG
 AGGGGAAGCTCTACTGGGGAGACGCCAAGACAGACAAGATCGAGGTGATCAATGTTGATGGGACGAAGAG
 GCGGACCCCTCTGGAGGACAAGCTCCCGCACATTTTCGGGTTACGCTGCTGGGGGACTTCATCTACTGG
 ACTGACTGGCAGCGCCGACGATCGAGCGGGTGCACAAGGTCAAGGCCAGCCGGGACGTCACTATTGACC
 AGCTGCCCCACCTGATGGGGCTCAAAGCTGTGAATGTGGCCAAGTCTGTCGGAACCAACCCGTGTGCGGA
 CAGGAACGGGGGGTGCAGCCACCTGTGCTTCTTACACCCACGCAACCCGGTGTGGCTGCCCATCGGC
 CTGGAGTGTGAGTGACATGAAGACCTGCATCGTGCCTGAGGCCTTCTTGGTCTTACCAGCAGAGCCG
 CCATCCACAGGATCTCCCTCGAGACCAATAACAACGACGTGGCCATCCCGCTCACGGGCGTCAAGGAGGC
 CTCAGCCCTGGACTTTGATGTGTCCAACAACCACATCTACTGGACAGACGTACAGCCTGAAGACCATCAGC
 CGCGCCTTCATGAACGGGAGCTCGGTGGAGCACGTGGTGGAGTTTGGCCTTGACTACCCCGAGGGCATGG
 CCGTTGACTGGATGGCAAGAACCTCTACTGGCCGACACTGGGACCAATAGAATCGAAGTGGCGCGGT
 GGACGGGCAGTTCGGCAAGTCTCGTGTGGAGGGACTTGGACAACCCGAGGTGCTGGCCCTGGATCCC
 ACCAAGGGCTACATCTACTGGACCGAGTGGGGCGGCAAGCCGAGGATCGTGGGGCCTTCATGGACGGGA
 CCAACTGCATGACGCTGGTGGACAAGTGGGCCGGCCAAACGACCTCACCATTGACTACGCTGACCAGCG
 CCTCTACTGGACCGACCTGGACACCAACATGATCGAGTCTCAACATGCTGGGTGAGGAGCGGGTCTGT
 ATTGCCGACGATCTCCCGCACCCGTTCCGTCTGACGACGTACAGCGATTATATCTACTGGACAGACTGGA
 ATCTGCACAGCATTGAGCGGGCCGACAAGACTAGCGGCCGGAACCCGACCCCTCATCCAGGGCCACCTGGA
 CTTCTGATGGACATCCTGGTGTCCACTCCTCCCGCCAGGATGGCCTCAATGACTGTATGCACAACAAC
 GGGCAGTGTGGGACGCTGTGCCTTGCCATCCCGGGCGGCCACCGTGGCGCTGCGCCTCACACTACACCC
 TGGACCCAGCAGCCGCAACTGCAGCCCGCCACCACCTTCTTGTGTTGAGCCAGAAATCTGCCATCAG
 TCGGATGATCCCGGACGACCAGCACAGCCGGATCTCATCCTGCCCTGCATGGACTGAGGAACGTCAA
 GCCATCGACTATGACCCACTGGACAAGTTCATCTACTGGGTGGATGGGCGCCAGAATCAAGCGAGCCA
 AGGACGACGGGACCCAGCCCTTTGTTTGGACTCTCTGAGCCAAGGCCAAAACCCAGCCAGCAGCCCA
 CGACCTCAGCATCGACATCTACAGCCGGACACTGTTCTGGACGTGCGAGGGCCACCAATACCATCAAGCTC
 CACAGGCTGAGCGGGGAAGCCATGGGGGTGGTGTGCTGCGTGGGACCGCGCAAGCCAGGGCCATCGTCTG
 TCAACGCGGAGCGAGGGTACCTGTACTTACCAACATGCAGGACCGGGCAGCCAAGATCGAACGCGCAGC
 CCTGGACGGCACCGAGCGGAGGTCTCTTACCACCGGCCTCATCCGCCCTGTGGCCCTGGTGGTGGAC
 AACACTGGGCAAGCTGTTCTGGGTGGACGCGGACCTGAAGCGCATTGAGAGCTGTGACCTGTGAGGGG
 CCAACCGCCTGACCTGGAGGACGCCAACATCGTGCAGCCTTGGGCTGACCATCCTTGGCAAGCATCT
 CTACTGGATCGACCGCCAGCAGCAGATGATCGAGCGTGTGGAGAAGACCACCGGGGACAAGCGGACTCGC
 ATCCAGGGCCGTGTGCCACCTCACTGGCATCCATGCAGTGGAGGAAGTCAGCCTGGAGGAGTTCTCAG
 CCCACCATGTGCCCGTGAATGGTGGCTGCTCCACATCTGTATTGCCAAGGGTGTGGGACACCACG
 GTGCTCATGCCAGTCCACCTCGTGTCTCTGCAGAACCTGCTGACCTGTGGAGAGCCGCCACCTGCTCC
 CCGGACAGTTCATGTGCCACAGGGGAGATCGACTGTATCCCGGGGCTGGCGCTGTGACGGTTTC
 CCGAGTGCATGACCAGAGCGACGAGGAGGGTGGCCCGTGTGCTCCGCCGCCAGTTCCCTGCGCGCG
 GGGTCACTGTGTGGACCTGCGCCTGCGTGCAGCGCGAGGCAGACTGTGAGGACCGTCAAGCAGGGT
 GACTGTGACGCCATCTGCCTGCCAACCAAGTTCGGGTGTGCGAGCGGCCAGTGTGCTCCTCATAAACAGC
 AGTGGACTCCTTCCCCGACTGTATCGACGGCTCCGACGAGCTCATGTGTGAAATCACAAGCCGCCCTC
 AGACGACAGCCCGGCCACAGCAGTGCATCGGGCCCGTCAATTGGCATCATCCTCTCTTCTGTCATG
 GGTGGTGTCTATTTTGTGTGCCAGCGCGTGGTGTGCCAGCCTATGCGGGGGCCAAACGGGCCCTCCCGC
 ACGAGTATGTGAGCGGGACCCCGCAGTGCCTCAATTTTCATAGCCCGGGCGGTTCCAGCATGGCCC
 CTTACAGGCATCGCATGCGGAAAGTCCATGATGAGCTCCGTGAGCCTGATGGGGGGCGGGGCGGGGTG
 CCCCTCTACGACCGGAACCACGTACAGGGGCTCGTCCAGCAGCTGTCCAGCAGCAAGGCCACGCTGT
 ACCCGCCGATCCTGAACCCGCGCCCTCCCGGCCACGGACCCCTCCCTGTACAACATGGACATGTTCTA
 CTCTTCAAACATTCCGGCCACTGCGAGACCGTACAGGCCCTACATCATTGAGGAATGGCGCCCCGACG
 ACGCCCTGCAGCACCACGCTGTGTGACAGCGACTACAGCGCCAGCGCTGGAAGGCCAGCAAGTACTACC
 TGGATTTGAACTCGGACTCAGACCCCTATCCACCCCAACCCAGCCCCACAGCCAGTACCTGTGCGCGGA
 GGACAGCTGCCCGCCTCGCCCGCCACCGAGAGGAGCTACTTCCATCTCTTCCCGCCCCCTCGTCCCC
 TGCACGGACTCATCC

ACGCGTACGCGGCGGCTCGAGCAGAACTCATCTCAGAAGAGGATCTGGCAGCAAATGATATCCTGGATT
 ACAAGGATGACGACGATAAGGTTTAA

Protein Sequence: >RC218864 representing NM_002335
 Red=Cloning site Green=Tags(s)

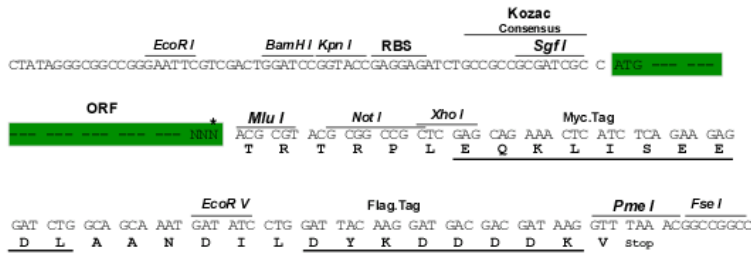
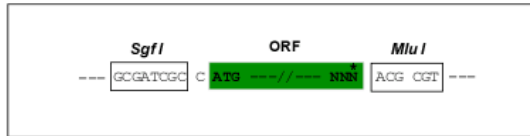
```

MEAAPGPPWPLLLLLLLLLLALCGCPAPAAASPLLLFANRRDVRLLVDAGGVKLESTIVVSGLEDAAVDF
QFSKGAVYWTDVSEEAIKQTYLNTGAAVQNVVISGLVSPDGLACDWVGKKLYWTDSETNRIEVANLNGT
SRKVLFWQDLDPRAIALDPAHGMYWTDWGETPRIERAGMDGSTRKII VSDIYWPNGLTIDLEEKLY
WADAKLSFIHRANLDGSRQKVEGSLTHPFALTLSGDLYWTDWQTRSIHACNKRTGGKRKEILSALYS
PMDIQVLSQERQPFHTRCEEDNGGCSHLCLLSPSEPFYTCACPTGVQLQDNGRTCKAGAEVLLARRT
DLRRISLDTPDFTDIVLQVDDIRHAI AIDYDPLEGYVYWTDDEVRAIRRAYLDGSGAQTLLVNTINDPDG
IAVDWVARNLYWTDGTDRIEVTRLNGTSRKILVSEDLDEPRAIALHPVMGLMYWTDWGENPKIECANLD
GQERRVLVNASLWPNGLALDLQEGKLYWGDAKTDKIEVINVDGTRRLLLEDKLPHIFGFTLLGDFIYW
TDWQRRIERVHKVKASRDVIIDQLPDLMLKAVNVAKVGTNPNCADRNGGCSHL CFFTPHATRCGCPIG
LELLSDMKTICIVPEAFLVFTSRAAIHRISLETNNNDVAIPLTGVKEASALDFDVSNNHIYWTDVSLKTIS
RAFNMNGSSVEHVVEFLDYPEGMAVDWMGKNLYWADTGTNRIEVARLDGQFRQVLVWRDLNPRSLALDP
TKGYIYWTEWGGKPRIVAFMDGTNCMTLVKVGGRANDLTI DYADQRLYWTDLDTNMI ESSNMLGQERVV
IADDLPHPFGLTQYSDIYWTDWNLHSIERADKTSGRNRTLIQGHLD FVMDILVFHSSRQGLNDCMHNN
GQCQQLCLAIPGGHRCGCASHYTLDPSSRNCSPPTTFLFSQKSAISRMIPDDQHSPDLILPLHGLRNVK
AIDYDPLDKFIYWVDGRQNIKRAKDDGTQPFVLTSLSQGNPDRQPHDLSIDIYSRTLFWTCEANTIN V
HRLSGEAMGVVLRGDRDKPRAIVVNAERGYLYFTNMQDRAAKIERAALDGTEREVLTFTGLIRPVALVVD
NTLGLKFWVDADLKRIESCDL SGANRLTLEDANIVQPLGLTILGKHL YWIDRQQQMIERVEKTTGDKRTR
IQGRVAHLTGIHAVEEVSL EEFSAHPCARDNGGCSHICIAKGDGTPRCSCP VHLVLLQNLLTCGEPPTCS
PDQFACATGEIDCIPGAWRCDGFPECDQSD EEGCPVCSAAQFPCARGQCVDLRL RCDGEADCQDRSDEV
DCDAICLPNQFRCASGQCVLIKQQCDSFPDCIDGSD ELMCEITKPPSDDSPA HSSAIGPVIIGIILSLFVM
GGVYFVCQRVVCQRYAGANGPFPHEYVSGTPHVPLNFIAPGGSQHGPFTGIACGKSMSSVSLMGGRRGV
PLYDRNHVTGASSSSSSTKATLYPPILNPPSPATDPSLYNMDMFYSSNIPATARPYRPIYIRGMAPPT
TPCSTDVCDSDYSASRWKASKYYLDLNSDSDPYPPPTPHSQYLSAEDSCPPSPATERSYFHLFPPPPSP
CTDSS
    
```

TRTRPLEQKLI SEEDLAANDILDYKDDDDKV

Chromatograms: https://cdn.origene.com/chromatograms/mk6280_b07.zip
 Restriction Sites: SgfI-MluI
 Cloning Scheme:

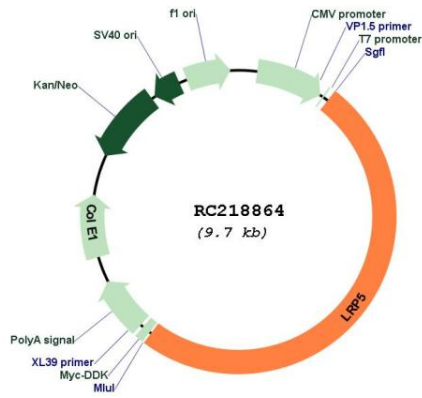
Cloning sites used for ORF Shuttling:



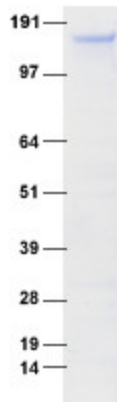
* The last codon before the Stop codon of the ORF

ACCN:	NM_002335
ORF Size:	4845 bp
OTI Disclaimer:	The molecular sequence of this clone aligns with the gene accession number as a point of reference only. However, individual transcript sequences of the same gene can differ through naturally occurring variations (e.g. polymorphisms), each with its own valid existence. This clone is substantially in agreement with the reference, but a complete review of all prevailing variants is recommended prior to use. More info
OTI Annotation:	This clone was engineered to express the complete ORF with an expression tag. Expression varies depending on the nature of the gene.
Components:	The ORF clone is ion-exchange column purified and shipped in a 2D barcoded Matrix tube containing 10ug of transfection-ready, dried plasmid DNA (reconstitute with 100 ul of water).
Reconstitution Method:	<ol style="list-style-type: none"> 1. Centrifuge at 5,000xg for 5min. 2. Carefully open the tube and add 100ul of sterile water to dissolve the DNA. 3. Close the tube and incubate for 10 minutes at room temperature. 4. Briefly vortex the tube and then do a quick spin (less than 5000xg) to concentrate the liquid at the bottom. 5. Store the suspended plasmid at -20°C. The DNA is stable for at least one year from date of shipping when stored at -20°C.
RefSeq:	NM_002335.4
RefSeq Size:	5100 bp
RefSeq ORF:	4848 bp
Locus ID:	4041
UniProt ID:	O75197
Cytogenetics:	11q13.2
Domains:	ldl_recept_b, ldl_recept_a, EGF, EGF
Protein Families:	Druggable Genome, Transmembrane
Protein Pathways:	Wnt signaling pathway
MW:	179 kDa
Gene Summary:	This gene encodes a transmembrane low-density lipoprotein receptor that binds and internalizes ligands in the process of receptor-mediated endocytosis. This protein also acts as a co-receptor with Frizzled protein family members for transducing signals by Wnt proteins and was originally cloned on the basis of its association with type 1 diabetes mellitus in humans. This protein plays a key role in skeletal homeostasis and many bone density related diseases are caused by mutations in this gene. Mutations in this gene also cause familial exudative vitreoretinopathy. Alternative splicing results in multiple transcript variants. [provided by RefSeq, May 2014]

Product images:



Circular map for RC218864



Coomassie blue staining of purified LRP5 protein (Cat# [TP318864]). The protein was produced from HEK293T cells transfected with LRP5 cDNA clone (Cat# RC218864) using MegaTran 2.0 (Cat# [TT210002]).