

## Product datasheet for RC218856

### LAX1 (NM\_017773) Human Tagged ORF Clone

#### Product data:

Product Type:	Expression Plasmids
Product Name:	LAX1 (NM_017773) Human Tagged ORF Clone
Tag:	Myc-DDK
Symbol:	LAX1
Synonyms:	LAX
Mammalian Cell Selection:	Neomycin
Vector:	pCMV6-Entry (PS100001)
E. coli Selection:	Kanamycin (25 ug/mL)
ORF Nucleotide Sequence:	>RC218856 ORF sequence Red=Cloning site Blue=ORF Green=Tags(s)

TTTTGTAATACGACTCACTATAGGGCGCCGGGAATTCGTCGACTGGATCCGGTACCGAGGAGATCTGCC  
GCC**CGATCGCC**

ATGGATGGTGTCACTCCAACCCTTTCGACAATCAGAGGGAGGACCTTGGAGTCCAGCACTCTGCATGTGA  
CTCCCCGAGCCTGGACAGAAATAAGACCAGATACCAACATCTTTCCGGTTTTCGGGACTCCTCGC  
CATCCTCTGGTGGTTCGGTTTTCTGCATCTTGTGGAATTGGAATAAACGGAAGAAGCGACAAGTTCT  
TACCTCCGAGTTACCGTCATGCCCTTGTGACTTTGCCACAAACCAGACAAGAGCCAAAAATTTATG  
ACATCTTGCCTTGGCGACAGGAAGACCTGGGGAGACATGAGTCGAGGAGTATGCGCATTTCAGTACTGA  
GAGCCTCCTCTCCAGAAATCTGAGAGCCCGGAGCATGTGCCCTCCAAGCAGGCAATGCCTTCCAGGAG  
CATAACAGCCACATCCATGCCACAGAGTACGCGGTGGGTATCTATGACAACGCCATGGTCCCCCAGATGT  
GTGGGAACCTCACTCCCTCGGCACACTGCATCAATGTCAGAGCTTCCAGAGACTGCGCAAGCATTCTTTC  
AGAGGATTCGCATGATTATGTCAATGTCCCCACAGCAGAAGAGATTGCTGAGACTCTAGCTTCTACAAA  
AGCCCTTCCAGAAATCTCTTTGTTCTTCCAGTACCCAGAAGCTGGAGTTTACTGAGGAAAGAGATGAGG  
GCTGTGGAGATGCTGGTACTGCACCAGTTTGTATTCTCCAGGAGCTGAGGACAGTGATTCACTCAGCAA  
TGGAGAAGGTTCTTCTCAGATCTCAAATGACTATGTCAACATGACAGGGTTGGATCTCAGTGCCATCCAG  
GAAAGGCAGCTCTGGGTGGCTTTTCAGTGCTGCAGAGACTATGAAAATGTTCCAGCAGCAGATCCCAGTG  
GAAGCCAGCAGCAGGCTGAGAAAGATGTGCCATCCTCAAACATAGGTCATGTGCGAGGACAAGACAGATGA  
TCCCGGGACCCATGTCCAATGTGTCAAAGGACATTCTTGTCTCAGGGATTATGCAGACTTTTCAGCCA  
TTCACACAGAGTGAGGACAGTCAGATGAAACATAGAGAAGAGATGTCAAATGAGGACTCCAGTGACTATG  
AAAATGTGCTAACTGCCAAGTTAGGAGGCAGGGACTCTGAGCAGGGGCCTGGCACTCAGCTCCTTCTGA  
TGAA

**ACGCGT**ACGCGGCCGCTCGAGCAGAAACTCATCTCAGAAGAGGATCTGGCAGCAAATGATATCCTGGATT  
ACAAGGATGACGACGATAAGGTTTAA



[View online »](#)

**Protein Sequence:** >RC218856 protein sequence  
Red=Cloning site Green=Tags(s)

MDGVTPTLSTIRGRTLESSTLHVTPRSLDRNKDQITNIFSGFAGLLAILLVAVFCILWNNKRKKRQVP  
 YLRVTVMPLLTLPQTRQAKNIYDILPWRQEDLGRHESRSMRIFSTESLLSRNSEPEHVPSQAGNAFQE  
 HTAHIHATEYAVGIYDNAMVPQMCGNLTPSAHCINVRSRDCASISSESDSHDYVNVPTAEEIAETLASTK  
 SPSRNL FVLPSTQKLEFTEERDEGCGDAGDCTSLYSPGAEDSDLSNNEGSSQISNDYVNM TGLDLSAIQ  
 ERQLWVAFQCCRDYENVPAADPSGSQQQAEKDVPSNIGHVEDKTD DDPGTHVQCVKRTFLASGDYADFQP  
 FTQSEDSQMKHREEMS NEDSSDYENVL TAKLGGRDSEQGPQTQLLPDE

TRTRPLEQKLISEEDLAANDILDYKDDDDKV

**Chromatograms:** [https://cdn.origene.com/chromatograms/mk6453\\_f08.zip](https://cdn.origene.com/chromatograms/mk6453_f08.zip)

**Restriction Sites:** SgfI-MluI

**Cloning Scheme:**



**ACCN:** NM\_017773

**ORF Size:** 1194 bp

**OTI Disclaimer:** The molecular sequence of this clone aligns with the gene accession number as a point of reference only. However, individual transcript sequences of the same gene can differ through naturally occurring variations (e.g. polymorphisms), each with its own valid existence. This clone is substantially in agreement with the reference, but a complete review of all prevailing variants is recommended prior to use. [More info](#)

**OTI Annotation:** This clone was engineered to express the complete ORF with an expression tag. Expression varies depending on the nature of the gene.

**Components:** The ORF clone is ion-exchange column purified and shipped in a 2D barcoded Matrix tube containing 10ug of transfection-ready, dried plasmid DNA (reconstitute with 100 ul of water).

**Reconstitution Method:**

1. Centrifuge at 5,000xg for 5min.
2. Carefully open the tube and add 100ul of sterile water to dissolve the DNA.
3. Close the tube and incubate for 10 minutes at room temperature.
4. Briefly vortex the tube and then do a quick spin (less than 5000xg) to concentrate the liquid at the bottom.
5. Store the suspended plasmid at -20°C. The DNA is stable for at least one year from date of shipping when stored at -20°C.

**RefSeq:** [NM\\_017773.4](#)

**RefSeq Size:** 3298 bp

**RefSeq ORF:** 1197 bp

**Locus ID:** 54900

**UniProt ID:** [Q8IWW1](#)

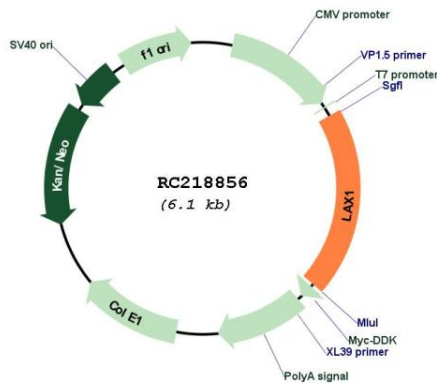
**Cytogenetics:** 1q32.1

**Protein Families:** Transmembrane

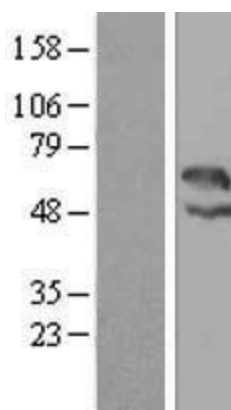
**MW:** 44.1 kDa

**Gene Summary:** Negatively regulates TCR (T-cell antigen receptor)-mediated signaling in T-cells and BCR (B-cell antigen receptor)-mediated signaling in B-cells.[UniProtKB/Swiss-Prot Function]

**Product images:**



Circular map for RC218856



Western blot validation of overexpression lysate (Cat# [LY413546]) using anti-DDK antibody (Cat# [TA50011-100]). Left: Cell lysates from untransfected HEK293T cells; Right: Cell lysates from HEK293T cells transfected with RC218856 using transfection reagent MegaTran 2.0 (Cat# [TT210002]).