

Product datasheet for **RC218849**

EGFL7 (NM_016215) Human Tagged ORF Clone

Product data:

Product Type: Expression Plasmids
Product Name: EGFL7 (NM_016215) Human Tagged ORF Clone
Tag: Myc-DDK
Symbol: EGFL7
Synonyms: NEU1; VE-STATIN; ZNEU1
Mammalian Cell Selection: Neomycin
Vector: pCMV6-Entry (PS100001)
E. coli Selection: Kanamycin (25 ug/mL)
ORF Nucleotide Sequence: >RC218849 representing NM_016215
Red=Cloning site Blue=ORF Green=Tags(s)

TTTTGTAATACGACTCACTATAGGGCGGCCGGAATTCGTCGACTGGATCCGGTACCGAGGAGATCTGCC
GCC**CGATCGCC**

ATGAGGGGCTCTCAGGAGGTGCTGCTGATGTGGCTTCTGGTGTGGCAGTGGGCGGCACAGAGCACGCCT
ACCGGCCCGCCGTAGGGTGTGTGCTGTCCGGCTCACGGGACCCTGTCTCCGAGTCGTTCTGCAGCG
TGTGTACCAGCCCTTCTCACCACCTGCGACGGGCACGGGCTGCAGCACCTACCGAACATCTATAGG
ACCGCCTACCGCCGACCCCTGGGCTGGCCCTGCCAGGCCTCGTACGCGTGTGCCCGGCTGGAAGA
GGACCAGCGGGCTTCTGGGGCTGTGGAGCAGCAATATGCCAGCCGCCATGCCGGAACGGAGGGAGCTG
TGTCCAGCCTGGCCGCTGCCGCTGCCCTGCAGGATGGCGGGTGACACTTGCCAGTCAGATGTGGATGAA
TGCAGTGTAGGAGGGGGCTGTCCCCAGCGCTGCGTCAACACCGCCGCGAGTTACTGGTGCCAGTGTT
GGGAGGGGCACAGCCTGTCTGCAGACGGTACACTCTGTGTGCCAAGGGAGGGCCCCCAGGGTGGCCCC
CAACCCGACAGGAGTGGACAGTGAATGAAGGAAGAAGTGCAGAGGCTGCAGTCCAGGGTGGACCTGCTG
GAGGAGAAGTGCAGTGGTGTGGCCCCACTGCACAGCCTGGCCTCGCAGGCACTGGAGCATGGGCTCC
CGGACCCCGCAGCCTCCTGGTGCATCCTCCAGCAGCTCGGCCGCATCGACTCCCTGAGCGAGCAGAT
TTCTTCTGGAGGAGCAGCTGGGTCTGCTCCTGCAAGAAAGACTCG

AG**CGGACCG**ACGCGTACGCGCCGCTCGAGCAGAACTCATCTCAGAAGAGGATCTGGCAGCAAATGATATCC
TGGATTACAAGGATGACGACGATAAGGTTAA



Protein Sequence: >RC218849 representing NM_016215
Red=Cloning site Green=Tags(s)

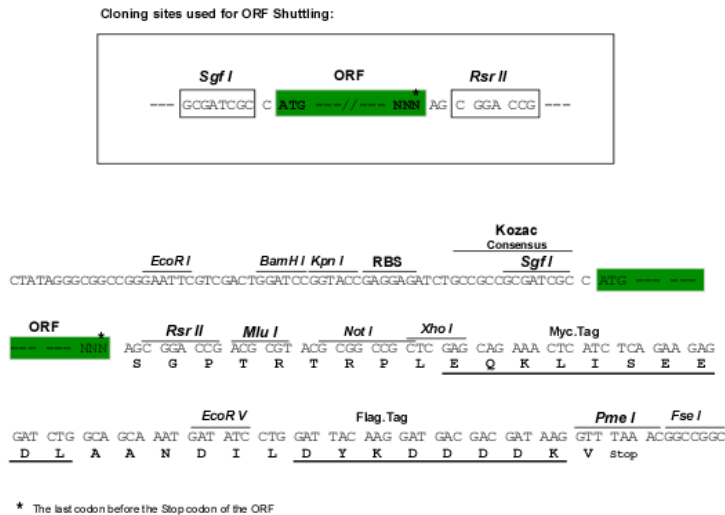
MRGSQEVLLMWLLVLA VGGTEHAYRPGRRVCAVRAHGDVPVSESFVQRVYQPFLTTCDGHRACSTYRTIYR
 TAYRRSPGLAPARPRYACCPGWKRTSGLPGACGAAICQPPCRNGGSCVQPGRCRCPAGWRGDTQCSDVDE
 CSARRGGCPQRCVNTAGSYWCQCWEHSL SADGTL CVPKGGPPRVAPNPTGVDSAMKEEVQRLQSRVDLL
 EEKLQLVLA PLHSLASQA LEHGLPDPG SLLVHSFQQLGRIDSLSEQISFLEEQLGSCSCKKDS

SGPTRRRLEQKLI SEEDLAANDILDYKDDDDKV

Chromatograms: https://cdn.origene.com/chromatograms/mk6189_e04.zip

Restriction Sites: SgfI-RsrII

Cloning Scheme:



ACCN: NM_016215

ORF Size: 819 bp

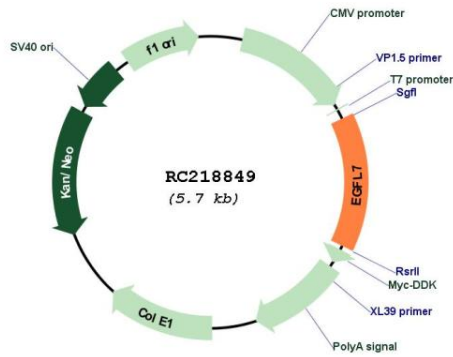
OTI Disclaimer: Due to the inherent nature of this plasmid, standard methods to replicate additional amounts of DNA in E. coli are highly likely to result in mutations and/or rearrangements. Therefore, OriGene does not guarantee the capability to replicate this plasmid DNA. Additional amounts of DNA can be purchased from OriGene with batch-specific, full-sequence verification at a reduced cost. Please contact our customer care team at custsupport@origene.com or by calling 301.340.3188 option 3 for pricing and delivery.

The molecular sequence of this clone aligns with the gene accession number as a point of reference only. However, individual transcript sequences of the same gene can differ through naturally occurring variations (e.g. polymorphisms), each with its own valid existence. This clone is substantially in agreement with the reference, but a complete review of all prevailing variants is recommended prior to use. [More info](#)

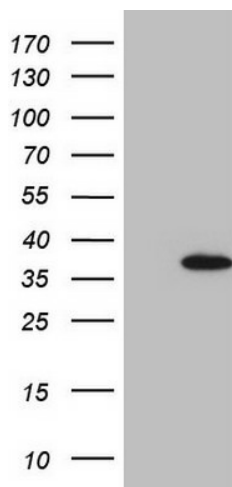
OTI Annotation: This clone was engineered to express the complete ORF with an expression tag. Expression varies depending on the nature of the gene.

Components:	The ORF clone is ion-exchange column purified and shipped in a 2D barcoded Matrix tube containing 10ug of transfection-ready, dried plasmid DNA (reconstitute with 100 ul of water).
Reconstitution Method:	<ol style="list-style-type: none">1. Centrifuge at 5,000xg for 5min.2. Carefully open the tube and add 100ul of sterile water to dissolve the DNA.3. Close the tube and incubate for 10 minutes at room temperature.4. Briefly vortex the tube and then do a quick spin (less than 5000xg) to concentrate the liquid at the bottom.5. Store the suspended plasmid at -20°C. The DNA is stable for at least one year from date of shipping when stored at -20°C.
Note:	Plasmids are not sterile. For experiments where strict sterility is required, filtration with 0.22um filter is required.
RefSeq:	NM_016215.5
RefSeq Size:	1569 bp
RefSeq ORF:	822 bp
Locus ID:	51162
UniProt ID:	Q9UHF1
Cytogenetics:	9q34.3
Domains:	EGF_CA, EGF, EGF
Protein Families:	Secreted Protein
MW:	29.4 kDa
Gene Summary:	This gene encodes a secreted endothelial cell protein that contains two epidermal growth factor-like domains. The encoded protein may play a role in regulating vasculogenesis. This protein may be involved in the growth and proliferation of tumor cells. Alternate splicing results in multiple transcript variants. [provided by RefSeq, Feb 2012]

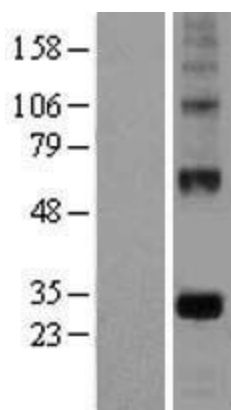
Product images:



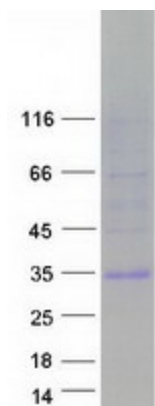
Circular map for RC218849



HEK293T cells were transfected with the pCMV6-ENTRY control (Cat# [PS100001], Left lane) or pCMV6-ENTRY EGFL7 (Cat# RC218849, Right lane) cDNA for 48 hrs and lysed. Equivalent amounts of cell lysates (5 ug per lane) were separated by SDS-PAGE and immunoblotted with anti-EGFL7 (Cat# [TA807846])(1:2000). Positive lysates [LY402519] (100ug) and [LC402519] (20ug) can be purchased separately from OriGene.



Western blot validation of overexpression lysate (Cat# [LY404428]) using anti-DDK antibody (Cat# [TA50011-100]). Left: Cell lysates from untransfected HEK293T cells; Right: Cell lysates from HEK293T cells transfected with [RC218903] using transfection reagent MegaTran 2.0 (Cat# [TT210002]).



Coomassie blue staining of purified EGFL7 protein (Cat# [TP318849]). The protein was produced from HEK293T cells transfected with EGFL7 cDNA clone (Cat# RC218849) using MegaTran 2.0 (Cat# [TT210002]).