

Product datasheet for **RC218844**

MASP2 (NM_139208) Human Tagged ORF Clone

Product data:

Product Type: Expression Plasmids
Product Name: MASP2 (NM_139208) Human Tagged ORF Clone
Tag: Myc-DDK
Symbol: MASP2
Synonyms: MAP-2; MAP19; MASP-2; MASP1P1; sMAP
Mammalian Cell Selection: Neomycin
Vector: pCMV6-Entry (PS100001)
E. coli Selection: Kanamycin (25 ug/mL)
ORF Nucleotide Sequence: >RC218844 representing NM_139208
Red=Cloning site Blue=ORF Green=Tags(s)

TTTTGTAATACGACTCACTATAGGGCGCCGGGAATTCGTCGACTGGATCCGGTACCGAGGAGATCTGCC
GCC**CGATCGCC**

ATGAGGCTGCTGACCCTCCTGGCCTTCTGTGTGGCTCGGTGGCCACCCCTTGGGCCGAAGTGGCCTG
AACCTGTGTTCCGGCGCCTGGCATCCCCGGCTTCCAGGGGAGTATGCCAATGACCAGGAGCGGCCTG
GACCCTGACTGCACCCCGGCTACCGCTGCGCCTCTACTTCACCCACTTCGACCTGGAGCTCTCCCAC
CTCTGCGAGTACGACTTCGTCAAGCTGAGCTCGGGGCCAAGGTGCTGGCCACGCTGTGCGGGCAGGAGA
GCACAGACACGGAGCGGGCCCTGGCAAGGACACTTTCTACTCGTGGGCTCCAGCTGGACATTACCTT
CCGCTCCGACTACTCCAACGAGAAGCCGTTACCGGGTTCGAGGCCTTCTATGCAGCCGAGGACATTGAC
GAGTGCCAGGTGGCCCCGGGAGAGGCGCCACCTGCGACCACCACTGCCACAACCACCTGGGCGGTTTCT
ACTGCTCTGCCGCGCAGGCTACGTCTGCACCGTAACAAGCGCACCTGCTCAGAGCAGAGCCTC

ACGCGTACGCGGCCGCTCGAGCAGAACTCATCTCAGAAGAGGATCTGGCAGCAAATGATATCCTGGATT
ACAAGGATGACGACGATAAGGTTTAA

Protein Sequence: >RC218844 representing NM_139208
Red=Cloning site Green=Tags(s)

MRLLTLLGLLCGSVATPLGPKWPEPVFGRLASPGFPGEYANDQERRWLTAPPGYRLRLYFTHFDLELSH
LCEYDFVKLSSGAKVLATLCGQESTDTERAPGKDTFYSLGSSLDITFRSDYSNEKPFTGFEAFYAAEID
ECQVAPGEAPCDHHCHNHLGGFYCSCRAGYVLRHNRKRTCSEQSL

TRTRPLEQKLISEEDLAANDILDYKDDDDKV

Chromatograms: https://cdn.origene.com/chromatograms/mk6482_a09.zip



[View online »](#)

Cytogenetics: 1p36.22

Domains: CUB, EGF_CA, EGF

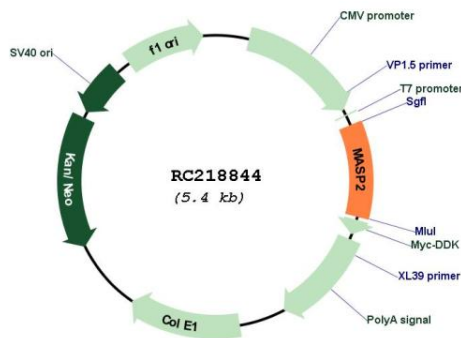
Protein Families: Druggable Genome, Protease, Secreted Protein

Protein Pathways: Complement and coagulation cascades

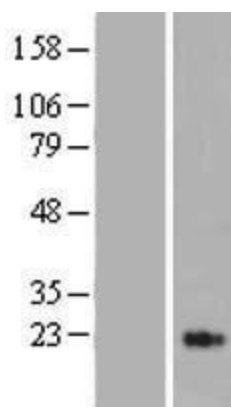
MW: 19 kDa

Gene Summary: This gene encodes a member of the peptidase S1 family of serine proteases. The encoded preproprotein is proteolytically processed to generate A and B chains that heterodimerize to form the mature protease. This protease cleaves complement components C2 and C4 in order to generate C3 convertase in the lectin pathway of the complement system. The encoded protease also plays a role in the coagulation cascade through cleavage of prothrombin to form thrombin. Myocardial infarction and acute stroke patients exhibit reduced serum concentrations of the encoded protein. Alternative splicing results in multiple transcript variants, at least one of which encodes an isoform that is proteolytically processed. [provided by RefSeq, Feb 2016]

Product images:



Circular map for RC218844



Western blot validation of overexpression lysate (Cat# [LY408354]) using anti-DDK antibody (Cat# [TA50011-100]). Left: Cell lysates from untransfected HEK293T cells; Right: Cell lysates from HEK293T cells transfected with RC218844 using transfection reagent MegaTran 2.0 (Cat# [TT210002]).