

Product datasheet for RC218842

Eg5 (KIF11) (NM_004523) Human Tagged ORF Clone

Product data:

| | |
|---------------------------|---|
| Product Type: | Expression Plasmids |
| Product Name: | Eg5 (KIF11) (NM_004523) Human Tagged ORF Clone |
| Tag: | Myc-DDK |
| Symbol: | Eg5 |
| Synonyms: | EG5; HKSP; KNSL1; MCLMR; TRIP5 |
| Mammalian Cell Selection: | Neomycin |
| Vector: | pCMV6-Entry (PS100001) |
| E. coli Selection: | Kanamycin (25 ug/mL) |
| ORF Nucleotide Sequence: | >RC218842 representing NM_004523 Red=Cloning site Blue=ORF Green=Tags(s) |

TTTTGTAATACGACTCACTATAGGGCGGCCGGAATTCGTCGACTGGATCCGGTACCGAGGAGATCTGCC
GCCCGGATCGCC

ATGGCGTCGCAGCCAAATTCGTCTGCGAAGAAGAAAGAGGAGAAGGGGAAGAACATCCAGGTGGTGGTGA
GATGCAGACCATTTAATTTGGCAGAGCGGAAAGCTAGCGCCCATTC AATAGTAGAATGTGATCCTGTACG
AAAAGAAGTTAGTGTACGAAGTGGAGGATTGGCTGACAAGAGCTCAAGGAAAACATACACTTTTGATATG
GTGTTTGGAGCATCTACTAACAGATTGATGTTTACCGAAGTGTGTTTGTCCAATCTGGATGAAGTTA
TTATGGGCTATAATTGCACTATCTTTGCGTATGGCCAACTGGCACTGGAAAACTTTTACAATGGAAGG
TGAAGGTCACCTAATGAAGAGTATACCTGGGAAGAGGATCCCTTGGCTGGTATAATTCCACGTACCCTT
CATCAAATTTTTGAGAAACTTACTGATAATGGTACTGAATTTTTCAGTCAAAGTGTCTCTGTTGGAGATCT
ATAATGAAGAGCTTTTTGATCTTCTTAATCCATCATCTGATGTTTCTGAGAGACTACAGATGTTTGATGA
TCCCCGTAACAAGAGAGGAGTGATAATTAAGGTTTAGAAGAAATACAGTACACAACAAGGATGAAGTC
TATCAAATTTAGAAAAGGGGCGAGCAAAAAGGCAACTGCAGCTACTCTGATGAATGCATACTCTAGTC
GTTCCCACTCAGTTTTCTCTGTTACAATACATATGAAAGAACTACGATTGATGGAGAAGAGCTTGTAA
AATCGGAAAGTTGAACTTGGTTGATCTTGCAGGAAGTAAAACATTGGCCGTTCTGGAGCTGTTGATAAG
AGAGCTCGGGAAGCTGGAATATAAATCAATCCCTGTTGACTTTGGGAAGGTCATTACTGCCCTGTGAG
AAAGAACACCTCATGTTCCCTTATCGAGAATCTAACTAACTAGAATCCTCCAGGATTCTCTTGGAGGGCG
TACAAGAACATCTATAATTGCAACAATTTCTCCTGCATCTCTCAATCTTGAAGAACTCTGAGTACATTG
GAATATGCTCATAGAGCAAGAACATATTGAATAAGCCTGAAGTGAATCAGAACTCACAAAAAAGCTC
TTATTAAGGAGTATACGGAGGAGATAGAACGTTTAAAACGAGATCTTGTGTCAGCCCGTGAGAAAAATGG
AGTGTATATTTCTGAAGAAAATTTAGAGTCATGAGTGGAAAATTAAGTGTCAAGAAGAGCAGATTGTA
GAATTGATTGAAAAATTTGGTGTGTTGAGGAGGAGCTGAATAGGGTTACAGAGTTGTTTATGGATAATA
AAAATGAACTTGACCAGTGTAAATCTGACCTGCAAAAATAAAACACAAGAAGTGAACCCTCAAAAACA
TTTGCAAGAACTAAATTACAATGTTAAAGAAGAATATATCACATCAGCTTTGAAAGTACTGAGGAG



[View online »](#)

AAACTTCATGATGCTGCCAGCAAGCTGCTTAACACAGTTGAAGAACTACAAAAGATGTATCTGGTCTCC
 ATTCAAACTGGATCGTAAGAAGGCAGTTGACCAACACAATGCAGAAGCTCAGGATATTTTTGGCAAAA
 CCTGAATAGTCTGTTAATAATGGAAGAATTAATTAAGGATGGCAGCTCAAAGCAAAGGCCATGCTA
 GAAGTACATAAGACCTTATTTGGTAATCTGCTGTCTCCAGTGTCTCTGCATTAGATACCATTACTACAG
 TAGCACTTGGATCTCTCACATCTATTCCAGAAAATGTGTCTACTCATGTTTCTCAGATTTTTAATATGAT
 ACTAAAAGAACAATCATTAGCAGCAGAAAGTAAAAGTACTACAGGAATTGATTAATGTACTCAAGACT
 GATCTTTCAAGTTCAGTGAAGATGATTTTATCCCAACTGTGGTGTCTATACTGAAAAATCAATAGTCAAC
 TAAAGCATATTTTCAAGACTTCATTGACAGTGGCCGATAAGATAGAAGATCAAAAAAGGAACTAGATGG
 CTTTCTCAGTATACTGTGTAACAATCTACATGAACTACAAGAAAATACCATTTGTTCTTGGTTGAGTCA
 CAAAAGCAATGTGGAACCTAACTGAAGACCTGAAGACAATAAAGCAGACCCATTCCAGGAACTTTGCA
 AGTTAATGAATCTTTGGACAGAGAGATTCTGTGCTTTGGAGGAAAAGTGTAAAAATACAGAAACCACT
 TAGTAGTGTCCAGGAAAATACAGCAGAAATCTAAGGATATAGTCAACAAAATGACTTTTCACAGTCAA
 AAATTTTGTGCTGATTCTGATGGCTTCTACAGGAACTCAGAAAATTTTAAACGAAGGTACAAAATTTGG
 TTGAAGAATCTGTGAAACACTCTGATAAATCAATGGCAACTGGAAAAAATATCTCAAGAGACTGAACA
 GAGATGTGAATCTCTGAACACAAGAACAGTTTATTTTTCTGAACAGTGGGTATCTTCCTTAAATGAAAGG
 GAACAGGAACTTCAACTTATTGGAGGTTGTAAGCCAATGTTGTGAGGCTTCAAGTTCAGACATCACTG
 AGAAATCAGATGGACGTAAAGGCAGCTCATGAGAAACAGCATAACATTTTTCTTGATCAGATGACTATTGA
 TGAAGATAAATGATAGCACAAAATCTAGAACTTAATGAAACCATAAAAAATGGTTTGACTAAGCTTAAT
 TGCTTTCTGGAACAGGATCTGAAACTGGATATCCCAACAGGTACGACACCACAGAGGAAAAGTTATTTAT
 ACCCATCAACACTGGTAAGAAGTGAACACAGTGAACATCTCCTTGATCAGCTGAAAAGGAAAACAGCTGA
 GCTGTTAATGATGCTAACTGTTTCAGAAAACAACAAAGAAGAGACAATCCGGATGTGGATGTAGAAGAG
 GCAGTTCTGGGCGAGTACTGAAGAACCTCTAAGTCAAGAGCCATCTGTAGATGCTGGTGTGATTGTT
 CATCAATTGGCGGGTCCATTTTCCAGCATAAAAAATCACATGGAAAAGACAAAAGAAAACAGAGGCAT
 TAACACACTGGAGAGGTTAAAGTGAAGAAAACACAGAGCACTTGTTTCAAAAGAGCAGATTACCTCTG
 CGAGCCAGATCAACCTT

ACGCGTACGCGGCCGCTCGAGCAGAACTCATCTCAGAAGAGGATCTGGCAGCAATGATATCCTGGATT
 ACAAGGATGACGACGATAAGGTTTAA

Protein Sequence:

>RC218842 representing NM_004523

Red=Cloning site Green=Tags(s)

MASQPNSSAKKKEEKGNIQVVVRCRPFNLAERKASAHSIVECDPVRKEVSVRTGGLADKSSRKTYTFDM
 VFGASTKQIDVYRSVVCPIILDEVIMGYNCTIFAYGQTGTGKFTMEGERSPNEEYTWEEDPLAGIIPRTL
 HQIFEKLDNNGTEFVSVKSLLEIYNEELFDLLNPSSDVSERLQMFDDPRNKRGVIIKGLLEITVHNKDEV
 YQILEKGAARKRTAATLMNAYSSRSHSVFSVTIHMKEITIDGEEELVKIGKLNLDLAGSENIGRSGAVDK
 RAREAGNINQSLTLGRVITALVERTPHVPYRESKLRILQDSLGGRTSIIATISPASLNLEETLSTL
 EYAHRAKNILNKPEVNQKLTKKALIKYEETEEIERLKRDLAAAREKNGVYI SEENFRVMSGKLTVQEEQIV
 ELIEKIGAVEEELNRVTELFMDNKNELDQCKSDLQNKQTQLETTQKHLQETKLQLVKEEYITSALESTEE
 KLHDAASKLLNTVEETTKDVSGLHSLKDRKKAVDQHNAAEQDIFGKNLNSLFNNMEELIKDGSSKQKAML
 EVHKTFLGNLSSVSALDITTTVALGSLTIPENVSTHVSQIFNMILKEQSLAAESKTVLQELINVLKT
 DLLSSLEMILSPTVVVSIKINSQKHFKTSLTVADKIEDQKKELDGFLSILCNNLHELQENTICSLVES
 QKQCGNLTEDLTIKQTHSQELCKLMNLWTERFCALKEEKENIQKPLSSVQENIQKSKDIVNKMTHFSQ
 KFCADSDGFSQELRNFNQEGTKLVEESVKHSDKLNGLNLEKISQETEQRCESLNTRTVYFSEQWVSSLNER
 EQELHNLLLEVVSQCCEASSSDITEKSDGRKAAHEKQHNIFLDQMTIDEDKLIQAQNELNETIKIGLTKLN
 CFLEQDLKLDIPTGTTTPQRKSYLYPSTLVRTEPREHLLDQLKRRQPELLMMLNCSENNKEETIPDQVVEE
 AVLGQYTEEPLSQEPSVDAGVDCSSIGGVVFFQHKKSHGKDKENRGINTLERSKVEETTEHLVTKSRLPL
 RAQINL

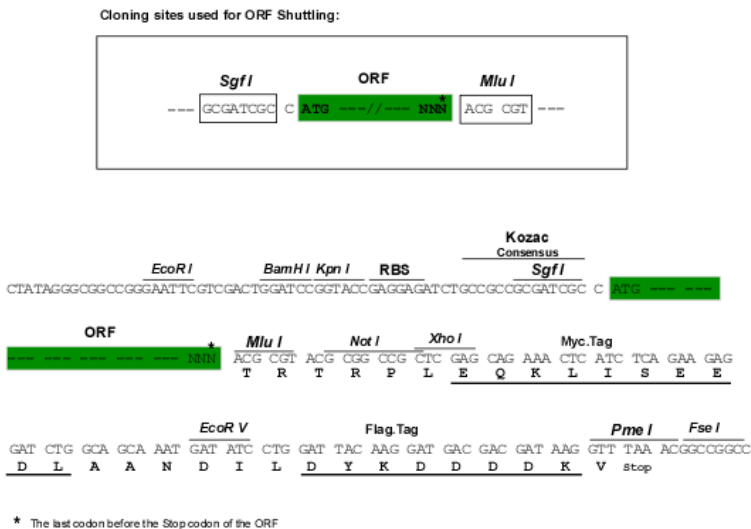
TRTRPLEQKLISEEDLAANDILDYKDDDDKV

Chromatograms:

https://cdn.origene.com/chromatograms/mk6122_g01.zip

Restriction Sites: SgfI-MluI

Cloning Scheme:



ACCN: NM_004523

ORF Size: 3168 bp

OTI Disclaimer: The molecular sequence of this clone aligns with the gene accession number as a point of reference only. However, individual transcript sequences of the same gene can differ through naturally occurring variations (e.g. polymorphisms), each with its own valid existence. This clone is substantially in agreement with the reference, but a complete review of all prevailing variants is recommended prior to use. [More info](#)

OTI Annotation: This clone was engineered to express the complete ORF with an expression tag. Expression varies depending on the nature of the gene.

Components: The ORF clone is ion-exchange column purified and shipped in a 2D barcoded Matrix tube containing 10ug of transfection-ready, dried plasmid DNA (reconstitute with 100 ul of water).

Reconstitution Method:

1. Centrifuge at 5,000xg for 5min.
2. Carefully open the tube and add 100ul of sterile water to dissolve the DNA.
3. Close the tube and incubate for 10 minutes at room temperature.
4. Briefly vortex the tube and then do a quick spin (less than 5000xg) to concentrate the liquid at the bottom.
5. Store the suspended plasmid at -20°C. The DNA is stable for at least one year from date of shipping when stored at -20°C.

Note: Plasmids are not sterile. For experiments where strict sterility is required, filtration with 0.22um filter is required.

RefSeq: [NM_004523.4](#)

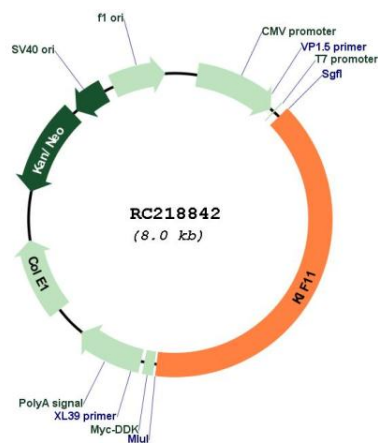
RefSeq Size: 4908 bp

RefSeq ORF: 3171 bp

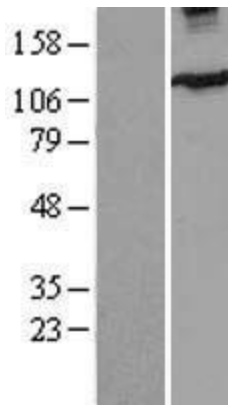
Locus ID: 3832
UniProt ID: [P52732](#)
Cytogenetics: 10q23.33
Domains: kinesin
Protein Families: Druggable Genome
MW: 119 kDa

Gene Summary: This gene encodes a motor protein that belongs to the kinesin-like protein family. Members of this protein family are known to be involved in various kinds of spindle dynamics. The function of this gene product includes chromosome positioning, centrosome separation and establishing a bipolar spindle during cell mitosis. [provided by RefSeq, Jul 2008]

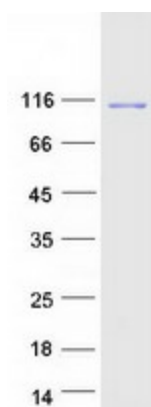
Product images:



Circular map for RC218842



Western blot validation of overexpression lysate (Cat# [LY401441]) using anti-DDK antibody (Cat# [TA50011-100]). Left: Cell lysates from untransfected HEK293T cells; Right: Cell lysates from HEK293T cells transfected with RC218842 using transfection reagent MegaTran 2.0 (Cat# [TT210002]).



Coomassie blue staining of purified KIF11 protein (Cat# [TP318842]). The protein was produced from HEK293T cells transfected with KIF11 cDNA clone (Cat# RC218842) using MegaTran 2.0 (Cat# [TT210002]).