

## Product datasheet for RC218841

### TAZ (NM\_000116) Human Tagged ORF Clone

#### Product data:

Product Type:	Expression Plasmids
Product Name:	TAZ (NM_000116) Human Tagged ORF Clone
Tag:	Myc-DDK
Symbol:	TAZ
Synonyms:	BTHS; CMD3A; EFE; EFE2; G4.5; LVNCX; TAZ; Taz1
Mammalian Cell Selection:	Neomycin
Vector:	pCMV6-Entry (PS100001)
E. coli Selection:	Kanamycin (25 ug/mL)
ORF Nucleotide Sequence:	>RC218841 representing NM_000116 Red=Cloning site Blue=ORF Green=Tags(s)

TTTTGTAATACGACTCACTATAGGGCGGCCGGAATTCGTCGACTGGATCCGGTACCGAGGAGATCTGCC  
GCC**CGATCGC**

ATGCCTCTGCACGTGAAGTGGCCGTTCCCGCGGTGCCGCCGCTCACCTGGACCCTGGCCAGCAGCGTCG  
TCATGGGCTTGGTGGGCACCTACAGCTGCTTCTGGACCAAGTACATGAACCACCTGACCGTGCACAACAG  
GGAGGTGCTGTACGAGCTCATCGAGAAGCGAGGCCCGGCCACGCCCTCATCACCGTGTCCAATCACCAG  
TCCTGCATGGACGACCCTCATCTCTGGGGATCCTGAACTCCGCCACATCTGGAACCTGAAGTTGATGC  
GTTGGACCCTGCAGCTGCAGACATCTGCTTACCAAGGAGCTACACTCCCACTTCTTCAGCTTGGGCAA  
GTGTGTGCCTGTGTGCCGAGGAGCAGAATTTTCCAAGCAGAGAATGAGGGGAAAGGTGTTCTAGACACA  
GGCAGGCACATGCCAGGTGCTGGAAAAAGAAGAGAGAAAGGAGATGGCGTCTACCAGAAGGGGATGGACT  
TCATTTTGGAGAAGCTCAACCATGGGGACTGGGTGCATATCTTCCAGAAAGGAAAGTGAACATGAGTTC  
CGAATTCCTGCGTTTCAAGTGGGGAATCGGGCGCTGATTGCTGAGTGTCTCAACCCCATCATCCTG  
CCCCTGTGGCATGTGGAATGAATGACGTCCTTCTAACAGTCCGCCCTACTTCCCCGCTTTGGACAGA  
AAATCACTGTGCTGATCGGGAAGCCCTTCAGTGCCTGCCTGTACTCGAGCGGCTCCGGGCGGAGAACAA  
GTCGGCTGTGGAGATGCGGAAAGCCCTGACGGACTTCATTCAAGAGGAATTCAGCATCTGAAGACTCAG  
GCAGAGCAGCTCCACAACCACCTCCAGCCTGGGAGA

**ACGCGT**ACGCGGCCGCTCGAGCAGAACTCATCTCAGAAGAGGATCTGGCAGCAAATGATATCCTGGATT  
ACAAGGATGACGACGATAAGGTTTAA


[View online »](#)

**Protein Sequence:** >RC218841 representing NM\_000116  
 Red=Cloning site Green=Tags(s)

MPLHVWPFPAVPPLTWTLASSVVMGLVGTYSFVTKYMNHLTVHNREVLIELKRGPATPLITVSNHQ  
 SCMDPHLWGILKLRIWNLKLMRWTPAAADICFTKELHSHFFSLGKCVPCRGAEFFQAENEGKGVLDT  
 GRHMPGAGKRREKGDGVYQKGMDFILEKLNHGDWVHIFPEGKVNMSSEFLRFKWIIGRLIAEHLNPIIL  
 PLWHVGMNDVLPNSPPYFPRFGQKITVLIGKPFALPVLRLAENKSAVEMRKALTDIFIQEEFQHLKTQ  
 AEQLHNHLQPGR

TRTRPLEQKLISEEDLAANDILDYKDDDDKV

**Chromatograms:** [https://cdn.origene.com/chromatograms/mg2663\\_c05.zip](https://cdn.origene.com/chromatograms/mg2663_c05.zip)

**Restriction Sites:** SgfI-MluI

**Cloning Scheme:**



**ACCN:** NM\_000116

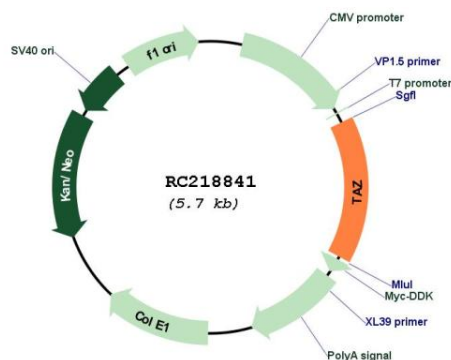
**ORF Size:** 876 bp

**OTI Disclaimer:** Due to the inherent nature of this plasmid, standard methods to replicate additional amounts of DNA in E. coli are highly likely to result in mutations and/or rearrangements. Therefore, OriGene does not guarantee the capability to replicate this plasmid DNA. Additional amounts of DNA can be purchased from OriGene with batch-specific, full-sequence verification at a reduced cost. Please contact our customer care team at [custsupport@origene.com](mailto:custsupport@origene.com) or by calling 301.340.3188 option 3 for pricing and delivery.

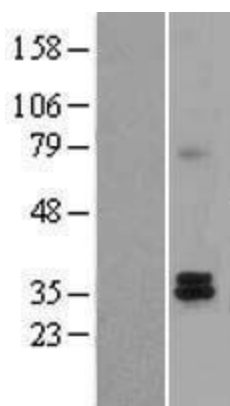
The molecular sequence of this clone aligns with the gene accession number as a point of reference only. However, individual transcript sequences of the same gene can differ through naturally occurring variations (e.g. polymorphisms), each with its own valid existence. This clone is substantially in agreement with the reference, but a complete review of all prevailing variants is recommended prior to use. [More info](#)

<b>OTI Annotation:</b>	This clone was engineered to express the complete ORF with an expression tag. Expression varies depending on the nature of the gene.
<b>Components:</b>	The ORF clone is ion-exchange column purified and shipped in a 2D barcoded Matrix tube containing 10ug of transfection-ready, dried plasmid DNA (reconstitute with 100 ul of water).
<b>Reconstitution Method:</b>	<ol style="list-style-type: none"> <li>1. Centrifuge at 5,000xg for 5min.</li> <li>2. Carefully open the tube and add 100ul of sterile water to dissolve the DNA.</li> <li>3. Close the tube and incubate for 10 minutes at room temperature.</li> <li>4. Briefly vortex the tube and then do a quick spin (less than 5000xg) to concentrate the liquid at the bottom.</li> <li>5. Store the suspended plasmid at -20°C. The DNA is stable for at least one year from date of shipping when stored at -20°C.</li> </ol>
<b>Note:</b>	Plasmids are not sterile. For experiments where strict sterility is required, filtration with 0.22um filter is required.
<b>RefSeq:</b>	<a href="#">NM_000116.5</a>
<b>RefSeq Size:</b>	1904 bp
<b>RefSeq ORF:</b>	879 bp
<b>Locus ID:</b>	6901
<b>UniProt ID:</b>	<a href="#">Q16635</a>
<b>Cytogenetics:</b>	Xq28
<b>Domains:</b>	Acyltransferase
<b>Protein Families:</b>	ES Cell Differentiation/IPS, Transmembrane
<b>MW:</b>	33.3 kDa
<b>Gene Summary:</b>	This gene encodes a protein that is expressed at high levels in cardiac and skeletal muscle. Mutations in this gene have been associated with a number of clinical disorders including Barth syndrome, dilated cardiomyopathy (DCM), hypertrophic DCM, endocardial fibroelastosis, and left ventricular noncompaction (LVNC). Multiple transcript variants encoding different isoforms have been described. A long form and a short form of each of these isoforms is produced; the short form lacks a hydrophobic leader sequence and may exist as a cytoplasmic protein rather than being membrane-bound. Other alternatively spliced transcripts have been described but the full-length nature of all these transcripts is not known. [provided by RefSeq, Jul 2008]

## Product images:



Circular map for RC218841



Western blot validation of overexpression lysate (Cat# [LY400038]) using anti-DDK antibody (Cat# [TA50011-100]). Left: Cell lysates from untransfected HEK293T cells; Right: Cell lysates from HEK293T cells transfected with RC218841 using transfection reagent MegaTran 2.0 (Cat# [TT210002]).