

## Product datasheet for **RC218826**

### WDR20 (NM\_181291) Human Tagged ORF Clone

#### Product data:

Product Type:	Expression Plasmids
Product Name:	WDR20 (NM_181291) Human Tagged ORF Clone
Tag:	Myc-DDK
Symbol:	WDR20
Synonyms:	Bun107; DMR
Mammalian Cell Selection:	Neomycin
Vector:	pCMV6-Entry (PS100001)
E. coli Selection:	Kanamycin (25 ug/mL)



[View online »](#)

**ORF Nucleotide Sequence:**

>RC218826 representing NM\_181291  
 Red=Cloning site Blue=ORF Green=Tags(s)

TTTTGTAATACGACTCACTATAGGGCGGCCGGAATTCGTCGACTGGATCCGGTACCGAGGAGATCTGCC  
 GCC**CGGATCGCC**

ATGGCGACGGAGGAGGAGGAAGGAGATGAACGAGATTAAGACCAATTCACCACCCGGGAAGGTCTGT  
 ACAAGCTGCTGCCGCACTCGGAGTACAGCCGCCCAACCGGGTGCCTTCAACTCGCAGGGATCCAACCC  
 TGTCGCCGTCTCCTTCGTAACCTCAACGACCAGTCTGGCAACGCGACCGCCTCTGCTCAATGTGGGC  
 CGGGAGCTGTACTIONTCTATCTACAAGGGGTCCGCAAGGCTGCTGACTTGAGTAAACCAATAGATAAAA  
 GGATATACAAAGGAACACAGCCTACTTGTGATGACTTCAACCACCTAACAGCCACAGCAGAAAGTGTCTC  
 TCTCTAGTGGGCTTTCCGACGGCCAAGTCCAGCTTATAGACCAATCAAAAAAGAACTAGCAAACTT  
 TTTAATGAGGAAAGACTAATAGACAAGTACGAGTTACCTGTGCAATGGGTTCCCGGTTCCGAAAGCC  
 TTTTCTAGTAGCCACTCGAGTGGGAACATGACTTATAAATGTGGAGCACACTTGTGGCACCACAGC  
 CCCCCACTACCAGCTTCTGAAGCAGGGAGAGAGCTTTGCCGTGCACACTTGAAGAGCAAAATCCACGAGG  
 AACCTCTCCTTAAGTGGACGGTGGGCGAGGGGCCCTCAACGAGTTTGCCTTCCCCAGATGGCAAGT  
 TCTTAGCGTGCCTGAGCCAGGACGGGTTTCTGCGGGTGTCAACTTTGACTCAGTGGAGCTGCACGGTAC  
 GATGAAAAGCTACTTTGGGGGCTTGTGTGTGTGTGTGGAGCCCGGATGGCAAGTACATCGTGACAGGT  
 GGGGAGGACGACTTGGTACAGTCTGGTCTTTGTAGACTGCCGAGTAATAGCCAGAGGCCACGGGCACA  
 AGTCTGGGTGAGTGTGTAGCGTTTGACCCTTATACCACTAGTGTAGAAGAAGGTGACCCTATGGAGTT  
 TAGTGGCAGCGATGAGGACTTCCAAGACCTTCTCATTGTCAGAGATCGAGCAAAATAGTACACAGTCC  
 AGGCTCTCAAACGGAACCTACAGACAGCCGCCCGTAAGTGTACGTATCGGTTGGTCCGTGGGCC  
 AGGACACACAGCTCTGTTTATGGACCTTACAGAAGATATCCTTTCCCTCACCAACCCCTCAAGAGC  
 AAGGACACACACAAATGTCATGAATGCCAGAGTCCCTCCTGCTGGAAGCAATGGGAACAGTGTACAAACA  
 CCCGGAACTCTGTGCCCTCCTCTGCCACGGTCCAACAGCCTTCCACATTCAGCAGTCTCAAATGCTG  
 GCAGCAAAAGCAGTGTGATGGACGGGGCCATTGCTTCTGGGGTACAGAAATTTGCAACACTTTCACTACA  
 TGACCGGAAGGAGAGGCACCACGAGAAAGATCACAAAGCAAAATCATAGCATGGGACACATTTCTAGCAAG  
 AGCAGTGACAACTGAATCTAGTTACCAAAACCAAAACGGACCCTGCTAAAACCTGGGAACGCCCTGT  
 GTCCTCGAATGGAAGATGTTCCCTGTTAGAGCCGCTGATATGAAAAAGATAGCACATGAGAGACTGAC  
 TGTAATAATTTCTGAAGACTGTATAGTCACTGCTTGTGAGGAGGATTTATTTGCATGGGGAAGG  
 CCTGGTAAAGTGGGCTCATTGTGATCCCAAGCCAGGCCAGTTCTCCAGTGGAACTGTAGTG

**ACGCGT**ACGCGGCCGCTCGAGCAGAACTCATCTCAGAAGAGGATCTGGCAGCAAATGATATCCTGGATT  
 ACAAGGATGACGACGATAAGGTTTAA

**Protein Sequence:**

>RC218826 representing NM\_181291  
 Red=Cloning site Green=Tags(s)

MATEGGGKEMNEIKTQFTTREGLYKLLPHSEYSRPNRVFNSQGSNPVRSVFNLNDQSGNGDRLCFNVG  
 RELYFYIYKGVKAAADLSKPIDKRIYKGTQPTCHDFNHLTATAESVLLVGFSAQVQLIDPIKETS  
 FNEERLIDKSRVTCVKWVPGSESLFLVAHSSGNMYLYNVEHTCGTTAPHYQLLKQGESFAVHTCKSKSTR  
 NPLLKWTVGEALNEFAFSPDGKFLACVSQDGLRVFNFDSELHGTMKSYFGLLCVCWSPDGKYIVTG  
 GEDDLVTWVSFVDCRVIARGHGHKSWSVVAFDPYTTVEEGDPMFSGSDEDFQDLLHFGRDRANSTQS  
 RLSKRNSTSRPVSVTYRFGSVGQDTQLCLWDLTEDILFPHQPLSRARHTNMVNATSPAGSNGNSVTT  
 PGNSVPPPLPRNSLPHSAVSNAGSKSSVMDGAIASGVSKFATLSLHDKERHHEKDHKRNHSMGHISSK  
 SSDKLNLVTKTKTDPAKTLGTPLCPRMEDVPLLEPLICKKIAHERLTVLIFLEDCIVTACQEGFICTWGR  
 PGKVGSLSSPSQASSPGGTVV

**TR**TRPLEQKLISEEDLAANDILDYKDDDDKV

**Chromatograms:**

[https://cdn.origene.com/chromatograms/mk8068\\_c09.zip](https://cdn.origene.com/chromatograms/mk8068_c09.zip)

**Restriction Sites:**

Sgfl-Mlul

**Cloning Scheme:**


**ACCN:** NM\_181291

**ORF Size:** 1743 bp

**OTI Disclaimer:** The molecular sequence of this clone aligns with the gene accession number as a point of reference only. However, individual transcript sequences of the same gene can differ through naturally occurring variations (e.g. polymorphisms), each with its own valid existence. This clone is substantially in agreement with the reference, but a complete review of all prevailing variants is recommended prior to use. [More info](#)

**OTI Annotation:** This clone was engineered to express the complete ORF with an expression tag. Expression varies depending on the nature of the gene.

**Components:** The ORF clone is ion-exchange column purified and shipped in a 2D barcoded Matrix tube containing 10ug of transfection-ready, dried plasmid DNA (reconstitute with 100 ul of water).

- Reconstitution Method:**
1. Centrifuge at 5,000xg for 5min.
  2. Carefully open the tube and add 100ul of sterile water to dissolve the DNA.
  3. Close the tube and incubate for 10 minutes at room temperature.
  4. Briefly vortex the tube and then do a quick spin (less than 5000xg) to concentrate the liquid at the bottom.
  5. Store the suspended plasmid at -20°C. The DNA is stable for at least one year from date of shipping when stored at -20°C.

**RefSeq:** [NM\\_181291.3](#)

**RefSeq Size:** 2597 bp

**RefSeq ORF:** 1746 bp

**Locus ID:** 91833

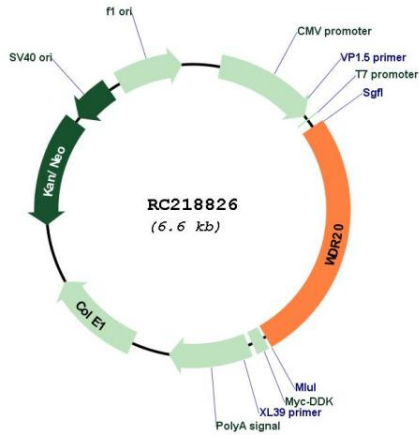
**UniProt ID:** [Q8TBZ3](#)

**Cytogenetics:** 14q32.31

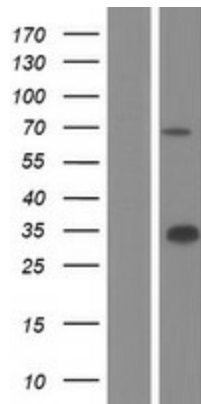
MW: 63.7 kDa

Gene Summary: This gene encodes a WD repeat-containing protein that functions to preserve and regulate the activity of the USP12-UAF1 deubiquitinating enzyme complex. Multiple alternatively spliced transcript variants have been found for this gene. [provided by RefSeq, Jun 2011]

Product images:



Circular map for RC218826



Western blot validation of overexpression lysate (Cat# [LY405815]) using anti-DDK antibody (Cat# [TA50011-100]). Left: Cell lysates from untransfected HEK293T cells; Right: Cell lysates from HEK293T cells transfected with RC218826 using transfection reagent MegaTran 2.0 (Cat# [TT210002]).