

## Product datasheet for **RC218824**

### **TOX3 (NM\_001080430) Human Tagged ORF Clone**

#### **Product data:**

Product Type:	Expression Plasmids
Product Name:	TOX3 (NM_001080430) Human Tagged ORF Clone
Tag:	Myc-DDK
Symbol:	TOX3
Synonyms:	CAGF9; TNRC9
Mammalian Cell Selection:	Neomycin
Vector:	pCMV6-Entry (PS100001)
E. coli Selection:	Kanamycin (25 ug/mL)



[View online »](#)

**ORF Nucleotide Sequence:**

>RC218824 representing NM\_001080430  
 Red=Cloning site Blue=ORF Green=Tags(s)

TTTTGTAATACGACTCACTATAGGGCGGCCGGGAATTCGTCGACTGGATCCGGTACCGAGGAGATCTGCC  
 GCC**CGCATCGCC**

ATGGATGTGAGGTTCTACCCCGCGCGCCGGGGACCCTGCCAGCCTGGACTTCGCGCAGTGCCTGGGGT  
 ACTACGGCTACAGCAAGTTTGGAAATAATAAATACTATATGAATATGGCTGAGGGCAACAATGCGTTCTT  
 CGCTGCCAGTGAGCAGACATTCCACACACCAAGCCTTGGGGACGAGGAATTCGAAATTCACCAATCACG  
 CCTCTCCAGAGTCAGACCCTGCCCTAGGCATGCCGGATGTAAGTCTACCTTTCAAGCCCTCAGCGATC  
 CATTGCCCTCCAGGGAAGTGAATTCACACCCAGTTTCCCCTCAAAGCCTGGACCTCCCTTCCATTAC  
 AATCTCAAGAAATCTCGTGAACAAGATGGCGTCTTCATAGCAGTGGGTTGCATATGGATCAGAGCCAC  
 ACACAAGTGTCCAGTACCGGCAGGATCCCTCCCTGATCATGCGGTCCATCGTCCACATGACCGATGCTG  
 CGCGTTCTGGGGTCATGCCTCCTGCCAGCTCACCACCATCAACCAGTCTCAGCTCAGCGCCAGTTGGG  
 GTTGAATTTGGGAGGTGCCAGTATGCCTCACACATCTCCTTACCTCCAGCAAGCAAATCAGCCACTCCC  
 TCCCCTCCAGCTCCATCAATGAAGAGGATGCTGATGAAGCCAACAGAGCCATTGGAGAGAAAAGAGCTG  
 CTCAGACTCTGGCAAGAAGCCCAAGACTCCAAAGAAAAAGAAAAGAAAAGATCCCAATGAGCCACAGAA  
 GCCAGTGTGAGCATATGCCCTGTTTTTCAGAGACACACAGGCTGCAATTAAGGTCAAACCCCAATGCA  
 ACCTTTGGAGAGGTCTCAAAAATGTAGCATCTATGTGGGACAGCCTTGGAGAAGAACAAAAGCAGGTAT  
 ATAAAAGGAAAACAGAAGCTGCCAAAAAGAATACCTGAAGGCCCTGGCGGCATACAGGGCCAGCCTCGT  
 TTCTAAGGCTGCTGCTGAGTCAGCAGAAGCCAGACCATCCGTTCTGTTCCAGCAGACCCTGGCGTCGACC  
 AATCTAACATCTCTCTCTCTCAACTCCACTGTCTCAACATGGAACAGTGTGAGCATCACCTCAGAT  
 CTCTCCAGCAATCCCTCCTAGTCAATCGCTCCCAACCCCTTAACCATGAGACTCCCCATGAACCCAGAT  
 TGTCCATCAGTACCATTGCGACCAACATGCCCTCGAACATTGGGGCTCCACTGATAAGCTCCATGGGA  
 ACGACCATGGTTGGCTCAGCACCTCCACCAAGTGAAGTCTTCCGGTCAAACCCAGCAGCATCAGATGC  
 AATTGCAGCAGCAGCAGCAGCAACAACAGATGCAACAGATGAGCAGCAGCAACTCCAGCAGCA  
 CCAAATGCATCAGCAAATCCAGCAGCAGATGAGCAGCAGCATTCCAGCACCACATGAGCAGCACCTG  
 CAGCAGCAGCAGCAGCATCTCCAGCAGCAAATTAACAGCAGCTGAGCAGCAGCTGAGCAGCAGCC  
 TCCAGTGCAGCAGCTGCAACACATGAGCAGCAGTCTCAGCCTTCTCCTCGGCAGCACTCCCCTGTCGC  
 CTCTCAGATAACATCCCCATCCCTGCCATCGGGAGCCCCAGCCAGCCTCTCAGCAGCACCAGTCGCAA  
 ATACAGTCTCAGACACAGACTCAAGTATTATCGCAGGCTATACCTACAATATGTGAATCAAAGTGTAA  
 TGAATCTGGGACATAC

**ACGCGT**ACGCGGCCGCTCGAGCAGAACTCATCTCAGAAGAGGATCTGGCAGCAAATGATATCCTGGATT  
 ACAAGGATGACGACGATAAGGTTTAA

**Protein Sequence:**

>RC218824 representing NM\_001080430  
 Red=Cloning site Green=Tags(s)

MDVRFYPAAGDPASLDFAQCLGYGYYSKFGNNNNYMNMAEANNAFFAASEQTFHTPSLGDDEFEIPPIT  
 PPESDPALGMPDVLLPFQALSDPLPSQSEFTPQFPPQSLDLPISITISRNLEVDQVLHSSGLHMDQSH  
 TQVSQYRQDPSLIMRSIVHMTDAARSGVMPPAQLTTINQSQLSAQLGLNLGGASMPHTSPSPASKSATP  
 SPSSSINEEDAANRAIGEKRAAPDSGKKPKTPKPKPKPKPKPKPKPKPKPKPKPKPKPKPKPKPKPKPK  
 TFGEVSKIVASMWDSLGEQKQVYKRKTEAAKKEYLKAALAYRASLVSKAAEAQAQTIRSVQQLAST  
 NLTSSLLNTPLSQHGTVSASPQTLQQLPRSIAPKPLTMRLPMNQIVTSVTIAANMPSNIGAPLISSMG  
 TTMVGSAPSTQVSPSVQTQQHQMLQQQQQQQQQQQQQQQQQQQQQQHQMHQQIQQQMQQQHFQHHMQHL  
 QQQQQHLQQQINQQQLQQQLQQRLQLQLQHMHQSQSPSPRQHSPPVASSQITSPIPAIGSPQASQQHQSQ  
 IQSQTQTQVLSQAIPITICESNCLMNPPTY

**TR**TRPLEQKLISEEDLAANDILDYKDDDDKV

**Chromatograms:**

[https://cdn.origene.com/chromatograms/mg3115\\_c01.zip](https://cdn.origene.com/chromatograms/mg3115_c01.zip)

**Restriction Sites:** SgfI-MluI

**Cloning Scheme:**



**ACCN:** NM\_001080430

**ORF Size:** 1767 bp

**OTI Disclaimer:** The molecular sequence of this clone aligns with the gene accession number as a point of reference only. However, individual transcript sequences of the same gene can differ through naturally occurring variations (e.g. polymorphisms), each with its own valid existence. This clone is substantially in agreement with the reference, but a complete review of all prevailing variants is recommended prior to use. [More info](#)

**OTI Annotation:** This clone was engineered to express the complete ORF with an expression tag. Expression varies depending on the nature of the gene.

**Components:** The ORF clone is ion-exchange column purified and shipped in a 2D barcoded Matrix tube containing 10ug of transfection-ready, dried plasmid DNA (reconstitute with 100 ul of water).

- Reconstitution Method:**
1. Centrifuge at 5,000xg for 5min.
  2. Carefully open the tube and add 100ul of sterile water to dissolve the DNA.
  3. Close the tube and incubate for 10 minutes at room temperature.
  4. Briefly vortex the tube and then do a quick spin (less than 5000xg) to concentrate the liquid at the bottom.
  5. Store the suspended plasmid at -20°C. The DNA is stable for at least one year from date of shipping when stored at -20°C.

**RefSeq:** [NM\\_001080430.1](#), [NP\\_001073899.1](#)

**RefSeq Size:** 2849 bp

**RefSeq ORF:** 1731 bp

**Locus ID:** 27324

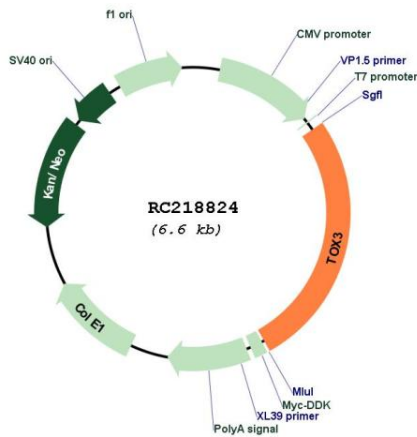
UniProt ID: [O15405](#)

Cytogenetics: 16q12.1

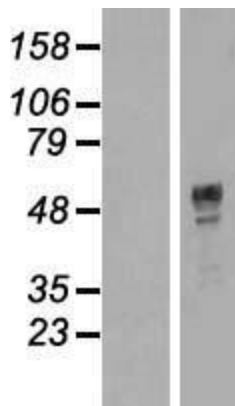
MW: 64.7 kDa

**Gene Summary:** The protein encoded by this gene contains an HMG-box, indicating that it may be involved in bending and unwinding of DNA and alteration of chromatin structure. The C-terminus of the encoded protein is glutamine-rich due to CAG repeats in the coding sequence. A minor allele of this gene has been implicated in an elevated risk of breast cancer. Two transcript variants encoding different isoforms have been found for this gene.[provided by RefSeq, Apr 2009]

**Product images:**



Circular map for RC218824



Western blot validation of overexpression lysate (Cat# [LY421647]) using anti-DDK antibody (Cat# [TA50011-100]). Left: Cell lysates from untransfected HEK293T cells; Right: Cell lysates from HEK293T cells transfected with RC218824 using transfection reagent MegaTran 2.0 (Cat# [TT210002]).