

Product datasheet for RC218818

JAML (NM_001098526) Human Tagged ORF Clone

Product data:

Product Type:	Expression Plasmids
Product Name:	JAML (NM_001098526) Human Tagged ORF Clone
Tag:	Myc-DDK
Symbol:	JAML
Synonyms:	AMICA; AMICA1; CREA7-1; CREA7-4; Gm638
Mammalian Cell Selection:	Neomycin
Vector:	pCMV6-Entry (PS100001)
E. coli Selection:	Kanamycin (25 ug/mL)
ORF Nucleotide Sequence:	>RC218818 representing NM_001098526 Red=Cloning site Blue=ORF Green=Tags(s)

TTTTGTAATACGACTCACTATAGGGCGCCGGGAATTCGTCGACTGGATCCGGTACCGAGGAGATCTGCC
GCC**CGGATCGCC**

ATGTTTTGCCCACTGAACTCATCTGCTGCCAGTGTTACTGGATTATTCCTTGGGCCTGAATGACTTGA
ATGTTTCCCGCCTGAGCTAACAGTCCATGTGGGTGATTAGCTCTGATGGGATGTGTTTTCCAGAGCAC
AGAAGACAAATGTATATCAAGATAGACTGGACTCTGTACCAGGAGAGCAGCCAAGGACGAATATGTG
CTATACTATTACTCCAATCTCAGTGTGCCTATTGGCGCTTCCAGAACCCTGACTTGTATGGGGACA
TCTTATGCAATGATGGCTCTCTCCTGCTCCAAGATGTGCAAGAGGCTGACCAGGGAACCTATATCTGTGA
AATCCGCCTCAAAGGGGAGAGCCAGGTGTTCAAGAAGGCGGTGGTACTGCATGTGCTTCCAGAGGAGCCC
AAAGAGCTCATGGTCCATGTGGGTGGATTGATTAGATGGGATGTGTTTTCCAGAGCACAGAAGTAAAC
ACGTGACCAAGGTAGAATGGATATTTTCAGGACGGCGCGCAAAGGAGGAGATTGTATTTTCGTTACTACCA
CAAACCTCAGGATGTCTGTGGAGTACTCCAGAGCTGGGGCCACTCCAGAATCGTGTGAACCTGGTGGG
GACATTTTCCGCAATGACGGTCCATCATGCTTCAAGGAGTGAGGGAGTCAGATGGAGGAAACTACACCT
GCAGTATCCACCTAGGGAACCTGGTGTCAAGAAAACATTGTGCTGCATGTCAGCCCGGAAGAGCCTCG
AACACTGGTGACCCCGCAGCCCTGAGGCTCTGGTCTTGGGTGGTAATCAGTTGGTGATCATTGTGGGA
ATTGCTGTGCCACAATCCTGCTCCCTGTTCTGATATTGATCGTGAAGAAGACCTGTGGAAATAAGA
GTTGAGTGAATTCTACAGTCTTGGTGAAGAACACGGAAGACTAATCCAGAGATAAAAGAAAACCTG
CCATTTTGAAGATGTGAAGGGGAGAAACACATTTACTCCCAATAATTGTACGGGAGGTGATCGAGGAA
GAAGAACCAAGTAAAAATCAGAGGCCACCTACATGACCATGCACCCAGTTTGGCCTTCTCTGAGGTGAG
ATCGGAACAACCTCACTTGAAAAAAGTCAGGTGGGGAAATGCCAAAAACACAGCAAGCCTTT

ACGGTACGGCGCCGCTCGAGCAGAACTCATCTCAGAAGAGGATCTGGCAGCAATGATATCTGGATT
ACAAGGATGACGACGATAAGGTTTAA



[View online »](#)

Protein Sequence: >RC218818 representing NM_001098526
Red=Cloning site Green=Tags(s)

MFCPLKLILLPVLLDYSLGLNDLNVSPPELTVHVGDSALMGCVFQSTEDKCIFKIDWTLSPGEHAKDEYV
 LYYNSLVPIGRFQNRVHLMGDILCNDGSLLLQDVQEADQGTyceIRLKGESQVFKAVVLHVLPEEP
 KELMVHVGLLIQMGCVFQSTEVKHVTKVEWIFSGRRAKEEIVFRYYHKLMSVEYSQSWGHFQNRVNLVG
 DIFRNDGSIMLQGVRESDGGNYTCSIHLGNLVFKKTIIVLHVSPPEPRTLVTAAALRPLVLGGNQLVIIVG
 IVCATILLPLVILIVKKTTCGNKSSVNSTVYLVKNTKKTNPETKEKPCFHERCEGEKHIYSPIIVREVIEE
 EEPSEKSEATYMTMHPVWPSLRSDRNSLEKKS GGGMPKTQQAF

TRTRPLEQKLISEEDLAANDILDYKDDDDKV

Chromatograms: https://cdn.origene.com/chromatograms/mg3462_g01.zip

Restriction Sites: SgfI-MluI

Cloning Scheme:



* The last codon before the Stop codon of the ORF

ACCN: NM_001098526

ORF Size: 1182 bp

OTI Disclaimer: The molecular sequence of this clone aligns with the gene accession number as a point of reference only. However, individual transcript sequences of the same gene can differ through naturally occurring variations (e.g. polymorphisms), each with its own valid existence. This clone is substantially in agreement with the reference, but a complete review of all prevailing variants is recommended prior to use. [More info](#)

OTI Annotation: This clone was engineered to express the complete ORF with an expression tag. Expression varies depending on the nature of the gene.

Components: The ORF clone is ion-exchange column purified and shipped in a 2D barcoded Matrix tube containing 10ug of transfection-ready, dried plasmid DNA (reconstitute with 100 ul of water).

Reconstitution Method:

1. Centrifuge at 5,000xg for 5min.
2. Carefully open the tube and add 100ul of sterile water to dissolve the DNA.
3. Close the tube and incubate for 10 minutes at room temperature.
4. Briefly vortex the tube and then do a quick spin (less than 5000xg) to concentrate the liquid at the bottom.
5. Store the suspended plasmid at -20°C. The DNA is stable for at least one year from date of shipping when stored at -20°C.

Note: Plasmids are not sterile. For experiments where strict sterility is required, filtration with 0.22um filter is required.

RefSeq: [NM_001098526.2](#)

RefSeq Size: 1957 bp

RefSeq ORF: 1185 bp

Locus ID: 120425

UniProt ID: [Q86YT9](#)

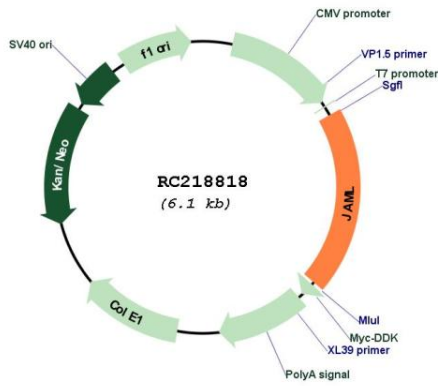
Cytogenetics: 11q23.3

Protein Families: Transmembrane

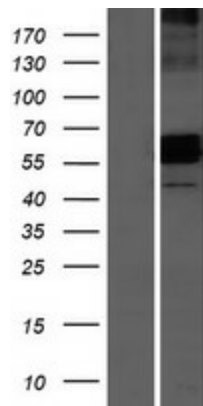
MW: 44.2 kDa

Gene Summary: Transmembrane protein of the plasma membrane of leukocytes that control their migration and activation through interaction with CXADR, a plasma membrane receptor found on adjacent epithelial and endothelial cells. The interaction between both receptors mediates the activation of gamma-delta T-cells, a subpopulation of T-cells residing in epithelia and involved in tissue homeostasis and repair. Upon epithelial CXADR-binding, JAML induces downstream cell signaling events in gamma-delta T-cells through PI3-kinase and MAP kinases. It results in proliferation and production of cytokines and growth factors by T-cells that in turn stimulate epithelial tissues repair. It also controls the transmigration of leukocytes within epithelial and endothelial tissues through adhesive interactions with epithelial and endothelial CXADR.[UniProtKB/Swiss-Prot Function]

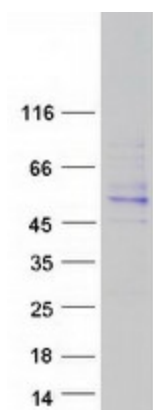
Product images:



Circular map for RC218818



Western blot validation of overexpression lysate (Cat# [LY420624]) using anti-DDK antibody (Cat# [TA50011-100]). Left: Cell lysates from untransfected HEK293T cells; Right: Cell lysates from HEK293T cells transfected with RC218818 using transfection reagent MegaTran 2.0 (Cat# [TT210002]).



Coomassie blue staining of purified JAML protein (Cat# [TP318818]). The protein was produced from HEK293T cells transfected with JAML cDNA clone (Cat# RC218818) using MegaTran 2.0 (Cat# [TT210002]).