

Product datasheet for RC218817

MYO5A (NM_000259) Human Tagged ORF Clone

Product data:

Product Type:	Expression Plasmids
Product Name:	MYO5A (NM_000259) Human Tagged ORF Clone
Tag:	Myc-DDK
Symbol:	MYO5A
Synonyms:	GS1; MYH12; MYO5; MYR12
Mammalian Cell Selection:	Neomycin
Vector:	pCMV6-AC-Myc-DDK (PS100007)
E. coli Selection:	Ampicillin (100 ug/mL)
ORF Nucleotide Sequence:	>RC218817 representing NM_000259. Blue=ORF Red=Cloning site Green=Tag(s)

```
GCTCGTTTGTAGTGAACCGTCAGAATTTTGTAAACGACTCACTATAGGGCGGCCGGGAATTCGTCGACTG
GATCCGGTACCGAGGAGATCTGCCGCCGCGATCGCC
ATGGCTGCGTCCGAGCTCTACACAAAGTTTGCCAGGGTTTGGATACCTGATCCAGAGGAAGTCTGGAAAG
TCAGCAGAGCTGCTCAAAGATTATAAGCCAGGAGATAAAGTCCTCCTGCTTCACCTCGAGGAAGGAAAG
GATTTGGAATACCATCTAGATCCAAAGACCAAGGAGCTGCCTCACTTACGAAATCCTGACATACTTGT
GGTGAAAATGACCTCACAGCCCTCAGCTATCTTCATGAGCCTGCTGTGCTCCATAATCTCAGAGTCCGC
TTTATTGATTCCAACTTATTTATACGTATTGTGGTATAGTCCTAGTAGCTATAAATCCCTATGAACAG
CTGCCATTTTATGGAGAAGATATTATTAATGCATACAGTGGTCAGAACATGGGTGATATGGATCCACAT
ATCTTTGCAGTAGCTGAAGAAGCTTACAAGCAAATGGCCAGAGATGAACGAAATCAGTCCATCATCGTA
AGTGGAGAGTCTGGGGCAGGAAAAACAGTCTCAGCTAAGTATGCCATGCGATACTTTGCAACTGTGAGT
GGTTCTGCCAGTGAAGCAATGTGGAGGAAAAGGCTTTCAGCTCCAAACCCCATCATGGAGTCCATTGGA
AATGCTAAAACAACCGAATGATAATAGCAGCCGTTTGGGAAGTATATTGAGATTGGTTTTGATAAG
AGATATCGAATCATTGGTGCCAATATGAGAAGTATCTTTTAGAGAAATCCAGAGTGGTATTCCAGGCA
GAAGAGGAGAGAACTATCATATCTTCTATCAGCTTTGTGCCCTCAGCAAAGTTACCTGAATTTAAAATG
CTACGATTAGGAAATGCAGATAACTTTAATTACACAAAACAAGGAGGCAGTCTGTGATTGAAGGAGTG
GATGATGCAAAGGAGATGGCACATACTAGGCAGGCTGCCTTTGCTAGGAATTAGTGAATCTCATCAA
ATGGGAATTTCCGAATACTTGGCTGGCATCCTTCACTTAGGCAATGTTGGATTTACATCCCGAGATGCA
GACAGTGCACAATACCTCCCAAGCATGAACCTCTCTGCATCTTCTGTGACCTCATGGGTGTGGACTAT
GAGGAGATGTGCTACTGGCTCTGCCATCGGAAACTGGCTACTGCCACAGAGACATACATCAAGCCCATC
TCCAAGCTGCAGGCCACGAATGCCCGCATGCTTTGGCCAAACACATCTATGCCAAGCTCTTTAACTGG
ATTGTAGATAATGTCAATCAGGCTCTCCATTCTGCTGTCAAACAGCACTTTTTATTGGTGTGCTAGAC
ATTTACGGATTTGAAACATTTGAGATAAATAGTTTTGAACAGTTTTGCATAAATTATGCAAATGAAAAA
CTACAGCAACAATCAATATGCATGTCTCAAATGGAGCAAGAAGAATATATGAAGGAACAATTTCCA
TGGACACTCATAGATTTTATGATAATCAGCCTTGATTAATCTTATAGAATCAAACACTAGGCATTCTA
```



[View online »](#)

GATTTACTGGATGAGGAATGCAAGATGCCTAAAGGCACAGATGACACCTGGGCCAAAAATTGTACAAC
 ACACATTTGAACAAATGTGCACTCTTTGAAAAGCCTCGTCTATCAAAACAAAGCTTTCATCATCCAACAT
 TTTGCTGACAAAGTGGAAATACCAGTGTGAAGGATTTCTCGAAAAGAATAAAGACACCGTTTTTGAAGAA
 CAAATTAAGTTCTTAAATCAAGCAAGTTTAAGATGCTACCAGAACTATTTCAAGATGATGAGAAGGCC
 ATCAGTCCAACCTCAGCCACCTCCTCAGGGCGCACACCCCTCACACGAACTCCTGCAAAGCCCACAAA
 GGCAGACCAGGCCAAATGGCCAAAGAGCACAAGAAAACAGTGGGGCATCAGTTCAGAAACTCCCTGCAC
 CTGCTTATGGAGACACTCAATGCCACTACCCCTCACTATGTGCGTGTATCAAGCTAATGACTTCAAG
 CTCCTTACAGTTTTGATGAGAAGAGGGCAGTGCAGCAGCTGAGAGCATGTGGTGTCTGGAAACCATC
 CGAATCAGTGCGGCCGTTTTCCCTCACGGTGGACTTACCAAGAATTTTTAGCCGCTACCGTGTCTTA
 ATGAAGCAGAAAGATGTGCTGAGTGACAGAAAGCAAAACATGCAAGAATGTGTTAGAGAACTGATACTG
 GACAAGGACAAAATACCAGTTTGGTAAGACAAAGATCTTTTTCCGTGCCGGTCAAGTGGCCTATCTAGAA
 AAATTGAGAGCTGACAACTGAGAGCTGCCTGCATCCGGATCCAGAAGACCATCCGAGGGTGGCTGCTG
 AGAAAGAAGTACCTACGCATGCGGAAGGCAGCCATCACCATGCAGAGATACGTGCGGGGCTACCAGGCC
 CGATGCTATGCTAAGTTTCTGCGCAGAACCAAGGCAGCAACCATCATTCAAAAGTACTGGCGCATGTAT
 GTGGTCCGAGGAGGTACAAGATTAGACGAGCTGCCACTATTGTTCTTCAGTCTTACTTGGCAGGCTTC
 TTGGCCAGAAATAGGTATCGCAAGATACTCCGTGGGCACAAAGCAGTCACTTCAAGAAGCGAGTCCGG
 GGCTGGCTGGCCCGCACACACTACAAGAGGAGCATGCATGCCATCATCTACCTTCAGTGTGCTTCAAG
 CGGATGATGGCCAAGCGTGAGCTAAAGAAGCTCAAAATCGAGGCTCGCTCAGTGGAGCGCTATAAGAAG
 CTGCGCATCGGCATGGAGAACAAGATCATGCAGCTGCAGCGCAAAGTTGATGAGCAGAACAAAGACTAC
 AAATGCCTTGTGGAGAACTAACCAATCTGGAAGGAATATACAACCTCTGAGACTGAGAACTACGAAGT
 GACTTAGAACGTCTTCACTAAGTGAAGAGGAAGCGAAAGTTGCCACTGGGCGGGTCTTAGTCTGCAG
 GAGGAAATGGCAAGCTCCGAAAGACCTGGAGCAAACCTGTTTCAAGTGAAGGAAAGAAATGCTTGGGAAC
 CAGATCGATACAAAACAAGAAACAGACAGCTGGTATCAAACTGGAAGGAAAGAAATCTTGGAGAG
 CAAGAAAAAGAACCCCTCAATCACCGCATCGTGCAGCAGGCTAAGGAGATGACAGAAACTATGGAGAAG
 AAGTTAGTAGAAGAAACGAAACAACTGGAACCTGACCTTAATGATGAAAGGCTGAGATATCAGAACCCT
 CTGAATGAGTTAGTGCCTGGAAGAAAGATATGATGACCTCAAGGAAGAGATGACCCTTATGGTGCAT
 GTGCCTAAGCCTGGACACAAGAGAACAGACTCCACCCACAGCAGCAACGAGTCTGAATATATCTTTAGC
 TCTGAAATTGCAGAAATGGAAGACATTCATCAAGGACAGAGGAACCAAGTGAAGAAGGTACCTCTG
 GACATGTCATTGTTCTTAAAGCTCCAGAAGCGGGTACAGAGCTGGAGCAGGAGAAGCAGGTGATGCAG
 GATGAGCTGGACCGCAAGGAGGAGCAGGTGCTCCGCAGCAAGGCCAAGGAAGAAGAAAGACCACAAATT
 AGAGGTGCAGAACTGGAATATGAGTCACTCAAGCGTCAAGAACTAGAATCAGAAAACAAAAACTGAAG
 AATGAGCTAAATGAGTTGCGCAAGGCCCTCAGTGAGAAAAGTGCCCGAGAGGTGACCGCCCAAGGTGCA
 CCTGCCTACCGTGTCTCATGGAGCAGCTGACCTCTGTGAGCGAGGAGCTTGTGTCGCAAGGAGGAA
 GTCCTCATCTTAAGGTCTCAACTGGTGAAGCAGAAAGAGGCCATCCAACCAAGGATGACAAGAATACA
 ATGACAGATTCACAATACTTTTGAAGATGTACAAAAATGAAAGATAAAGGTGAAATAGCACAAGCA
 TACATTGGTTTGAAGAAACAAATAGATCATCTGCTCTGGATTACCATGAGTTGAATGAGGATGGAGAG
 CTGTGGCTGGTTTATGAAGGTTAAAACAAGCCAATAGGCTCTGGAATCCCAGCTGCAGTACAGAAAG
 AGGAGCCATGAGAATGAGGCCGAGGCCCTCCGTGGGAGATCCAGAGCCTGAAGGAGGAGAACAACCGA
 CAGCAGCAGCTGCTGGCCAGAACCTGCAGCTGCCCCAGAGGCCCGCATTGAGGCCAGCTGCAGCAC
 GAGATCACCCGGTGACCAACGAAAACCTGGATTTGATGGAACAACCTGAAAAACAGGATAAGACGGTCT
 CGTAAACTGAAAAACAACCTGAAAGTATTTGCCAAAAAATTGGCGAACTAGAAGTGGGCCAGATGGAG
 AACATATCCCAGGACAGATCATTGATGAACCCATCCGACCAGTCAACATCCCAGGAAAGAAAAGGAT
 TTCCAAGGGATGCTGGAATACAAGAAGGAGGATGAGCAAAAACTTGTTAAGAACCTGATTCTGGAACCTG
 AAGCCACGTGGTGTAGCAGTCAATTTGATTCCAGGATTACCGGCATATATCTGTTCATGTGTGTTGCGA
 CATGCTGACTACCTGAATGATGATCAGAAAGTAAAGTCTGTTAACATCAACAATTAACAGCATCAAA
 AAAGTATTGAAGAAAAGAGGTGATGATTTTGAACCGTCTCTTCTGGCTCTTAACACATGCCGATTT
 TTGCACTGCTTGAACAGTACAGTGGAGAAGAGGGCTTTATGAAGCACAACACATCTCGCCAGAATGAA
 CACTGCCTCACCAATTTTACCTGGCTGAGTATCGGCAGGTGCTGAGTGACTTGGCCATTAGATCTAC
 CAGCAGCTCGTGCGGGTGTAGAGAATCCTTCAGCCAATGATTGTCTCAGGCATGCTGGAACATGAA
 ACGATTACGGCGTGTCTGGGTGAAGCCACAGGGTTGAGAAAGCGAACCTCCAGTATCGCCGATGAG
 GGCACCTACACTGGACTCCATCCTCCGGCAGCTCAACTCCTCCACTCGGTATGTGTGAGCATGGC
 ATGGACCTGAAGTATCAAGCAGGTGGTCAAGCAGATGTTCTACATCATAGGGGCCATCACCTGAAC

AACCTTCTCTGCGGAAGGACATGTGCTCCTGGAGTAAAGGCATGCAGATCAGGTACAATGTCAGTCAA
 CTGGAAGAATGGCTGCGTGACAAGAATCTGATGAATAGTGGGGCTAAAGAAACCCCTGGAACCTCTCATT
 CAGGCTGCTCAACTTTTGCAAGTAAAAAGAAAACAGATGATGATGCAGAAGCCATTTGTTCTATGTGC
 AATGCTTTAACTACTGCCAGATTGTGAAAAGTGTGAATTTGTATACTCCAGTTAATGAGTTTGAAGAA
 AGAGTCTCTGTGTCGTTTCGTAATAACAGATGCGTTTACGAGACAGGAAAGACTCTCCCCAGCTG
 CTCATGGATGCTAAACACATCTTCTGTACCTTTCTTTCAACCCATCTTCCCTCGCACTAGAAAAAC
 ATCCAGATTCAGCCAGCCTCGGCCTGGCTTTATTTCACGGGTC
 ACGCGTACGCGGCCGCTCGAGCAGAACTCATCTCAGAAGAGGATCTGGCAGCAAATGATATCCTGGAT
 TACAAGGATGACGACGATAAGGTTTAAACGGCCGGC

Protein Sequence:

>Peptide sequence encoded by RC218817
 Blue=ORF Red=Cloning site Green=Tag(s)

MAASELYTKFARVWIPDPEEVWKSSELLKDYKPGDKVLLHLEEGKDLLEYHLDPKTKELPHLRNPDILV
 GENDLTALSYLHEPAVLHNLRVRFIDSKLIYTYCGIVLVAINPYEQLPIYGEDIINAYSGQNMGMDDPH
 IFVAEEAYKQARDERNQSIIVSGESGAGKTVSAKYAMRYFATVSGSASEANVEEKVLTSPNIMESIG
 NAKTTRNDNSSRFKGYIEIGFDKRYRIIGANMRTYLLEKSRVVFQAEERNYHIFYQLCASAKLPEFKM
 LRLGNADNFNYTKQGGSPVIEGVDDAKEMAHTRQACTLLGISESHQMGIFRILAGILHLGNVGFSTRDA
 DSCTIPPKHEPLCIFCDLMGVDEEMCHWLCHRKLATAETIYIKPISKLQATNARDALAKHIYAKLFNW
 IVDNVNQLHSAVKQHSFIGVLDIYGFETFEINSFEQFCINYANEKLQQQFNMHVFKLEQEEYMKQIP
 WTLIDFYDNQPCINLIESKLGILDLLDEECKMPKGTDDTWAQKLYNTHLNKCALFEKPRLSNKAFFIIQH
 FADKVEYQCEGFLKKNKDTVFEEQIKVLKSSKFKMLPELFDDEKAI SPTSATSSGRTPLTRTPAKPTK
 GRPQMAKEHKKTIVGHQFRNSLHLLMETLNATTPHYVRCIKPNDFKLPFTFDEKRAVQQLRACGVLETI
 RISAAGFPSRWTYQEFFSRYRVLMKQKVDLSDRKQTKNVLEKLLDKDKYQFGTKIFFRAGQVAYLE
 KLRADKLRAACIRIQKTIRGWLLRKKYLRRMAAITMQRVYRGYQARCYAKFLRRTKAATIIQKYWRMY
 VVRRRYIRRAATIVLQSYLRGFLARNRYRILRGHKAVIIQKRVRGWLARTHYKRSMHAI IYLQCCFR
 RMMAKRELKLLKIEARSVERYKLRIGMENKIMQLQRKVDEQNKDYKCLVEKLTNLEGIYNSETEKLR
 DLERLQLSEEEAKVATGRVLSLQEEIAKLRKDLQTRSEKKEIEEHADRYKQETEQLVSNLKEENTLLK
 QEKEALNHRIVQAKEMTETMEKKLVEETKQLELDLNDERLRYQNLLNEFSRLEERYDDLKEEMLMVH
 VPKPGHKRTDSTHSSNESEYIFSSIEAEMEDIPSRTEEPSEKKVPLDMSLFLKLQKRVTELEQEKQVMQ
 DELDRKEEQVLRSKAKEEERPQIRGAELEYESLKRQELESENKKLNELNLRKALSEKSAPEVTAPGA
 PAYRVLMEQLTSVSEELDVRKEEVILRSQVSQKEAIQPKDDKNTMTDSTILLEDEVQMKDKGEIAQA
 YIGLKETNRSSALDYHELNEDGELWLVYEGKQANRLLESQQLSQKRSHEAEALRGEIQSLKEENNR
 QQQLLAQNLQLPPEARIEASLQHEITRLTNENLDLMEQLEKQDKTVRKLKQKLVFAKKIGELEVQOME
 NISPGQIIDEPIRPVNI PRKEKDFQGMLEYKKEDEQKLVKNLILELKPRGVAVNLIPGLPAYILFMCVR
 HADYLNDQKVRSLTSTINSIKKVLKRGDDFETVSFWLSNTRFLHCLKQYSGEEGFMKHNTSRQNE
 HCLTNFDLAEYRQVLSDLAIQIYQQLVRVLENILQPMIVSGMLEHETIQGVSGVKPTGLRKRRTSSIADE
 GTYTLDSILRQLNSFHSVMCQHGMPELIKQVVKQMFYIIGAITLNNLLLRKDMCSWSKGMQIRYNVSQ
 LEEWLRDKNLMNSGAKETLEPLIQAAQLLQVKKKTDDEAEIACSMCNALTTAQIVKVLNLYTPVNEFEE
 RVSVSFI RTIQMRLRDRKDPQLLMDAKHIFPVTFPFNPSSLALETIQIPASLGLGFISRV
 TRTRPLEQKLI SEEDLAANDILDYKDDDDKV

Restriction Sites:

Sgfl-Mlul

Cloning Scheme:


ACCN: NM_000259

ORF Size: 5565 bp

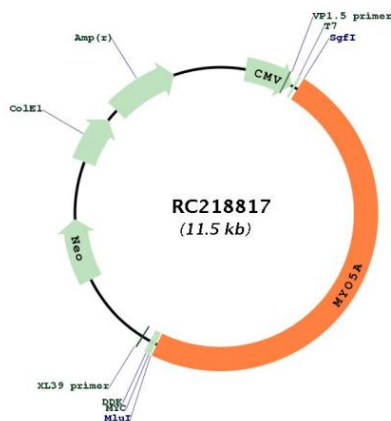
OTI Disclaimer: Due to the inherent nature of this plasmid, standard methods to replicate additional amounts of DNA in E. coli are highly likely to result in mutations and/or rearrangements. Therefore, OriGene does not guarantee the capability to replicate this plasmid DNA. Additional amounts of DNA can be purchased from OriGene with batch-specific, full-sequence verification at a reduced cost. Please contact our customer care team at custsupport@origene.com or by calling 301.340.3188 option 3 for pricing and delivery.

The molecular sequence of this clone aligns with the gene accession number as a point of reference only. However, individual transcript sequences of the same gene can differ through naturally occurring variations (e.g. polymorphisms), each with its own valid existence. This clone is substantially in agreement with the reference, but a complete review of all prevailing variants is recommended prior to use. [More info](#)

OTI Annotation: This clone was engineered to express the complete ORF with an expression tag. Expression varies depending on the nature of the gene.

- Components:** The ORF clone is ion-exchange column purified and shipped in a 2D barcoded Matrix tube containing 10ug of transfection-ready, dried plasmid DNA (reconstitute with 100 ul of water).
- Reconstitution Method:**
1. Centrifuge at 5,000xg for 5min.
 2. Carefully open the tube and add 100ul of sterile water to dissolve the DNA.
 3. Close the tube and incubate for 10 minutes at room temperature.
 4. Briefly vortex the tube and then do a quick spin (less than 5000xg) to concentrate the liquid at the bottom.
 5. Store the suspended plasmid at -20°C. The DNA is stable for at least one year from date of shipping when stored at -20°C.
- RefSeq:** [NM_000259.1](#), [NP_000250.1](#)
- RefSeq Size:** 6401 bp
- RefSeq ORF:** 5568 bp
- Locus ID:** 4644
- UniProt ID:** [Q9Y4I1](#)
- Cytogenetics:** 15q21.2
- MW:** 215.3 kDa
- Gene Summary:** This gene is one of three myosin V heavy-chain genes, belonging to the myosin gene superfamily. Myosin V is a class of actin-based motor proteins involved in cytoplasmic vesicle transport and anchorage, spindle-pole alignment and mRNA translocation. The protein encoded by this gene is abundant in melanocytes and nerve cells. Mutations in this gene cause Griscelli syndrome type-1 (GS1), Griscelli syndrome type-3 (GS3) and neuroectodermal melanolyosomal disease, or Elejalde disease. Multiple alternatively spliced transcript variants encoding different isoforms have been reported, but the full-length nature of some variants has not been determined. [provided by RefSeq, Dec 2008]

Product images:



Circular map for RC218817