

Product datasheet for RC218814

LRRK1 (NM_024652) Human Tagged ORF Clone

Product data:

Product Type:	Expression Plasmids
Product Name:	LRRK1 (NM_024652) Human Tagged ORF Clone
Tag:	Myc-DDK
Symbol:	LRRK1
Synonyms:	RIPK6; Roco1
Mammalian Cell Selection:	Neomycin
Vector:	pCMV6-Entry (PS100001)
E. coli Selection:	Kanamycin (25 ug/mL)
ORF Nucleotide Sequence:	>RC218814 representing NM_024652 Red=Cloning site Blue=ORF Green=Tags(s)

TTTTGTAATACGACTCACTATAGGGCGGCCGGAATTCGTCGACTGGATCCGGTACCGAGGAGATCTGCC
GCC**CGATCGCC**

ATGGCTGGCATGTCGCAAAGACCCCCAGCATGTACTGGTGTGTGGGCGCGGAGGAGTCAGCTGTGTGTC
CAGAACGTGCCATGGAGACGCTTAACGGTGCCGGGGACACGGGCGGAAGCCGTCCACGCGGGGCGGTGA
CCCTGCAGCGCGTCCCAGGACGGAAGGCATCCGCGCCGCGTACAGGCGGGGAGACCGCGGGCGGCC
CGGGACCTGCTGGAGGAGCCTGCGACCAGTGC GCGTCCCAGCTGGAAAAGGGCCAGCTTCTGAGCATCC
CGGCAGCCTATGGGGATCTGGAGATGGTCCGCTACCTACTCAGCAAGAGACTGGTGGAGCTGCCACCGA
GCCACCGATGACAACCCAGCCGTGGTGGCAGCGTATTTGGACACACGGCAGTTGTGCAGGAATTGCTT
GAGTCCTTACCAGGTCCTGCACTCCCGAGCGGCTTCTGAACTGGATGCTGGCCTTGGCTTGCACGCGAG
GGCACCTGGGGTTGTGAAGCTCCTGGTCTGACGCACGGGGCTGACCCGGAGAGCTACGCTGTCAGGAA
GAATGAGTTCCCTGTCATCGTGCCTTGGCCCTGTATGCGGCCATCAAGTCAGGGAATGAAGACATTGCA
ATATTCTGCTTCGGCATGGGGCTATTTCTGTTCTACATCTTGTCTGGATAGTCTGACCCAGCAAAC
ATCTGCTGAGAAAGTACTTCATTGAAGCCAGTCCCTTGGCCAGCAGTTATCCGGGAAAAACAGCTCTCCG
TGTGAAATGGTCCCATCTCAGACTGCCCTGGGTAGACCTAGACTGGCTCATAGACATCTCCTGCCAGATC
ACGGAGCTCGACCTTTCTGCCAACTGCCCTGGCGACCCTCCCTCGGTTATCCCTGGGGCTCATCAATC
TCCGGAAGCTGAACCTCTCCGACAACCACTGGGGGAGCTGCCTGGCGTGCAGTCATCGGACGAAATCAT
CTGTTCCAGGCTACTTGAATTGACATTTCCAGCAACAAGTTGTCCACCTCCCTCCTGGATTCTTGAC
CTCTCAAACTTCAAAAAGTACAGCTTCAAAAATTGTTTAGAAAAATTGTTTGAAGAAGAAAATGCCA
CTAACTGGATAGGTTTACGGAAGCTACAGGAACCTGATATATCTGACAATAAATTGACAGAACTCCCTGC
CCTGTTCTTCACTCTTCAAGTCCCTCAATTCTCTGAATGTCTCCAGAAACAACCTGAAGGTGTTTCCA
GATCCCTGGGCTGCCCTTTGAAATGTTGTAAGCTTCCAGAAATGCCCTGGAATGTCTGCCAGACAAAA
TGGCTGTCTTTGAAAAATCACCTGAAGGATGTGGATTCTCAGAAAACGCACTCAAAGAAGTTCCCT
GGGACTTTCCAGCTTGATGCCCTCATGTTCTTGAGGTTACAGGGGAACCACTGGCGGCACTTCCACCT



View online »

CAAGAGAAGTGGACCTGCAGGCAGCTCAAAACCCTGGATCTCTCCAGAAACCAACTTGGCAAAAATGAAG
 ATGGACTGAAAACGAAGCGTATTGCCTTTTACCACCAGAGGTCGCCAGCGCTCCGGGACTGAGGCAGC
 AAGTGTGCTGGAATTTCCGGCCTTCTAAGTGAGTCTTTGGAAGTCTTTGCCTGAACGACAACACCTC
 GACACAGTCCCTCCCTCGGTTTGCCTACTGAAGAGCTTATCAGAGCTCTACTTGGGAAACAACCTGGCC
 TCCGGGAGCTCCCTCCTGAGCTGGGGCAGCTGGCAACCTCTGGCAGCTGGACTGAAGACCTGACCAT
 CAGCAATGTGCCTGCAGAAATCCAAAAAGAAGGCCCAAGCAATGCTGTCTTACCTGCTGTCTCAGCTG
 CGGAAAGCGGAAAAGTGAAGCTGATGAAGATGATCATCGTGGGTCCCCCGCCAGGGCAAGTCCACCC
 TCCTGGAGATCTTACAGACGGGGAGGGCCCCCAGGTGGTGCATGGAGAGGCCACCATCAGGACCACAA
 GTGGGAGCTCCAGAGGCCGGCTGGCTCAAGAGCCAAGGTTGAGTCCGTGGAGTTCACAGTCTGGGACATC
 GGGGGACCGCCAGCATGGCCACTGTCAACCAGTCTTCTTACGGACAAGGCCCTGTACGTGGTGGTCT
 GGAACCTGGCGCTGGGGAGGAGGCCGTGGCAACCTCCAGTTCTGGCTGCTCAACATCGAGGCCAAGGC
 CCCAAACGCCGTGGTGTGGTGGTGGGACGCACCTGGATTTAATTGAAGCCAAGTTCCTGTGGAAAGG
 ATTGCAACGCTGCGTGCCTATGTGCTGGCACTCTGCCGCTCCCCCTCCGGCTCCAGGGCCACAGGCTTC
 CAGACATCACCTTCAAACACTTACATGAGATTTCTGCAAGAGCCTGGAAGGTGAGGAGGGCTGCGACA
 GCTGATTTTCCAGTACGTGCAGCATGAAGGACGTGGGCAGCACCATCGGCTGCCAGCGACTGGCAGGG
 CGGCTGATCCCCAGGAGCTACCTGAGCCTGCAGGAGGCCGTGCTGGCAGAGCAGCAGCGCCGAGCCGGG
 ACGACGACGTGCAGTACCTGACGGACAGGCAGCTGGAGCAGCTGGTGGAGCAGACGCCGACAACGACAT
 CAAGGACTACGAGGACCTGCAGTCAGCCATCAGCTTCTCATAGAAACCGGCACCCTGCTCCATTTCCCG
 GACACCAGCCACGGCCTGAGGAACCTCTACTTCTCGACCCTATTTGGCTCTCCGAATGTCTGCAGAGGA
 TCTTTAATATTAAGGGCTCTCGGTCACTGGCCAAGAATGGGGTATCAGAGCAGAAGACCTCAGGATGCT
 GCTGGTGGGACTGGCTTACGCAGCAGACGGAAGAGCAGTACTTCCAGTTCCTGGCCAAGTTTGGATC
 GCCCTGCCGTCGCCAATGACAGCTACCTCCTGCCCATCTCTTCCATCAAACCTGGCCTGGACACCC
 ACGGATGCGGCACCCACAGCCAACACCTTCAAGAGGTAATTAAGATGAGCTTCGTTCCGTTGGCTT
 CTGGCAAAAGTTTATAGCACGGATGCTGATCAGCCTGGCGGAGATGGACCTGCAGCTTTTTGAAAAACAAG
 AAGAATACTAAAAGCAGGAACAGGAAAGTCAACATTTACAGTTTTACAGGAAACAGAGAATCGTGTA
 GCACATTCAGAGTGAAAAGAAATCAGACCATCTATTGGCAGGAAGGGCTCCTGGTCACTTTTGTGGGG
 CTACCTCAGTGTGAATCTTCCGACGTGAAGTGGAAAAAGAAAAGCGGAGGAATGAAAATTGTTTGC
 CAATCAGAAGTGAGGGACTTCTCAGCCATGGCTTTCATCACGGACCACGTCAATTCCTGATTGATCAGT
 GGTTCGCCCTGACAGCCACAGAGAGCGACGGGACGCCACTCATGGAGCAGTACGTGCCCTGCCCGGT
 CTGCGAGACAGCCTGGGCCAGCACACGGACCCAGTGAAGAAATCAGAGGATGTGCAGTACTTCGACATG
 GAAGACTGTGCTGACGGCCATCGAGCGGACTTCATCTCTGCCCCAGACACCCGGACCTCCCGTGC
 CGCTGCAGGAGCTGGTCCCTGAACTGTTATGACCGACTTCCCGCCAGGCTCTTCTGGAGAACAGCAA
 GCTGGAGCACAGCGAGGACGAGGGCAGCGTCTGGGCCAGGGCGGCAGTGGCACCGTCACTACCGGGCC
 CGGTACCAGGGCCAGCCTGTGGCCGTCAAGCGCTTCCACATCAAAAAATTAAGAAGTTCGTAACGTAC
 CGGCAGACACCATGCTGAGGCACCTGCGGGCCACCGATGCCATGAAGAATTCCTCCGAGTTCGGCAGGA
 GGCCAGCATGCTGCACGCGCTGCAGCACCCCTGCATCGTGGCGCTCATCGGCATCAGCATCCACCCGCTC
 TGCTTCGCCCTGGAGCTCGCGCCGCTCAGCAGCCTCAACACCGTGTGTCCGAGAACGCCAGAGATTCTT
 CCTTTATACCCCTGGGACACATGCTCACCAAAAAATAGCCTACCAGATCGCCTCGGGCCTGGCCTACCT
 GCACAAGAAAAACATCATCTTCTGTGACCTGAAGTCGGACAACATTCGTTGTGGTCCCTGACGTCAAG
 GAGCACATCAACATCAAGCTATCTGACTACGGGATTTTCGAGGCAGTCAATCCATGAGGGCCCTAGGCG
 TGGAGGGCACTCTGGTACCAGGCCCCAGAGATCAGGCCTCGCATTGTATATGATGAGAAGGTAGATAT
 GTTCTCTATGGAATGGTGTCTACGAGTGTGTGTCAGGACAGCGCCCTGCACTGGGCCACCACCAGCTC
 CAGATTGCCAAGAAGCTGTCCAAGGGCATCCGCCCGGTTCTGGGGCAGCCGGAGGAAGTGCAGTTCGGC
 GACTGCAGGCGCTCATGATGGAGTGTGGGACACTAAGCCAGAGAAGCGACCGCTGGCCCTGTGGTGGT
 GAGCCAGATGAAGGACCCGACTTTGCCACCTTATGATGAAGTGTGCTGTGGGAAGCAGACAGCCTTC
 TTCTCATCCAGGGCCAGGAGTACACCGTGGTGTGGGATGAAAAGAGGAGTCCAGGAACTACACGG
 TGGTGAACACAGAGAAGGGCCTCATGGAGTGCAGAGGATGTGCTGCCCTGGGATGAAGGTGAGTGCCA
 GCTCCAGGTCCAGAGATCCCTGTGGACAGCCACCGAGGACCAGAAAATCTACATCTACACCTCAAGGGC
 ATGTGCCCTTAAACACACCCCAACAGGCCTTGGATACTCCAGCTGTCGTACCTGCTTCTTGGCCGTGC
 CTGTTATTAAGAAATTCCTACCTGGTCTTAGCGGGCCTCGCCGATGGGCTTGTGGCTGTGTTCCCGT
 GGTGCGGGGACCCCAAGGACAGCTGCTCCTACCTGTGCTCACACACAGCCAACAGGTCCAAGTTCAGC
 ATCGGGATGAAGACGCACGGCAGAACCCCTACCCAGTGAAGGCCATGGAGGTGGTCAACAGCGGCTCTG

AGGTCTGGTACAGCAATGGGCCGGGCTCCTTGTTCATCGACTGTGCCTCCCTGGAGATCTGCAGGCGGCT
 GGAGCCCTACATGGCCCCCTCCATGTTACGTCAGTCGTGTGCAGCTCTGAGGGCAGAGGGGAGGAGGTC
 GTCTGGTGCCTGGATGACAAGGCCAACTCCTTGGTGATGTACCACTCCACCACCTACCAGCTGTGTGCC
 GGTACTTCTGCGGGTCCCAGCCCCCTCAGGGACATGTTTCCCGTGGCGCCCTTGACACGGAACCCCC
 GGCAGCCAGCCACACGGCCAACCCAAAGGTGCCTGAGGGGACTCCATCGCGGACGTGAGCATCATGTAC
 AGTGAGGAGCTGGGCACGCAGATCCTGATCCACCAGGAATCACTACTGACTACTGCTCCATGTCCTCCT
 ACTCCTCATCCCCACCCGCCAGGTGCCAGTCCCCCTCAAGCCTCCCCAGCTCCCCAGCAAGTCTTTC
 CAGTGTGCCTTTCTCACCGACTGCGAGGACTCAGACATGCTACATACGCCCGGTGCTGCCCTCCGACAGG
 TCTGAGCATGACCTGACCCCATGGACGGGAGACCTTACGCCAGCACCTGCAGGCCGTGAAGATCCTCG
 CCGTCAGAGACCTCATTGGGTCCCAGGCGCGGTGGAGATGTTATCGTCATTGGCCTGGAGAAGGATTC
 TGGCGCCAGCGGGCCGAGTCATTGCCGTCTTAAAAGCCGAGAGCTGACTCCGCATGGGGTGTGGTG
 GATGCTGCCGTGGTGGCAAAGGACACTGTTGTGTGCACCTTTGAAAATGAAAACACAGAGTGGTGCCTGG
 CCGTCTGGAGGGCTGGGGCGCCAGGGAGTTCGACATTTCTACCAGTCTACGAGGAGCTGGGCCGGCT
 GGAGGCTTGCCTCGAAGAGAAGG

ACGCGTACGCGGCGCTCGAGCAGAACTCATCTCAGAAGAGGATCTGGCAGCAAATGATATCCTGGATT
 ACAAGGATGACGACGATAAGGTTTAA

Protein Sequence:

>RC218814 representing NM_024652
 Red=Cloning site Green=Tags(s)

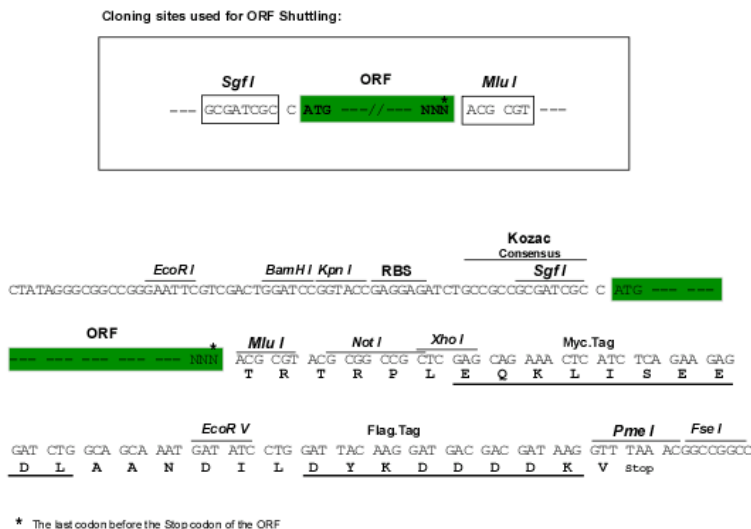
MAGMSQRPPSMYWCVGPEESAVCPERAMETLNGAGDTGGKPSTRGGDPAARSRRTEGIRAAAYRRGDRGGA
 RDLLLEEACDQCASQLEKQQLLSIPAAYGDEMVRVLLSKRLVELPTEPTDDNPVAVVAAYFGHTAVVQELL
 ESLPGPCSPQRLLNWMALALACQRGHLGVVKLLVLTHGADPESYAVRKNEFPVIVRLPLYAAIKSGNEDIA
 IFLLRHGAYFCSYILLDSPDPSKHLRKYFIEASPLPSSYPGKTALRVKWSHLRPLPWVDLDLIDISQI
 TELDL SANCLATLPSVIPWGLINLRKLNLSDNHLGELPGVQSSDEIICSRLEIDISSNKL SHLPPGFLH
 LSKLQKL TASKNCLEKLFEEENATNWIGLRKLQELDISDNKL TELPALFLHSFKLSNLSNLSRNLKVFPP
 DPWACPLKCKKASRNAL ECLPDKMAVFWKNHLKDVDF SENALKEVPLGLFQLDALMFLRLQGNQLAALPP
 QEKWTCRQLKTLDL SRNQLGKNEDGLKTKRIAFFTRGRQRSQTEAASVLEFPALFSESEVLCLNDNHL
 DTVPPSVCLLKSLS ELYLGNPGLRELPELQQLGNLWQLDTEDLTISNVP AEIQKEGPKAML SYLRAQL
 RKA EKCKLMKMIIVGPPRQ GKSTLLEILQTGRAPQVHGEATIRTTKWELQRPAGSRAKVESVEFNWVDI
 GGPASMATVNQCFFTDKALYVVVWNLALGEEAVANLQFWLLNIEAKAPNAVVLVVGTHLDLIEAKFRVER
 IATLRAYVLALCRSPSGSRATGFPDITFKHLHEISCKSLEGEGLRQLIFHVTCMKDVGSTIGCQRLAG
 RLIPRSYLSLQEA VLAEQRRSRDDVQYLTDRQLEQLVEQTPDNDIKDYEDLQSAISFLIETGTLHFP
 DTSHLRNL YFLDPIWLSECLQRFNIKGSRSVAKNGVIRAEDLRMLLVGTGFTQQTEEQYFQFLAKFEI
 ALPVANDSYLLPHLLPSKPGLDTHGMRHPTANTIQRVFKMSFVPVGFWRQFIARMLISLAEMDLQLFENK
 KNTKSRNRKVTIYSFTGNQRNRCSTFRVKNQTIYWQEGLLVTFDGGYLSVSSDVNWKKKSGGMKIVC
 QSEVRDFSAMAFITDHNLSLIDQWFPAL TATESDGTPLMEQYVPCPV CETAWAQHTDPSEKSEDVQYFDM
 EDCVLTAIERDFISCPRHDPVPLQELVPELFMTDFPARLFLENSKLEHSEDEGSVLGGQSGTVIYRA
 RYQGPVAVKRFHIKKFNANVPADTMLRHLRATDAMKNFSEFRQEASMLHALQHPCIVALIGISIHPL
 CFALELAPLSSLNTVLS ENARDSSFIP LGHMLTQKIAYQIASGLAYLHKKNIIFCDLKSNDILVWSLDVK
 EHINIKLSDYGISRQSFHEGALGVEGTPGYQAP EIRPRIVYDEKVD MF SYGMVL YELLSGQRPALGHHQL
 QIAKKLSK GIRPVLGQPEEVQFRLQALMMECWDTKPEKRPLALSVVSQMKDPTFATFMYELCCGKQTA
 FSSQGEYTVVFDGKEESRNYTVNTEKGLMEVQRMCCPGMKVSCQLQVQRSLWTATEDQKIYIYTLKG
 MCPLNTPQALDTPAVVTCFLAVPVIKNSYL VLAGLADGLVAVFPVVRGTPKDCSYLCSHTANRSKFS
 IAEDARQNPYPVKAMEVVNSGSEVWYNSNGPGLLVIDCASLEICRRLEPYMAPSMVTSVCSSEGRGEEV
 VWCLDDKANSLVMYHSTTYQLCARYFCGVPSPLRDMFPVRPLDTEPPAASHTANPKVPEGDSIADVSIMY
 SEELGTQILIHQESLTDYCSMSYSSSPRQAARSPSSLPSSPASSSVPFSTDCEDSDMLHTPGAASDR
 SEHDLTPMDGETFSQHLQAVKILAVRDLIWWPRRGDVIIVIGLEKDSGAQRGRVIAVLKARELTPHGVLV
 DAAVVAKDTVVCTFENETEWC LAVWRGWGAREFDIFYQSYEELGRLEACTRKR

TRTRPLEQKLI SEEDLAANDILDYKDDDDKV

Chromatograms: https://cdn.origene.com/chromatograms/mg3156_b12.zip

Restriction Sites: Sgfl-MluI

Cloning Scheme:



ACCN: NM_024652

ORF Size: 6045 bp

OTI Disclaimer: The molecular sequence of this clone aligns with the gene accession number as a point of reference only. However, individual transcript sequences of the same gene can differ through naturally occurring variations (e.g. polymorphisms), each with its own valid existence. This clone is substantially in agreement with the reference, but a complete review of all prevailing variants is recommended prior to use. [More info](#)

OTI Annotation: This clone was engineered to express the complete ORF with an expression tag. Expression varies depending on the nature of the gene.

Components: The ORF clone is ion-exchange column purified and shipped in a 2D barcoded Matrix tube containing 10ug of transfection-ready, dried plasmid DNA (reconstitute with 100 ul of water).

Reconstitution Method:

1. Centrifuge at 5,000xg for 5min.
2. Carefully open the tube and add 100ul of sterile water to dissolve the DNA.
3. Close the tube and incubate for 10 minutes at room temperature.
4. Briefly vortex the tube and then do a quick spin (less than 5000xg) to concentrate the liquid at the bottom.
5. Store the suspended plasmid at -20°C. The DNA is stable for at least one year from date of shipping when stored at -20°C.

RefSeq: [NM_024652.3](#), [NP_078928.3](#)

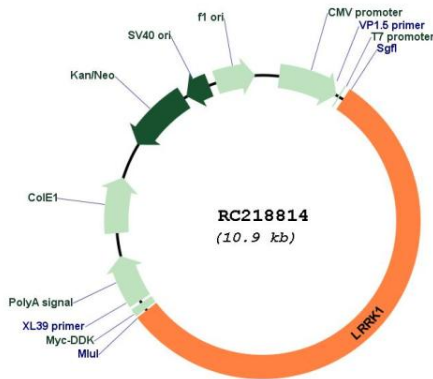
RefSeq Size: 7647 bp

RefSeq ORF: 6048 bp

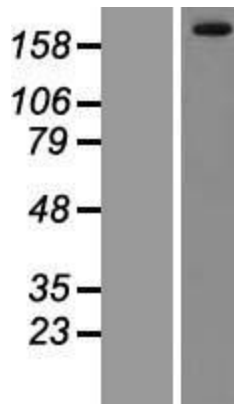
Locus ID: 79705

UniProt ID: [Q38SD2](#)
Cytogenetics: 15q26.3
Protein Families: Druggable Genome, Protein Kinase
MW: 225.2 kDa
Gene Summary: This gene encodes a multi-domain protein that is a leucine-rich repeat kinase and a GDP/GTP binding protein. The encoded protein is thought to play a role in the regulation of bone mass. Mice lacking a similar gene showed severe osteopetrosis, increased bone mineralization and decreased bone resorption. [provided by RefSeq, Jan 2017]

Product images:



Circular map for RC218814



Western blot validation of overexpression lysate (Cat# [LY411169]) using anti-DDK antibody (Cat# [TA50011-100]). Left: Cell lysates from untransfected HEK293T cells; Right: Cell lysates from HEK293T cells transfected with RC218814 using transfection reagent MegaTran 2.0 (Cat# [TT210002]).