

Product datasheet for RC218813

CD47 (NM_001777) Human Tagged ORF Clone

Product data:

Product Type:	Expression Plasmids
Product Name:	CD47 (NM_001777) Human Tagged ORF Clone
Tag:	Myc-DDK
Symbol:	CD47
Synonyms:	IAP; MER6; OA3
Mammalian Cell Selection:	Neomycin
Vector:	pCMV6-Entry (PS100001)
E. coli Selection:	Kanamycin (25 ug/mL)
ORF Nucleotide Sequence:	>RC218813 representing NM_001777 Red=Cloning site Blue=ORF Green=Tags(s)

TTTTGTAATACGACTCACTATAGGGCGGCCGGAATTCGTCGACTGGATCCGGTACCGAGGAGATCTGCC
GCC**CGATCGCC**

ATGTGGCCCTGGTAGCGGCGCTGTTGCTGGGCTCGGCGTGTGCGGATCAGCTCAGCTACTATTTAATA
AAACAAATCTGTAGAATCACGTTTTGTAATGACTGTCGTCATTCCATGCTTTGTTACTAATATGGA
GGCACAAACACTACTGAAGTACGTAAGTGGAAATTTAAAGGAAGAGATTTACACCTTTGATGGA
GCTCTAAACAAGTCCACTGTCCCCTGACTTTAGTAGTGCAAAATTTGAAGTCTACAATTACTAAAAG
GAGATGCCTCTTTGAAGATGGATAAGAGTATGCTGTCTCACACACAGGAACTACACTTGTGAAGTAAC
AGAATTAACCAGAGAAGTGAAACGATCATCGAGCTAAAATATCGTGTTGTTTCATGGTTTTCTCCAAAT
GAAAATATTCTTATTGTTATTTCCCAATTTTGTCTATACTCCTGTTCTGGGGACAGTTTGGTATTA
CACTTAAATATAGATCCGGTGGTATGGATGAGAAAACAATTGCTTTACTTGTGGACTAGTGATCAC
TGTCAATGTCATTGTTGGAGCCATTCTTTTCGTCAGGTGAATATTCATTAAAGAATGCTACTGGCCTT
GGTTAATTGTGACTTCTACAGGATATTAATATTACTTCACTACTATGTGTTTAGTACAGCGATTGGAT
TAACCTCCTTCGTCATTGCCATATTGGTTATTCAGGTGATAGCCTATATCCTCGCTGTGGTTGGACTGAG
TCTCTGTATTGCGGCGTGTATACCAATGCATGGCCCTCTCTGATTTTCAGTTTGAGTATCTTAGCTCTA
GCACAATTACTTGGACTAGTTTATGAAATTTGTGGCTTCCAATCAGAAGACTATACAACCTCTAGGA
AAGCTGTAGGGAACCCCTTAATGCATTCAAAGAATCAAAGGAATGATGAATGATGAA

ACGCGTACGCGGCCGCTCGAGCAGAACTCATCTCAGAAGAGGATCTGGCAGCAATGATATCCTGGATT
ACAAGGATGACGACGATAAGGTTTAA



[View online »](#)

Protein Sequence: >RC218813 representing NM_001777
Red=Cloning site Green=Tags(s)

MWPLVAALLLGSACCGSAQLLFNKTKSVEFTFCNDTVVIPCFTVNMEAQNTTEVYVKWFKGRDIYTFDG
 ALNKSTVPTDFSSAKIEVSQLLKGDASLKMDKSDAVSHTGNYTCEVTEL TREGETIIEIKYRVVSWFSPN
 ENILIVIFPIFAILLFWGQFGIKTLKYRSGGMDEKTIALLVAGLVITVIVIVGAILFVPGEYSLKNATGL
 GLIVTSTGILILLHYVVFSTAIGLTSFVIAILVIQVIAYILAVVGLSLCIAACIPMHGPLLI SGLSILAL
 AQLLGLVYMKFVASNQTIQPPRKAVEEPLNAFKESKGMNDE

TRTRPLEQKLISEEDLAANDILDYKDDDDKV

Chromatograms: https://cdn.origene.com/chromatograms/mk6214_b06.zip

Restriction Sites: SgfI-MluI

Cloning Scheme:

Cloning sites used for ORF Shuttling:



* The last codon before the Stop codon of the ORF

ACCN: NM_001777

ORF Size: 969 bp

OTI Disclaimer: The molecular sequence of this clone aligns with the gene accession number as a point of reference only. However, individual transcript sequences of the same gene can differ through naturally occurring variations (e.g. polymorphisms), each with its own valid existence. This clone is substantially in agreement with the reference, but a complete review of all prevailing variants is recommended prior to use. [More info](#)

OTI Annotation: This clone was engineered to express the complete ORF with an expression tag. Expression varies depending on the nature of the gene.

Components: The ORF clone is ion-exchange column purified and shipped in a 2D barcoded Matrix tube containing 10ug of transfection-ready, dried plasmid DNA (reconstitute with 100 ul of water).

Reconstitution Method:

1. Centrifuge at 5,000xg for 5min.
2. Carefully open the tube and add 100ul of sterile water to dissolve the DNA.
3. Close the tube and incubate for 10 minutes at room temperature.
4. Briefly vortex the tube and then do a quick spin (less than 5000xg) to concentrate the liquid at the bottom.
5. Store the suspended plasmid at -20°C. The DNA is stable for at least one year from date of shipping when stored at -20°C.

Note: Plasmids are not sterile. For experiments where strict sterility is required, filtration with 0.22um filter is required.

RefSeq: [NM_001777.4](#)

RefSeq Size: 5346 bp

RefSeq ORF: 972 bp

Locus ID: 961

UniProt ID: [Q08722](#)

Cytogenetics: 3q13.12

Domains: CD47

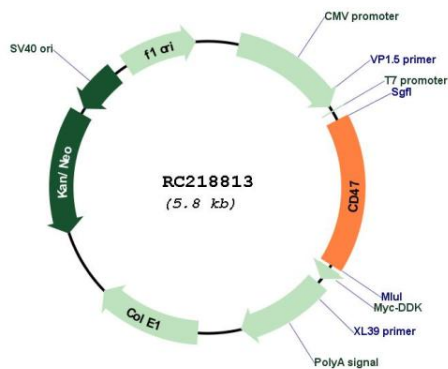
Protein Families: Druggable Genome, Transmembrane

Protein Pathways: ECM-receptor interaction

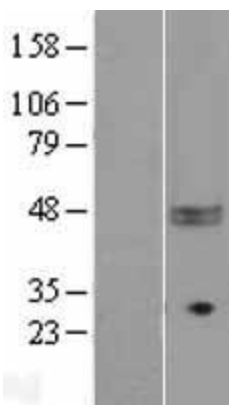
MW: 35.21 kDa

Gene Summary: This gene encodes a membrane protein, which is involved in the increase in intracellular calcium concentration that occurs upon cell adhesion to extracellular matrix. The encoded protein is also a receptor for the C-terminal cell binding domain of thrombospondin, and it may play a role in membrane transport and signal transduction. This gene has broad tissue distribution, and is reduced in expression on Rh erythrocytes. Alternatively spliced transcript variants have been found for this gene. [provided by RefSeq, Jul 2010]

Product images:



Circular map for RC218813



Western blot validation of overexpression lysate (Cat# [LY419754]) using anti-DDK antibody (Cat# [TA50011-100]). Left: Cell lysates from untransfected HEK293T cells; Right: Cell lysates from HEK293T cells transfected with RC218813 using transfection reagent MegaTran 2.0 (Cat# [TT210002]).