

Product datasheet for **RC218802**

RNF6 (NM_183044) Human Tagged ORF Clone

Product data:

Product Type:	Expression Plasmids
Product Name:	RNF6 (NM_183044) Human Tagged ORF Clone
Tag:	Myc-DDK
Symbol:	RNF6
Mammalian Cell Selection:	Neomycin
Vector:	pCMV6-Entry (PS100001)
E. coli Selection:	Kanamycin (25 ug/mL)



[View online »](#)

ORF Nucleotide
Sequence:

>RC218802 representing NM_183044
Red=Cloning site Blue=ORF Green=Tags(s)

TTTTGTAATACGACTCACTATAGGGCGGCCGGAATTCGTCGACTGGATCCGGTACCGAGGAGATCTGCC
GCCCGCATCGCC

ATGAATCAGTCTAGATCGAGATCAGATGGTGGCAGTGAAGAAACCTTACCTCAAGACCATAATCATCATG
AAAATGAGAGAAGATGGCAGCAAGAGCGTCTCCACAGAGAAGAGGCCTATTATCAGTTTATAATGAACT
CAATGATGAAGATTATCGGCTTATGAGAGACCATAATCTTTTAGCCACCCTGGAGAAAATACATCAGAA
GAACTGCAACAGCGGTTAGATGGCGTCAAGGAACAACAGCATCTCAGCCTGACTTGAGAGATGGAACGA
ATTACAGAGACTCAGAAGTCCCTAGAGAAAAGTTACATGAAGATTCTTCTAGAATGGTTGAACACCTT
TCGGCGCACAGGAAAATGCAACTCGAAGTGGACAAAATGGGAACCAAACTTGGAGAGCTGTGAGTCAACA
AACCCGAAACAATGGAGAGTTTCGGTTTAGTTGGAAATCCACGTAATCATGAAAATAGAGGATTTGAAA
TTCATGGAGAAGATTATACAGACATTCCTTTTCCAGATAGTAACAGAGATCATACTGCAAAATAGGCAACA
AAGGTCAACTAGTCTGTGGCTAGGCGAACAAGAAGCCAAACCTCAGTGAATTTCAATGGTAGTAGTTCC
AACATTCGAAGGACTAGGCTTGCTTCAAGGGGGCAAAAATCCAGCTGAAGGATCTTTCTCAACATTGGGAA
GGTTAAGAAAATGGAATGGGGGAGCAGCTGGCATTCTCGAGCTAACGCTTACGCACTAATTTTCAGTAG
TCACACAAACCAATCAGGTGGTAGTGAACCTCAGGCAAAGGGAGGGGCAACGGTTTGGAGCAGCACATGTT
TGGGAAAATGGGGCTAGAAGTAATGTTACAGTGAGGAATACAAACCAAAGATTAGAGCCAATAAGATTAC
GATCTACTTCCAATAGTCGAAGCCGTTCCCAATTCAGAGACAGAGTGGCACTGTTTATCATAATTTCCCA
AAGGAAAAGTAGACCAGTACAGCAAACCACTAGAAGATCTGTTAGGAGGAGAGGTAGAATCGAGTCTTT
TTAGAGCAAGATAGAGAACGAGAACGCAGAGGTACTGCATATACCCATTCTCTAATTCAAGGCTGTGT
CAAGAATAACAGTAGAAGAAGGAGAAGAATCCAGCAGATCCTCAACTGCTGTACGACGACATCCAACAAT
CACACTGGACCTTCAAGTGAGAAGGATCCGTCTGGAGAAAATAGAGATCGGGATAGTATTGCAAAATAGA
ACTCGATCCAGAGTAGGGCTAGCAGAAAATACAGTCACTATTGAAAGCAATAGTGGGGCTTTCCGCCGAA
CCATTTCTCGTTTAGAGCGGTCAGGTATTCGAACCTATGTTAGTACCATAACAGTTCTCTTCTGATGGAT
TTCTGAGAATGAGCTTGTGAGCCATCATCAGTGGCTCTTCGGTCAATTTAAGGCAGATCATGACTGGG
TTTGGAGAACTGAGTTCTCTAATGGAGGCCGATTCTGAGTCAGAACTTCAAAGAAAATGGCCAGCATTAC
CAGACATGCACTCAGAACTGAGTAACTTAGGTACAGATAACAACAGGAGCCAGCAGGGAAGGTTCTCTC
TCAAGACAGGCAGGCCAAGGAGACAGCACTGAAATGCATGGTGAACACGAGACCACCCAGCCTCATACT
CGAAACAGTGACAGTAGGGGTGGCAGGCAGTTGCGAAAATCCAACAATTTAGTTGAACTGGAACACTAC
CCATTTCTCGCCTTGCTCACTTTTTTTTACTAAATGAAAAGTGATGATGATGATCGAATACGTGGTTTAA
CAAAGAGCAGATTGACAATCTTTCCACCAGGCACTATGAGCATAACAGTATTGATAGTGAAC TAGGTA
ATCTGTAGTGTGTTGATTAGTACTATGTAACGGAAAACAAGCTCAGGCAATTACCTTGATGATGAAT
TTCACATTCATTGATTGACCGATGGCTCTCAGAGAATTGCACTTGTCCGATCTGTCCGACGCTGTTTT
AGGGTCTAACATAGCAAACAATGGG

ACGCGTACGCGGCCGCTCGAGCAGAACTCATCTCAGAAGAGGATCTGGCAGCAAATGATATCCTGGATT
ACAAGGATGACGACGATAAGGTTTAA

Protein Sequence: >RC218802 representing NM_183044
Red=Cloning site Green=Tags(s)

```
MNQSRSRSDGGSEETLPQDHNHHENERRWQERLHREEAYYQFINELNDEYRLMRDHNLLGTPGEITSE
ELQQRLDGVKEQLASQPDLRDGTNYRDSEVPRESSHEDSLEWLNTFRRTGNATRSGQNGQNTWRAVSRT
NPNNGEFRFSLEIHVNHENRGFEIHGEDYTDIPLSDSNRDHTANRQQRSTSPVARRTRSQTSVNFGSSS
NIPRTRLASRGQNPAEGSFSTLGRLRNGIGGAAGIPRANASRTNFSHTNQSGGSELRQREGQRFGAAHV
WENGARSNVTVRNTNQRLEPIRLRSTSNRSRSPIQRQSGTVYHNSQRESRPVQQTTRRSVRRRGRTRVF
LEQDRERERRGTAYTPFSNSRLVSRITVEEGEESRSSTAVRRHPTITLDLQVRRIRPGENRDRDSIANR
TRSRVGLAENTVTIESNSGGFRRTISRLESGIRTYVSTITVPLRRISENELVEPSSVALRSILRQIMTG
FGELSSLMEADSESELQRNGQHLPMHSELNLGTDNNRSQHREGSSQDRQAQGDSTEMHGENETTQPH
RNSDSRGGRQLRPNL VETGTLPIRLLAHFLLNESDDDDRIRGLTKEQIDNLSTRHYEHNISIDSELGK
ICSVICISDYVTGNKLRQLPCMEHFHIHCIDRWLSENCTCPICRQPVLGSNIANNG
```

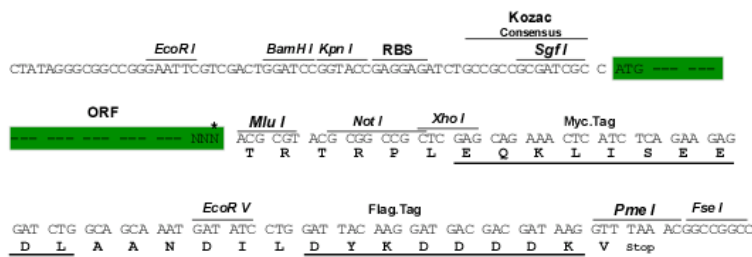
TRTRPLEQKLISEEDLAANDILDYKDDDDKV

Chromatograms: https://cdn.origene.com/chromatograms/mk6325_c04.zip

Restriction Sites: SgfI-MluI

Cloning Scheme:

Cloning sites used for ORF Shuttling:



* The last codon before the Stop codon of the ORF

ACCN: NM_183044

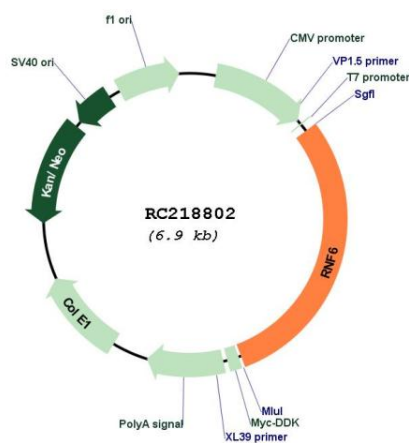
ORF Size: 2055 bp

OTI Disclaimer: The molecular sequence of this clone aligns with the gene accession number as a point of reference only. However, individual transcript sequences of the same gene can differ through naturally occurring variations (e.g. polymorphisms), each with its own valid existence. This clone is substantially in agreement with the reference, but a complete review of all prevailing variants is recommended prior to use. [More info](#)

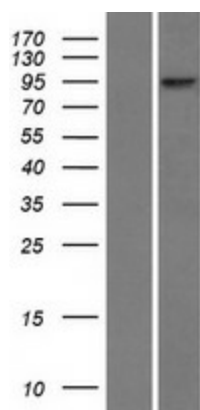
OTI Annotation: This clone was engineered to express the complete ORF with an expression tag. Expression varies depending on the nature of the gene.

Components:	The ORF clone is ion-exchange column purified and shipped in a 2D barcoded Matrix tube containing 10ug of transfection-ready, dried plasmid DNA (reconstitute with 100 ul of water).
Reconstitution Method:	<ol style="list-style-type: none"> 1. Centrifuge at 5,000xg for 5min. 2. Carefully open the tube and add 100ul of sterile water to dissolve the DNA. 3. Close the tube and incubate for 10 minutes at room temperature. 4. Briefly vortex the tube and then do a quick spin (less than 5000xg) to concentrate the liquid at the bottom. 5. Store the suspended plasmid at -20°C. The DNA is stable for at least one year from date of shipping when stored at -20°C.
RefSeq:	<u>NM_183044.2</u>
RefSeq Size:	3419 bp
RefSeq ORF:	2058 bp
Locus ID:	6049
UniProt ID:	<u>Q9Y252</u>
Cytogenetics:	13q12.13
Protein Families:	Druggable Genome
MW:	77.9 kDa
Gene Summary:	The protein encoded by this gene contains a RING-H2 finger motif. Deletions and mutations in this gene were detected in esophageal squamous cell carcinoma (ESCC), suggesting that this protein may be a potential tumor suppressor. Studies of the mouse counterpart suggested a role of this protein in the transcription regulation that controls germinal differentiation. Multiple alternatively spliced transcript variants encoding the same protein are observed. [provided by RefSeq, Jul 2008]

Product images:



Circular map for RC218802



Western blot validation of overexpression lysate (Cat# [LY405215]) using anti-DDK antibody (Cat# [TA50011-100]). Left: Cell lysates from untransfected HEK293T cells; Right: Cell lysates from HEK293T cells transfected with RC218802 using transfection reagent MegaTran 2.0 (Cat# [TT210002]).