

Product datasheet for RC218799

IFT172 (NM_015662) Human Tagged ORF Clone

Product data:

Product Type: Expression Plasmids
Product Name: IFT172 (NM_015662) Human Tagged ORF Clone
Tag: Myc-DDK
Symbol: IFT172
Synonyms: BBS20; NPHP17; osm-1; RP71; SLB; SRTD10; wim
Mammalian Cell Selection: Neomycin
Vector: pCMV6-Entry (PS100001)
E. coli Selection: Kanamycin (25 ug/mL)
ORF Nucleotide Sequence: >RC218799 representing NM_015662
 Red=Cloning site Blue=ORF Green=Tags(s)

TTTTGTAATACGACTCACTATAGGGCGGCCGGAATTCGTCGACTGGATCCGGTACCGAGGAGATCTGCC
 GCC**CGATCGCC**

ATGCCTTGAAGCACCTGAGGACCCTGCTGAGCCCTCAGGATGGAGCTGCAAAGGTGACCTGCATGGCTT
 GGTCCCAGAACAATGCCAAATTTGCTGTCTGCACAGTGGACCGAGTGGTCTTGTGTATGATGAACATGG
 AGAACGGAGAGATAAATCTCCACCAAACCAGCTGACATGAAGTATGGCAGGAAGAGCTATATGGTGAAG
 GGCATGGCTTTTTCTCCTGATTCCACTAAAATTGCCATAGGACAGACTGACAACATCATCTATGTCTACA
 AGATTGGAGAAGATTGGGGTGACAAGAAAGTCATCTGCAACAAGTTCATCCAGACGAGTGTCTCACTTG
 TCTGCAATGGCCGCGAGAATACATCATTGTCTTTGGACTGGCTGAAGGGAAGGTTTCGTTTAGCAAACACC
 AAAACTAATAAATCATCTACCATCTATGGGACAGAGTCTTACGTGGTGTCCCTGACAACAAATTGCTCTG
 GGAAAGGAATTCTCTCTGGTCAATGCAGATGGTACCATCGTTAGGTATTTCTTTGATGATGAAGGCTCTGG
 AGAGTACAGGGGAAGTTGGTTAACCACCCGTGTCCACCCATGCCTTGGCATGGCAACCAATAGCATC
 GTGGCTGCAGGCTGTGATCGGAAAATTGTAGCCTATGGAAAAGAAGTGCATGCTACAACTTTTGATT
 ATAGCCGTGACCCTCAGGAGCGGGAGTTCACCACAGCTGTATCAAGTCTGGGGGCCAGTCTGTTGTGCT
 AGGAAGTTATGACAGGCTTCGGGTGTCAACTGGATCCCTCGAAGAAGCATCTGGGAAGAGGCAAAGCCC
 AAGGAGATTACCAATTTATACACCATCACTGCCTTGGCCTGGAAGCGGGATGGCTCACGGCTCTGTGTGG
 GCACACTATGTGGTGGGGTGAACAGTTTGACTGCTGCCTCCGAAGGAGTATTTACAAGAACAAGTTTGA
 GTTGACGTATGTGGACCTAGCCAGGTGATTGTGAAGAACCTGTATCAGGAACCCGAGTGGTGTCTCAAG
 TCACACTATGGCTATGAGGTGGAAGAGGTGAAAATCCTAGGAAAGGAACGTTACTTGGTGGCTCACACAT
 CAGAAACACTGCTGCTGGGGACCTGAACACTAATCGGCTTAGTGAGATAGCCTGGCAAGGATCTGGTGG
 CAATGAGAAGTATTTCTTTGAAAATGAGAATGTATGCATGATCTTCAATGCCGGAGAGCTAACCCCTGGT
 GAATATGGGAATAATGACACCCTGGTTCTGTACGCACTGAATTCATGAACCCCCACCTCATCAGTGTTC
 GTATTAATGAGAGGTGTCAGCGAGGAACAGAAGATAATAAGAAAATGGCTTATCTTATTGATTAAGAC
 TATTGCTATAGTGATCTGATTGGTGGCTACAACATTGGCACCGTCAGCCATGAGAGCCGTGGATTGG



[View online »](#)

CTGGAACCTAATGAGACTGGACACAAGCTCCTCTTCAGGGACCGGAACTTCGTTTGCATCTGTATGATA
 TTGAAAGCTGCTCTAAGACAATGATCCTCAACTTCTGCTCCTATATGCAGTGGTCCCAGGAAGTGACGT
 GCTGGTAGCTCAGAACCGAAACAGTCTGTGTGTATGGTACAACATTGAGGCACCTGAGAGAGTCACCATG
 TTCACTATTAGGGGTGATGTTATAGGTCTGGAGCGGGCGGGGAAAGACCGAGGTGATGGTGATGGAAG
 GTGTGACTACTGTTGCCACACATTGGATGAGGGCCTCATCGAGTTTGAACAGCCATTGATGATGGCAA
 CTACATCCGGGCAACAGCCTTCTTAGAGACTCTGGAATGACCCAGAAACAGAGGCAATGTGAAAAACC
 TTGAGTAACTGGCACTAGAGGCAAGGCAACTACACATTGCGGAGAGGTGCTTTTCTGCTTTGGGCAAG
 TAGCAAAAGCTCGATTCCCTGCATGAGACCAATGAGATTGCAGATCAAGTATCCCGGAATATGGCGGAGA
 AGGAACAGACTTTTATCAGGTCCGAGCAGTCTAGCCATGCTGAAAAAGAACTACAAACTGGCTGAAATG
 ATCTTTTTGGAACAGAATGCTGTGGAGGAGCCATGGGCATGTACCAGGAGCTACACCGTTGGGATGAGT
 GTATCGTGTGGCTGAAGCCAAGGGCACCCAGCCCTGGAGAAGCTACGTCGTAGTTACTACCAAGTGGCT
 GATGGACACACAGCAAGAGGAGCGAGCAGGTGAACACAGGAGGCAAGGGGATGGGCTAGCAGCCATC
 AGCCTCTACCTCAAAGCTGGGCTCCCTGCCAAAGCTGCTCGGCTGGTGTGACCCGAGAGGAACTGCTAG
 CCAACACAGAGCTGGTAGAACACATCACTGCAGCCCTTATCAAGGGGAACTCTACGAAAGGCGAGTGTA
 TCTCTTTGAGAAGATTCACAATCCACAGAAAGCCCTGGAGTGTACCGTAAAGGCAACGCATTATGAAA
 GCGGTAGAGCTGGCTCGATTGGCCTTCCAGTGGAGGTGGTAAACTAGAGGAGGATGGGGGACCACC
 TGGTGACGAGCAAGCAGCTTGTGCAGCCATTAATCACTACATCGAAGCCAGGTGCTCCATTAAGGCAAT
 TGAGGCCGCCCTGGGTGCCCGCCAGTGGAAAGGCAATTTATATATTAGATCTACAGGACCGGAACACT
 GCATCCAAATACTATCCTCTCGTGGCCCAACACTATGCATCCCTGCAGGAGTATGAGATTGCTGAGGAGC
 TCTATACTAAGGGAGATCGGACAAAAGATGCCATAGACATGTACACCCAGGCTGGTCTGTTGGGAACAAGC
 CCACAAGCTGGGATGAAATGCATGAGACCAGAAGATGTGTCAGTGTATACATCACTCAGGCCCAAGGAA
 ATGGAGAAGCAGGGCAAGTACCGTGAAGGCTGAAAGGCTATATGTGACAGTACAAGAGCCTGATCTTGCCA
 TCACCATGTACAAAAGCACAAAGTTGTATGATGACATGATCCGCTGGTAGGGAAGCACCATCCAGACTCT
 CCTCAGTGATACACACCTACATCTGGGCAAGGAGCTGGAGGCTGAAGGCCGACTACAGGAGCTGAGTAC
 CACTACCTCGAGGCCAGGAATGGAAGGCAACAGTGAACATGTACCGGGCCAGTGGGCTTTGGGAAGAGG
 CCTACAGGGTGGCCAGAACTCAAGGAGGGGCTAATGCCCAAAACACGTGGCCTATCTGTGGCAAAAGAG
 CCTGGGAGGAGAGGCTGCAGTTAGACTGCTTAATAAGCTGGGACTCCTGGAAGCTGCTGTTGACCACGCT
 GCAGACAATTGCTCCTTTGAATTTGCGTTTGAACCTCTCTCGGCTGGCCCTCAAGCACAAAACCCCGAGG
 TTCATCTCAAATATGCTATGTTCTGGAGGATGAGGGTAAATTCGAAGAGGCTGAAGCTGAATTCATCAG
 AGCTGGTAAACCAAGGAGGAGTCTCATGTTTGTCCATAACCAGGATGGGAGGAGCTCAGCGTGTG
 GCTGAGGCTCACGACCCTGACAGTGTGCGCGAGGTGCTTGTGGACAGGCCCGGGGGGCTTGGAGGAGA
 AGGACTTTTCAGAAAGCAGAAGGGCTGCTGCTCCGGGCCAGAGACCAGGCTGGCCCTCAATTTATAA
 GGAGGCTGGATTATGGAGTGACGCTCTGCGCATCTGCAAGGACTATGTGCCAGCCAGCTGGAGGCTCTG
 CAGGAAGAATATGAGCGGGAAGCTACTAAGAAGGGGGCCAGGGGTGTGGAGGGATTTGTGGAACAAGCTC
 GACTGGGAGCAGGCTGGAGAGTACAGCCGTGCCGTGGACTGCTACCTCAAAGTGCAGACTCTGGAAA
 CAGCGGCTGGCGGAGAAGTGTGGATGAAGGCAGCTGAACTCTCCATCAAGTTTCTGCCTCCCAACGT
 AATATGGAAGTCGTTCTGGCTGTAGGACCCAGCTGATTGGAATTGGAAGCACAGTGCAGCTGCAGAGC
 TCTATCTGAATCTGGACCTTGTCAAGGAAGCAATCGATGCTTTCATCGAGGTTGAGGAGTGAACAAGGC
 GAAGCGTGTAGCTAAGGAGTTAGATCCCAGGTATGAAGACTATGTGACCAGCATTATAAAGAGTTCCCT
 AAGAATCAGGGCAAAGTGGACTCGCTGGTGGTGTGGATGTGATAGCTGCTTTGGACCTGTATGTGGAGC
 AGGGCCAGTGGGACAAGTGCATTGAAAACAGCTACCAAGCAGAACTACAAGATTCTGCACAAGTATGTGGC
 TTTGTATGCAACTCACTTGTATCCGGGAGGGTAGCTCTGCCAGGCATTGGCCCTGTATGTACAGCACGGA
 GCCCTGTAAACCCACAGAACTTCAATATCTACAAAAGGATCTTCACTGACATGGTGAGCTCTCTGGAA
 CCAACTGTGCCGAGGCTATCATAGCTGGGCTGATCTTCGAGATGTCTCTTCAACCTGTGTGAAAACT
 GGTGAAGTCCAGTGAAGCAACTCTCCAGCCATGAGGAGTTCAGACGATGCTGCTGATCGCTCATTAC
 TATGCCACGCTCTGCAGCCAGAGTGTCAAACAGCTGGAACCGTGGTGGCAGGCTTTCTGTTTAC
 TCTTGGCTCACACCCAGCTACTACTGTAGACAAAGCCTTCTATGAAGCAGGCTTGTGCCAAGGCAAGT
 TGGCTGGGATAACATGGCATTATCTTCTCAATCGCTTTTTGGACCTGACCGATGCAATCGAGGAAGGG
 ACTCTAGATGGCCTTGACCACTCTGATTTTCAGGATACAGACATTCCTTTGAGGTGCCACTCCCAGCTA
 AGCAGCATGTACCGGAGGCTGAGAGAGAAGAGGTTGAGACTGGGTGCTTACAGTCTCATGGACCAGCG
 GCTGGAGCAGGTTCTGCCTCGGGATGAGCGTGGCGCTACGAGGCTCCCTAGTGGCAGCGAGCACTGGT
 GTTCGAGCCCTGCCCTGCCTTATTACAGGATACCCCATTTGAGGAACAAAATGAAATTAAGCGGCCAG

GGAAGGCTGCTAACAAAGGACAACCTGGAATAAATTCCTTATGGCCATCAAGACCTCCCACAGCCCAGTGTG
CCAGGACGTGCTGAAATTCATCAGTCAGTGGTGTGGAGGGCTCCCAGCACCAGCTTTTCCTTTTCAG

ACGCGTACGCGGGCCGCTCGAGCAGAACTCATCTCAGAAGAGGATCTGGCAGCAAATGATATCCTGGATT
ACAAGGATGACGACGATAAGGTTTAA

Protein Sequence:

>RC218799 representing NM_015662
Red=Cloning site Green=Tags(s)

MHLKHLRLLSPQDGAAKVTCMAWSQNNAKFAVCTVDRVLLYDEHGERRDKFSTKPADMKYGRKSYMVK
GMAFSPDSTKIAIGQTDNIIYVYKIGEDWGDKKVICNKF IQTSAVTCLQWPAEYIIVFGLAEGKVR LANT
KTNKSSSTIYGTESYVVSLTTNCSGK GILSGHADGTIVRYFFDDEGSGESQGLVNHPCPPYALAWATNSI
VAAGCDR KIVAYGKEGHMLQTFDYSRDPQEREF TAVSSPGGQSVVLGSYDRLRVFNWIPRRSIWEEAKP
KEITNL YTITALAWKRDGSR LCVGTL CGGVEQFDCCLRRSIYK NKFELTYVGPSQVIVK NLSGTRVV LK
SHYGYEVEEVKILGKERYLVAHTSETLL LGDLNTNRLSEIAWQGS GGNEYFFENENVCMIFNAGELTLV
EYGNNDTLG SVRTEFMNPHLISVRINERQ RGTEDNKKLAYLIDIKTIAIVDLIGGYNIGTVSHESRVDW
LELNETGHKLLFRDRKLRHLHYDIESCSKTMILNFCSYMQWVPGSDVLVAQNRNSLCVWYNI EAPERVTM
FTIRGDVIGLERGGGKTEVMMEGVTTVAYTLDEGLIEFGTAIDDGNYIRATAFLETLEMPETEAMWKT
LSKLAL EARQLHIAERCFSALGQVAKARFLHETNEIADQVSREYGGEGTDFYQVRARLAML EKNYKLAEM
IFLEQNAVEEAMGMYQELHRWDECI AVAEAKGHPALEKLRRSYYQW LMDTQEEERAGELQESQGDGLAAI
SLYLKAGLPAKAAARLVL TREELL ANTELVEHITAALIKGELYERAGDLFEKIHNPQKALECYRKGNAFMK
AVELARLAFPVEVVKLEEA WGDHLVQQQLDAAINHYIEARCSIKAI EAALGARQWKKAIYILD LQDRNT
ASKYYPLVAQHYASLQEYIEAEELYTKGDRTKDAIDMYTQAGRWEQAHK LAMKCMRPEDVSVLYITQAQE
MEKQGGKYREAERLYVTVQEPDLAITMYKKHKL YDDMIRLVGKHHPDLLSDTHLHLGKELEAEGR LQEAEY
HYLEAQEWKATVNMYRASGLWEEAYRVARTQGGANAHKHVAYLWAKSLGGEAAVRL LNKLGLEAAVDHA
ADNCSFEFAFELSR LALKHKTPVHLKYAMFLEDEGKFEEAEAEFIRAGKPKEAVL M FVHNQDWEAAQRV
AEAHDPDSVAEVLVGQARGALEEKDFQKAEGLLLRAQRPLALNYYKEAGLWSDALRICKDYVPSQLEAL
QEEYEREATKKGARGVEGFVEQARHWEQAGEYSRAVDCYLKVRDSGNSGLAEKCMKAAELSIKFLPPQR
NMEVVLAVGPQLIGIGKHSAAAELYLNLDLVKEAIDAFIEGEEWNKAKRVAKELDPRYEDYVDQHYKEFL
KNQKGVD SLVGVDVIAALDL YVEQGQWDCIETATKQNYKILHKYVALYATHLIREGSSA QALALYVQHG
APANPQNFNIYKRIF TDMVSSPGTNCAEAYHSWADLRDVL FNL CENLVKSSEANSPAHEEFKTMLLIAHY
YATRSAAQSVKQLETVAARLSV SLLRHTQLLPVDKAFYEAGIAAKAVGWDNMAFIFLNRFLDLTDAIEEG
TLDGLDHSDFQD TDIPFEVPLPAKQHVPEAEREEVRDWLTVSMDQRLEQVLP RDERGAYEASLVAASTG
VRALPCLITGYPILRNKIEFKRPGKAANKDNWNKFLMAIKTSHSPVCQDVLK FISQWCGGLPSTSF SFQ

TRTRPLEQKLI SEEDLAANDILDYKDDDDKV

Chromatograms:

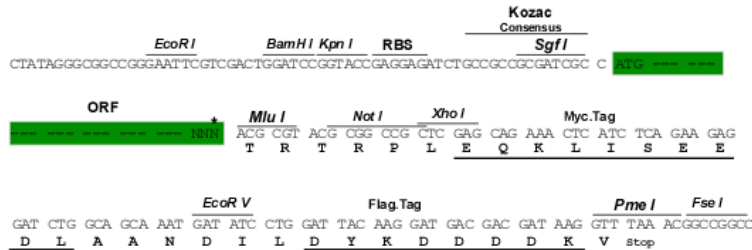
https://cdn.origene.com/chromatograms/mk8102_c01.zip

Restriction Sites:

SgfI-MluI

Cloning Scheme:

Cloning sites used for ORF Shuttling:



* The last codon before the Stop codon of the ORF

ACCN: NM_015662

ORF Size: 5247 bp

OTI Disclaimer: The molecular sequence of this clone aligns with the gene accession number as a point of reference only. However, individual transcript sequences of the same gene can differ through naturally occurring variations (e.g. polymorphisms), each with its own valid existence. This clone is substantially in agreement with the reference, but a complete review of all prevailing variants is recommended prior to use. [More info](#)
OTI Annotation: This clone was engineered to express the complete ORF with an expression tag. Expression varies depending on the nature of the gene.

Components: The ORF clone is ion-exchange column purified and shipped in a 2D barcoded Matrix tube containing 10ug of transfection-ready, dried plasmid DNA (reconstitute with 100 ul of water).

Reconstitution Method:

1. Centrifuge at 5,000xg for 5min.
2. Carefully open the tube and add 100ul of sterile water to dissolve the DNA.
3. Close the tube and incubate for 10 minutes at room temperature.
4. Briefly vortex the tube and then do a quick spin (less than 5000xg) to concentrate the liquid at the bottom.
5. Store the suspended plasmid at -20°C. The DNA is stable for at least one year from date of shipping when stored at -20°C.

RefSeq: [NM_015662.3](#)

RefSeq Size: 5430 bp

RefSeq ORF: 5250 bp

Locus ID: 26160

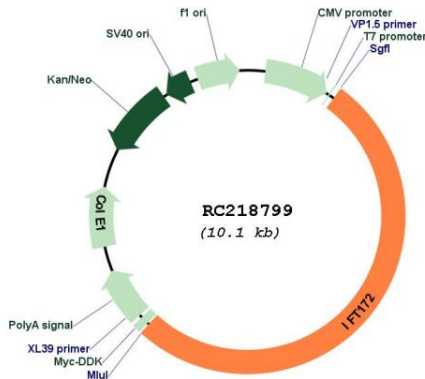
UniProt ID: [Q9UG01](#)

Cytogenetics: 2p23.3

MW: 197.6 kDa

Gene Summary: This gene encodes a subunit of the intraflagellar transport subcomplex IFT-B. Subcomplexes IFT-A and IFT-B are necessary for ciliary assembly and maintenance. Mutations in this gene have been associated with skeletal ciliopathies, with or without polydactyly, such as such short-rib thoracic dysplasias 1, 9 or 10. [provided by RefSeq, Mar 2014]

Product images:



Circular map for RC218799