

Product datasheet for **RC218794**

CMPK2 (NM_207315) Human Tagged ORF Clone

Product data:

Product Type:	Expression Plasmids
Product Name:	CMPK2 (NM_207315) Human Tagged ORF Clone
Tag:	Myc-DDK
Symbol:	CMPK2
Synonyms:	NDK; TMPK2; TYKj; UMP-CMPK2
Mammalian Cell Selection:	Neomycin
Vector:	pCMV6-Entry (PS100001)
E. coli Selection:	Kanamycin (25 ug/mL)



[View online »](#)

ORF Nucleotide Sequence:

>RC218794 representing NM_207315
 Red=Cloning site Blue=ORF Green=Tags(s)

TTTTGTAATACGACTCACTATAGGGCGGCCGGGAATTCGTCGACTGGATCCGGTACCGAGGAGATCTGCC
 GCC**CGCATCGCC**

ATGGCCTTCGCCC**CGGCTCCTGCGCGGGCCACTGT**CGGGGCGCTGCTCGGGCGCGCGGGTCTGCG
 CTGGGGCCATGGCTCCGCGCGCGCTTCGTCTGGAGCTTCCGACTGCACCCTGGCTCACTTCGCCCT
 AGGCGCCGACGCCCGCGACGACGACGCCCGGACCCCGCCTGGCGCGCTGCTGGGCCCCCGGAG
 CGCAGCTACTCGCTGTGCGTGACCCCGGACCGCGCTGCGGGGCCGGTCCGGCGCGCGCGC
 TGCACCAGCGCTGCTGCACCAGCTGCGCCGCGGCCCTTCCAGCGGTGCCAGCTGCTCAGGCTGCTG
 CTACTGCCGGGCGGCCAGGCGCGCGCACAGCAAGGCTTCTGCTGCGCGACCCCTGGATGACCT
 GACACCCGGCAAGCGCTGCTCGAGCTGCTGGGCGCTGTACAGGACACCGCCGCACTTGGGCGAGT
 TCGAGGCCGACCGCGCGCCAGCTGTGCAGCGCCTCTGGGAGGTGCAAGACGGCAGCGGCTGCAGGT
 GGGCTGCGCACAGGTCGTGCCCGTCCCGGAGCCCGCTGCACCCGGTGGTCCAGACTTGCCAGTTCC
 GTGGTCTTCCCGACCGGAAGCCCGCGGCCGTTTTGGAGGAGTGTACCTCCTTTATTCTGAAGCCC
 GGGCAGTGCTTGACCTGGTCGACCAAGTCCCAAAACAGATCCAGAAAGGAAGTTCCAGGTTGTTGCCAT
 CGAAGGACTGGATGCCACGGGTAACCACGGTACCCAGTCAAGTGGCAGATTCACTTAAGGCTGTCCCTC
 TAAAGTCAACCCTCTTGCAATGGCCAGTGGAGGAAGATCTTTGATGATGAACCAACTATCATTAGAA
 GAGCTTTTACTCTTGGGCAATATATTGTGGCTCCGAAATAGCTAAAGAATCTGCCAAATCTCTGT
 GATTGTAGACAGTACTGGCACAGCACGGCCACCTATGCCATAGCCACTGAGGTGAGTGGGGTCTCCAG
 CACCTGCCCCAGCCATCACCTGTGTACCAGTGGCCAGAGGACCTGCTCAAACCTGACCTTATCTGTC
 TGCTCACTGTGATCCTGAGGAGAGGTTGCAGAGGCTGCAGGGCCGGGCATGGAGAAGACCAGGAAGA
 AGCAGAACTTGAGGCCAACAGTGTGTTTCGTCAAAGGTAGAAATGTCTACCAGCGGATGGAGAATCCT
 GGCTGCCATGTGTTGATGCCAGCCCTCCAGAGAAAAGTCTGCAGACGGTATTAAGCCTAATCCAGA
 ATAGTTTTAGTGAACCG

ACGCGTACGCGGCCGCTCGAGCAGAACTCATCTCAGAAGAGGATCTGGCAGCAATGATATCTGGATT
 ACAAGGATGACGACGATAAGGTTTAA

Protein Sequence:

>RC218794 representing NM_207315
 Red=Cloning site Green=Tags(s)

MAFARRLLRGPLSGPLLGRGVCAGAMAPRRFVLELPDCTLAHFALGADAPGDADAPDPRLAALLGPPE
 RSYSLCVPVTPDAGCGARVRAARLHQRLHQLRRGPFQRCQLLRLLCYCPGGQAGGAQQGFLLRDPLDDP
 DTRQALLELLGACQEAPRPHLGEFEADPRGQLWQRLWEVQDGRRLQVGCQVVPVPEPLHPVVPDLPS
 VVFPDREARAVLEECTSFIPPEARAVLDLVDQCPKQIQKGFQVVAIEGLDATGKTTVTQSVADSLKAVL
 LKSPSCIGQWRKIFDDEPTIIRRAFYSLGNIVASEIAKESAKSPVIVDRYWHSTATYAIATEVSGGLQ
 HLPPAHPVYQWPEDLLKPDLLILLTVSPEERLQRLQGRGMEKTREEAELEANSVFRQKVMSYQRMENP
 GCHVVDASPSREKVLQTVLSLIQNSFSEP

TRTRPLEQKLISEEDLAANDILDYKDDDDKV

Chromatograms:

https://cdn.origene.com/chromatograms/mk8021_a08.zip

Restriction Sites:

Sgfl-Mlul

Cloning Scheme:


ACCN: NM_207315

ORF Size: 1347 bp

OTI Disclaimer: The molecular sequence of this clone aligns with the gene accession number as a point of reference only. However, individual transcript sequences of the same gene can differ through naturally occurring variations (e.g. polymorphisms), each with its own valid existence. This clone is substantially in agreement with the reference, but a complete review of all prevailing variants is recommended prior to use. [More info](#)

OTI Annotation: This clone was engineered to express the complete ORF with an expression tag. Expression varies depending on the nature of the gene.

Components: The ORF clone is ion-exchange column purified and shipped in a 2D barcoded Matrix tube containing 10ug of transfection-ready, dried plasmid DNA (reconstitute with 100 ul of water).

Reconstitution Method:

1. Centrifuge at 5,000xg for 5min.
2. Carefully open the tube and add 100ul of sterile water to dissolve the DNA.
3. Close the tube and incubate for 10 minutes at room temperature.
4. Briefly vortex the tube and then do a quick spin (less than 5000xg) to concentrate the liquid at the bottom.
5. Store the suspended plasmid at -20°C. The DNA is stable for at least one year from date of shipping when stored at -20°C.

Note: Plasmids are not sterile. For experiments where strict sterility is required, filtration with 0.22um filter is required.

RefSeq: [NM_207315.3](#), [NP_997198.2](#)

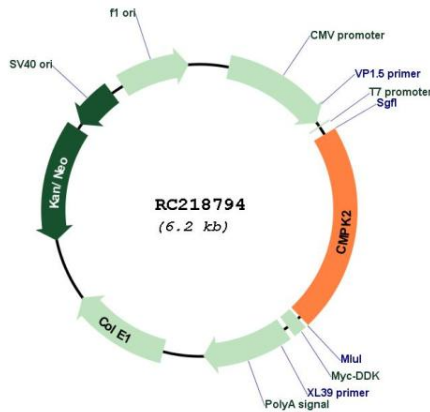
RefSeq Size: 3009 bp

RefSeq ORF: 1350 bp

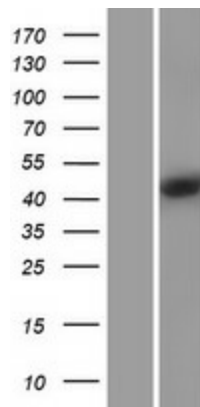
Locus ID: 129607

UniProt ID: [Q5EBM0](#)
Cytogenetics: 2p25.2
Protein Pathways: Metabolic pathways, Pyrimidine metabolism
MW: 49.3 kDa
Gene Summary: This gene encodes one of the enzymes in the nucleotide synthesis salvage pathway that may participate in terminal differentiation of monocytic cells. Multiple transcript variants encoding different isoforms have been found for this gene. [provided by RefSeq, Feb 2012]

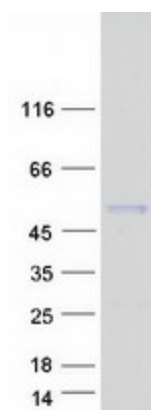
Product images:



Circular map for RC218794



Western blot validation of overexpression lysate (Cat# [LY404093]) using anti-DDK antibody (Cat# [TA50011-100]). Left: Cell lysates from untransfected HEK293T cells; Right: Cell lysates from HEK293T cells transfected with RC218794 using transfection reagent MegaTran 2.0 (Cat# [TT210002]).



Coomassie blue staining of purified CMPK2 protein (Cat# [TP318794]). The protein was produced from HEK293T cells transfected with CMPK2 cDNA clone (Cat# RC218794) using MegaTran 2.0 (Cat# [TT210002]).