

## Product datasheet for RC218789

### C18orf25 (NM\_145055) Human Tagged ORF Clone

#### Product data:

Product Type:	Expression Plasmids
Product Name:	C18orf25 (NM_145055) Human Tagged ORF Clone
Tag:	Myc-DDK
Symbol:	C18orf25
Synonyms:	Ark2N; ARKL1; RNF111L1
Mammalian Cell Selection:	Neomycin
Vector:	pCMV6-Entry (PS100001)
E. coli Selection:	Kanamycin (25 ug/mL)
ORF Nucleotide Sequence:	>RC218789 representing NM_145055 Red=Cloning site Blue=ORF Green=Tags(s)

TTTTGTAATACGACTCACTATAGGGCGGCCGGAATTCGTCGACTGGATCCGGTACCGAGGAGATCTGCC  
GCC**CGATCGCC**

ATGAAGATGGAGGAGGCAGTGGGAAAAGTTGAAGAACTCATTGAGTCCGAAGCCCCACAAAAGCATCTG  
ACAAGAGACAGCCAAGGAGGAAGATGGATCTGTAGAAGTGAATCTCAAGTTCAGAAAGATGGTGTAGC  
GGATTCTACAGTTATTTCTTCAATGCCCTGCTTGTGATGGAAGTGAAGAGGACTCTTCTGAGTCTCAG  
TTAGCATCCACAGAGAGTGACAAGCCTACAAGTGGCCGAGTTTATGAGAGTGACTCCTCTAATCACTGCA  
TGCTTTCCCTTCTCTAGTGGTCACTGGCTGATTCAGATACGTTGTCTCCGAGAAGAGAATGAACC  
CTCTCAGGCAGAAACGGCGGTAGAAGGAGACCCTTCAGGAGTGTCTGGTCCACAGTTGGGCGCAAGTCT  
AGGCGGTCCCAGTCTGAAAGTAAAAGTCCACTATGGCTGCCAAGAAAAACCGGCAATCCAGTGATAAAC  
AGAATGGCCGAGTCGCCAAGGTTAAAGGTCATCGGAGCCAAAAGCACAAGGAGAGGATCAGGCTACTGAG  
GCAGAAACGGGAGGCTGCTGCAAGGAAGAAATATAACCTGCTGCAGGACAGTAGTACCAGTGATAGTGAC  
CTGACTTGTGACTCAAGCAGGAGCTCATCAGATGATGATGAAGAGGTTTCAGGGAGCAGCAAGACAATCA  
CTGCAGAGATACCAGATGGACCTCCAGTTGTAGCTCATTATGATATGTCTGACACCAACTCTGACCCAGA  
AGTGGTAAATGTGGACAATTTATTGGCGGCTGCAGTAGTTCAGAGCAGTAATCTGTAGGCGGCCAG  
GACACAGGAGCTACCTGGAGGACCAGCGGCTTCTAGAGGAGCTGAATGCAGAGGAGTCAATTTGGATC  
CAGGATTCTAGCAAGTGAAGAAACATCTGCTGGCAATGCGCCACTCAATGAAGAAATTAACATTGCGTC  
TTCAGATAGTGAAGTAGAGATTGTGGGAGTTCAGGAACATGCAAGGTGTGTTTCATCCTCGAGGTGGTGTG  
ATTCAGAGTGTTCCTTATGGAAGCATGGCTCGGGCACGAGTATGTTAGCACCAGGCAACACAGTCAT  
GGACTGCTGTGACTCCCCAGCAGACTTGGGCTTACCAGCAGAAGTTGTTGACCTTACCTTGGATGAGGA  
TAGCAGGCGTAAATACCTACTG

**ACGCGT**ACGCGGCCGCTCGAGCAGAAACTCATCTCAGAAGAGGATCTGGCAGCAATGATATCCTGGATT  
ACAAGGATGACGACGATAAGGTTTAA



[View online »](#)

**Protein Sequence:** >RC218789 representing NM\_145055  
Red=Cloning site Green=Tags(s)

MKMEEA VGKVEEL IESEAPPKASEQETAKEEDGSVELESQVQKDG VADSTVISSMPCLLMELRRDSSESQ  
 LASTESDKPTTGRVYEDSSNHCM LSPSSGHLADSDTLSSAEENEPSQAETAVEGDP SGVSGATVGRKS  
 RRSRSESETSTMAAKNRQSSDKQNGRVAKVKGHRSQKHKERIRLLRQKREAAARKKYNLLQDSSTSDSD  
 LTCDSSTSSDDDEEVSGSSKTI TAEIPDGPVVAHYDMSD TNSDPEVVNVDNLLAAAVVQEHSNSVGGQ  
 DTGATWRTSGLLEELNAEAGHLDPGFLASDKTSAGNAPLN EEINIASSDSEVEIVGVQE HARC VHPRGV  
 IQSVSSWKHSGTQYVSTRQTQSWTAVTPQQTWASPAEVVDLTLDEDSRRKYL L

TRTRPLEQKLISEEDLAANDILDYKDDDDKV

**Chromatograms:** [https://cdn.origene.com/chromatograms/mk8057\\_f08.zip](https://cdn.origene.com/chromatograms/mk8057_f08.zip)

**Restriction Sites:** SgfI-MluI

**Cloning Scheme:**



**ACCN:** NM\_145055

**ORF Size:** 1212 bp

**OTI Disclaimer:** The molecular sequence of this clone aligns with the gene accession number as a point of reference only. However, individual transcript sequences of the same gene can differ through naturally occurring variations (e.g. polymorphisms), each with its own valid existence. This clone is substantially in agreement with the reference, but a complete review of all prevailing variants is recommended prior to use. [More info](#)

**OTI Annotation:** This clone was engineered to express the complete ORF with an expression tag. Expression varies depending on the nature of the gene.

**Components:** The ORF clone is ion-exchange column purified and shipped in a 2D barcoded Matrix tube containing 10ug of transfection-ready, dried plasmid DNA (reconstitute with 100 ul of water).

- Reconstitution Method:**
1. Centrifuge at 5,000xg for 5min.
  2. Carefully open the tube and add 100ul of sterile water to dissolve the DNA.
  3. Close the tube and incubate for 10 minutes at room temperature.
  4. Briefly vortex the tube and then do a quick spin (less than 5000xg) to concentrate the liquid at the bottom.
  5. Store the suspended plasmid at -20°C. The DNA is stable for at least one year from date of shipping when stored at -20°C.

**RefSeq:** [NM\\_145055.5](#)

**RefSeq Size:** 5443 bp

**RefSeq ORF:** 1215 bp

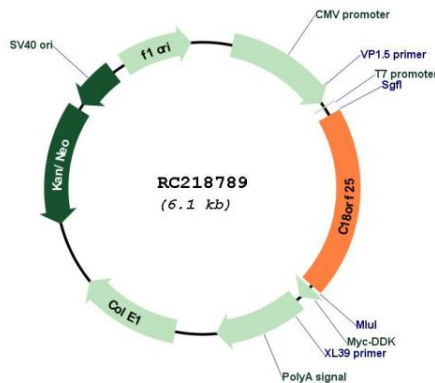
**Locus ID:** 147339

**UniProt ID:** [Q96B23](#)

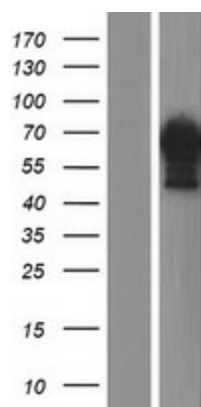
**Cytogenetics:** 18q21.1

**MW:** 43.2 kDa

**Product images:**



Circular map for RC218789



Western blot validation of overexpression lysate (Cat# [LY408071]) using anti-DDK antibody (Cat# [TA50011-100]). Left: Cell lysates from untransfected HEK293T cells; Right: Cell lysates from HEK293T cells transfected with RC218789 using transfection reagent MegaTran 2.0 (Cat# [TT210002]).