

## Product datasheet for RC218781

### PMP22 (NM\_153322) Human Tagged ORF Clone

#### Product data:

**Product Type:** Expression Plasmids  
**Product Name:** PMP22 (NM\_153322) Human Tagged ORF Clone  
**Tag:** Myc-DDK  
**Symbol:** PMP22  
**Synonyms:** CIDP; CMT1A; CMT1E; DSS; GAS-3; GAS3; HMSNIA; HNPP; Sp110  
**Mammalian Cell Selection:** Neomycin  
**Vector:** pCMV6-Entry (PS100001)  
**E. coli Selection:** Kanamycin (25 ug/mL)  
**ORF Nucleotide Sequence:** >RC218781 representing NM\_153322  
Red=Cloning site Blue=ORF Green=Tags(s)

TTTTGTAATACGACTCACTATAGGGCGGCCGGAATTCGTCGACTGGATCCGGTACCGAGGAGATCTGCC  
GCC**CGATCGCC**

ATGCTCCTCTGTTGCTGAGTATCATCGTCTCCACGTCGCGGTGCTGGTCTGCTGTTCTCCACGA  
TCGTCAGCCAATGGATCGTGGGCAATGGACACGCAACTGATCTCTGCCAGAACTGTAGCACCTCTTCTC  
AGGAAATGTCCACCACTGTTTCTCATCATCAACAAACGAATGGCTGCAGTCTGTCCAGGCCACCATGATC  
CTGTGCATCATCTTCAGATTCTGTCTGTTCTTCTGCAACTCTCACCTCACCAAGGGG  
GCAGGTTTACACTGGAATCTTCAAATTCTGCTGGTCTGTGCGTGATGAGTGCTGCGCCATCTA  
CACGGTAGGCACCCGGAGTGGCATCTCAACTCGGATTACTCCTACGGTTTCGCCTACATCTGGCCTGG  
GTGGCCTTCCCCTGGCCCTTCTCAGCGGTGTCATCTATGTGATCTTGGCAAACGCGAA

**ACGCGT**ACGCGGCCGCTCGAGCAGAACTCATCTCAGAAGAGGATCTGGCAGCAAATGATATCCTGGATT  
ACAAGGATGACGACGATAAGGTTTAA

**Protein Sequence:** >RC218781 representing NM\_153322  
Red=Cloning site Green=Tags(s)  
MLLLLLSIIVLHVAVLVLLFVSTIVSQWIVGNHATDLWQNCSTSSSGNVHHCFSPPNEWLQSVQATMI  
LSIIFSILSLFLFFCQLFTLTKGGRFYITGIFQILAGLCVMSAAAITYVRHPEWHLNSDYSYGFAYILAW  
VAFPLALLSGVIYVILRKRE

**TRTRPLEQKLI**SEEDLAANDILDYKDDDDKV

**Chromatograms:** [https://cdn.origene.com/chromatograms/mk6060\\_b04.zip](https://cdn.origene.com/chromatograms/mk6060_b04.zip)



[View online »](#)

Restriction Sites: SgfI-MluI

Cloning Scheme:



ACCN: NM\_153322

ORF Size: 480 bp

OTI Disclaimer: The molecular sequence of this clone aligns with the gene accession number as a point of reference only. However, individual transcript sequences of the same gene can differ through naturally occurring variations (e.g. polymorphisms), each with its own valid existence. This clone is substantially in agreement with the reference, but a complete review of all prevailing variants is recommended prior to use. [More info](#)

OTI Annotation: This clone was engineered to express the complete ORF with an expression tag. Expression varies depending on the nature of the gene.

Components: The ORF clone is ion-exchange column purified and shipped in a 2D barcoded Matrix tube containing 10ug of transfection-ready, dried plasmid DNA (reconstitute with 100 ul of water).

Reconstitution Method:

1. Centrifuge at 5,000xg for 5min.
2. Carefully open the tube and add 100ul of sterile water to dissolve the DNA.
3. Close the tube and incubate for 10 minutes at room temperature.
4. Briefly vortex the tube and then do a quick spin (less than 5000xg) to concentrate the liquid at the bottom.
5. Store the suspended plasmid at -20°C. The DNA is stable for at least one year from date of shipping when stored at -20°C.

RefSeq: [NM\\_153322.3](#)

RefSeq Size: 1669 bp

RefSeq ORF: 483 bp

Locus ID: 5376

UniProt ID: [Q01453](#)

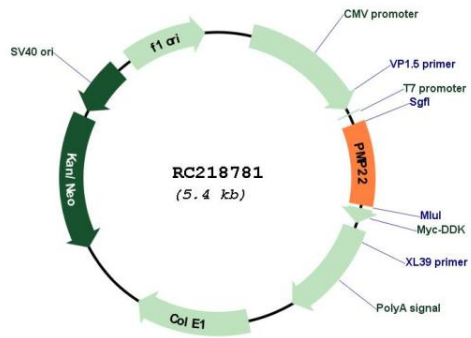
Cytogenetics: 17p12

Protein Families: Transmembrane

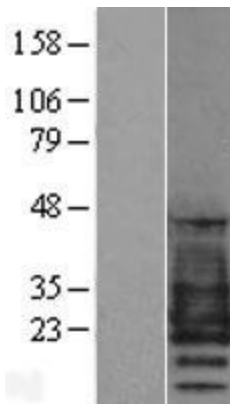
MW: 17.7 kDa

**Gene Summary:** This gene encodes an integral membrane protein that is a major component of myelin in the peripheral nervous system. Studies suggest two alternately used promoters drive tissue-specific expression. Various mutations of this gene are causes of Charcot-Marie-Tooth disease Type IA, Dejerine-Sottas syndrome, and hereditary neuropathy with liability to pressure palsies. Alternative splicing results in multiple transcript variants. [provided by RefSeq, Jul 2013]

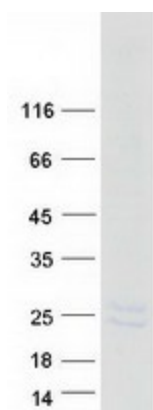
**Product images:**



Circular map for RC218781



Western blot validation of overexpression lysate (Cat# [LY403508]) using anti-DDK antibody (Cat# [TA50011-100]). Left: Cell lysates from untransfected HEK293T cells; Right: Cell lysates from HEK293T cells transfected with RC218781 using transfection reagent MegaTran 2.0 (Cat# [TT210002]).



Coomassie blue staining of purified PMP22 protein (Cat# [TP318781]). The protein was produced from HEK293T cells transfected with PMP22 cDNA clone (Cat# RC218781) using MegaTran 2.0 (Cat# [TT210002]).