

## Product datasheet for **RC218780**

### **GPR56 (ADGRG1) (NM\_201524) Human Tagged ORF Clone**

#### **Product data:**

Product Type:	Expression Plasmids
Product Name:	GPR56 (ADGRG1) (NM_201524) Human Tagged ORF Clone
Tag:	Myc-DDK
Symbol:	GPR56
Synonyms:	BFPP; BPPR; GPR56; TM7LN4; TM7XN1
Mammalian Cell Selection:	Neomycin
Vector:	pCMV6-Entry (PS100001)
E. coli Selection:	Kanamycin (25 ug/mL)



[View online »](#)

**ORF Nucleotide Sequence:**

>RC218780 representing NM\_201524  
 Red=Cloning site Blue=ORF Green=Tags(s)

TTTTGTAATACGACTCACTATAGGGCGGCCGGAATTCGTCGACTGGATCCGGTACCGAGGAGATCTGCC  
 GCC**CGGATCGCC**

ATGACTCCCCAGTCGCTGCTGCAGACGACACTGTTCTCTGCTGAGTCTGCTTTCCTGGTCCAAGGTGCC  
 ACGGCAGGGGCCACAGGGAAGACTTTCGCTTCTGCAGCCAGCGGAACCAGACACACAGGAGCAGCCTCCA  
 CTACAAACCCACACCAGACCTGCGCATCTCCATCGAGAATCCGAAGAGGCCCTCACAGTCCATGCCCT  
 TTCCCTGCAGCCACCCTGCTTCCCGATCCTTCCCTGACCCAGGGGCCTCTACCACTTCTGCCTTACT  
 GGAACCGACATGCTGGGAGATTACATCTTCTATGGCAAGCGTGACTTCTTGCTGAGTGACAAAGCCTC  
 TAGCTCCTCTGCTTCCAGCACCAGGAGAGCCTGGCTCAGGGCCCCCGCTGTTAGCCACTTCTGTC  
 ACCTCCTGGTGGAGCCCTCAGAACATCAGCCTGCCAGTGCCGCCAGTTACCTTCTCCTCCACAGTC  
 CTCCCCACACGGCCGCTCACAATGCCTCGGTGGACATGTGCGAGCTCAAAGGGACCTCCAGCTGCTCAG  
 CCAGTTCTCGAAGCATCCCCAGAAGGCCCAAGGAGGCCCTCGGCTGCCCGCCAGCCAGCAGTTGCAG  
 AGCCTGGAGTCGAAACTGACCTCTGTGAGATTCATGGGGGACATGGTGTCTTCGAGGAGACCGGATCA  
 ACGCCACGGTGTGGAAGCTCCAGCCACAGCCGGCCTCCAGGACCTGCACATCCACTCCCGGCAGGAGGA  
 GGAGCAGAGCGAGATCATGGAGTACTCGGTGCTGCTGCCTCGAACACTCTTCCAGAGGACGAAAGCCGG  
 AGGGGGGAGGCTGAGAAGAGACTCCTCCTGGTGGACTTACAGCAGCAAGCCCTGTTCCAGGACAAGAATT  
 CCAGCCAAGTCTGGGTGAGAAGTCTTGGGGATTGTGGTACAGAACACCAAAGTAGCCAACCTCACGGA  
 GCCCGTGGTGTACCTTCCAGCACCAGCTACAGCCGAAGAATGTGACTCTGCAATGTGTGTTCTGGGT  
 GAAGACCCACATTGAGCAGCCCGGGCATTGGAGCAGTGTGGTGTGAGACCGTCAGGAGAGAAAACC  
 AAACATCTGCTTCTGCAACCATTGACCTACTTTGCAGTGTGATGGTCTCCTCGGTGGAGGTGGACGC  
 CGTGCACAAGCACTACCTGAGCCTCCTCCTACGTGGGCTGTGTCGTCTCTGCCCTGGCCTGCCTTGT  
 ACCATTGCCGCCTACCTCTGCTCCAGGAGGAACTCGGGACTACACCATCAAGGTGCACATGAACCTGC  
 TGCTGGCCGCTTCTCTGCTGGACACGAGTTCTGCTCAGCGAGCCGGTGGCCCTGACAGGCTCTGAGGC  
 TGGCTGCCGAGCCAGTGCATCTTCTGCACCTTCTCCTGCTCACCTGCCTTTCTGGATGGGCCTCGAG  
 GGGTACAACCTTACCGACTCGTGGTGGAGTCTTTGGCACCTATGTCCCTGGCTACCTACTCAAGCTGA  
 GCGCCATGGGCTGGGCTTCCCCATCTTCTGGTGACGCTGGTGGCCCTGGTGGATGTGGACAACATGG  
 CCCCATCATCTTGGCTGTGCATAGGACTCCAGAGGGCGTCATCTACCCTCCATGTGCTGGATCCGGGAC  
 TCCCTGGTCAGCTACATACCAACCTGGGCCTTTCAGCCTGGTGTCTTCTGTTCAACATGGCCATGCTAG  
 CCACCATGGTGGTGCAGATCCTGCGGCTGCGCCCCACACCCAAAAGTGGTCACATGTGCTGACACTGCT  
 GGGCCTCAGCCTGGTCTTGGCCTGCCCTGGGCCTTGATCTTCTCTCTTTGCTTCTGGCACCTCCAG  
 CTTGTCGTCTCTACCTTTTTCAGCATCATCACCTCCTTCCAAGGCTTCTCATCTTCATCTGGTACTGGT  
 CCATGCGGCTGCAGGCCCGGGTGGCCCTCCCCTCTGAAGAGCAACTCAGACAGCGCCAGGCTCCCCAT  
 CAGCTCGGGCAGCACCTCGTCCAGCCGCATC

**ACGCGT**ACGCGGCCGCTCGAGCAGAACTCATCTCAGAAGAGGATCTGGCAGCAATGATATCCTGGATT  
 ACAAGGATGACGACGATAAGGTTTAA

**Protein Sequence:** >RC218780 representing NM\_201524  
Red=Cloning site Green=Tags(s)

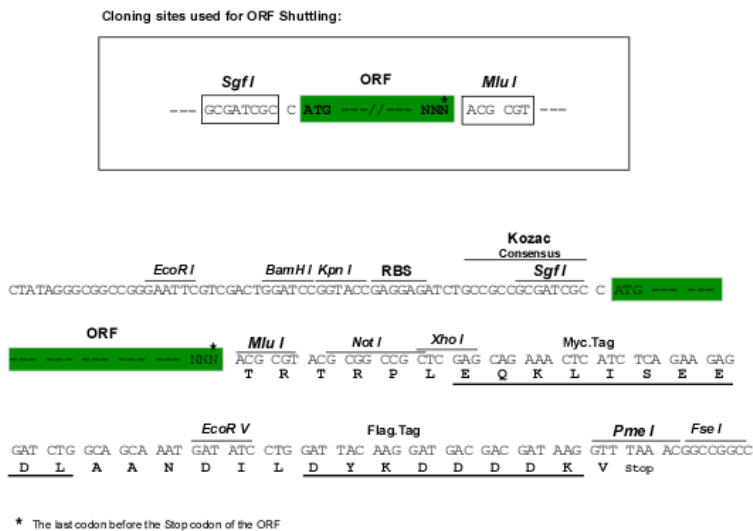
```
MTPQSLQTTLLFLLSLLFLVQGAHGRGHREDFRFCSQRNQTHRSSLHYKPTPDLRISIENSEEALTVHAP
FPAAHPASRSFPDPRGLYHFCLYWNRHAGRLHLLYGKRDFFLLSDKASSLLCFQHQEESLAQGPPLLATSV
TSWWSQPQINISLPSAASF TFSFHSPHTAAHNASVDMCELKRDQLLSQFLKHPQKASRRPSAAPASQQLQ
SLESKLT SVRFMGDMVSFEEDRINATVWKLQPTAGLQDLHIHSRQEEEQSEIMEYSVLLPRTLFRQTKGR
RGEAEKRLLLVDFSSQALFQDKNSSQVLGEKVLGIVVQNTKVANLTPVVLTFFQHQLQPKNVTLQC VFW
EDPTLSSPGHWSAGCETVRRETQTSCFCNHLTYFAVLMVSSVEVDAVHKHYLSLLSYVGCVVSAACL V
TIAAYLCSRRKPRDYTIKVMNLLLAVFLLDTSFLLSEPVALTGSEAGCRASAI FLHFSLTCLSWMGLE
GYNLYRLVVEVFGTYVPGYLLKLSAMGWGFIFLVTLVALVDVNYGPIILAVHRTPEGVIYPSMCWIRD
SLVSYITNLGLFSLVFLFNMAMLATMVVQILRLRPHTQKWSHVL TLLGLSLVLGLPWALIFFSFASGTFQ
LVVLYLFSIITSFQGLIFIWYSMRLQARGGPSPLKSNDSARLPISSGSTSSSRI
```

TRTRPLEQKLISEEDLAANDILDYKDDDDKV

**Chromatograms:** [https://cdn.origene.com/chromatograms/mk6711\\_f04.zip](https://cdn.origene.com/chromatograms/mk6711_f04.zip)

**Restriction Sites:** SgfI-MluI

**Cloning Scheme:**



**ACCN:** NM\_201524

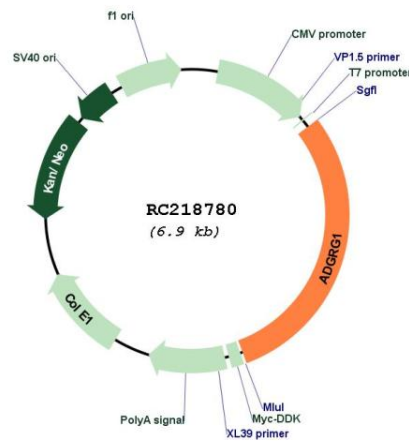
**ORF Size:** 2061 bp

**OTI Disclaimer:** The molecular sequence of this clone aligns with the gene accession number as a point of reference only. However, individual transcript sequences of the same gene can differ through naturally occurring variations (e.g. polymorphisms), each with its own valid existence. This clone is substantially in agreement with the reference, but a complete review of all prevailing variants is recommended prior to use. [More info](#)

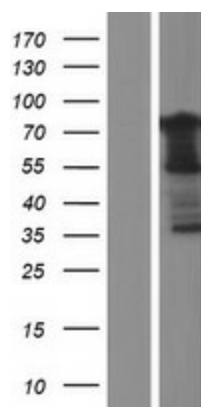
**OTI Annotation:** This clone was engineered to express the complete ORF with an expression tag. Expression varies depending on the nature of the gene.

<b>Components:</b>	The ORF clone is ion-exchange column purified and shipped in a 2D barcoded Matrix tube containing 10ug of transfection-ready, dried plasmid DNA (reconstitute with 100 ul of water).
<b>Reconstitution Method:</b>	<ol style="list-style-type: none"> <li>1. Centrifuge at 5,000xg for 5min.</li> <li>2. Carefully open the tube and add 100ul of sterile water to dissolve the DNA.</li> <li>3. Close the tube and incubate for 10 minutes at room temperature.</li> <li>4. Briefly vortex the tube and then do a quick spin (less than 5000xg) to concentrate the liquid at the bottom.</li> <li>5. Store the suspended plasmid at -20°C. The DNA is stable for at least one year from date of shipping when stored at -20°C.</li> </ol>
<b>RefSeq:</b>	<u><a href="#">NM_201524.4</a></u>
<b>RefSeq Size:</b>	3919 bp
<b>RefSeq ORF:</b>	2064 bp
<b>Locus ID:</b>	9289
<b>UniProt ID:</b>	<u><a href="#">Q9Y653</a></u>
<b>Cytogenetics:</b>	16q21
<b>Protein Families:</b>	Druggable Genome, GPCR, Transmembrane
<b>MW:</b>	74.3 kDa
<b>Gene Summary:</b>	<p>This gene encodes a member of the G protein-coupled receptor family and regulates brain cortical patterning. The encoded protein binds specifically to transglutaminase 2, a component of tissue and tumor stroma implicated as an inhibitor of tumor progression. Mutations in this gene are associated with a brain malformation known as bilateral frontoparietal polymicrogyria. Alternative splicing results in multiple transcript variants. [provided by RefSeq, Feb 2014]</p>

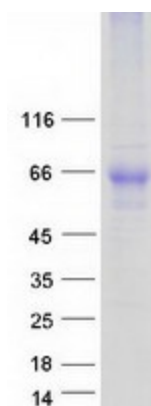
### Product images:



Circular map for RC218780



Western blot validation of overexpression lysate (Cat# [LY404437]) using anti-DDK antibody (Cat# [TA50011-100]). Left: Cell lysates from untransfected HEK293T cells; Right: Cell lysates from HEK293T cells transfected with RC218780 using transfection reagent MegaTran 2.0 (Cat# [TT210002]).



Coomassie blue staining of purified ADGRG1 protein (Cat# [TP318780]). The protein was produced from HEK293T cells transfected with ADGRG1 cDNA clone (Cat# RC218780) using MegaTran 2.0 (Cat# [TT210002]).