

## Product datasheet for RC218777

### TMEM44 (NM\_138399) Human Tagged ORF Clone

#### Product data:

Product Type:	Expression Plasmids
Product Name:	TMEM44 (NM_138399) Human Tagged ORF Clone
Tag:	Myc-DDK
Symbol:	TMEM44
Mammalian Cell Selection:	Neomycin
Vector:	pCMV6-Entry (PS100001)
E. coli Selection:	Kanamycin (25 ug/mL)
ORF Nucleotide Sequence:	>RC218777 representing NM_138399 Red=Cloning site Blue=ORF Green=Tags(s)

TTTTGTAATACGACTCACTATAGGGCGGCCGGAATTCGTCGACTGGATCCGGTACCGAGGAGATCTGCC  
GCC**CGATCGCC**

ATGGGGGAGGGCGCCAGCCCCGCGCCCGCTCTGGGACTGGGACTACCTGGACCGCTGCTTCGCCCCG  
ACCGCTCTGCATCTCCTTCGGCCTGTGGATCTGCGCCTCCTCCTGTGGATCGCCGCCACGCGCTGCT  
TCTCTATCTGAGATGTGCACAGAAACCCAGACAGGACCAGTCGGCACTGTGTGCTGCGTGTGCCTCCTG  
ACCAGTCTGTGTGACACCGTCGGGGCTCTCTGGCCAGACAGCTCACAATCCAGGTTTTCACTGGTGCCT  
ACCTAGCAGCTATTGACTTAGTGAATTTATGTTCACTTCTTCCCAGTCTGTGGATCCAATTAAGTC  
TAATTCAGATCGGGAAGCCCGAGAGAGGAAGAGGAGCGGCAGCTCAGGGCCAGTGTGTTTTGCCCTGGCC  
CTGCCGCTGAGCCTGGGCCGCTGCTGGGCTCTGTGGGTTGCTGTCCCGAAGGCTTCAGCCACCATCCGGG  
GGCCACAGCGGAGGCTGCTAGCGAGCCTGCTGCAGGAAAATACTGAGATCCTCGGCTACCTGCTGGGTAG  
CGTTGCTGCCTTTGGCTCCTGGGCTTCTCGGATCCCCCTCTCTCCAGAATTTGCCGGGGGAAGACATTT  
CCCTCCATCCACCTGTGGACCCGGCTCCTGTGCGCCCTGGCTGGCCTCCTCTATGCCTCGGCCATTGTGG  
CCCACGACCAGCACCTGAGTACCTGCTGCGGGCCACACCCTGGTTCTGACCTCCCTCGGCCGTGCGGC  
ACTGGACCTCGCTATTATTTTCTTTCGTGTGTGATGAAGAGCAAGATGAGACAGGCCTTAGGATTTGCC  
AAGGAAGCCAGAGAGAGCCCTGACACCAAGCCCTTTTGACCTGTGCAGAGAAAGAGGAAGAAAACCAGG  
AGAATTTGGATTGGGTGCCTCTCACCACACTGTACACTGCAAGTCACTGAGGACAATGACAGCAATCAG  
TCGCTACATGGAGCTGACCATCGAGCCTGTGCAGCAGGCAGGCTGCAGTGCCACCAGGCTGCCAGGTGAC  
GGCAGACGAGCGCCGAGATGCGTCCCTGCAGGACCCCGTGTACCCTCCCGTTTCAGGTCATCCGGG  
CCCGGGTGTCTTCCGGCAGCTCCTCTGAGGTCTCCTCCATCAACTCCGACCTGGAGAAGTATTGGGAGGC  
CCTAAACTCGGAGCAGTGGGACCCTGAAGATGTGAACCTCGAAGGCAGCAAGAAAATGTGGAGCTACTG  
GGATCCCAGGTGCACCAGGACTCTGTGAGGACAGCACACCTGAGTGATGATGAT

**ACGCGT**ACGCGGCCGCTCGAGCAGAACTCATCTCAGAAGAGGATCTGGCAGCAAATGATATCCTGGATT  
ACAAGGATGACGACGATAAGGTTTAA



**Protein Sequence:** >RC218777 representing NM\_138399  
Red=Cloning site Green=Tags(s)

MGEAPSPAPALWDWDYLDRCFARHRVCISFGLWICASSCWIAAHALLLYLRCAQKPRQDQSALCAACCLL  
 TSLCDTVGALLARQLTIQVFTGAYLAAIDL VNFMFILFPVCGSKFKSNSDREARERKRRRQLRASVFALA  
 LPLSLGPCWALWVAVPKASATIRGPQRRLLASLLQENTEILGYLLGSVAAFGSWASRIPLSRICRGKTF  
 PSIHLWTRLLSALAGLLYASAIVAHDQHPEYLLRATPWFLTSLGRAALDLAIIFLSCVMKSKMRQALGFA  
 KEARESPTQALLTCAEKEEENQENLDWVPLTTL SHCKSLRTMTAISRYMELTIEPVQQAGCSATRLPGD  
 GQTSAGDASLQDPPSYPPVQVIRARVSSGSSSEVSSINS DLEKYWEALNSEQWDPEDVNL EGSKENVELL  
 GSQVHQDSVRTAHLSDDD

TRTRPLEQKLISEEDLAANDILDYKDDDDKV

**Chromatograms:** [https://cdn.origene.com/chromatograms/mk8060\\_a07.zip](https://cdn.origene.com/chromatograms/mk8060_a07.zip)

**Restriction Sites:** SgfI-MluI

**Cloning Scheme:**



**ACCN:** NM\_138399

**ORF Size:** 497 bp

**OTI Disclaimer:** The molecular sequence of this clone aligns with the gene accession number as a point of reference only. However, individual transcript sequences of the same gene can differ through naturally occurring variations (e.g. polymorphisms), each with its own valid existence. This clone is substantially in agreement with the reference, but a complete review of all prevailing variants is recommended prior to use. [More info](#)

**OTI Annotation:** This clone was engineered to express the complete ORF with an expression tag. Expression varies depending on the nature of the gene.

**Components:** The ORF clone is ion-exchange column purified and shipped in a 2D barcoded Matrix tube containing 10ug of transfection-ready, dried plasmid DNA (reconstitute with 100 ul of water).

**Reconstitution Method:**

1. Centrifuge at 5,000xg for 5min.
2. Carefully open the tube and add 100ul of sterile water to dissolve the DNA.
3. Close the tube and incubate for 10 minutes at room temperature.
4. Briefly vortex the tube and then do a quick spin (less than 5000xg) to concentrate the liquid at the bottom.
5. Store the suspended plasmid at -20°C. The DNA is stable for at least one year from date of shipping when stored at -20°C.

**RefSeq:** [NM\\_138399.5](#)

**RefSeq Size:** 2358 bp

**RefSeq ORF:** 1317 bp

**Locus ID:** 93109

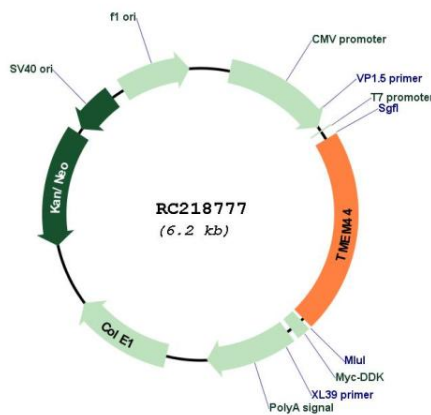
**UniProt ID:** [Q2T9K0](#)

**Cytogenetics:** 3q29

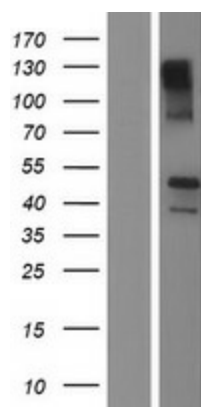
**Protein Families:** Transmembrane

**MW:** 48.1 kDa

**Product images:**



Circular map for RC218777



Western blot validation of overexpression lysate (Cat# [LY408661]) using anti-DDK antibody (Cat# [TA50011-100]). Left: Cell lysates from untransfected HEK293T cells; Right: Cell lysates from HEK293T cells transfected with RC218777 using transfection reagent MegaTran 2.0 (Cat# [TT210002]).