

## Product datasheet for RC218775

### NLRP8 (NM\_176811) Human Tagged ORF Clone

#### Product data:

Product Type:	Expression Plasmids
Product Name:	NLRP8 (NM_176811) Human Tagged ORF Clone
Tag:	Myc-DDK
Symbol:	NLRP8
Synonyms:	CLR19.2; NALP8; NOD16; PAN4
Vector:	pCMV6-Entry (PS100001)
E. coli Selection:	Kanamycin (25 ug/mL)
Cell Selection:	Neomycin
ORF Nucleotide Sequence:	>RC218775 representing NM_176811 Red=Cloning site Blue=ORF Green=Tags(s)

TTTTGTAATACGACTCACTATAGGGCGGCCGGAATTCGTCGACTGGATCCGGTACCGAGGAGATCTGCC  
GCC**CGATCGCC**

ATGAGTGACGTGAATCCACCCTCTGACACCCCATTCCTTTTCATCCTCCTCCACTCACAGTTCTCATA  
TTCGCGCCTGGACATTCTTGTACTCCCGGCTCCCATGTGAAAATGGGGTCATGCTGTACATGAGAAA  
CGTGAGCCATGAGGAGCTACAACGGTTCAAGCAGCTCTTACTGACTGAGCTCAGTACTGGCACCATGCC  
ATCACCTGGGACCAGGTGAGACAGCCAGCTGGGCAAGGTTGTTTCATCTTTGATAGAGCGTTTCCCTG  
GACGACGCGCTTGGGATGTGACTTCAACATCTTTGCCATTATGAACTGTGATAAAATGTGTGTGTAGT  
CCGAGAGAGATAAATGCCATTCTGCCTACCTTGAACAGAGGACTTGAATGTGGGAGAAAACACAGGTG  
AATCTGGAGGAAGGAGAACTGTGTAATAACGGCGGTATAAATCGAATGTGATGGAAAAGTTTTCCCA  
TATGGGACATTACGACTTGGCCTGGAAACCAGAGGGACTTCTTACCAAGGTGTACACAGGCACGAGGA  
GTACTTACCATGTCTGCTTCTGCCAAAAGACCCAGGGTAGACAGCCAAAGACCGTGGCCATACAGGA  
GCTCCTGGGATCGGAAAAACAATCTGGCAAAAAGGTGATGTTTGAGTGGCCAGAAAACAAGTTCTACG  
CCACAAGCGCTGGTGTGCTTTCTACTTCCATTGCCAAGAGGTGAACAGACGACAGACCAGACTTCTC  
CGAGCTGATTGAGCAAAAAGTGGCCTGGATCTCAGGACCTCGTGTCAAAGATTATGTCCAACCCGACCAA  
CTTCTGCTGCTTGGATGGCTTTGAGGAGCTCACATCTACCCTATTGACAGACTGGAGGACCTGAGTG  
AAGACTGGAGGCAGAAATGCCTGGGTCTGTCTACTGAGCAGTTTGTGAGCAAAACGATGCTTCCAGA  
GGCCACGCTACTGATCATGATAAGATTTACCTCTTGGCAGACATGCAAGCCCTTGTGAAATGTCCCTCT  
CTCGTAACCTTCCGGGGTTAATACGATGAAAAAATCAAGTATTTCCAGATGTATTTGGACACACAG  
AGGAGGGAGACCAAGTCTTGAGTTTCGCCATGGAAAACACCATTCTTCTCCATGTGCCGGTCCCTGT  
GGTTTGTGGATGGTCTGCTCTGGTCTGAAACAGCAAATGGAGAGAGGAAACAATCTCACACAGTCATGT  
CCAAATGCCACCTCTGTGTTTCGTCGGTATATTTCTAGCTTGTTCCACAGAGCTGAGAACTTTTCCA  
GAAAGATCCACCAAGCACAACCTGGAAGTCTGTGTCACTTGGCCGACAGCAGCATGTGGCACAGGAAATG  
GGTGTAGGTAAGAAGATCTTGAGGAAGCAAGCTGGATCAGACGGGAGTACCAGCCTTCTTGGCATG  
AGTATTCTTCGGAGAATTGCAGGTGAGGAAGACCACTATGTCTTTACCCTCGTGACTTTTCAGGAATTTT



[View online >](#)

TTGCGGCCTGTTTTATGTTCTCTGTTTCCCACAAAGACTCAAAAATTTTCATGTGTTGAGCCACGTGAA  
TATCCAGCGCCTGATAGCGAGTCCCAGAGGAAGCAAAAGCTATCTCTCACATGGGACTTTTCTTATTC  
GGTTTTCTGAACGAGGCCTGCGCTTCGGCCGTGGAACAGTCATTCCAATGCAAGGTGCTTTTCGGTAATA  
AGAGGAAACTGCTGAAAGTCATACCTCTGTTGCATAAATGTGACCACCTTCCGGGCAGTGGGGTCCC  
GCAGTTATTCTACTGTCTGCATGAAATCCGGGAGGAAGCCTTGTAAAGCAAGCCCTAAATGATTATCAT  
AAAGTGTCTTGAGAATTGGCAACAACAAGAAGTTCAAGTGTCTGCTTTTTGCCTGAAGCGGTGTCAAT  
ATTTGCATGAGGTGGAAGTACCCTGACCTGAACTTCATGAACGTGTGGAAGCTCAGCTCCAGCTCCCA  
TCTGGCTCTGAAGCGCCAGAGAGCAATGGGCTGCATCGTTGGTGGCAAGACTTATGCTCTGTGTTGCA  
ACGAATGATAAGCTGGAAGTCTGACTATGACCAACAGTGTGTTGGGGCCTCCTTTTTGAAGGCTCTCG  
CGGCCGACTGAGGCACCCTCAGTGCAAAGTCAAAAAGTACTCCTAAGGCGTGTGAATAGCACCATGTT  
GAACCAGGACTTAATCGGTGTTTTGACGGGAACCAGCATCTGAGATACTGGAAATACAACATGTGGAA  
GTGGAGTCCAAGCTGTGAAGCTTCTATGCAGGGTGTGAGATCCCCCGGTGCCGTCTGCAGTGTCTCA  
GGTTGGAAGACTGCTTGGCCACCCTAGAATTTGGACTGATCTTGCCAATAATCTCAAGGTAACGGGCA  
TCTAAAGACTCTCATACTAAGAAAAAATCCCTGGAGAAGTGTGGGGCGTATTACCTGTCTGTGGCCAG  
CTGGAGAGGCTGTGATAGAGAAGTCAACCTTACACAGCTTACTGTGAAAGCCTTGCCCTCTGTCTCA  
GGCAGAGTAAGATGCTGACCCACCTGAGCTTGGCAGAAAACGCCTTGAAGATGAAGGGGCAAGCATAT  
TTGGAATGCCCTGCCACACCTGAGATGTCTCTGCAGAGGCTGGTACTGAAAGTGTGACTTGACCTTT  
AATTGCTGTGAGGATATGATCTCTGCGCTCTGTAAAAATAAAACCTGAAAAGTCTTGACCTAAGTTTTA  
ATAGCCTGAAGGATGATGGGGTATCCTGCTGTGTGAGGCCCTGAAGAACCCTGACTGTACATTACAGAT  
CCTGGAGCTGAAAAGTGCCTGTTACCTCCATCTGCTGCCAGGCCATGGCTTCCATGCTCCGAAAAAC  
CAACATCTGAGACATCTGGACTTGAAGCAAGAATGCGATTGGAGTCTATGGTATTCTGACCTGTGCGAGG  
CCTTCTCAAGCCAAAAGAAGAGAGAAGAGTCAATTTCTGTATTCTGCTGGACTCGAATAACTAGCTT  
CTCCCCAACTCCTCACCACCCGACTTACGGGAAAAAGTACTGCCTATCCCAGATTAATCCT

ACGCGTACGCGGCCGCTCGAGCAGAAACTCATCTCAGAAGAGGATCTGGCAGCAATGATATCCTGGATT  
ACAAGGATGACGACGATAAGGTTTAA

**Protein Sequence:**

>RC218775 representing NM\_176811  
Red=Cloning site Green=Tags(s)

MSDVNPPSDTPIPFSSSTHSSHIPPWFSCYPGSPCENGVMLYMRNVSHEELQRFKQLLLTELSTGMT  
ITWDQVETASWAEVHLLIERFPGRRWDVTSNIFAIMNCDKMCVVVREINAILPTLEPEDLNGETQV  
NLEEGESGKIRRYKSNVMEKFFPIWDITWPGNQDFDYQGVHRHEEYLPCLLLPKRPQGRQPKTVAIQG  
APGIGKITLAKKVMFEWARNKFYAHKRWCAFYFHCQEVNQTDDQSFSELIEQKWPGSQDLVSKIMSKPDQ  
LLLLLDGFEELSTLIDRLEDLSEDWRQKLPQSVLLSLLSKTMLPEATLLIMIRFTSWQTKPLKCP  
LVTLPGFNTMEKIKYFQMYFGHTEEGDQVLSFAMENTILFSMCRVPVVCWVMVCSGLKQQMERGNL  
TQSCPNATSVFVRYISSLPTRAENFSRKIHQAQLEGLCHLAADSMWHRKWVLGKEDLEEAKLDQTV  
AFLGM SILRRIAGEEDHYVFTLVTFQEFAALFYVLCFPQRLKNFHVLSHVNIQRLIASPRGSKSYL  
SHMGLFLFGFLNEACASAVEQSFQCKVSFGNKRLLKVIPLLHKCDPPSPGSGVPQLFYCLHEIREE  
AFVSQLNDYHKVYLRIGNNKEVQSAFCLKRQYLHEVELTVTLNFMNVWKLSSSSHPGSEAPESNGL  
HRWQDLCSVFA TNDKLEVL TMTNSVLGPPFLKALAAALRHPQCKLQKLLRRVNSTMLNQLD  
IGVL TGNQHLRYLEIQHVE VESKAVKLLCRVLRSPRCRLQCLREDCLATPRIWTDLGNLQGNH  
LKTLLRKNLENCGAYYSVAQLERLSIENCLTQLTCESLASCLRQSKMLTHLSLAENALKDEGAK  
HIWNALPHLRCPQLRVLKCDLTFNCCQDMISALCKNKTLSLDL SFNSLKDDGVILLCEALKNP  
DCTLQILELENCLFTSICQAMASMLRKN QHLRHLDSLKNAIGVYGILTLCEAFSSQKKREEVIF  
CIPAWTRITSFSPTPHPPDFTGKSDCLSQINP

TRTRPLEQKLISEEDLAANDILDYKDDDDKV

**Chromatograms:**

[https://cdn.origene.com/chromatograms/mg3458\\_c01.zip](https://cdn.origene.com/chromatograms/mg3458_c01.zip)

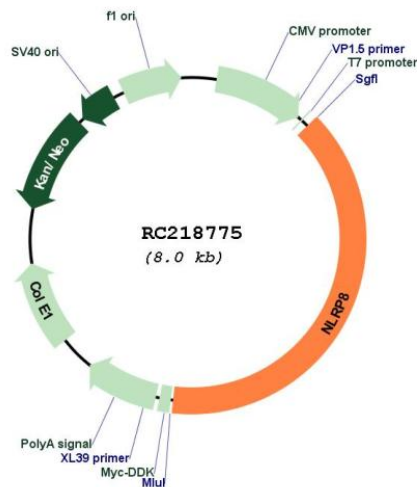
**Restriction Sites:**

Sgfl-Mlul

Cloning Scheme:



Plasmid Map:



ACCN:

NM\_176811

ORF Size:

3144 bp

OTI Disclaimer:

The molecular sequence of this clone aligns with the gene accession number as a point of reference only. However, individual transcript sequences of the same gene can differ through naturally occurring variations (e.g. polymorphisms), each with its own valid existence. This clone is substantially in agreement with the reference, but a complete review of all prevailing variants is recommended prior to use. [More info](#)

OTI Annotation:

This clone was engineered to express the complete ORF with an expression tag. Expression varies depending on the nature of the gene.

**Components:** The ORF clone is ion-exchange column purified and shipped in a 2D barcoded Matrix tube containing 10ug of transfection-ready, dried plasmid DNA (reconstitute with 100 ul of water).

**Reconstitution Method:**

1. Centrifuge at 5,000xg for 5min.
2. Carefully open the tube and add 100ul of sterile water to dissolve the DNA.
3. Close the tube and incubate for 10 minutes at room temperature.
4. Briefly vortex the tube and then do a quick spin (less than 5000xg) to concentrate the liquid at the bottom.
5. Store the suspended plasmid at -20°C. The DNA is stable for at least one year from date of shipping when stored at -20°C.

**RefSeq:** [NM\\_176811.2](#), [NP\\_789781.2](#)

**RefSeq Size:** 3934 bp

**RefSeq ORF:** 3147 bp

**Locus ID:** 126205

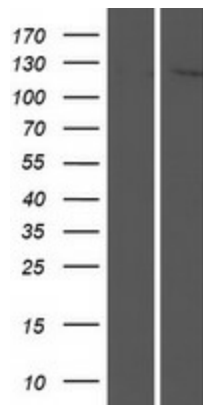
**UniProt ID:** [Q86W28](#)

**Cytogenetics:** 19q13.43

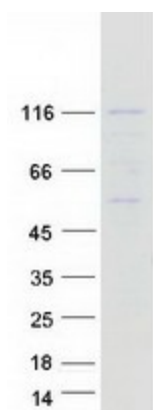
**MW:** 119.2 kDa

**Gene Summary:** This gene encodes a member of the nucleotide-binding oligomerization domain/ leucine rich repeat/ pyrin domain containing (NLRP) subfamily, which belongs to the Nod-like receptor family of proteins. NLRP genes play roles in the mammalian innate immune system through inflammasome formation and activation of caspases. In addition, NLRP genes have been found to function during mammalian reproduction. Consistent with a function during human preimplantation development, this gene is expressed at high levels in oocytes with decreased levels in embryos. Alternative splicing results in multiple transcript variants. [provided by RefSeq, Sep 2016]

### Product images:



Western blot validation of overexpression lysate (Cat# [LY406131]) using anti-DDK antibody (Cat# [TA50011-100]). Left: Cell lysates from untransfected HEK293T cells; Right: Cell lysates from HEK293T cells transfected with RC218775 using transfection reagent MegaTran 2.0 (Cat# [TT210002]).



Coomassie blue staining of purified NLRP8 protein (Cat# [TP318775]). The protein was produced from HEK293T cells transfected with NLRP8 cDNA clone (Cat# RC218775) using MegaTran 2.0 (Cat# [TT210002]).