

Product datasheet for RC218770

STK19 (NM_004197) Human Tagged ORF Clone

Product data:

Product Type: Expression Plasmids
Product Name: STK19 (NM_004197) Human Tagged ORF Clone
Tag: Myc-DDK
Symbol: STK19
Synonyms: D6S60; D6S60E; G11; HLA-RP1; RP1
Mammalian Cell Selection: Neomycin
Vector: pCMV6-Entry (PS100001)
E. coli Selection: Kanamycin (25 ug/mL)
ORF Nucleotide Sequence: >RC218770 representing NM_004197
 Red=Cloning site Blue=ORF Green=Tags(s)

TTTTGTAATACGACTCACTATAGGGCGCCGGGAATTCGTCGACTGGATCCGGTACCGAGGAGATCTGCC
 GCC**CGATCGCC**

ATGCAAAAGTGGTTTTCTGCTTTCGATGATGCAATCATTACGCGACAGTGGCGGGCAAACCCCTCCCGGG
 GCGGGGGAGGTGTGAGCTTCACGAAGGAGGTTGACACCAACGTGGCCACCGGCCCCCTCCACGCCGCCA
 ACGAGTCCCCGGGCGTGCCTGGAGGGAGCCAATCCGCGCCGGCGTGGGCCCCGGCCTGGCGGA
 GGTGATGCTGGAGGGACCGCCGGGAGACCGTACGTCACTGCTCTGCGCCGGAAGACCCTATTTTCAGT
 TCTCTTCCCTCCATTCTACCCCTTCCCGGTACCATAAAATCCCGGGATATGAGCTGGAAGAGGCATCA
 CCTGATCCCGGAGACCTTGGAGTTAAGAGGCGCGGAAGCGAGGGCCTGTGGAGTCGGATCCTCTTCGG
 GGTGAGCCAGGGTCGGCGCGCGCGGCTGTCTCAGAACTCATGCAGCTGTTCCCGCGAGGCCTGTTTGAGG
 ACGCGCTGCCGCCATCGTGTGAGGAGCCAGGTGTACAGCCTTGTGCCTGACAGGACCGTGGCCGACCG
 GCAGCTGAAGGAGCTTCAAGAGCAGGGGAGATCAGAATCGTCCAGCTGGGCTTCGACTTGGATGCCAT
 GGAATTATCTTCACTGAGGACTACAGGACCAGAGTCTCAAGGCCTGTGATGGCCGACCGTATGTGGGG
 CAGTGCAGAAATTTCTAGCTTCACTACTCCAGCCTGTGGGGACCTTAGTTTCCAGCAGGACCAAATGAC
 ACAGACCTTTGGCTTCAAGGACTCAGAAATCACGCATCTGGTGAATGCTGGAGTCTCACCGTCCGAGAT
 GCTGGGAGCTGGTGGCTAGCTGTGCCTGGAGCTGGGAGATTCATCAAGTACTTTGTTAAAGGGCCCGGAGG
 CTGTCTTAGCATGGTCCGGAAGGCAAAGTACCGGAACTGCTCCTATCAGAGCTCTGGGCGGGCGGGC
 GCCTGTGCTGGTGGCGCTTGGCCTCACCTACCATGTGCACGACCTCATTGGGGCCAGCTAGTGGACTGC
 ATCTCTACCATTTCAGGAACCTCTCCGCTGCCAGAGACA

ACGCGTACGCGGCCGCTCGAGCAGAACTCATCTCAGAAGAGGATCTGGCAGCAAATGATATCCTGGATT
 ACAAGGATGACGACGATAAGGTTTAA



[View online »](#)

Protein Sequence: >RC218770 representing NM_004197
Red=Cloning site Green=Tags(s)

MQKWFSAFDDAIQRQWRANPSRGGGGVSFTKEVDTNVATGAPRRQRPVGRACPWREPIRGRRGARPGG
 GDAGGTPGETVRHCSAPEDIIFRSSLHSYFPFGTIKSRDMSWKRHHLIPETFGVKRRRKRGPVESDPLR
 GEPGSARAASVSELMQLFPRGLFEDALPPIVLRSSQVYSLVPDRTVADRQLKELQEQGEIRIVQLGFDLDAH
 GIIFTEDYRTRVLKACDGRPYAGAVQKFLASVLPACGDLDFQDQMTQTFGFRDSEITHLVNAGVLTVRD
 AGSWWLAVPGAGRFIKYFVKGRQAVLSMVRKAKYRELLSELLGRRAPVVRLGLTYHVHDLIGAQLVDC
 ISTTSGTLLRLPET

TRTRPLEQKLISEEDLAANDILDYKDDDDKV

Chromatograms: https://cdn.origene.com/chromatograms/mg4122_d01.zip

Restriction Sites: SgfI-MluI

Cloning Scheme:



* The last codon before the Stop codon of the ORF

ACCN: NM_004197

ORF Size: 1092 bp

OTI Disclaimer: The molecular sequence of this clone aligns with the gene accession number as a point of reference only. However, individual transcript sequences of the same gene can differ through naturally occurring variations (e.g. polymorphisms), each with its own valid existence. This clone is substantially in agreement with the reference, but a complete review of all prevailing variants is recommended prior to use. [More info](#)

OTI Annotation: This clone was engineered to express the complete ORF with an expression tag. Expression varies depending on the nature of the gene.

Components: The ORF clone is ion-exchange column purified and shipped in a 2D barcoded Matrix tube containing 10ug of transfection-ready, dried plasmid DNA (reconstitute with 100 ul of water).

Reconstitution Method:

1. Centrifuge at 5,000xg for 5min.
2. Carefully open the tube and add 100ul of sterile water to dissolve the DNA.
3. Close the tube and incubate for 10 minutes at room temperature.
4. Briefly vortex the tube and then do a quick spin (less than 5000xg) to concentrate the liquid at the bottom.
5. Store the suspended plasmid at -20°C. The DNA is stable for at least one year from date of shipping when stored at -20°C.

RefSeq: [NM_004197.1](#), [NP_004188.1](#)

RefSeq Size: 1620 bp

RefSeq ORF: 765 bp

Locus ID: 8859

UniProt ID: [P49842](#)

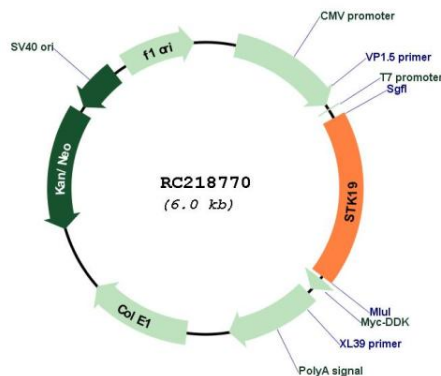
Cytogenetics: 6p21.33

Protein Families: Druggable Genome, Protein Kinase

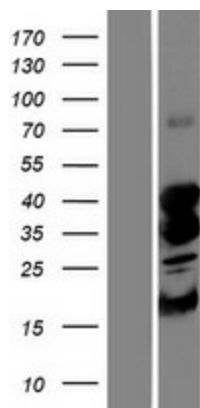
MW: 40.3 kDa

Gene Summary: This gene encodes a serine/threonine kinase which localizes predominantly to the nucleus. Its specific function is unknown; it is possible that phosphorylation of this protein is involved in transcriptional regulation. This gene localizes to the major histocompatibility complex (MHC) class III region on chromosome 6 and expresses two transcript variants. [provided by RefSeq, Jul 2008]

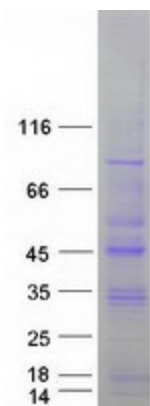
Product images:



Circular map for RC218770



Western blot validation of overexpression lysate (Cat# [LY418155]) using anti-DDK antibody (Cat# [TA50011-100]). Left: Cell lysates from untransfected HEK293T cells; Right: Cell lysates from HEK293T cells transfected with RC218770 using transfection reagent MegaTran 2.0 (Cat# [TT210002]).



Coomassie blue staining of purified STK19 protein (Cat# [TP318770]). The protein was produced from HEK293T cells transfected with STK19 cDNA clone (Cat# RC218770) using MegaTran 2.0 (Cat# [TT210002]).