

Product datasheet for RC218769

ZMAT4 (NM_024645) Human Tagged ORF Clone

Product data:

Product Type: Expression Plasmids
 Product Name: ZMAT4 (NM_024645) Human Tagged ORF Clone
 Tag: Myc-DDK
 Symbol: ZMAT4
 Mammalian Cell Selection: Neomycin
 Vector: pCMV6-Entry (PS100001)
 E. coli Selection: Kanamycin (25 ug/mL)
 ORF Nucleotide Sequence: >RC218769 representing NM_024645
 Red=Cloning site Blue=ORF Green=Tags(s)

TTTTGTAATACGACTCACTATAGGGCGGCCGGAATTCGTCGACTGGATCCGGTACCGAGGAGATCTGCCGCCGCGATCGCC

ATGAAGTCCTCCGATATTGATCAGGATTTATTCACAGACAGTTACTGCAAGGTGTGCAGTGCACAGCTGATCTCCGAATCGCAGCGTGTGGCCCACTACGAGAGTCGAAAACATGCAAGCAAAGTCCGACTGTATTACATGCTTACACCCAGGGATGGAGGGTGTCTGCCAAGAGGCTCCGGTCAGAAAATGGAAGTGATGCCGACATGTGGATAAGAACAAGTGTGCACACTGTCAACATGTCAATCACTTCAGCGGTGGTGGCCGATCCCATTATCAAGGCAAAAATCCACGCCAAGAGGTTAAAACCTTTGCTAGGAGAGAAGACCCCATTAAGACCACAGCAACACCCCTGAGCCCACTTAAGCCCCACGGATGGACACTGCTCCGGTGGTTCGCATCTCCCTATCAAAGAAGAGATTAGACAGATACTGTGGCTCTGTGCAGCCTGGTTAATAACCCCTGTATGGCCAGCAACATTATGATGGCAAGAAACACAAAAGAATGCGGCAAGAGTTGCTTTGTAGAACAACTGGGGACAACCCCTGGATATGGGGAACTGAGAGGTCTGAGGCGCAATTACAGATGTCCATCTGCAGTGTCTCCCTAACTCAATAAACAGTATCATGCCATCTGAAAGGATCTAACACCAGACCAACCTGAAGAATAAG

ACGCGTACGCGGCCGCTCGAGCAGAACTCATCTCAGAAGAGGATCTGGCAGCAATGATATCCTGGATTACAAGGATGACGACGATAAGGTTTAA

Protein Sequence: >RC218769 representing NM_024645
 Red=Cloning site Green=Tags(s)

MKSSDIDQDLFTDSYCKVCSAQLISESQRVAHYESRKHASKVRLYYMLHPRDGGCPAKRLRENGSDADMVDKNKCCITLGNMSFTSAVVADSHYQKIHAKRLKLLLGEKTPKTTATPLSPLKPPRMDTAPVVASPYQRDSDRYCGLCAAWFNNPLMAQQHYDGGKHKHKNARVALLEQLGTTLDMGELRGLRRNYRCAICSVLSNIEQYHAHLKGSKHQTNLKNK

TRTRPLEQKLISEEDLAANDILDYKDDDDKV



Chromatograms: https://cdn.origene.com/chromatograms/mk6036_a05.zip

Restriction Sites: SgfI-MluI

Cloning Scheme:



ACCN: NM_024645

ORF Size: 687 bp

OTI Disclaimer: The molecular sequence of this clone aligns with the gene accession number as a point of reference only. However, individual transcript sequences of the same gene can differ through naturally occurring variations (e.g. polymorphisms), each with its own valid existence. This clone is substantially in agreement with the reference, but a complete review of all prevailing variants is recommended prior to use. [More info](#)

OTI Annotation: This clone was engineered to express the complete ORF with an expression tag. Expression varies depending on the nature of the gene.

Components: The ORF clone is ion-exchange column purified and shipped in a 2D barcoded Matrix tube containing 10ug of transfection-ready, dried plasmid DNA (reconstitute with 100 ul of water).

Reconstitution Method:

1. Centrifuge at 5,000xg for 5min.
2. Carefully open the tube and add 100ul of sterile water to dissolve the DNA.
3. Close the tube and incubate for 10 minutes at room temperature.
4. Briefly vortex the tube and then do a quick spin (less than 5000xg) to concentrate the liquid at the bottom.
5. Store the suspended plasmid at -20°C. The DNA is stable for at least one year from date of shipping when stored at -20°C.

RefSeq: [NM_024645.3](#)

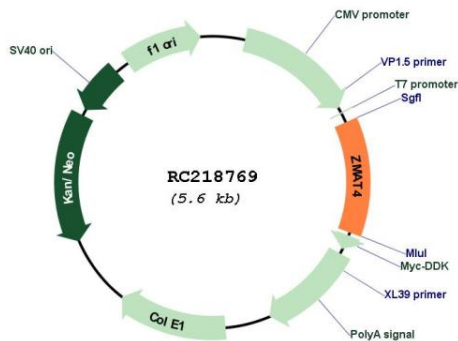
RefSeq Size: 2466 bp

RefSeq ORF: 690 bp

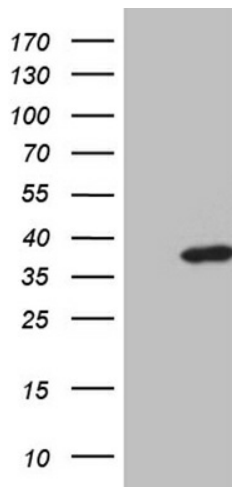
Locus ID: 79698

UniProt ID: [Q9H898](#)
 Cytogenetics: 8p11.21
 Domains: ZnF_U1, zf-C2H2
 MW: 25.7 kDa

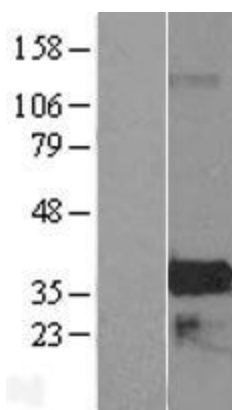
Product images:



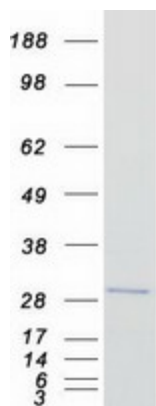
Circular map for RC218769



HEK293T cells were transfected with the pCMV6-ENTRY control (Cat# [PS100001], Left lane) or pCMV6-ENTRY ZMAT4 (Cat# RC218769, Right lane) cDNA for 48 hrs and lysed. Equivalent amounts of cell lysates (5 ug per lane) were separated by SDS-PAGE and immunoblotted with anti-ZMAT4 (Cat# [TA809685])(1:2000). Positive lysates [LY403013] (100ug) and [LC403013] (20ug) can be purchased separately from OriGene.



Western blot validation of overexpression lysate (Cat# [LY403013]) using anti-DDK antibody (Cat# [TA50011-100]). Left: Cell lysates from untransfected HEK293T cells; Right: Cell lysates from HEK293T cells transfected with RC218769 using transfection reagent MegaTran 2.0 (Cat# [TT210002]).



Coomassie blue staining of purified ZMAT4 protein (Cat# [TP318769]). The protein was produced from HEK293T cells transfected with ZMAT4 cDNA clone (Cat# RC218769) using MegaTran 2.0 (Cat# [TT210002]).