

## Product datasheet for **RC218767**

### **IRX1 (NM\_024337) Human Tagged ORF Clone**

#### **Product data:**

Product Type:	Expression Plasmids
Product Name:	IRX1 (NM_024337) Human Tagged ORF Clone
Tag:	Myc-DDK
Symbol:	IRX1
Synonyms:	IRX-5; IRXA1
Mammalian Cell Selection:	Neomycin
Vector:	pCMV6-Entry (PS100001)
E. coli Selection:	Kanamycin (25 ug/mL)



[View online »](#)

**ORF Nucleotide Sequence:**

>RC218767 representing NM\_024337  
 Red=Cloning site Blue=ORF Green=Tags(s)

TTTTGTAATACGACTCACTATAGGGCGGCCGGAATTCGTCGACTGGATCCGGTACCGAGGAGATCTGCC  
 GCC**GCGATCGCC**

ATGTCCTTCCCGCAGCTGGGCTACCCGAGTACCTGAGCGCCGCGGGCCGGGCGCTACGCGCGGAGC  
 GCCCGGGGGTGTGGCCGCGGCCGCTGCGGCGGCTGCGCGCCCTCGTCGGGCCGACCGGGGCCGCGGA  
 GCTGGGGCGGGGAGGCGCGGCTGCAGTCACCTCGGTGCTGGGCATGTACGCGCGCGGGGGCGGTAC  
 GCGGGCGCGCCAACTACAGCGCCTTCTGCCCTACGCCGCGGATCTCAGCCTTCTCTCGCAGATGGGCT  
 CGCAGTATGAACTGAAGGACAACCTGGGGTGACCCCGCCACCTTCGCAGCCACACGCGCGCGGCTTA  
 TTACCCCTACGGCCAGTCCAATACGGGGACCCCGGGCGGCCAAGAACGCCACCCGCGAGAGCACCAGC  
 ACGCTCAAGGCCGCTCAACGAGCACCGAAGAATCCCTACCCACCAAGGGCGAGAAGATCATGCTGG  
 CCATCATACCAAGATGACCCTCAGCAGGTCTCCACCTGGTTCGCCAACGCGCGCGCGGCTCAAGAA  
 GGAGAACAAGGTGACATGGGAGCGCGCAGCAAGGACCAGGAAGATGGAGCGCTTTCGGCAGCGACACC  
 GAGGGCGACCCGAGAAGGCCGAGGACGACGAGGAGATCGACCTGGAAAGCATCGACATTGACAAGATCG  
 ACGAGCACGATGGCGACCAGAGCAACGAGGATGACGAGGACAAGGCCGAGGCTCCGCACGCGCCCGCAGC  
 CCCTTCTGCTCTTGCCCGGGACCAAGGCTCGCCGCTGGCAGCAGCCGACGTTCTCAAGCCCCAGGACTCG  
 CCCTTGGGCTGGCAAAGGAGGCCCCAGAGCCGGGCAGCAGCGCCTGCTGAGCCCCGGCGCTGCAGCGG  
 GCGGCCTGCAGGGTGCGCCGACGGCAAGCCAAAGATCTGGTTCGTCGGCGGAGACAGCCACGAGCCCCGA  
 CGGTGCGCCAAGGCTTCGCCACCACCCCGGGCCACCCCGCGCGCACGGGCCCTCCGCGGGGGCG  
 CCGTGAACACCCCGCCTTCTGCCTAGCCAGGACTGTACACCTGCCACATCGGCAAGTCTCCAAT  
 GGACCAACAGCGCATTCTCGCACAGGGCTCCCTGCTCAACATGCGCTCCTTCTGGGCGTTGGCGCTCC  
 CCACGCCGCGCCCATGGCCCTCACCTTCTGCACCTCCACCACCGCAGCCGCGGTCGCTATTGCCCCG  
 GGGCACTCAATGGAGACAAGGCCCTCGTCCGAGCAGCCACGCTCCAGAGAGAGACCTCGTCCCCA  
 GGCCAGATTGCGCGGCACAGCAGTTAAAGTCGCCCTTCCAGCCGGTACGCGACAACCTCTCTGCCCCGCA  
 GGAGGGAACGCCGCGGATCTTAGCAGCCCTCCCGTCCGCC

**ACGCGT**ACGCGGGCCGCTCGAGCAGAAACTCATCTCAGAAGAGGATCTGGCAGCAAATGATATCTGGATT  
 ACAAGGATGACGACGATAAGGTTTAA

**Protein Sequence:**

>RC218767 representing NM\_024337  
 Red=Cloning site Green=Tags(s)

MSFPQLGYPQYL SAAGPGAYGGERPGVLA AAAAAAAAAA SGRPGAELGGGAGAAVTVLGMVAAAGPY  
 AGAPNYS AFLPYAADLSLFSQMGSQYELKDNPGVHPATFAAHTAPAYYPYGFQYGDPPGRPKNATRESTS  
 TLKAWLNEHRKNPYPTKGEKIMLAIITKMTLTQVSTWFANARRRLKKNKVTWGARSKDQEDGALFGSDT  
 EGDPEKAEDDEEIDLESIDIDKIDEHDGDSNEDDEKAEAPHAPAAPSALARDQGSPLA AADVLPQDS  
 PLGLAKEAPEPGSTRLLSPGAAAGGLQGAPHGPKIWSLAETATSPDGAPKASPPPPAGHPGAGHGPSAGA  
 PLQHPAFLPSHGLYTCHIGKFSNWTNSAFLAQGSLLNMRSFLGVGAPHAAPHGPHLPAPPPPQPPVAIAP  
 GALNGDKASVRSSPTLPERDLVPRPDSPAQQLKSPFQPVDRNSLAPQEGTPRILAALPSA

**TR**TRPLEQKLI SEEDLAANDILDYKDDDDKV

**Chromatograms:**

[https://cdn.origene.com/chromatograms/mk8021\\_b02.zip](https://cdn.origene.com/chromatograms/mk8021_b02.zip)

**Restriction Sites:**

Sgfl-MluI

**Cloning Scheme:**


**ACCN:** NM\_024337

**ORF Size:** 1440 bp

**OTI Disclaimer:** Due to the inherent nature of this plasmid, standard methods to replicate additional amounts of DNA in E. coli are highly likely to result in mutations and/or rearrangements. Therefore, OriGene does not guarantee the capability to replicate this plasmid DNA. Additional amounts of DNA can be purchased from OriGene with batch-specific, full-sequence verification at a reduced cost. Please contact our customer care team at [custsupport@origene.com](mailto:custsupport@origene.com) or by calling 301.340.3188 option 3 for pricing and delivery.

The molecular sequence of this clone aligns with the gene accession number as a point of reference only. However, individual transcript sequences of the same gene can differ through naturally occurring variations (e.g. polymorphisms), each with its own valid existence. This clone is substantially in agreement with the reference, but a complete review of all prevailing variants is recommended prior to use. [More info](#)

**OTI Annotation:** This clone was engineered to express the complete ORF with an expression tag. Expression varies depending on the nature of the gene.

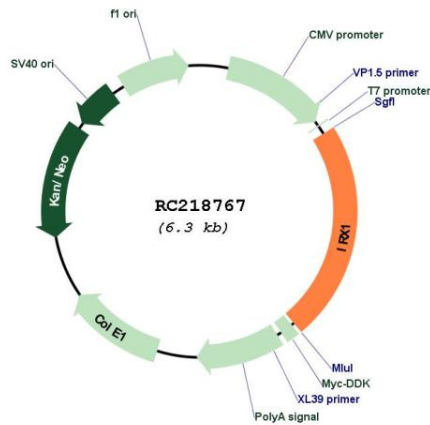
**Components:** The ORF clone is ion-exchange column purified and shipped in a 2D barcoded Matrix tube containing 10ug of transfection-ready, dried plasmid DNA (reconstitute with 100 ul of water).

- Reconstitution Method:**
1. Centrifuge at 5,000xg for 5min.
  2. Carefully open the tube and add 100ul of sterile water to dissolve the DNA.
  3. Close the tube and incubate for 10 minutes at room temperature.
  4. Briefly vortex the tube and then do a quick spin (less than 5000xg) to concentrate the liquid at the bottom.
  5. Store the suspended plasmid at -20°C. The DNA is stable for at least one year from date of shipping when stored at -20°C.

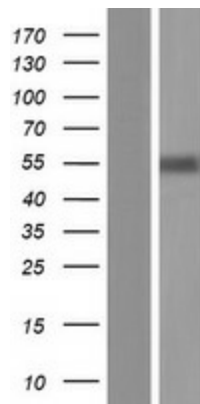
**RefSeq:** [NM\\_024337.4](#)  
**RefSeq Size:** 1858 bp  
**RefSeq ORF:** 1443 bp  
**Locus ID:** 79192  
**UniProt ID:** [P78414](#)  
**Cytogenetics:** 5p15.33  
**MW:** 49.4 kDa

**Gene Summary:** This gene encodes a member of the Iroquois homeobox protein family. Homeobox genes in this family are involved in pattern formation in the embryo. The gene product has been identified as a tumor suppressor in gastric (PMID: 21602894, 20440264) and head and neck cancers (PMID: 18559491). A pseudogene of this gene is located on chromosome 13. [provided by RefSeq, Dec 2011]

### Product images:



Circular map for RC218767



Western blot validation of overexpression lysate (Cat# [LY411296]) using anti-DDK antibody (Cat# [TA50011-100]). Left: Cell lysates from untransfected HEK293T cells; Right: Cell lysates from HEK293T cells transfected with RC218767 using transfection reagent MegaTran 2.0 (Cat# [TT210002]).