

Product datasheet for **RC218765**

FOXRED2 (NM_001102371) Human Tagged ORF Clone

Product data:

Product Type:	Expression Plasmids
Product Name:	FOXRED2 (NM_001102371) Human Tagged ORF Clone
Tag:	Myc-DDK
Symbol:	FOXRED2
Synonyms:	ERFAD
Mammalian Cell Selection:	Neomycin
Vector:	pCMV6-Entry (PS100001)
E. coli Selection:	Kanamycin (25 ug/mL)



[View online »](#)

**ORF Nucleotide
Sequence:**

>RC218765 representing NM_001102371
 Red=Cloning site Blue=ORF Green=Tags(s)

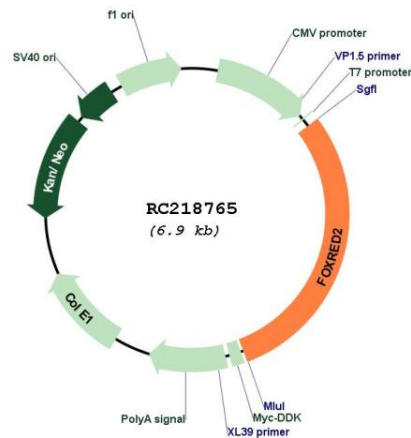
TTTTGTAATACGACTCACTATAGGGCGGCCGGGAATTCGTCGACTGGATCCGGTACCGAGGAGATCTGCC
 GCC**CGGATCGCC**

ATGGGCCTCTCCGCTGCGGCCCGTTGTGGGGTCCCCGGGGCTGCTCCTGGCCATCGCCCTGCACCCAG
 CGCTGTGGTGCCTCCCGCGCCGGGACTACTGCGTGTGGGCGCTGGGCCCGGGCTGCAGATGGCCTA
 TTCCTGCAGCGCGCTGGACGCGACTACGAGTGTTCGAGCGGGCCCCGGGCCCGGAGCTTCTCACA
 CGCTACCCGCGGCACCGCAAGCTCATCAGCATCAACAAGCGGTACACGGGCAAGGCTAACGCCGAGTTCA
 ACCTCCGCCACGACTGGAAGTCTCTGCTCAGCCACGACCCCGGCTGCTTTCAGACACTACTCGCGTGC
 CTACTTCCCCGACGCCCGGACATGGTGCCTACCTGGGTGACTTCGCGGACACGCTGGGGCTCCGTGTC
 CAGTACAACACCACCATCGCCACGTACTCTGGACAAGGACCGACAGGCCTGGAATGGCCACTACTTCA
 TCCTAACTGACCAGAAGGGCCAGGTGCATCAGTGCAGCGTCTCTTTGTAGCCACTGGTTTATCAGTCCC
 CAACCAGGTTGACTTCCCTGGCTCCGAATATGCAGAGGGTTACGAGTCCGTGTCGGTGGACCTGAGGAC
 TTTGTAGGCCAGAATGTGCTGATCCTGGGTCTGGGAATCGGCCCTTGAGACAGCAGAGAATCTTGG
 GTGTCACAAACTTTATCCATATGCTCAGCCGCTCCCGGGTCCGTCTGTCCTGGGCCACCCACTACGTTGG
 AGACCTCAGAGCCATCAACAATGGCCTGCTGGATACCTACCAGCTCAAGTCCCTGGACGGGCTGCTCGAG
 TCTGACCTGACGGATCTGGCCATCTGAAGGACAGCAAAGGCAAGTTCCATGTCACCCCGAAATCTTCC
 TGGAAGAAGCCAAACCAACAGAGTCCCGACTCCATCACCTCCCCAGGACGACAATGACAACCTTTGC
 CATGCGCGTGCCTATGACCGGGTAATCCGCTGCCTGGGCTGGAAGTCTGACTTCTCCATTTTCAATAAG
 AAGGAAGCCGGGTCTGTTTATCCTGGTACTGCCAGCCACTCGGTGGACTACCGAAATCTGCTGGGGC
 CTTTCATCCACGGATTCCGATACACAGTGCCTGCTTTCACCGGCTCCTGGAGCACCGCCACCACAGCGTC
 ACCTGGCCCGCCACTGAGCTCCCATCACACAGCTGACCAGCTCCATCGTGCGGCGCTGAATGAGGCTT
 CTGGGCTCTACCAGATGTTCCGTGTGCTGGCCGATGTCATCCTGTTGAAGGAGAATTCACGGCCTTTGA
 GTACCTGGAGGAGTTCCCATACAGATGCTGGCCAGCTGGAGACTCACAGGGAGGAAGGCAAAGCAC
 GGGCTCTCGTCATCAACATGGAATATGGCAGAAATTTCTGCCCCGACAAGGACGTCTTCTTTGATG
 ACCGGTCTGTGGGCACACAGAAGATGCCTGGCAGTCTAACTTTCTTCATCCTGTCATCTACTACTATAG
 ATACCTCCCCACCGAACAGGAGGTGAGGTTCCGCCCTGCACACTGGCCCCTGCCTCGGCCACGGCCATC
 CATCACATCGTGAAGACTTCTTAACAGACTGGACTGCCCGATCGGGCACATCTACCTCTGAGGCGCT
 TCCTGGAGAACTGTTGGACACCGATTTGCGAAGCTTCTATGCAGAGCTCTGCTTCTGTCGCCCTCAC
 GCGCCAGAAGTTGCCACCTTTTCCAGCAGGGGTACCTGAGGATGCAGGGACTCGTGAGTACCGAGAGC
 CTTTGGCAGCACAGAGTGGAGAGCAGGCTCCTGCGGGACTATGCCCCACAGGCAGGCGCCTGGAGGACA
 GCAGCCAGCAGCTTGGGACCAAGAGCCACTAGGTTCCCCCTGGCTCCAGGGCTCTGGCTCAGTCCGT
 CGATAGCAACAAAGAGGAGCTC

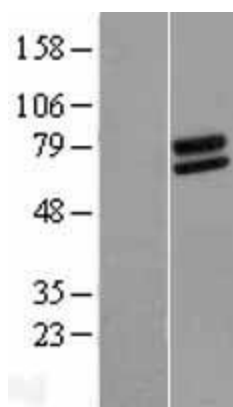
ACGCGTACGCGGCCGCTCGAGCAGAACTCATCTCAGAAGAGGATCTGGCAGCAATGATATCCTGGATT
 ACAAGGATGACGACGATAAGGTTTAA

Components:	The ORF clone is ion-exchange column purified and shipped in a 2D barcoded Matrix tube containing 10ug of transfection-ready, dried plasmid DNA (reconstitute with 100 ul of water).
Reconstitution Method:	<ol style="list-style-type: none">1. Centrifuge at 5,000xg for 5min.2. Carefully open the tube and add 100ul of sterile water to dissolve the DNA.3. Close the tube and incubate for 10 minutes at room temperature.4. Briefly vortex the tube and then do a quick spin (less than 5000xg) to concentrate the liquid at the bottom.5. Store the suspended plasmid at -20°C. The DNA is stable for at least one year from date of shipping when stored at -20°C.
RefSeq:	NM_001102371.2
RefSeq Size:	4980 bp
RefSeq ORF:	2055 bp
Locus ID:	80020
UniProt ID:	Q8IWF2
Cytogenetics:	22q12.3
Protein Families:	Druggable Genome
MW:	77.6 kDa
Gene Summary:	Probable flavoprotein which may function in endoplasmic reticulum associated degradation (ERAD). May bind non-native proteins in the endoplasmic reticulum and target them to the ubiquitination machinery for subsequent degradation.[UniProtKB/Swiss-Prot Function]

Product images:



Circular map for RC218765



Western blot validation of overexpression lysate (Cat# [LY420137]) using anti-DDK antibody (Cat# [TA50011-100]). Left: Cell lysates from untransfected HEK293T cells; Right: Cell lysates from HEK293T cells transfected with RC218765 using transfection reagent MegaTran 2.0 (Cat# [TT210002]).