

## Product datasheet for **RC218763**

### TFIIE alpha (GTF2E1) (NM\_005513) Human Tagged ORF Clone

#### Product data:

|                           |   |
|---------------------------|---|
| Product Type:             | Expression Plasmids                                     |
| Product Name:             | TFIIE alpha (GTF2E1) (NM_005513) Human Tagged ORF Clone |
| Tag:                      | Myc-DDK   |
| Symbol:                   | TFIIE alpha   |
| Synonyms:                 | FE; TF2E1; TFIIE-A                                      |
| Mammalian Cell Selection: | Neomycin  |
| Vector:                   | pCMV6-Entry (PS100001)                                  |
| E. coli Selection:        | Kanamycin (25 ug/mL)                                    |



[View online »](#)

**ORF Nucleotide Sequence:**

>RC218763 representing NM\_005513  
 Red=Cloning site Blue=ORF Green=Tags(s)

TTTTGTAATACGACTCACTATAGGGCGGCCGGAATTCGTCGACTGGATCCGGTACCGAGGAGATCTGCC  
 GCC**GCGATCGCC**

ATGGCAGACCCAGATGTCCTCACTGAAGTTCAGCAGCATTGAAGCGTTAGCCAAGTATGTGATCCGGG  
 GATTTTATGGCATTGAGCATGCCTTGGCCTTGGACATCTTGATCAGGAACCTCTGTGTGAAAAGAGGAGGA  
 TATGCTGGAGCTGCTCAAGTTTGTATCGGAAGCAACTTCGATCAGTTTTGAATAATTTAAAGGAGACAAG  
 TTTATCAAATGCAGAATGAGGGTAGAGACTGCTGCAGACGGGAAAACCACTCGCCATAACTACTTCA  
 TCAATTATCGTACTCTTGTAAATGTGGTAAAATAAACTGGACCACATGAGAAGAAGATTGAGACCGA  
 TGAGAGAGATTGACCAACCGGGCTTCTTCAAATGTCCTGTCTGTAGTAGTACTTTACAGACTTAGAA  
 GCTAATCAGCTCTTTGATCCTATGACAGGAACCTCCGCTGTACTTTTTGCCATACAGAGGTAGAAGAGG  
 ATGAATCAGCAATGCCAAAAAAGATGCACGCACACTTTTGGCAAGGTTAATGAACAAATTGAGCCCAT  
 TTATGCATTGCTTCGGGAGACAGAGGATGTGAACCTGGCCTATGAAATACTTGAGCCAGAACCCACAGAA  
 ATCCCAGCCCTGAAACAGAGCAAGGACCATGCAGCAACTACTGCTGGAGCTGCTAGCCTAGCAGGTGGGC  
 ACCACCGGAAGCATGGGCCACCAAAGTCTTCTATGAAGACTTATACACTCAGAATGTTGTCATTAA  
 CATGGATGACCAAGAAGATCTTCATCGAGCCTCACTGGAAGGAAATCTGCCAAAGAGAGGCCTATTTGG  
 TTGAGAGAAAGCACTGTCCAAGGGGCATATGGTTCTGAAGATATGAAAGAAGGGGCATAGATATGGACG  
 CATTTCAGGAGCGTGAGGAAGGCCATGCTGGGCCTGATGACAACGAAGAGGTGATGCGAGCACTGCTCAT  
 TCACGAGAAAAAGACTTCTCTGCCATGGCTGGTTCAGTGGGGCAGCTGCTCCAGTGACCGCTGCCAAT  
 GGCGATGACTCAGAAAGCGAGACCAGTGAGTCAGATGATGATTCTCCACCCGTCGGCAGCTGTGGCTG  
 TGCATAAACGAGAAGAGGATGAAGAGGAAGATGACGAGTTTGAAGAAGTAGCAGATGACCCCATTTGCAT  
 GGTGGCTGGCCGTCGGTTCTCTACAGTGAAGTGAACCAACGGCCAGAGCTAGTGCCCGAGATGACACCA  
 GAAGAAAAGGAAGCATATATAGCAATGGGACAACGCATGTTTGAGGACCTCTTTGAG

**ACGCGT**ACGCGGCCGCTCGAGCAGAACTCATCTCAGAAGAGGATCTGGCAGCAATGATATCCTGGATT  
 ACAAGGATGACGACGATAAGGTTTAA

**Protein Sequence:**

>RC218763 representing NM\_005513  
 Red=Cloning site Green=Tags(s)

MADPDVLTEVPAALKRLAKYVIRGFYGIHALALDILIRNSCVKEEDMLELLKFDRKQLRSVLNNLKGDK  
 FIKCRMVETAADGKTRHNYFINYRTLNVVVKYKLDHMRRIETDERDSTNRASFKCPVCSSTFDLE  
 ANQLFDPMTGFRCTFCHTEVEEDESAMPKKDARTLLARFNEQIEPIYALLRETEDVNLAYEILEPEPTE  
 IPALKQSKDHAATTAGAASLAGGHHREAWATKGPSYEDLYTQNVVINMDDQEDLHRASLEGKSAKERPIW  
 LRESTVQGAYGSEDMKEGGIDMAFQEREEGHAGPDDNEEVMRALLIHEKKTSSAMAGSVGAAAPVTAAN  
 GDDSESETSESDSPPRPAAVAVHKREEDEEDEFEEVADDPIMVAGRPFYSYSEVSQRPELVAQMTP  
 EEKEAYIAMGQRMFDLFE

**TR**TRPLEQKLISEEDLAANDILDYKDDDDKV

**Chromatograms:**

[https://cdn.origene.com/chromatograms/mk6475\\_b10.zip](https://cdn.origene.com/chromatograms/mk6475_b10.zip)

**Restriction Sites:**

Sgfl-Mlul

**Cloning Scheme:**


**ACCN:** NM\_005513

**ORF Size:** 1317 bp

**OTI Disclaimer:** The molecular sequence of this clone aligns with the gene accession number as a point of reference only. However, individual transcript sequences of the same gene can differ through naturally occurring variations (e.g. polymorphisms), each with its own valid existence. This clone is substantially in agreement with the reference, but a complete review of all prevailing variants is recommended prior to use. [More info](#)

**OTI Annotation:** This clone was engineered to express the complete ORF with an expression tag. Expression varies depending on the nature of the gene.

**Components:** The ORF clone is ion-exchange column purified and shipped in a 2D barcoded Matrix tube containing 10ug of transfection-ready, dried plasmid DNA (reconstitute with 100 ul of water).

**Reconstitution Method:**

1. Centrifuge at 5,000xg for 5min.
2. Carefully open the tube and add 100ul of sterile water to dissolve the DNA.
3. Close the tube and incubate for 10 minutes at room temperature.
4. Briefly vortex the tube and then do a quick spin (less than 5000xg) to concentrate the liquid at the bottom.
5. Store the suspended plasmid at -20°C. The DNA is stable for at least one year from date of shipping when stored at -20°C.

**RefSeq:** [NM\\_005513.1](#), [NP\\_005504.1](#)

**RefSeq Size:** 2969 bp

**RefSeq ORF:** 1320 bp

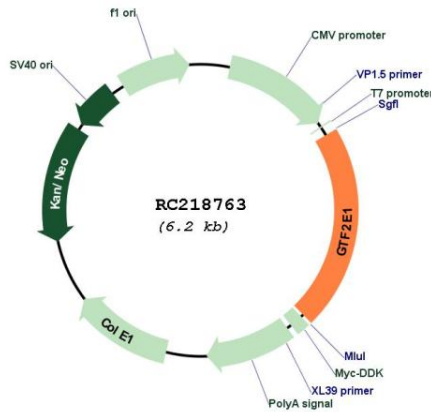
**Locus ID:** 2960

**UniProt ID:** [P29083](#)

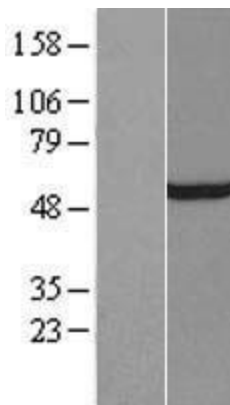
**Cytogenetics:** 3q13.33

**Domains:** TFIIE  
**Protein Families:** Transcription Factors  
**Protein Pathways:** Basal transcription factors  
**MW:** 49.3 kDa  
**Gene Summary:** Recruits TFIIH to the initiation complex and stimulates the RNA polymerase II C-terminal domain kinase and DNA-dependent ATPase activities of TFIIH. Both TFIIH and TFIIE are required for promoter clearance by RNA polymerase.[UniProtKB/Swiss-Prot Function]

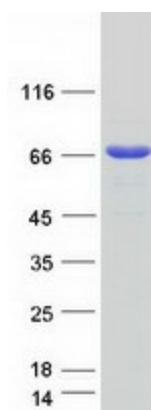
**Product images:**



Circular map for RC218763



Western blot validation of overexpression lysate (Cat# [LY417254]) using anti-DDK antibody (Cat# [TA50011-100]). Left: Cell lysates from untransfected HEK293T cells; Right: Cell lysates from HEK293T cells transfected with RC218763 using transfection reagent MegaTran 2.0 (Cat# [TT210002]).



Coomassie blue staining of purified GTF2E1 protein (Cat# [TP318763]). The protein was produced from HEK293T cells transfected with GTF2E1 cDNA clone (Cat# RC218763) using MegaTran 2.0 (Cat# [TT210002]).